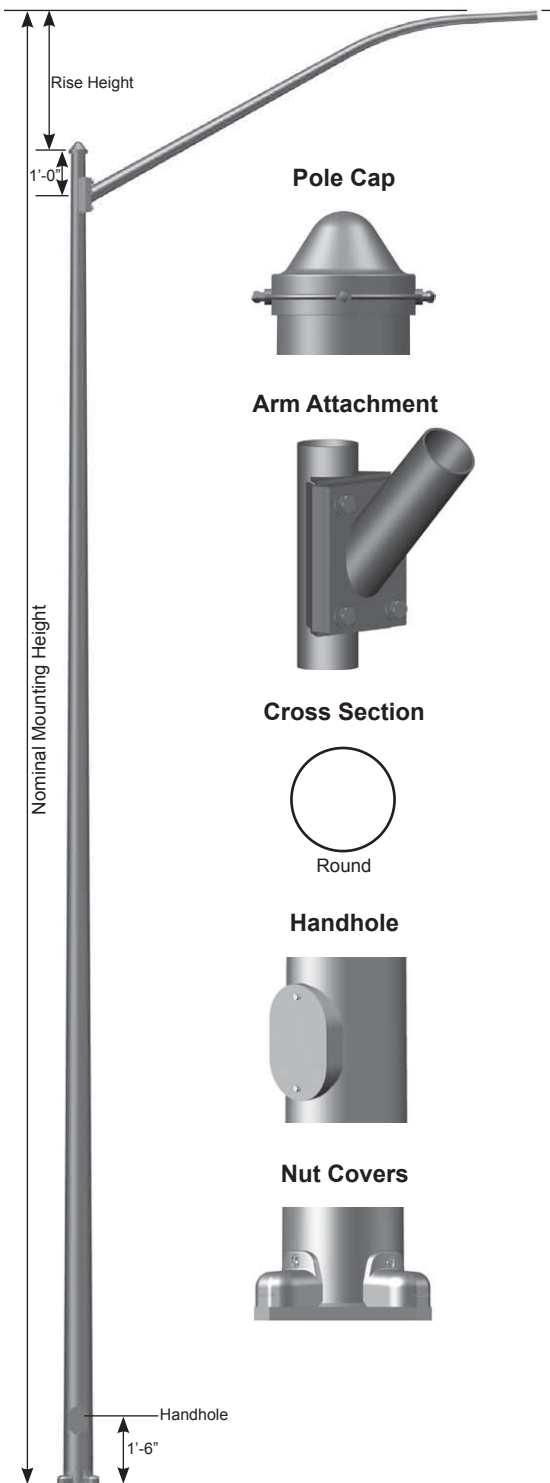


Job Name: _____	Client Name: _____
Job Location - City: _____ State: _____	Created By: _____ Date: _____
Product: _____ Quote: _____	Customer Approval: _____ Date: _____

SPECIFICATIONS



Pole - The pole shaft conforms to ASTM A595 Grade A with a constant linear taper of 0.14 in/ft.

Pole Top - A removable pole cap with hardware is provided.

Luminaire Arm - Luminaire arm shaft conforms to ASTM A595 Grade A with a constant linear taper of 0.14 in/ft.. Double luminaire arms are oriented 180° apart. For other orientations please consult factory.

Luminaire Arm Attachment - The luminaire arm and pole connection plates conform to ASTM A36.

Handhole - A covered handhole and grounding provision with hardware is provided.

Nut Covers - Anchor bolt nut covers with hardware are provided.

Full Base Cover - Optional two-piece full base cover is fabricated from ABS plastic. Valmont reserves the right to provide an optional two-piece steel full base cover on some applications depending upon the finish requirement and/or pole base diameter.

Anchor Base - The anchor base (base plate) conforms to ASTM A36.

Anchor Bolts - Anchor bolts conform to ASTM F1554 Grade 55 and are provided with two hex nuts and two flat washers. Bolts have an "L" bend on one end and are galvanized a minimum of 12" on the threaded end.

Hardware - All structural fasteners are galvanized high strength carbon steel. All non-structural fasteners are galvanized or zinc-plated carbon steel or stainless steel.

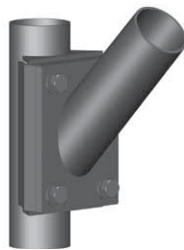
Finish - Standard finishes are galvanized, prime painted or any of Valmont's V-PRO™ Protection Systems. Additional finish options available upon request.

Design Criteria - Please reference Design Criteria Specification for appropriate design conditions.

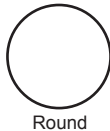
Pole Cap



Arm Attachment



Cross Section



Round

Handhole



Nut Covers



ARM DATA

ARM SPAN (FT)	RISE HEIGHT	BASE OD (IN)	END OD (IN)	WALL THK (IN)
10	3'-0"	3.95	2.40	11
12	4'-0"	4.27	2.40	11
15	5'-0"	4.72	2.40	11
20	7'-0"	5.49	2.40	11
25	8'-0"	6.21	2.40	11
30	9'-0"	6.93	2.40	11

Double Arm Arrangement



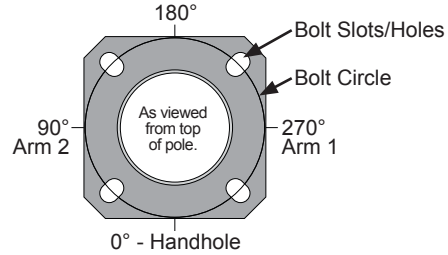
ROUND TAPERED STEEL Smooth DS56 / 30'-35' Mounting Heights

Job Name: _____	Client Name: _____
Job Location - City: _____ State: _____	Created By: _____ Date: _____
Product: _____ Quote: _____	Customer Approval: _____ Date: _____

ANCHORAGE DATA

POLE BASE OD (IN)	WALL THK (GA)	BASE PLATE				ANCHOR BOLTS		
		BOLT CIRCLE		SQUARE (IN)	THK (IN)	DIA x LENGTH x HOOK (IN)	PROJECTION (IN)	± (IN)
DIA (IN)	± (IN)							
7.50	11	10.50	0.50	11.25	0.875	1.00 x 36.00 x 4.00	4.13	0.25
8.00	11	11.00	0.50	11.50	0.875	1.00 x 36.00 x 4.00	4.13	0.25
8.50	11	11.50	0.50	12.00	1.000	1.00 x 36.00 x 4.00	4.25	0.25
9.00	11	12.50	0.50	12.38	1.000	1.00 x 36.00 x 4.00	4.25	0.25
9.50	11	13.00	0.50	13.00	1.000	1.00 x 36.00 x 4.00	4.25	0.25
10.00	11	13.50	0.50	14.00	1.000	1.00 x 36.00 x 4.00	4.25	0.25

Anchor Base Detail



LOAD AND DIMENSIONAL DATA

NOMINAL MOUNTING HEIGHT	QUANTITY OF ARMS	MAX ARM LENGTH (FT)	100 MPH w/1.3 GUST		POLE DIMENSIONS				MODEL NUMBER
			MAX LUMINAIRE EPA ¹ (SQFT)	MAX LUMINAIRE WEIGHT ¹ (LBS)	BASE OD (IN)	TOP OD (IN)	WALL THK (GA)	STRUCTURE WEIGHT ² (LBS)	
30'-0"	Single	10	2.0	75	7.50	3.72	11	290	R750A270
	Single	12	2.0	75	7.50	3.86	11	300	R750A260
	Single	15	2.0	75	8.00	4.50	11	340	R800A250
	Single	20	2.0	75	8.50	5.28	11	390	R850A230
	Single	25	2.0	75	9.00	5.92	11	435	R900A220
	Single	30	2.0	75	9.50	6.56	11	495	R950A210
	Double	10	2.0	75	7.50	3.72	11	345	R750A270
	Double	12	2.0	75	7.50	3.86	11	365	R750A260
	Double	15	2.0	75	8.00	4.50	11	440	R800A250
	Double	20	2.0	75	8.50	5.28	11	525	R850A230
35'-0"	Single	10	2.0	75	8.50	4.02	11	360	R850A320
	Single	12	2.0	75	8.50	4.16	11	370	R850A310
	Single	15	2.0	75	8.50	4.30	11	390	R850A300
	Single	20	2.0	75	9.00	5.08	11	440	R900A280
	Single	25	2.0	75	9.50	5.72	11	500	R950A270
	Single	30	2.0	75	10.00	6.36	11	555	RT00A260
	Double	10	2.0	75	8.50	4.02	11	415	R850A320
	Double	12	2.0	75	8.50	4.16	11	440	R850A310
	Double	15	2.0	75	8.50	4.30	11	490	R850A300
	Double	20	2.0	75	9.00	5.08	11	580	R900A280

DS56 40'-45'
mounting heights
available at
valmontstructures.com

- EPA represents the Effective Projected Area of each luminaire. Designs are limited to one luminaire per arm. Variations from sizes above are available upon inquiry at the factory. Satisfactory performance of poles is dependent upon the pole being properly attached to a supporting foundation of adequate design.
- Structure Weight is a nominal value which includes the pole shaft, base plate and luminaire arm(s) only.

PRODUCT ORDERING CODES

DESIGN SERIES	MODEL NUMBER	FIXTURE MOUNTING	FINISH	COLOR	V-PRO™ PROTECTION SYSTEM	OPTIONS
DS56	R750A270 R750A260 R800A250 R850A230 R900A220 R950A210 R850A320 R850A310 R850A300 R900A280 R950A270	10S = 10' Single 10D = 10' Double 12S = 12' Single 12D = 12' Double 15S = 15' Single 15D = 15' Double 20S = 20' Single 20D = 20' Double 25S = 25' Single 30S = 30' Single	GV = Galvanize PP = Prime Paint FP = Finish Paint GF = Galvanized + Finish Paint	-- = Galvanize -- = Prime Paint WH = White ST = Sandstone BK = Black SM = Silver Metallic SL = Silver LG = Light Gray SG = Slate Gray DT = Dark Tan MB = Medium Bronze CB = Bronze DB = Dark Bronze BN = Brown HG = Hunter Green DG = Dark Green RD = Red SC = Special Color (Contact Factory)	-- = Galvanize -- = Prime Paint V1 = V-PRO 1 Basic 1 Coat Powder. V2 = V-PRO 2 2 Coat Powder or Liquid. Includes epoxy primer & top coat. V3 = V-PRO 3 2 Coat Powder or Liquid. Includes zinc primer & top coat. V4 = V-PRO 4 2 Coat Powder or Liquid. Includes zinc primer & premium top coat.	See Accessories at valmontstructures.com (Please Specify)