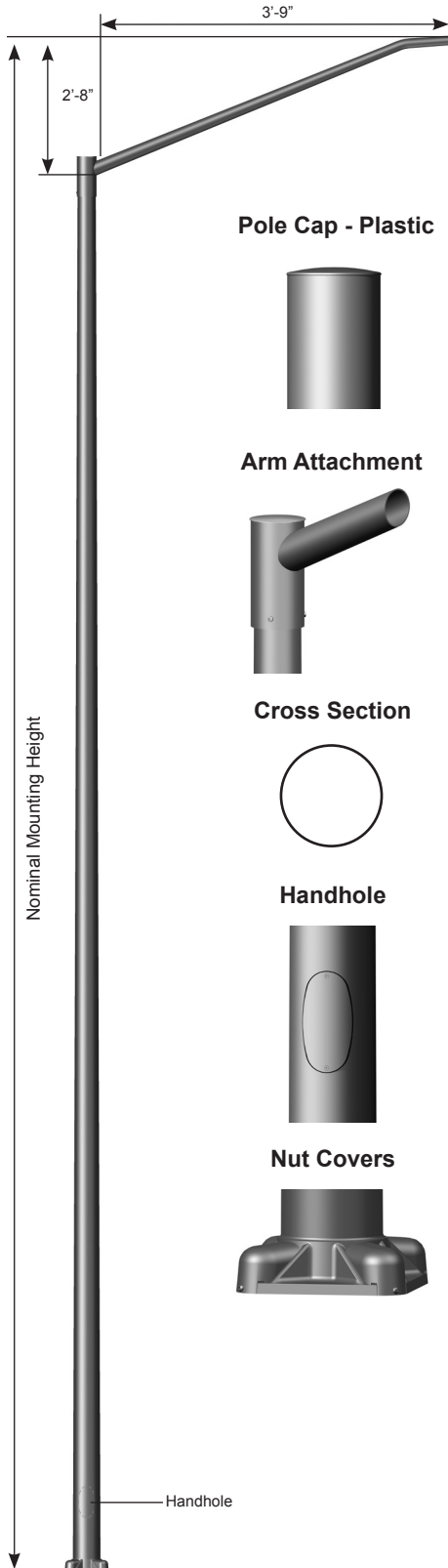


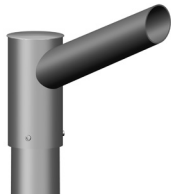
Job Name: _____	Client Name: _____
Job Location - City: _____ State: _____	Created By: _____ Date: _____
Product: _____ Quote: _____	Customer Approval: _____ Date: _____



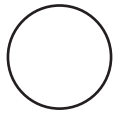
**Pole Cap - Plastic**



**Arm Attachment**



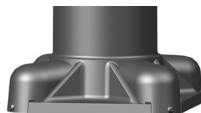
**Cross Section**



**Handhole**



**Nut Covers**



## SPECIFICATIONS

**Pole** - The pole shaft is extruded from seamless alloy aluminum.

**Pole Top** - A removable pole cap is provided.

**Luminaire Arm** - Luminaire arms are conically tapered from seamless alloy aluminum to 2.38" OD at the luminaire end. Double luminaire arms are oriented 180° apart. For other orientations please consult factory.

**Luminaire Arm Attachment** - Connection allows arm to be erected and held in place by gravity and secured by three set screws.

**Handhole** - A covered handhole with hardware and grounding provision are provided.

**Base Cover** - Optional decorative base covers available as special order.

**Anchor Base** - The anchor base is cast from 356 alloy aluminum. The completed assembly is heat-treated to a T6 temper. Aluminum nut covers are included with anchor base unless otherwise specified.

**Anchor Bolts** - Anchor bolts conform to ASTM F1554 Grade 55 and are provided with two hex nuts and two flat washers. Bolts have an "L" bend on one end and are galvanized a minimum of 12" on the threaded end.

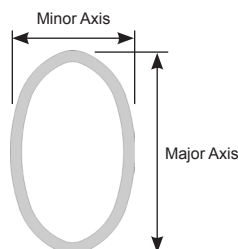
**Hardware** - All structural and non-structural fasteners are stainless steel.

**Finish** - The standard finish for the pole assembly and components is satin brushed, natural anodize, duranodic or polyester powder applied coating in accordance with Valmont's Specifications. Additional finish options available upon request.

**Design Criteria** - Please reference Design Criteria Specification for appropriate design conditions.

## ARM DATA

**Ovalized Arm Cross Section**



**Double Arm Arrangement**

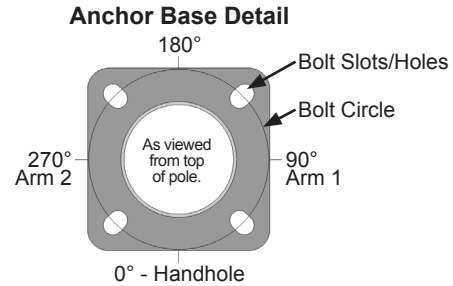


# ROUND TAPERED ALUMINUM Elliptical Mast Arm 4' Double - Hub Mount

Job Name: _____	Client Name: _____
Job Location - City: _____ State: _____	Created By: _____ Date: _____
Product: _____ Quote: _____	Customer Approval: _____ Date: _____

## ANCHORAGE DATA

POLE		BASE PLATE				ANCHOR BOLTS		
BASE OD (IN)	WALL THK (IN)	BOLT CIRCLE		SQUARE (IN)	THK (IN)	DIA x LENGTH x HOOK (IN)	PROJECTION (IN)	± (IN)
		DIA (IN)	± (IN)					
5.00	0.188	8.63	0.88	9.61	0.630	0.75 x 17.00 x 3.00	3.25	N/A
6.00	0.156	9.50	0.75	10.32	0.630	0.75 x 17.00 x 3.00	3.50	N/A
6.00	0.188	9.50	0.75	10.32	0.630	0.75 x 17.00 x 3.00	3.50	N/A
7.00	0.156	10.56	0.43	11.26	0.750	1.00 x 36.00 x 4.00	4.13	N/A
8.00	0.156	11.63	0.37	12.05	0.750	1.00 x 36.00 x 4.00	4.13	N/A
8.00	0.188	11.63	0.37	12.05	0.750	1.00 x 36.00 x 4.00	4.13	N/A
8.00	0.250	11.63	0.37	12.05	0.750	1.00 x 36.00 x 4.00	4.13	N/A
9.00	0.156	13.25	0.75	12.48	1.250	1.00 x 36.00 x 4.00	4.13	N/A
9.00	0.188	13.25	0.75	12.48	1.250	1.00 x 36.00 x 4.00	4.13	N/A
10.00	0.188	14.31	0.69	13.19	1.250	1.00 x 36.00 x 4.00	4.75	N/A



## LOAD AND DIMENSIONAL DATA

NOMINAL MOUNTING HEIGHT	MAX WEIGHT <sup>1</sup> (LBS)	DESIGN INFORMATION					POLE DIMENSIONS						MODEL NUMBER
		70 MPH w/1.3 GUST	80 MPH w/1.3 GUST	90 MPH w/1.3 GUST	100 MPH w/1.3 GUST	110 MPH w/1.3 GUST	POLE HEIGHT	BASE OD (IN)	TOP OD (IN)	WALL THK (IN)	STRUCTURE WEIGHT <sup>2</sup> (LBS)		
		MAX EPA <sup>1</sup> (SQ FT)	MAX EPA <sup>1</sup> (SQ FT)	MAX EPA <sup>1</sup> (SQ FT)	MAX EPA <sup>1</sup> (SQ FT)	MAX EPA <sup>1</sup> (SQ FT)							
20'-0"	75	4.3	2.6	1.5	0.8	N/A	17'-8"	5.00	3.00	0.188	69	2MA0432H-170830506T4	
	75	5.9	3.9	2.5	1.6	1.0	17'-8"	6.00	4.00	0.156	71	2MA0432H-170840605T4	
	75	6.0	5.2	3.6	2.5	1.7	17'-8"	6.00	4.00	0.188	81	2MA0432H-170840606T4	
25'-0"	75	3.1	1.6	0.7	N/A	N/A	22'-8"	6.00	4.00	0.156	85	2MA0432H-220840605T4	
	75	4.5	2.7	1.5	0.7	N/A	22'-8"	6.00	4.00	0.188	97	2MA0432H-220840606T4	
	75	5.8	3.7	2.3	1.4	0.8	22'-8"	7.00	4.00	0.156	93	2MA0432H-220840705T4	
30'-0"	75	6.0	6.0	4.3	3.0	2.1	22'-8"	8.00	4.50	0.156	104	2MA0432H-220845805T4	
	75	3.2	1.7	0.7	N/A	N/A	27'-8"	7.00	4.00	0.156	109	+2MA0432H-270840705T4	
	75	5.6	3.5	2.2	1.4	0.7	27'-8"	8.00	4.50	0.156	122	2MA0432H-270845805T4	
35'-0"	75	6.0	5.0	3.4	2.3	1.5	27'-8"	8.00	4.50	0.188	141	2MA0432H-270845806T4	
	75	6.0	5.7	4.0	2.7	1.8	27'-8"	9.00	4.50	0.156	135	2MA0432H-270845905T4	
	75	6.0	6.0	5.3	4.2	3.5	27'-8"	10.00	6.00	0.188	180	2MA0432H-270860106T4	
39'-0"	75	3.2	1.7	0.7	N/A	N/A	32'-8"	8.00	4.50	0.156	141	+2MA0432H-320845805T4	
	75	4.8	2.9	1.7	0.9	N/A	32'-8"	8.00	4.50	0.188	165	2MA0432H-320845806T4	
	75	5.6	3.5	2.2	1.2	N/A	32'-8"	9.00	4.50	0.156	156	+2MA0432H-320845905T4	
39'-0"	75	6.0	5.1	3.4	2.3	N/A	32'-8"	9.00	4.50	0.188	182	2MA0432H-320845906T4	
	75	6.0	5.2	3.5	2.4	1.5	32'-8"	8.00	4.50	0.250	210	2MA0432H-320845808T4	
	75	6.0	6.0	5.3	3.9	2.7	32'-8"	10.00	6.00	0.188	210	2MA0432H-320860106T4	
39'-0"	75	3.1	1.6	N/A	N/A	N/A	36'-8"	8.00	4.50	0.188	187	+2MA0432H-360845806T4	
	75	3.8	2.1	1.0	N/A	N/A	36'-8"	9.00	4.50	0.156	177	+2MA0432H-360845905T4	
	75	5.6	3.5	2.1	1.2	N/A	36'-8"	9.00	4.50	0.188	206	+2MA0432H-360845906T4	
75	5.7	3.5	2.2	1.3	N/A	36'-8"	8.00	4.50	0.250	238	2MA0432H-360845808T4		

- EPA represents the Effective Projected Area of each luminaire. Designs are limited to one luminaire per arm. Variations from sizes above are available upon inquiry at the factory. Satisfactory performance of poles is dependent upon the pole being properly attached to a supporting foundation of adequate design.
- Structure weight is a nominal value which includes the pole shaft, base plate and luminaire arm(s).  
+ Pole includes factory installed vibration damper.

## PRODUCT ORDERING CODES

CROSS SECTION	MODEL NUMBER	COLOR	OPTIONS
R			
R = Round	2MA0432H-170830506T4 2MA0432H-170840605T4 2MA0432H-170840606T4 2MA0432H-220840605T4 2MA0432H-220840606T4 2MA0432H-220840705T4 2MA0432H-220845805T4 +2MA0432H-270840705T4 2MA0432H-270845805T4 2MA0432H-270845806T4 2MA0432H-270845905T4 2MA0432H-270860106T4 +2MA0432H-320845805T4 2MA0432H-320845806T4 +2MA0432H-320845905T4 2MA0432H-320845906T4 2MA0432H-320845808T4 2MA0432H-320860106T4 +2MA0432H-360845806T4 +2MA0432H-360845905T4 +2MA0432H-360845906T4 2MA0432H-360845808T4	<b>Polyester Powder</b> DWH = White DSS = Sandstone BR = Burgundy HG = Hunter Green DNA = Natural Aluminum DCG = Charcoal Gray DMB = Medium Bronze SBN = Sanded Brown DNB = New Dark Bronze DDB = Dark Bronze SBK = Sanded Black DBL = Black DSB = Steel Blue DTG = Dark Green DBR = Red SC = Special Color (Contact Factory)	<b>Anodized</b> 204 = Clear Natural 311 = Light Bronze* 312 = Medium Bronze* 313 = Dark Bronze* 335 = Black* *Duranodic Anodize  <b>Brushed</b> SBF = Satin Brushed