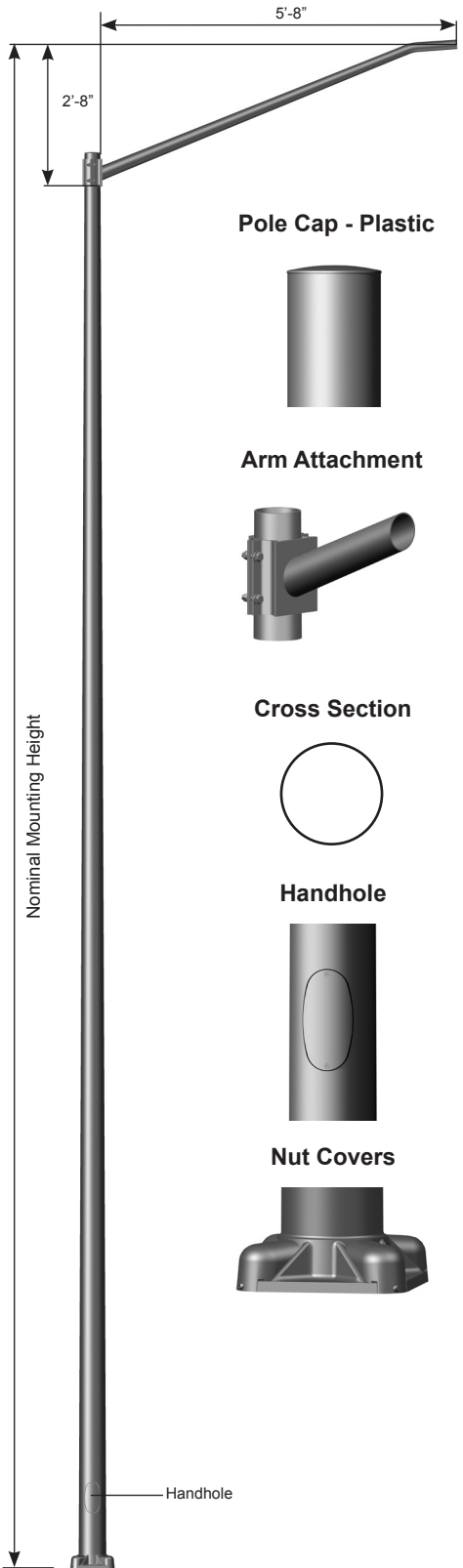


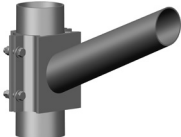
Job Name: _____	Client Name: _____
Job Location - City: _____ State: _____	Created By: _____ Date: _____
Product: _____ Quote: _____	Customer Approval: _____ Date: _____



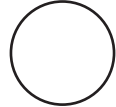
**Pole Cap - Plastic**



**Arm Attachment**



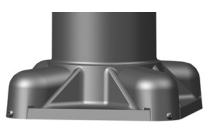
**Cross Section**



**Handhole**



**Nut Covers**

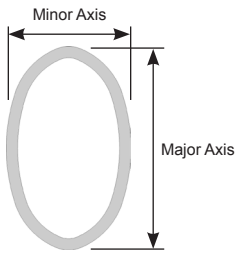


**SPECIFICATIONS**

- Pole** - The pole shaft is extruded from seamless alloy aluminum.
- Pole Top** - A removable pole cap is provided.
- Luminaire Arm** - Luminaire arms are conically tapered from seamless alloy aluminum to 2.38" OD at the luminaire end. Double luminaire arms are oriented 180° apart.
- Luminaire Arm Attachment** - Connection allows arm to be erected and held in place by gravity and secured by four bolts, lock washers, flat washers and hex nuts.
- Handhole** - A covered handhole with hardware and grounding provision are provided.
- Base Cover** - Optional decorative base covers available as special order.
- Anchor Base** - The anchor base is cast from 356 alloy aluminum. The completed assembly is heat-treated to a T6 temper. Aluminum nut covers are included with anchor base unless otherwise specified.
- Anchor Bolts** - Anchor bolts conform to ASTM F1554 Grade 55 and are provided with two hex nuts and two flat washers. Bolts have an "L" bend on one end and are galvanized a minimum of 12" on the threaded end.
- Hardware** - All structural and non-structural fasteners are stainless steel.
- Finish** - The standard finish for the pole assembly and components is satin brushed, natural anodize, duranodic or polyester powder applied coating in accordance with Valmont's Specifications. Additional finish options available upon request.
- Design Criteria** - Please reference Design Criteria Specification for appropriate

**ARM DATA**

**Ovalized Arm Cross Section**



**Double Arm Arrangement**



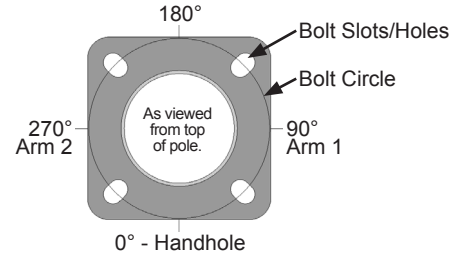
# ROUND TAPERED ALUMINUM Elliptical Mast Arm 6' Double - Clamp Mount

Job Name: _____	Client Name: _____
Job Location - City: _____ State: _____	Created By: _____ Date: _____
Product: _____ Quote: _____	Customer Approval: _____ Date: _____

## ANCHORAGE DATA

POLE		BASE PLATE				ANCHOR BOLTS		
BASE OD (IN)	WALL THK (IN)	BOLT CIRCLE		SQUARE (IN)	THK (IN)	DIA x LENGTH x HOOK (IN)	PROJECTION (IN)	± (IN)
		DIA (IN)	± (IN)					
6.00	0.156	9.50	0.75	10.32	0.630	0.75 x 17.00 x 3.00	3.50	N/A
6.00	0.188	9.50	0.75	10.32	0.630	0.75 x 17.00 x 3.00	3.50	N/A
7.00	0.156	10.56	0.43	11.26	0.750	1.00 x 36.00 x 4.00	4.13	N/A
8.00	0.156	11.63	0.37	12.05	0.750	1.00 x 36.00 x 4.00	4.13	N/A
8.00	0.188	11.63	0.37	12.05	0.750	1.00 x 36.00 x 4.00	4.13	N/A
8.00	0.250	11.63	0.37	12.05	0.750	1.00 x 36.00 x 4.00	4.13	N/A
9.00	0.156	13.25	0.75	12.48	1.250	1.00 x 36.00 x 4.00	4.13	N/A
9.00	0.188	13.25	0.75	12.48	1.250	1.00 x 36.00 x 4.00	4.13	N/A
10.00	0.188	14.31	0.69	13.19	1.250	1.00 x 36.00 x 4.00	4.75	N/A
10.00	0.250	14.50	0.50	14.00	1.250	1.25 x 42.00 x 6.00	5.25	N/A

Anchor Base Detail



## LOAD AND DIMENSIONAL DATA

NOMINAL MOUNTING HEIGHT	MAX WEIGHT <sup>1</sup> (LBS)	DESIGN INFORMATION					POLE DIMENSIONS						STRUCTURE WEIGHT <sup>2</sup> (LBS)	MODEL NUMBER
		70 MPH w/1.3 GUST	80 MPH w/1.3 GUST	90 MPH w/1.3 GUST	100 MPH w/1.3 GUST	110 MPH w/1.3 GUST	POLE HEIGHT	BASE OD (IN)	TOP OD (IN)	WALL THK (IN)				
		MAX EPA <sup>1</sup> (SQ FT)	MAX EPA <sup>1</sup> (SQ FT)	MAX EPA <sup>1</sup> (SQ FT)	MAX EPA <sup>1</sup> (SQ FT)	MAX EPA <sup>1</sup> (SQ FT)								
20'-0"	75	5.7	3.6	2.2	1.3	0.7	17'-8"	6.00	4.00	0.156	77	2MA0632C-170840605T4		
	75	6.0	4.7	3.3	2.2	1.4	17'-8"	6.00	4.00	0.188	87	2MA0632C-170840606T4		
	75	6.0	4.7	3.6	2.8	2.1	17'-8"	7.00	4.00	0.156	84	2MA0632C-170840705T4		
25'-0"	75	5.5	3.4	2.0	1.1	N/A	22'-8"	7.00	4.00	0.156	99	2MA0632C-220840705T4		
	75	6.0	4.7	3.6	2.7	1.8	22'-8"	8.00	4.50	0.156	110	2MA0632C-220845805T4		
	75	6.0	4.7	3.6	2.8	2.3	22'-8"	8.00	4.50	0.188	126	2MA0632C-220845806T4		
30'-0"	75	6.0	4.7	3.6	2.8	2.3	22'-8"	9.00	4.50	0.156	122	2MA0632C-220845905T4		
	75	2.9	1.3	N/A	N/A	N/A	27'-8"	7.00	4.00	0.156	115	+2MA0632C-270840705T4		
	75	5.3	3.2	1.9	1.0	N/A	27'-8"	8.00	4.50	0.156	128	2MA0632C-270845805T4		
35'-0"	75	6.0	4.7	3.1	2.0	1.2	27'-8"	8.00	4.50	0.188	147	2MA0632C-270845806T4		
	75	6.0	4.7	3.6	2.4	1.5	27'-8"	9.00	4.50	0.156	141	2MA0632C-270845905T4		
	75	6.0	4.7	3.6	2.8	2.3	27'-8"	8.00	4.50	0.250	185	2MA0632C-270845808T4		
39'-0"	75	6.0	4.7	3.6	2.8	2.3	27'-8"	9.00	4.50	0.188	162	2MA0632C-270845906T4		
	75	4.5	2.6	1.4	N/A	N/A	32'-8"	8.00	4.50	0.188	171	2MA0632C-320845806T4		
	75	5.3	3.2	1.8	0.9	N/A	32'-8"	9.00	4.50	0.156	162	+2MA0632C-320845905T4		
39'-0"	75	6.0	4.7	3.1	1.9	1.1	32'-8"	9.00	4.50	0.188	188	2MA0632C-320845906T4		
	75	6.0	4.7	3.2	2.0	1.2	32'-8"	8.00	4.50	0.250	216	2MA0632C-320845808T4		
	75	6.0	4.7	3.6	2.8	2.3	32'-8"	10.00	6.00	0.188	216	2MA0632C-320860106T4		
39'-0"	75	2.8	1.2	N/A	N/A	N/A	36'-8"	8.00	4.50	0.188	193	+2MA0632C-360845806T4		
	75	5.3	3.1	1.8	0.8	N/A	36'-8"	9.00	4.50	0.188	212	+2MA0632C-360845906T4		
	75	5.4	3.2	1.8	0.9	N/A	36'-8"	8.00	4.50	0.250	244	2MA0632C-360845808T4		
39'-0"	75	6.0	4.7	3.6	2.2	1.2	36'-8"	10.00	6.00	0.188	243	2MA0632C-360860106T4		
	75	6.0	4.7	3.6	2.8	2.3	36'-8"	10.00	6.00	0.250	314	2MA0632C-360860108T4		

1. EPA represents the Effective Projected Area of each luminaire. Designs are limited to one luminaire per arm. Variations from sizes above are available upon inquiry at the factory. Satisfactory performance of poles is dependent upon the pole being properly attached to a supporting foundation of adequate design.  
 2. Structure weight is a nominal value which includes the pole shaft, base plate and luminaire arm(s).  
 + Pole includes factory installed vibration damper.

## PRODUCT ORDERING CODES

CROSS SECTION	MODEL NUMBER	COLOR	OPTIONS
R			
R = Round	2MA0632C-170840605T4 2MA0632C-170840606T4 2MA0632C-170840705T4 2MA0632C-220840705T4 2MA0632C-220840805T4 2MA0632C-220840806T4 2MA0632C-220840905T4 +2MA0632C-270840705T4 2MA0632C-270845805T4 2MA0632C-270845806T4 2MA0632C-270845905T4 2MA0632C-270845808T4 2MA0632C-270845906T4 2MA0632C-320845806T4 +2MA0632C-320845905T4 2MA0632C-320845906T4 2MA0632C-320845808T4 2MA0632C-320860106T4 +2MA0632C-360845806T4 +2MA0632C-360845906T4 2MA0632C-360845808T4 2MA0632C-360845106T4 2MA0632C-360845108T4	<b>Polyester Powder</b> DWH = White DSS = Sandstone BR = Burgundy HG = Hunter Green DNA = Natural Aluminum DCG = Charcoal Gray DMB = Medium Bronze SBN = Sanded Brown DNB = New Dark Bronze DDB = Dark Bronze SBK = Sanded Black DBL = Black DSB = Steel Blue DTG = Dark Green DBR = Red SC = Special Color (Contact Factory)	<b>Anodized</b> 204 = Clear Natural 311 = Light Bronze* 312 = Medium Bronze* 313 = Dark Bronze* 335 = Black* *Duranodic Anodize  <b>Brushed</b> SBF = Satin Brushed
			See Accessories at valmontstructures.com (Please Specify with Code)