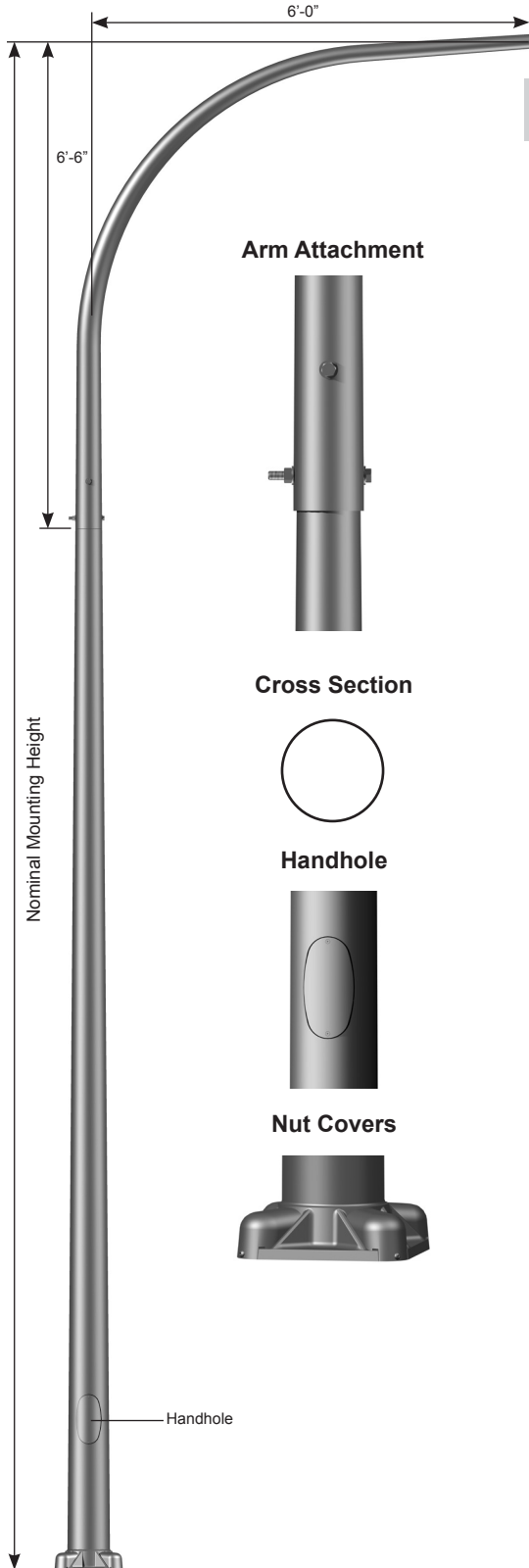


Job Name: _____	Client Name: _____
Job Location - City: _____ State: _____	Created By: _____ Date: _____
Product: _____ Quote: _____	Customer Approval: _____ Date: _____



**SPECIFICATIONS**

**Pole** - The pole shaft is extruded from seamless alloy aluminum.

**Davit Arm** - Davit arms are conically tapered from seamless alloy aluminum to 2.38" OD at the luminaire end. Davit arm members have a 4' bend radius and a 6'-6" rise.

**Davit Arm Attachment** - Connection allows arm to be erected and held in place by gravity and secured by two stainless steel through bolts.

**Handhole** - A covered handhole with hardware and grounding provision are provided.

**Base Cover** - Optional decorative base covers available as special order.

**Anchor Base** - The anchor base is cast from 356 alloy aluminum. The completed assembly is heat-treated to a T6 temper. Aluminum nut covers are included with anchor base unless otherwise specified.

**Anchor Bolts** - Anchor bolts conform to ASTM F1554 Grade 55 and are provided with two hex nuts and two flat washers. Bolts have an "L" bend on one end and are galvanized a minimum of 12" on the threaded end.

**Hardware** - All structural and non-structural fasteners are stainless steel.

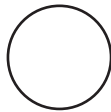
**Finish** - The standard finish for the pole assembly and components is satin brushed, natural anodize, duranodic or polyester powder applied coating in accordance with Valmont's Specifications. Additional finish options available upon request.

**Design Criteria** - Please reference Design Criteria Specification for appropriate design conditions.

**Arm Attachment**



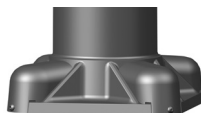
**Cross Section**



**Handhole**



**Nut Covers**



Handhole

# ROUND TAPERED ALUMINUM Davit Arm 6' Single

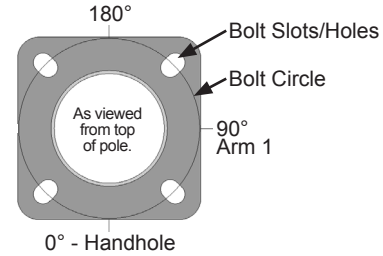


Job Name: _____	Client Name: _____
Job Location - City: _____ State: _____	Created By: _____ Date: _____
Product: _____ Quote: _____	Customer Approval: _____ Date: _____

## ANCHORAGE DATA

POLE		BASE PLATE			ANCHOR BOLTS			
BASE OD (IN)	WALL THK (IN)	BOLT CIRCLE		SQUARE (IN)	THK (IN)	DIA x LENGTH x HOOK (IN)	PROJECTION (IN)	± (IN)
		DIA (IN)	± (IN)					
6.00	0.156	9.50	0.75	10.32	0.630	0.75 x 17.00 x 3.00	3.50	N/A
7.00	0.156	10.56	0.43	11.26	0.750	1.00 x 36.00 x 4.00	4.13	N/A
8.00	0.156	11.63	0.37	12.05	0.750	1.00 x 36.00 x 4.00	4.13	N/A
8.00	0.188	11.63	0.37	12.05	0.750	1.00 x 36.00 x 4.00	4.13	N/A
8.00	0.250	11.63	0.37	12.05	0.750	1.00 x 36.00 x 4.00	4.13	N/A
9.00	0.156	13.25	0.75	12.48	1.250	1.00 x 36.00 x 4.00	4.13	N/A
9.00	0.188	13.25	0.75	12.48	1.250	1.00 x 36.00 x 4.00	4.13	N/A

Anchor Base Detail



## LOAD AND DIMENSIONAL DATA

NOMINAL MOUNTING HEIGHT	QUANTITY OF ARMS	MAX WEIGHT <sup>1</sup> (LBS)	DESIGN INFORMATION					POLE DIMENSIONS					STRUCTURE WEIGHT <sup>2</sup> (LBS)	MODEL NUMBER
			70 MPH w/1.3 GUST	80 MPH w/1.3 GUST	90 MPH w/1.3 GUST	100 MPH w/1.3 GUST	110 MPH w/1.3 GUST	POLE HEIGHT	BASE OD (IN)	TOP OD (IN)	WALL THK (IN)			
20'-0"	Single	75	6.0	6.0	6.0	4.7	3.4	13'-6"	6.00	4.00	0.156	69	200065106D4Z	
		75	6.0	5.2	3.3	2.0	1.1	18'-6"	6.00	4.00	0.156	83	250065106D4Z	
25'-0"	Single	75	6.0	6.0	6.0	4.5	3.2	18'-6"	7.00	4.00	0.156	91	250075106D4Z	
		75	4.5	2.3	0.8	N/A	N/A	23'-6"	6.00	4.00	0.156	98	300065106D4Z	
30'-0"	Single	75	6.0	5.4	3.4	2.0	1.0	23'-6"	7.00	4.00	0.156	109	300075106D4Z	
		75	6.0	6.0	6.0	4.4	2.9	23'-6"	8.00	4.50	0.156	122	300085106D4Z	
35'-0"	Single	75	5.0	2.5	1.0	N/A	N/A	28'-6"	7.00	4.00	0.156	124	350075106D4Z	
		75	6.0	5.5	3.4	2.0	0.9	28'-6"	8.00	4.50	0.156	139	350085106D4Z	
		75	6.0	6.0	5.3	3.5	2.2	28'-6"	8.00	4.50	0.188	160	350086106D4Z	
		75	6.0	6.0	6.0	4.2	2.7	28'-6"	9.00	4.50	0.156	153	350095106D4Z	
		75	6.0	6.0	6.0	6.0	4.3	28'-6"	9.00	4.50	0.188	176	350096106D4Z	
		75	6.0	6.0	6.0	6.0	4.6	28'-6"	8.00	4.50	0.250	200	350088106D4Z	
40'-0"	Single	75	5.2	2.6	1.1	N/A	N/A	33'-6"	8.00	4.50	0.156	159	400085106D4Z	
		75	6.0	4.6	2.7	1.3	N/A	33'-6"	8.00	4.50	0.188	183	400086106D4Z	
		75	6.0	5.6	3.5	1.9	0.8	33'-6"	9.00	4.50	0.156	175	400095106D4Z	
		75	6.0	6.0	5.5	3.6	2.1	33'-6"	9.00	4.50	0.188	202	400096106D4Z	
		75	6.0	6.0	5.7	3.8	2.3	33'-6"	8.00	4.50	0.250	231	400088106D4Z	

- EPA represents the Effective Projected Area of each luminaire. Designs are limited to one luminaire per arm. Variations from sizes above are available upon inquiry at the factory. Satisfactory performance of poles is dependent upon the pole being properly attached to a supporting foundation of adequate design.
- Structure weight is a nominal value which includes the pole shaft, base plate and luminaire arm(s).

## PRODUCT ORDERING CODES

CROSS SECTION	MODEL NUMBER	COLOR		OPTIONS
R				
R = Round	200065106D4Z 250065106D4Z 250075106D4Z 300065106D4Z 300075106D4Z 300085106D4Z 350075106D4Z 350085106D4Z 350086106D4Z 350095106D4Z 350096106D4Z 350088106D4Z 400085106D4Z 400086106D4Z 400095106D4Z 400096106D4Z 400088106D4Z	<b>Polyester Powder</b> DWH = White DSS = Sandstone BR = Burgundy HG = Hunter Green DNA = Natural Aluminum DCG = Charcoal Gray DMB = Medium Bronze SBN = Sanded Brown DNB = New Dark Bronze DDB = Dark Bronze SBK = Sanded Black DBL = Black DSB = Steel Blue DTG = Dark Green DBR = Red SC = Special Color (Contact Factory)	<b>Anodized</b> 204 = Clear Natural 311 = Light Bronze* 312 = Medium Bronze* 313 = Dark Bronze* 335 = Black* *Duranodize Anodize  <b>Brushed</b> SBF = Satin Brushed	See Accessories at valmontstructures.com (Please Specify with Code)