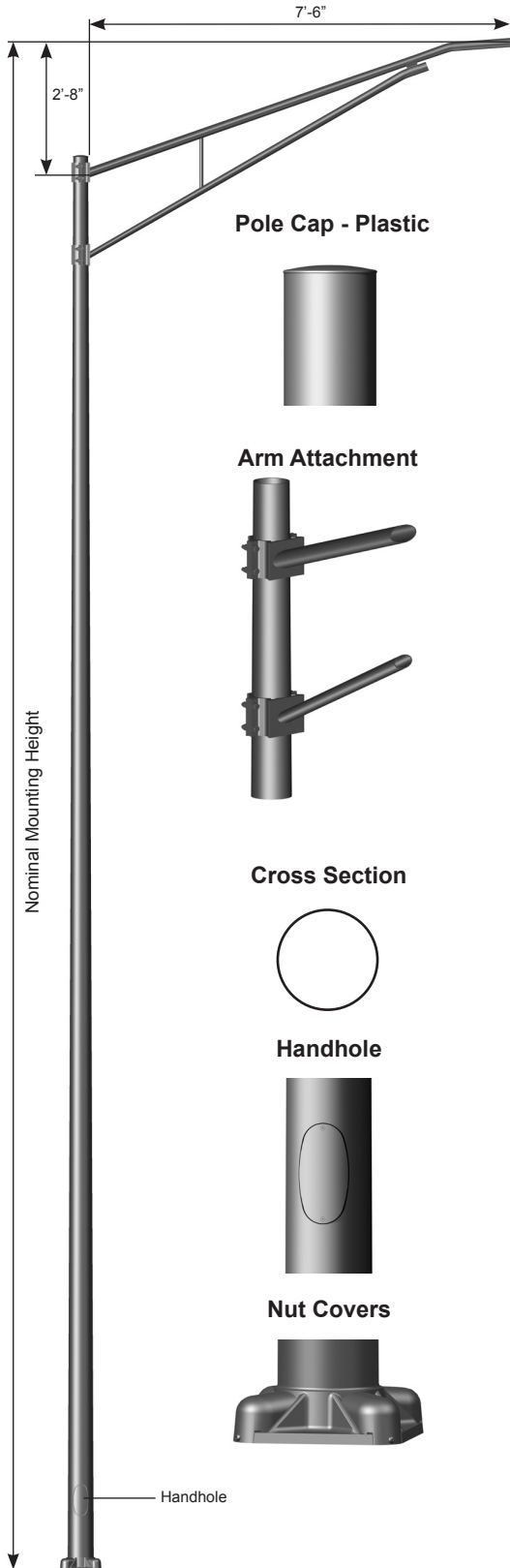


Job Name: _____	Client Name: _____
Job Location - City: _____ State: _____	Created By: _____ Date: _____
Product: _____ Quote: _____	Customer Approval: _____ Date: _____



SPECIFICATIONS

Pole - The pole shaft is extruded from seamless alloy aluminum.

Pole Top - A removable pole cap is provided.

Luminaire Arm - Luminaire arms are conically tapered from seamless alloy aluminum to 2.38" OD at the luminaire end.

Luminaire Arm Attachment - Luminaire arms are conically tapered from seamless alloy aluminum to 2.38" OD at the luminaire end. Double luminaire arms are oriented 180° apart.

Handhole - A covered handhole with hardware and grounding provision are provided.

Base Cover - Optional decorative base covers available as special order.

Anchor Base - The anchor base is cast from 356 alloy aluminum. The completed assembly is heat-treated to a T6 temper. Aluminum nut covers are included with anchor base unless otherwise specified.

Anchor Bolts - Anchor bolts conform to ASTM F1554 Grade 55 and are provided with two hex nuts and two flat washers. Bolts have an "L" bend on one end and are galvanized a minimum of 12" on the threaded end.

Hardware - All structural and non-structural fasteners are stainless steel.

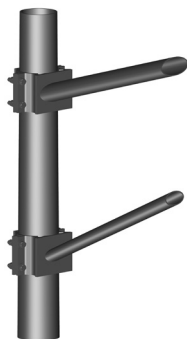
Finish - The standard finish for the pole assembly and components is satin brushed, natural anodize, duranodic or polyester powder applied coating in accordance with Valmont's Specifications. Additional finish options available upon request.

Design Criteria - Please reference Design Criteria Specification for appropriate design conditions.

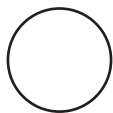
Pole Cap - Plastic



Arm Attachment



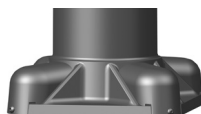
Cross Section



Handhole

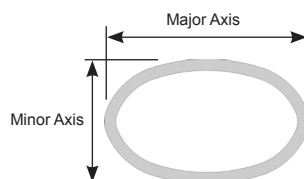


Nut Covers

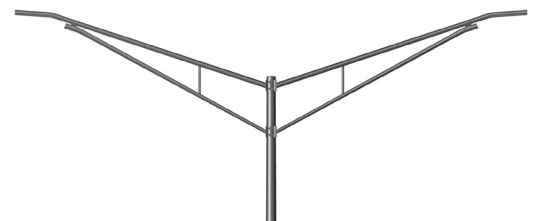


ARM DATA

Ovalized Arm Cross Section



Double Arm Arrangement



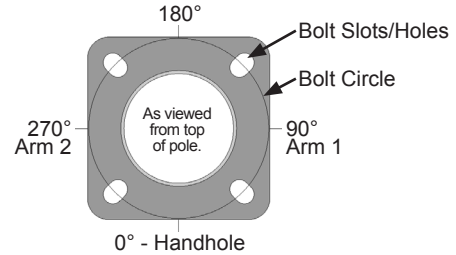
ROUND TAPERED ALUMINUM Elliptical Truss Arm 8' Double - Clamp Mount

Job Name: _____	Client Name: _____
Job Location - City: _____ State: _____	Created By: _____ Date: _____
Product: _____ Quote: _____	Customer Approval: _____ Date: _____

ANCHORAGE DATA

POLE		BASE PLATE				ANCHOR BOLTS			
BASE OD (IN)	WALL THK (IN)	BOLT CIRCLE		SQUARE (IN)	THK (IN)	DIA x LENGTH x HOOK (IN)	PROJECTION (IN)	± (IN)	
		DIA (IN)	± (IN)						
6.00	0.156	9.50	0.75	10.32	0.630	0.75 x 17.00 x 3.00	3.50	N/A	
6.00	0.188	9.50	0.75	10.32	0.630	0.75 x 17.00 x 3.00	3.50	N/A	
7.00	0.156	10.56	0.43	11.26	0.750	1.00 x 36.00 x 4.00	4.13	N/A	
8.00	0.156	11.63	0.37	12.05	0.750	1.00 x 36.00 x 4.00	4.13	N/A	
8.00	0.188	11.63	0.37	12.05	0.750	1.00 x 36.00 x 4.00	4.13	N/A	
8.00	0.250	11.63	0.37	12.05	0.750	1.00 x 36.00 x 4.00	4.13	N/A	
9.00	0.156	13.25	0.75	12.48	1.250	1.00 x 36.00 x 4.00	4.13	N/A	
9.00	0.188	13.25	0.75	12.48	1.250	1.00 x 36.00 x 4.00	4.13	N/A	
10.00	0.188	14.31	0.69	13.19	1.250	1.00 x 36.00 x 4.00	4.75	N/A	
10.00	0.250	14.50	0.50	14.00	1.250	1.25 x 42.00 x 6.00	5.25	N/A	

Anchor Base Detail



LOAD AND DIMENSIONAL DATA

NOMINAL MOUNTING HEIGHT	MAX WEIGHT ¹ (LBS)	DESIGN INFORMATION					POLE DIMENSIONS					MODEL NUMBER
		70 MPH w/1.3 GUST	80 MPH w/1.3 GUST	90 MPH w/1.3 GUST	100 MPH w/1.3 GUST	110 MPH w/1.3 GUST	POLE HEIGHT	BASE OD (IN)	TOP OD (IN)	WALL THK (IN)	STRUCTURE WEIGHT ² (LBS)	
		MAX EPA ¹ (SQ FT)	MAX EPA ¹ (SQ FT)	MAX EPA ¹ (SQ FT)	MAX EPA ¹ (SQ FT)	MAX EPA ¹ (SQ FT)						
20'-0"	75	6.0	4.0	2.7	1.8	1.2	17'-8"	6.00	4.00	0.156	104	2TA0832C-170840605T4
	75	6.0	5.3	3.7	2.6	1.9	17'-8"	6.00	4.00	0.188	114	2TA0832C-170840606T4
25'-0"	75	4.6	2.8	1.7	0.9	N/A	22'-8"	6.00	4.00	0.188	130	2TA0832C-220840606T4
	75	5.9	3.8	2.5	1.6	1.0	22'-8"	7.00	4.00	0.156	126	2TA0832C-220840705T4
	75	6.0	6.0	4.4	3.2	2.3	22'-8"	8.00	4.50	0.156	137	2TA0832C-220845805T4
30'-0"	75	5.7	3.7	2.4	1.5	0.9	27'-8"	8.00	4.50	0.156	155	2TA0832C-270845805T4
	75	6.0	5.2	3.6	2.5	1.7	27'-8"	8.00	4.50	0.188	174	2TA0832C-270845806T4
	75	6.0	5.8	4.1	2.9	2.0	27'-8"	9.00	4.50	0.156	168	2TA0832C-270845905T4
	75	6.0	6.0	5.6	4.1	3.0	27'-8"	9.00	4.50	0.188	189	2TA0832C-270845906T4
	75	6.0	6.0	5.8	4.3	3.2	27'-8"	8.00	4.50	0.250	212	2TA0832C-270845808T4
35'-0"	75	5.0	3.0	1.9	1.1	N/A	32'-8"	8.00	4.50	0.188	198	2TA0832C-320845806T4
	75	5.7	3.6	2.3	1.4	0.7	32'-8"	9.00	4.50	0.156	189	+2TA0832C-320845905T4
	75	6.0	5.2	3.6	2.4	1.6	32'-8"	9.00	4.50	0.188	215	2TA0832C-320845906T4
	75	6.0	5.3	3.7	2.5	1.7	32'-8"	8.00	4.50	0.250	243	2TA0832C-320845808T4
39'-0"	75	6.0	6.0	5.6	4.0	2.8	32'-8"	10.00	6.00	0.188	243	2TA0832C-320860106T4
	75	5.7	3.6	2.3	1.3	N/A	36'-8"	9.00	4.50	0.188	239	+2TA0832C-360845906T4
	75	5.9	3.7	2.3	1.4	0.7	36'-8"	8.00	4.50	0.250	271	2TA0832C-360845808T4
	75	6.0	5.9	4.1	2.7	1.7	36'-8"	10.00	6.00	0.188	270	2TA0832C-360860106T4
75	6.0	6.0	6.0	4.8	3.5	36'-8"	10.00	6.00	0.250	341	2TA0832C-360860108T4	

- EPA represents the Effective Projected Area of each luminaire. Designs are limited to one luminaire per arm. Variations from sizes above are available upon inquiry at the factory. Satisfactory performance of poles is dependent upon the pole being properly attached to a supporting foundation of adequate design.
- Structure weight is a nominal value which includes the pole shaft, base plate and luminaire arm(s).
+ Pole includes factory installed vibration damper.

PRODUCT ORDERING CODES

CROSS SECTION	MODEL NUMBER	COLOR		OPTIONS
R				
R = Round	2TA0832C-170840605T4 2TA0832C-170840606T4 2TA0832C-220840606T4 2TA0832C-220840705T4 2TA0832C-220845805T4 2TA0832C-270845805T4 2TA0832C-270845806T4 2TA0832C-270845905T4 2TA0832C-270845906T4 2TA0832C-270845908T4 2TA0832C-320845806T4 2TA0832C-320845905T4 +2TA0832C-320845905T4 2TA0832C-320845906T4 2TA0832C-320845808T4 2TA0832C-320860106T4 +2TA0832C-360845906T4 2TA0832C-360845808T4 2TA0832C-360860106T4 2TA0832C-360860108T4	Polyester Powder DWH = White DSS = Sandstone BR = Burgundy HG = Hunter Green DNA = Natural Aluminum DCG = Charcoal Gray DMB = Medium Bronze SBN = Sanded Brown DNB = New Dark Bronze DDB = Dark Bronze SBK = Sanded Black DBL = Black DSB = Steel Blue DTG = Dark Green DBR = Red SC = Special Color (Contact Factory)	Anodized 204 = Clear Natural 311 = Light Bronze* 312 = Medium Bronze* 313 = Dark Bronze* 335 = Black* *Duranodic Anodize Brushed SBF = Satin Brushed	See Accessories at valmontstructures.com (Please Specify with Code)