

CATALOG #: _____

Type: _____

PROJECT: _____

FEATURES

- Support human-centric design with adaptive, individualized lighting using tunable white light
- Designed for use in pairs to asymmetrically illuminate patient beds
- Fixtures can be installed to allow maintenance access without working directly over patient beds
- Optional low-voltage controller allows for bedside lighting control
- Provides varying levels of illumination through dimming driver
- Anti-microbial white finish standard
- Made Right Here® in the USA



SPECIFICATIONS

- HOUSING – 22-gauge die-formed C.R.S.
- DOOR FRAME – Steel door frame with integral torsion springs to secure the frame within the fixture.
- SHIELDING – Frosted, ribbed acrylic.
- FINISH – Textured 92% minimum average reflective white anti-microbial powder coating bonded to phosphate-free, multi-stage pretreated metal. All parts painted after fabrication to facilitate installation, increase efficiency, and inhibit corrosion.
- ELECTRICAL – High-quality mid-power LED board. L70 > 60,000 hours per IES TM-21. Tunable White products use LEDs of multiple CCTs and may produce a perceptibly different shade of white from single-CCT products at the same CCT. All CCTs are within 3 MacAdam ellipses.
- MOUNTING – Designed for NEMA Type “G” 1” grid ceiling standard. For NEMA Type “NFG” and “SG” 9/16” grid installations, specify EQCLIPS option. Drywall kit accessories available for flange applications, shipped separately, see options. Fixture must be installed prior to Drywall Kit.
- LISTINGS –
 - cCSAus certified as luminaire suitable for dry or damp locations.
 - Complies with the Buy American Act and other federal regulations. Request certification at hew.com/baa.
- WARRANTY – 5-year limited warranty, see hew.com/warranty.

ORDERING EXAMPLE: MD2 G - 4 - L30/8TW - A - OPTIONS - DALI - UNV

ORDERING INFO

SERIES	CEILING TYPE ^[1]	LENGTH	LUMENS ^[2]	CRI	CCT
MD2	G NEMA Type “G”, “SS”, and “NFG”	4 4’	L30 3,000lm	8 80 9 90 ^[3]	TW Tunable white (3000K-5000K) TW2 Tunable white (2700K-6500K)

SHIELDING

A	Curved frosted ribbed acrylic
A/CHA118	Curved frosted ribbed acrylic with clear, high temperature non-prismatic lens
A/PC118	Curved frosted ribbed acrylic with clear polycarbonate lens

OPTIONS

EM/10W	10-watt emergency battery
GLR	Fuse, fast blow ^[4]
EQCLIPS	Earthquake clips ^[5]
LVC1	1-circuit low-voltage controller, wired for Ambient ^[6]
LVC3DIM	1-circuit dimming low-voltage controller ^[7]
SG	Single closed-cell foam gasketing ^[8]
DFK-0648AMW	Drywall kit, 6” x 48”, anti-microbial white ^[9]

CONTROL ^[10]

DALI	Driver prewired for DALI applications
DIM	Dimming driver with (1) 0-10V signal to control dimming and (1) 0-10V signal to control CCT
DMX	Driver prewired for DMX applications
PSQ	Lutron T-Series 2-channel tunable white 1%.

VOLTAGE

120	120V
277	277V
UNV	120-277V

NOTES

- When using in NEMA Type “SS” or “NFG” applications, must specify EQCLIPS option. For flange installations use the Drywall Kit (DFK), ordered separately, see page 3 for DRYWALL KIT (DFK) OPTIONS. Fixture must be installed prior to Drywall Kit (DFK).
- Lumen output based on 4000 CCT and A Shielding. Actual lumens may vary +/-5%, see page 2 for FIXTURE PERFORMANCE DATA.
- Extended lead times may apply. Consult factory for availability.
- Specify voltage. Requires one per driver.
- 2 per fixture. Optional for 1” grid installations. Required for 9/16” grid mounting.

- 120V or 277V only. Not dimming compatible. LVC wall plate accessories available, see hew.com for details.
- 120V or 277V only. DIM driver only. LVC wall plate accessories available, see hew.com for details.
- Field installed.
- See page 3 for DRYWALL KIT (DFK) OPTIONS. Fixture must be installed prior to Drywall Kit (DFK).
- See page 3 for CONTROL DETAILS.



MD2 tunable WHITE Asymmetric Medical Bed Light

FIXTURE PERFORMANCE DATA

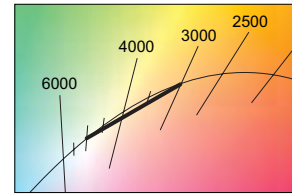
LED PACKAGE	A			A/CHA118		
	DELIVERED LUMENS	WATTAGE	EFFICACY (lm/W)	DELIVERED LUMENS	WATTAGE	EFFICACY (lm/W)
4' L30	3049	33.1	92	2862	33.1	86

MULTIPLIER TABLE

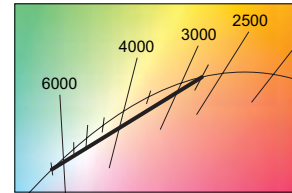
	COLOR TEMPERATURE				
	CCT	TW		TW2	
		LUMENS	WATTAGE	LUMENS	WATTAGE
80 CRI	2700K	—	—	0.93	1.02
	3000K	0.95	1.04	0.95	1.01
	3500K	0.98	1.02	0.98	1.00
	4000K	1.00	1.00	1.00	1.00
	5000K	0.96	1.04	1.02	1.00
	6500K	—	—	1.01	1.04
90 CRI	2700K	—	—	0.93	1.02
	3000K	0.91	1.03	0.95	1.01
	3500K	0.96	1.01	0.98	1.00
	4000K	1.00	1.00	1.00	1.00
	5000K	1.03	1.03	1.03	1.00
	6500K	—	—	1.02	1.04

- Photometrics tested in accordance with IESNA LM-79. Results shown are based on 25°C ambient temperature.
- Wattage shown is average for 120V through 277V input.
- Results based on 4000K, 80 CRI and A Shielding, actual lumens may vary +/-5%
- Use multiplier table to calculate additional options.

TW

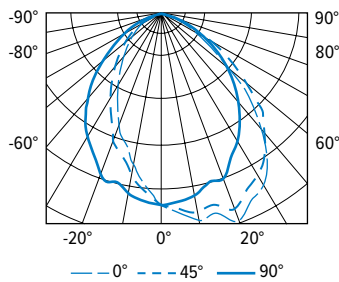


TW2



PHOTOMETRY

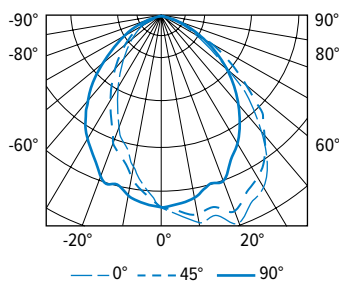
MD2G-4-L30/8TW-A-DALI Total Luminaire Output: 3049 lumens; 33.1 Watts | Efficacy: 92 lm/W | 80 CRI; 4000K CCT



VERTICAL ANGLE	HORIZONTAL ANGLE					ZONAL LUMENS
	0°	45°	90°	135°	180°	
0	1441	1441	1441	1441	1441	
5	1513	1476	1407	1348	1311	134
15	1555	1487	1310	1118	1030	374
25	1556	1471	1198	892	768	548
35	1370	1334	1011	667	550	615
45	957	1064	768	455	364	562
55	500	663	510	289	225	413
65	233	345	310	166	135	253
75	99	134	145	73	65	119
85	21	30	35	18	15	30
90	0	0	0	0	0	

LUMEN SUMMARY	ZONE	LUMENS	% FIXTURE
	0 - 30	1056	35
	0 - 40	1671	55
	0 - 60	2646	87
	0 - 90	3049	100
	0 - 180	3049	100

MD2G-4-L30/8TW-A/CHA118-DALI Total Luminaire Output: 2862 lumens; 33.1 Watts | Efficacy: 86 lm/W | 80 CRI; 4000K CCT

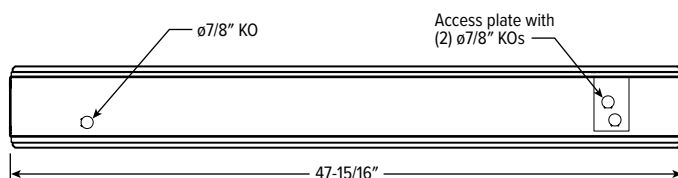


VERTICAL ANGLE	HORIZONTAL ANGLE					ZONAL LUMENS
	0°	45°	90°	135°	180°	
0	1366	1366	1366	1366	1366	
5	1434	1400	1340	1284	1254	128
15	1471	1409	1247	1073	991	356
25	1476	1394	1145	869	758	524
35	1303	1264	968	657	549	591
45	915	1006	737	455	374	541
55	466	614	480	290	232	391
65	197	296	277	157	130	226
75	65	93	108	57	51	89
85	11	14	15	10	10	16
90	0	0	0	0	0	

LUMEN SUMMARY	ZONE	LUMENS	% FIXTURE
	0 - 30	1008	35
	0 - 40	1599	56
	0 - 60	2531	88
	0 - 90	2862	100
	0 - 180	2862	100

FIXTURE DETAILS

BACKVIEW



H.E. Williams, Inc.

Carthage, Missouri

www.hew.com

417-358-4065

Designed and Manufactured in the USA

Information contained herein is subject to change without notice.

REV.06/13/23.JL

Healthcare

Page 2 of 3

MD2 tunable **WHITE** Asymmetric Medical Bed Light

CONTROL DETAILS

DIM



DALI



DMX



LUTRON T-SERIES

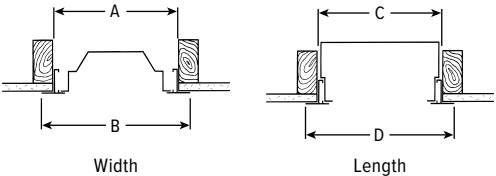


DRYWALL KIT (DFK) OPTIONS

ORDERING EXAMPLE: DFK - 06 48 W			
SERIES	WIDTH	LENGTH	FINISH
DFK Drywall Kit	See table below	See table below	W White AMW Anti-microbial white

TYPICAL INSTALLATION

Refer to table for dimensions.



CATALOG NUMBER	NOMINAL SIZE	ROUGH-IN		FINISH TRIM SIZE	
		WIDTH (A)	LENGTH (C)	WIDTH (B)	LENGTH (D)
DFK-0648__	6" x 4'	6-3/8"	48-3/8"	7-5/16"	49-5/16"

