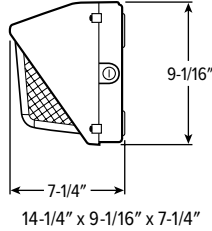


# WP1 LED Medium Shallow-Back Wall Pack



CATALOG #: \_\_\_\_\_

Type: \_\_\_\_\_

PROJECT: \_\_\_\_\_

## FEATURES

- Wet location listed
- Fully gasketed side-hinging door
- Optional stainless steel wireguard, cutoff shields, and vandal shield available
- 1/2" NPS threaded hub and plugged conduit entry points

## SPECIFICATIONS

- HOUSING** – Die-cast aluminum.
- LENS** – Impact-resistant prismatic borosilicate glass refractor.
- FINISH** – Powder coated finish on heavy-duty die-cast housing. Bronze finish only.
- ELECTRICAL** – Electronic 120-277V or 347/480V dimmable driver. Metal core PCB LED array.
- MOUNTING** – Wall mounts directly over a 4" maximum recessed outlet box or accepts 1/2" surface conduit.
- LISTINGS** –
  - cCSAus listed to STD22.2 No. 250.0 certified as luminaire suitable for wet locations. 40°C maximum ambient operating temperature.
- WARRANTY** – 5-year limited warranty.

## ORDERING EXAMPLE: WP1 - L44/850 - OPTIONS - DIM - UNV

### ORDERING INFO

SERIES	LUMENS	CRI	CCT	OPTIONS	DRIVER
WP1 <sup>[1]</sup>	L44 4,400lm	8 80	50 5000K	<b>SF</b> Single fuse <sup>[2]</sup> <b>DF</b> Double fuse <sup>[3]</sup> <b>SP2</b> 2.5kV surge protection <sup>[4]</sup> <b>PC</b> Factory-installed photocell <sup>[5]</sup> <b>PVS</b> Polycarbonate vandal shield <sup>[6]</sup> <b>WG</b> Stainless steel wireguard <sup>[7]</sup>	<b>DIM</b> Dimming driver prewired for 0-10V low voltage applications

### VOLTAGE

- 120 120V
- 208 208V
- 240 240V
- 277 277V
- UNV 120-277V
- 347 347V
- 480 480V

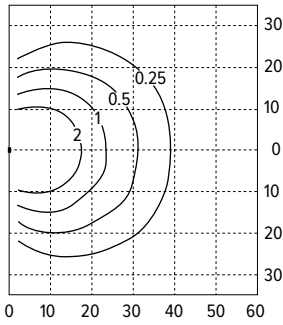
### NOTES

- This fixture does not comply with Buy American/ARRA and similar regulatory programs.
- 120V, 277V, or 347V only; must specify voltage.
- 208V, 240V, or 480V only; must specify voltage.
- 277V only.
- 120V, 208V and 277V only, must specify voltage.

- Only one lens-mounted accessory per fixture. See page 2 for ACCESSORIES.
- Only one lens-mounted accessory per fixture. See page 2 for ACCESSORIES.

# WP1 LED Medium Shallow-Back Wall Pack

## FOOTCANDLE ESTIMATOR & DISTRIBUTION



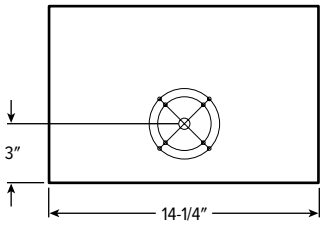
Footcandle calculations based on standard building reflectance of .10 with a ground reflectance of .0 and a light loss factor of .90.

Fixture installed at 12' mounting height.

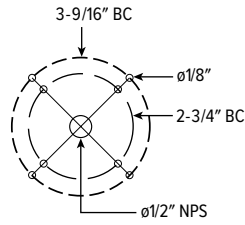
- Efficacy: 94 lm/w
- Flux: 4544 lm
- CRI: 84
- CCT: 5278
- BUG Ratings: B1-U4-G3

## MOUNTING DETAILS

### BACKVIEW

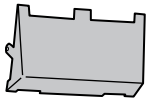


### WALL MOUNT BOLT CIRCLE PATTERN



## ACCESSORIES

### PVS



### WG

