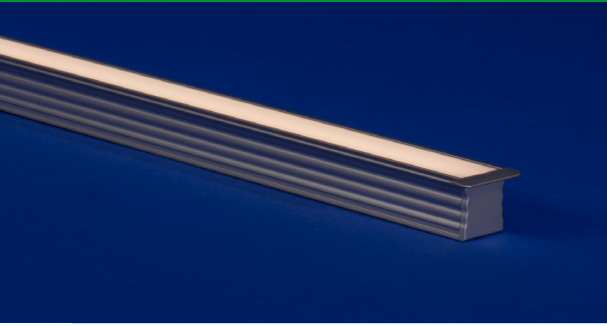


FLUR-FLAT (01) Linear Fixtures



Options that create brilliance. Pair FLUR, Q-Tran's deepest flanged LED fixture with an optional mounting tray and a clear lens to create a 45°, 60°, or 80° cutoff.

- High-quality aluminum housings are available in satin and black finishes
- Compact and recessed fixture allows the light source to be invisible
- The flanged edges allow for recessed installation while having refined style with a clean and discreet appearance
- Available in Static White, Static White High Efficacy, Static White High Efficacy Plus, Static White Individually Addressable, Warm Dim, Dynamic White, Dynamic White High Efficacy, Static Color, RGB, and RGBW High Efficacy
- Choose from clear, frosted, polar, and diffused lens options
- A fully assembled fixture that is suitable for installation in the storage area of a clothes closet when using 4.0W/ft or less

Part Number Builder

Static White 1-BIN 1-STEP NEC 410.2 and 410.16 Closet Rated in SW1.5-4.0 UL LISTED RHS COMPLIANT whiteoptics 5 YEAR WARRANTY

Product	W/FT	CCT	Rated	Efficiency	Lens	Input/Output	Connector/Wire In	Connector/Wire Out	Wire Color	Wire Type	Mounting	Finish	Length* (in)
FL1SW											SST		
Voltage: 24 VDC													
Typical lumens at 5.0W/ft with CL lens at 3000K: 309 lm/ft	1.5 3.0 4.0 5.0 6.0	20 22 24 27 30 35 40	DRY (IP20)	STD Standard WO WhiteOptics	CL/45 CL/60 CL/80 FR PR DF	S1 S2 Single (Closed exit)	BW BRL CON6 CON24	CLS	WH BK N/A	CL2 CL2P N/A	SST	ST BK	
	1.5 3.0 4.0 5.0	24 27 30 35 40	DMP (IP54)			P1 P2 Pass through	BW BRL CON6 CON24	BW BRL CON6 CON24					
	1.5 3.0 4.0 5.0	20 22 24 27 30 35 40	WET (IP67)										

*Available in 1" increments for 1.5W/ft - 5.0W/ft and 2" increments for 6.0W/ft. Maximum length of 98.43" not including end caps. Tolerance +0.0"/-0.5. Minimum fixture length 6".

Static White High Efficacy 1-BIN 1-STEP NEC 410.2 and 410.16 Closet Rated in 1.5HE-3.0HE UL LISTED RHS COMPLIANT whiteoptics 5 YEAR WARRANTY

Product	W/FT	CCT	Rated	Efficiency	Lens	Input/Output	Connector/Wire In	Connector/Wire Out	Wire Color	Wire Type	Mounting	Finish	Length* (in)
FL1SW											SST		
Voltage: 24 VDC													
Typical lumens at 6.0W/ft with CL lens at 3000K: 524 lm/ft	1.5HE 3.0HE 6.0HE 9.0HE	20 22 24 27 30 35 40	DRY (IP20)	STD Standard WO WhiteOptics	CL/45 CL/60 CL/80 FR PR DF	S1 S2 Single (Closed exit)	BW BRL CON6 CON24	CLS	WH BK N/A	CL2 CL2P N/A	SST	ST BK	
	1.5HE 3.0HE 6.0HE	24 27 30 35 40	DMP (IP54)			P1 P2 Pass through	BW BRL CON6 CON24	BW BRL CON6 CON24					

*Available in 2" increments, maximum length of 98.43" not including end caps. Tolerance +0.0"/-0.5. Minimum fixture length 6".

- If selecting **BRL**, select N/A for wire color and type
- **BW** comes in standard 24"- request custom length (Max 120") by writing it in inches next to "BW" in the order code box (ex. BW48)
- **Connector/Wire In or Out** not needed to specify product. Standard configuration is Type S1, Connector/Wire In: BW & Connector/Wire Out: CLS
- Specify **CL2P** for plenum rated wire
- **One Step, One Bin** based on 5W/ft

- 5 year warranty
- Field modifications void warranty
- Data subject to change, all data has +/- 5% tolerance
- Compatible for use with Q-Tran power supplies
- Suitable for installation in the storage area of a clothes closet when specified with LEDs at 4.0 watts or less per foot

FLUR-FLAT (01) Linear Fixtures



Static White High Efficacy Plus

Product	W/FT	CCT	Rated	Efficiency	Lens	Input/ Output	Connector/ Wire In	Connector/ Wire Out	Wire Color	Wire Type	Mounting	Finish	Length* (in)
FL1SW			DRY								SST		
Voltage: 24 VDC	3.0HE+ 6.0HE+	27 30 35 40	DRY (IP20)	STD Standard WO WhiteOptics	CL/45 CL/60 CL/80 FR PR DF	S1 S2	BW BRL CON6 CON24	CLS	WH BK	CL2 CL2P	SST	ST BK	Max continuous length: 3.0W - 196" 6.0W - 118"
Typical lumens at 6.0W/ft with CL lens at 3000K: 738 lm/ft						Single (Closed exit)							*Available in 2" increments, maximum length of 98.43" not including end caps. Tolerance +0.0"/-0.5. Minimum fixture length 6".
						Pass through	BW BRL CON6 CON24	BW BRL CON6 CON24					

Static White Individually Addressable

Product	W/FT	CCT	Rated	Efficiency	Lens	Input/ Output	Connector/ Wire In	Connector/ Wire Out	Wire Color	Wire Type	Mounting	Finish	Length* (in)
FL1IA	5.0		DRY								SST		
Voltage: 24 VDC	5.0	27 30 35 40	DRY (IP20)	STD Standard WO WhiteOptics	CL/45 CL/60 CL/80 FR PR DF	S1 S2	BW CON6 CON24	CLS	WH BK	CL2 CL2P	SST	ST BK	Max continuous length: 3.0W - 196" 6.0W - 118"
						Single (Closed exit)							*Available in 4" increments, maximum length of 98.43" not including end caps. Tolerance +0.0"/-0.5. Minimum fixture length 6".
						Pass through	BW CON6 CON24	BW CON6 CON24					

Warm Dim

Product	W/FT	CCT	Rated	Efficiency	Lens	Input/ Output	Connector/ Wire In	Connector/ Wire Out	Wire Color	Wire Type	Mounting	Finish	Length* (in)
FL1WD	6.0		DRY								SST		
Voltage: 24 VDC	6.0	19/27 19/30	DRY (IP20)	STD Standard WO WhiteOptics	CL/45 CL/60 CL/80 FR PR DF	S1 S2	BW BRL CON6 CON24	CLS	WH BK N/A	CL2 CL2P N/A	SST	ST BK	Max continuous length: 3.0W - 196" 6.0W - 118"
						Single (Closed exit)							*Available in 2" increments, maximum length of 98.43" not including end caps. Tolerance +0.0"/-0.5. Minimum fixture length 6".
						Pass through	BW BRL CON6 CON24	BW BRL CON6 CON24					

- If selecting **BRL**, select N/A for wire color and type
- **BW** comes in standard 24" - request custom length (Max 120") by writing it in inches next to "BW" in the order code box (ex. BW48)
- **Connector/Wire In or Out** not needed to specify product. Standard configuration is Type S1, Connector/Wire In: BW & Connector/Wire Out: CLS
- Specify **CL2P** for plenum rated wire

- 5 year warranty
- Field modifications void warranty
- Data subject to change, all data has +/- 5% tolerance
- Compatible for use with Q-Tran power supplies
- Suitable for installation in the storage area of a clothes closet when specified with LEDs at 4.0 watts or less per foot

FLUR-FLAT (01) Linear Fixtures



Dynamic White



Product	W/FT	CCT	Rated	Efficiency	Lens	Input/Output	Connector/Wire In	Connector/Wire Out	Wire Color	Wire Type	Mounting	Finish	Length* (in)
FL1DW	6.0										SST		
Voltage: 24 VDC													
Typical lumens at 6.0W/ft with CL lens at 3000K: 177 lm/ft	6.0	20/27 20/30	DRY (IP20)	STD Standard WO WhiteOptics	CL/45 CL/60 CL/80 FR PR DF	S1 S2	BW CON6 CON24	CLS	WH BK	CL2 CL2P	SST	ST BK	
		24/30	DMP (IP54)			P1 P2	BW CON6 CON24	BW CON6 CON24					

Single (Closed exit)
Pass through

*Available in 2" increments, maximum length of 98.43" not including end caps. Tolerance +0.0"/-0.5. Minimum fixture length 6".

Dynamic White High Efficacy



Product	W/FT	CCT	Rated	Efficiency	Lens	Input/Output	Connector/Wire In	Connector/Wire Out	Wire Color	Wire Type	Mounting	Finish	Length* (in)
FL1DW											SST		
Voltage: 24 VDC													
Typical lumens at 5.0W/ft with CL lens at 3000K: 191 lm/ft	3.0HE 5.0HE 8.0HE	20/27 20/30 27/40 27/55	DRY (IP20)	STD Standard WO WhiteOptics	CL/45 CL/60 CL/80 FR PR DF	S1 S2	BW CON6 CON24	CLS	WH BK	CL2 CL2P	SST	ST BK	
	3.0HE 5.0HE	24/30 27/40	DMP (IP54)			P1 P2	BW CON6 CON24	BW CON6 CON24					

Single (Closed exit)
Pass through

*Available in 2" increments, maximum length of 98.43" not including end caps. Tolerance +0.0"/-0.5. Minimum fixture length 6".

Static Color



Product	W/FT	CCT	Rated	Efficiency	Lens	Input/Output	Connector/Wire In	Connector/Wire Out	Wire Color	Wire Type	Mounting	Finish	Length* (in)
FL1SC	5.0										SST		
Voltage: 24 VDC													
Typical lumens at 5.0W/ft with CL lens in green: 383 lm/ft	5.0	GR BL RD AB	DRY (IP20)	STD Standard WO WhiteOptics	CL/45 CL/60 CL/80 FR PR DF	S1 S2	BW BRL CON6 CON24	CLS	WH BK N/A	CL2 CL2P N/A	SST	ST BK	
			DMP (IP54)			P1 P2	BW BRL CON6 CON24	BW BRL CON6 CON24					
			WET (IP67)										

Single (Closed exit)
Pass through

*Available in 2" increments, maximum length of 98.43" not including end caps. Tolerance +0.0"/-0.5. Minimum fixture length 6".

- If selecting **BRL**, select N/A for wire color and type
- **BW** comes in standard 24"- request custom length (Max 120") by writing it in inches next to "BW" in the order code box (ex. BW48)
- **Connector/Wire In or Out** not needed to specify product. Standard configuration is Type S1, Connector/Wire In: BW & Connector/Wire Out: CLS
- Specify **CL2P** for plenum rated wire

- 5 year warranty
- Field modifications void warranty
- Data subject to change, all data has +/- 5% tolerance
- Compatible for use with Q-Tran power supplies
- Florida Fish and Wildlife Conservation Commission (FWC) rated Strips: DRY and WET rated, Red and Amber
- Suitable for installation in the storage area of a clothes closet when specified with LEDs at 4.0 watts or less per foot

FLUR-FLAT (01) Linear Fixtures



RGB **5 YEAR WARRANTY**

Product	W/FT	CCT	Rated	Efficiency	Lens	Input/ Output	Connector/ Wire In	Connector/ Wire Out	Wire Color	Wire Type	Mounting	Finish	Length* (in)
FL1RGB	6.0	RGB									SST		
Voltage: 24 VDC	6.0	RGB	DRY (IP20)	STD Standard WO WhiteOptics	CL/45 CL/60 CL/80 FR PR DF	S1 S2	BW CON6 CON24	CLS	WH BK	CL2 CL2P	SST	ST BK	
Typical lumens at 6.0W/ft with CL lens in green: 137 lm/ft			DMP (IP54)			Single (Closed exit) P1 P2	BW CON6 CON24	BW CON6 CON24					

Pass through

*Available in 2" increments, maximum length of 98.43" not including end caps. Tolerance +0.0"/-0.5. Minimum fixture length 6".

RGBW High Efficacy **5 YEAR WARRANTY**

Product	W/FT	CCT	Rated	Efficiency	Lens	Input/ Output	Connector/ Wire In	Connector/ Wire Out	Wire Color	Wire Type	Mounting	Finish	Length* (in)
FL1RGBW											SST		
Voltage: 24 VDC	4.0HE 8.0HE	27 30 35 40	DRY (IP20)	STD Standard WO WhiteOptics	CL/45 CL/60 CL/80 FR PR DF	S1 S2	BW CON6 CON24	CLS	WH BK	CL2 CL2P	SST	ST BK	
Typical lumens at 4.0W/ft with CL lens at 3000K: 64 lm/ft	4.0HE		DMP (IP54)			Single (Closed exit) P1 P2	BW CON6 CON24	BW CON6 CON24					

Pass through

*Available in 2" increments, maximum length of 98.43" not including end caps. Tolerance +0.0"/-0.5. Minimum fixture length 6".

- **BW** comes in standard 24"- request custom length (Max 120") by writing it in inches next to "BW" in the order code box (ex. BW48)
- **Connector/Wire In or Out** not needed to specify product. Standard configuration is Type S1, Connector/Wire In: BW & Connector/Wire Out: CLS
- Specify **CL2P** for plenum rated wire

- 5 year warranty
- Field modifications void warranty
- Data subject to change, all data has +/- 5% tolerance
- Compatible for use with Q-Tran power supplies

FLUR-FLAT (01) Linear Fixtures



Technical Information

Static White

[Calculated L70 = 30000 hrs]
Tested with FL1SW-**-30-DRY-STD

	1.5W/FT	3.0W/FT	4.0W/FT	5.0W/FT	6.0W/FT
	LM/FT	LM/FT	LM/FT	LM/FT	LM/FT
CL	117	204	254	309	358
FR	114	198	246	300	347
PR	93	162	201	245	284
DF	77	135	168	204	237

Tested with FL1SW-**-30-DRY-WO

	1.5W/FT	3.0W/FT	4.0W/FT	5.0W/FT	6.0W/FT
	LM/FT	LM/FT	LM/FT	LM/FT	LM/FT
CL	181	315	392	477	552
FR	189	330	410	499	579
PR	201	351	436	531	615
DF	201	351	436	531	615

Dynamic White

[Calculated L70 = 70000 hrs]
Tested with FL1DW-6.0**-DRY-STD

	3000K
	LM/FT
CL	177
FR	172
PR	141
DF	117

Tested with FL1DW-6.0**-DRY-WO

	3000K
	LM/FT
CL	274
FR	287
PR	305
DF	305

RGB

[Calculated L70 = 55000 hrs]
Tested with FL1RGB-6.0-RGB-DRY-STD

	Red	Green	Blue
	LM/FT	LM/FT	LM/FT
CL	68	137	39
FR	66	133	38
PR	54	109	31
DF	45	91	26

Tested with FL1RGB-6.0-RGB-DRY-WO

	Red	Green	Blue
	LM/FT	LM/FT	LM/FT
CL	105	212	60
FR	110	222	63
PR	117	236	67
DF	117	236	67

Static White High Efficacy

[Calculated L70 = 70000 hrs]
Tested with FL1SW-**-30-DRY-STD

	1.5HEW/FT	3.0HEW/FT	6.0HEW/FT	9.0HEW/FT
	LM/FT	LM/FT	LM/FT	LM/FT
CL	151	277	524	788
FR	147	269	509	765
PR	120	220	416	626
DF	100	183	347	522

Tested with FL1SW-**-30-DRY-WO

	1.5HEW/FT	3.0HEW/FT	6.0HEW/FT	9.0HEW/FT
	LM/FT	LM/FT	LM/FT	LM/FT
CL	233	427	810	1217
FR	244	448	848	1275
PR	260	476	902	1356
DF	260	476	902	1356

Dynamic White High Efficacy

[Calculated L70 = 70000 hrs]
Tested with FL1DW-**-30-DRY-STD

	3.0W/FT	5.0W/FT	8.0W/FT
	LM/FT	LM/FT	LM/FT
CL	121	191	297
FR	117	185	288
PR	96	152	236
DF	80	126	197

Tested with FL1DW-6.0**-DRY-WO

	3.0W/FT	5.0W/FT	8.0W/FT
	LM/FT	LM/FT	LM/FT
CL	187	295	459
FR	196	309	481
PR	208	329	511
DF	208	329	511

RGBW High Efficacy

[Calculated L70 = 70000 hrs]
Tested with FL1RGBW-4.0HE-30-DRY-STD

	Red	Green	Blue	3000K
	LM/FT	LM/FT	LM/FT	LM/FT
CL	27	104	22	64
FR	26	101	22	62
PR	22	83	18	51
DF	18	69	15	42

Tested with FL1RGBW-8.0HE-30-DRY-WO

	Red	Green	Blue	3000K
	LM/FT	LM/FT	LM/FT	LM/FT
CL	42	161	35	99
FR	44	168	36	103
PR	47	179	39	110
DF	47	179	39	110

Static White High Efficacy Plus

[Calculated L70 = 50000 hrs]
Tested with FL1SW-**-30-DRY-STD

	3.0HE+W/FT	6.0HE+W/FT
	LM/FT	LM/FT
CL	399	738
FR	387	716
PR	317	586
DF	264	488

Tested with FL1SW-**-30-DRY-WO

	3.0HE+W/FT	6.0HE+W/FT
	LM/FT	LM/FT
CL	616	1139
FR	646	1194
PR	687	1269
DF	687	1269

Static Color

[Calculated L70 = 30000 hrs]
Tested with FL1SC-5.0**-DRY-STD

	Red	Green	Blue	Amber
	LM/FT	LM/FT	LM/FT	LM/FT
CL	71	383	99	64
FR	69	372	96	62
PR	56	304	79	51
DF	47	253	66	42

Tested with FL1SC-5.0**-DRY-WO

	Red	Green	Blue	Amber
	LM/FT	LM/FT	LM/FT	LM/FT
CL	109	591	153	99
FR	114	619	161	103
PR	122	659	171	110
DF	122	659	171	110

Temperature Ratings

Dependent on LED Strip W/FT

Light Engine (LED Strip)	W/FT	Minimum Limit (°F)	Maximum Limit (°F)
Static White	1.5	-40	138
	3.0	-40	124
	4.0	-40	115
	5.0	-40	108
Static White High-Efficacy	1.5HE	-40	152
	3.0HE	-40	140
	6.0HE	-40	118

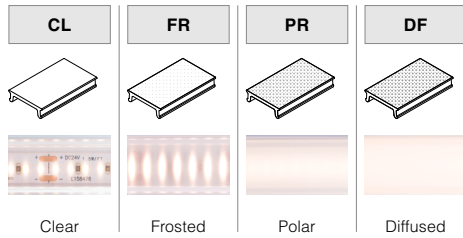
FLUR-FLAT (01)

Linear Fixtures



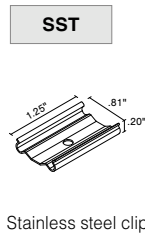
Lens

with LED visibility



Mounting

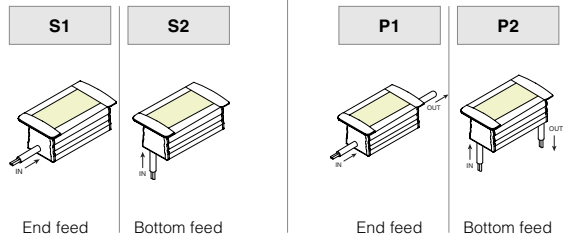
2 clips provided for 4' or less; 4 clips provided for greater than 4'



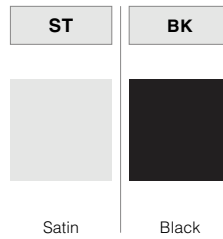
Type

SINGLE (Input only)

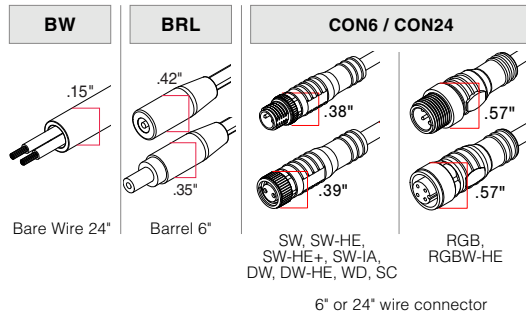
PASS THROUGH (Input/Output)



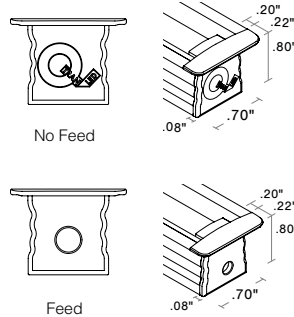
Finish



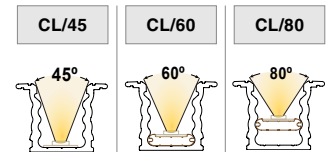
Connector/Wire – In/Out



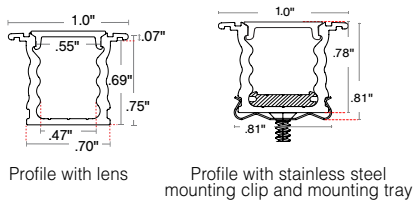
End Caps



Cut Off



Dimensions



Length (in)

Add to nominal LED length for fixture length

