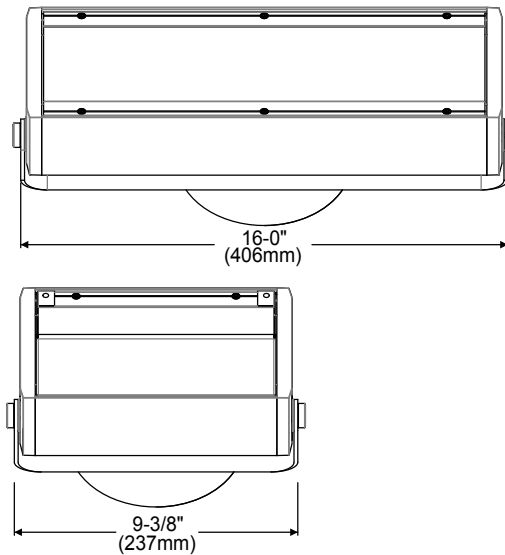
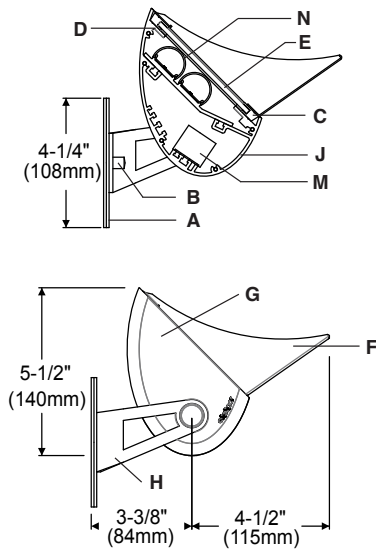
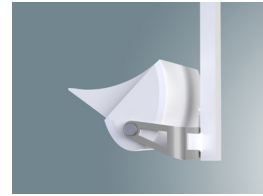


E Mount 1:8 Scale

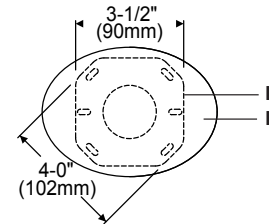


X Mount



Mounting Plate

1:4 Scale



Specifications

- | | | | |
|---------------------------------------|--|--|---|
| A Aluminum canopy | E Micro-prismatic tempered glass lens | J Extruded aluminum heat sink/housing | M Integral constant current driver |
| B Chrome cap nuts | F Aluminum cutoff visor | K Mounting Plate | N Field serviceable light engine with asymmetric optic |
| C Extruded aluminum door frame | G Die-cast end plates | L Recessed outlet box (by others) | |
| D Silicone gaskets | H Aluminum yoke | | |

Features

- The classic **elliptipar** look using advanced LED optics
- Die-cast end plates join at articulated black reveals; machined aluminum knobs – no exposed fasteners
- All joints are gasketed – keep dirt and moisture out, prevent light leaks, maintain performance
- Non-corrosive aluminum and stainless steel construction



Optic Assembly:

Two-piece extruded aluminum heat sink housing and light engine. Exterior heat sink anodized for maximum emissivity. Precision extruded polymer refractive lens with optimized asymmetric distribution. Light engine may be removed for service or upgrade. Clear Tempered microprismatic glass lens. Stainless steel hardware.

Finish:

Painted surfaces – 6 stage pretreatment and electrostatically applied thermoset polyester powder coating for a durable abrasion, fade and corrosion resistant finish.

Extruded aluminum heat sink/housing, canopy, yoke, door frame and decorative end plates are finished in semigloss white. All luminaire hardware – stainless steel. All mounting hardware – zinc or cadmium plated.

Mounting:

Canopy mounts over recessed outlet box.

Cantilever mounting assembly utilizes required mounting

hanger (see pg. SC3.1) ordered and priced separately; specify **X** mount.

Fixture weight: 8"=4.5 lbs (2.0 kg), 16"=9 lbs (4.1kg).

Electrical:

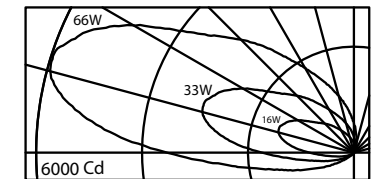
Integral electronic HPF constant current driver. Leads exit housing through silicone coated fiberglass sleeving, enter canopy through strain relief for supply connections in recessed outlet box (by others). 60" (1.5m) leads provided for **X** mount. For complete driver specifications, see website, reference document [MA-1303](#).

Standard:

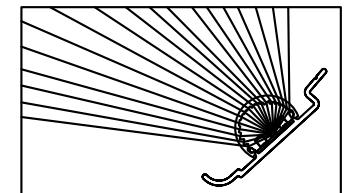
UL listed or CSA certified for dry locations, consult factory for damp location rating. 5 year warranty, maximum ambient temperature 45°C (113°F).

Performance

Precisely extruded acrylic lens produces an asymmetric distribution ideal for illuminating surfaces evenly.



L90(10k) > 60,000 hrs. @ 25°C per TM-21



For LM79 and photometric reports, visit thelightingquotient.com



To form a Catalog Number

S 1 2 0 - - - - - V - - - - -

1 2 3 4 5 6 7 8 9 10

Project: _____ Type: _____

1 Source

S = Solid state (LED)

2 Style

120 = Small surface, integral driver

3 Length / Light Output / Power

ORDER CODE	LENGTH	LUMENS	INPUT WATTS	NUMBER OF LEDS	DRIVE CURRENT
L28S	9"	925	8	28	175mA
M28S	9"	1789	16	28	350mA
L28D	9"	1586	16	56	175mA
M28D	9"	3068	32	56	350mA
L56S	16"	1849	16	56	175mA
M56S	16"	3578	32	56	350mA
L56D	16"	3172	32	112	175mA
M56D	16"	6136	64	112	350mA

S = Single Row of LEDs, D = Dual Row of LEDs
Based on 3500K/80+CRI. [Click here](#) for scaled performance table.

4 Mounting

E = External yoke on canopy
X = External yoke for use with cantilever or pendant mounting assembly (required VCS mounting hanger ordered and priced separately)

5 Finish

02 = Semigloss white 13 = Matte Black* 22 = Matte White*
06 = Dark bronze* 15 = Metallic* PL = Platinum*
07 = Silver* 17 = Champagne* 99 = Custom or RAL, consult rep.*
08 = Semigloss black 18 = Copper*

02	22*	PL*	07*	15*
08	13*	06*	18*	17*

* = non-cancellable/returnable

6 Voltage

M = 120-277V Universal voltage input

7 Option

V0 = Cutoff visor included, no other options
VP = Natatorium (pool) with visor

8 Destination Requirement

0 = UL listed or CSA certified for U.S.
J = UL listed or CSA certified for Canada

9 Color Temperature / CRI

827 = 2700K, 80+ CRI 927 = 2700K, 90+ CRI
830 = 3000K, 80+ CRI 930 = 3000K, 90+ CRI
835 = 3500K, 80+ CRI 935 = 3500K, 90+ CRI
840 = 4000K, 80+ CRI 940 = 4000K, 90+ CRI

Note: Additional CCT and CRI options are available; consult factory.

RGBW - Consult factory.



10 Dimming**

00 = Non-dimming
TD = ERP forward phase or reverse phase (120V only), dimming range 100-10% power, compatible controls by others
ZX = 0-10V analog dimming 120-277V input, dimming range 100%-1%, 0-10V controls by others

Remote Driver

EL = eldoLED SOLOdrive 120-277V input, dimming range 100%-0.1%, 0-10V controls by others
ED = eldoLED SOLOdrive 120-277V input, dimming range 100%-0.1%, DALI controls by others
L2 = Lutron Hi-lume LTE 120V input only, dimming range 100%-1%, compatible 2-wire dimming controls by others (see note*)

**Dimming range refers to % power input, % light output will vary.

Refer to Driver Information document [MA-1303](#)

Example

S120-M056-E-06-M-00-0-830-TD

Small Indoor LED, extruded aluminum heat sink/housing, yoke, door frame and decorative end plates finished dark bronze. Integral 120-277V 700mA dimming driver compatible Triac/ELV or 0-10V dimming controls by others, UL listed or CSA certified for U.S., wet locations. 3000K/80+ CRI.

Required Mounting Hanger

Required mounting hangers for X mount fixtures are ordered and priced separately. See installation sheets on website.

VCS, VPL or VPE required for mounting option X:

VCS 30 = Cantilever, 30" (760mm) setback

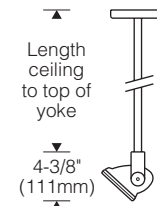
0 = U.S.
J = Canada



VP = Wallwash pendant

0 = U.S.
J = Canada
Length in inches (54" (1.4m) maximum)

L = Straight
E = Swivel (up to 45°)

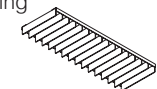


Accessories

Order separately. See Accessories Section for specifications.

AEGV 000 = External vertical blade baffle, black for lengthwise shielding

2 = 25° shielding
4 = 45°



The external shapes of the housings are trademarks of Sylvan R. Shemitz Designs, LLC dba The Lighting Quotient, makers of elliptipar, tambient and fraqtir.

Certain products illustrated may be covered by applicable patents and patents pending. These specifications supersede all prior publications and are subject to change without notice. Copyright © 2021 Sylvan R. Shemitz Designs, LLC, all rights reserved.

