

USM-21121-LAT

Smith Lattice Light Column



66w LED
1371 Lumens

45w LED
934 Lumens

IP55
Suitable for wet locations

IK08
Impact Resistant [Vandal Resistant]

Weight 75 lbs

Construction

Aluminum

Less than 0.1% copper content – Marine Grade 6060 extruded & LM6 Aluminum High Pressure die casting provides excellent mechanical strength, clean detailed product lines and excellent heat dissipation.

Pre paint

8 step degrease and phosphate process that includes deoxidizing and etching as well as a zinc and nickel phosphate process before product painting.

Memory Retentive -Silicon Gasket

Provided with special injection molded “fit for purpose” long life high temperature memory retentive silicon gaskets. Maintains the gaskets exact profile and seal over years of use and compression.

Thermal management

LM6 Aluminum is used for its excellent mechanical strength and thermal dissipation properties in low and high ambient temperatures. The superior thermal heat sink design by Ligman used in conjunction with the driver, controls thermals below critical temperature range to ensure maximum luminous flux output, as well as providing long LED service life and ensuring less than 10% lumen depreciation at 50,000 hours.

Surge Suppression

Standard 10kv surge suppressor provided with all fixtures.

BUG Rating

Contact Factory

Finishing

All Ligman products go through an extensive finishing process that includes fettling to improve paint adherence.

Paint

UV Stabilized 4.9Mil thick powder coat paint and baked at 200 Deg C. This process ensures that Ligman products can withstand harsh environments. Rated for use in natatoriums.

Hardware

Provided Hardware is Marine grade 316 Stainless steel.

Anti Seize Screw Holes

Tapped holes are infused with a special anti seize compound designed to prevent seizure of threaded connections, due to electrolysis from heat, corrosive atmospheres and moisture.

High Impact Acrylic Lens

Manufactured with Ultra High Impact, Naturally UV Stabilized Injection Molded Acrylic.

Optics & LED

Precise optic design provides exceptional light control and precise distribution of light. LED CRI > 80

Lumen - Maintenance Life

L80 /B10 at 50,000 hours (This means that at least 90% of the LED still achieve 80% of their original flux)

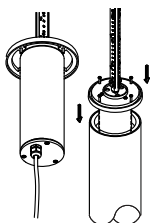
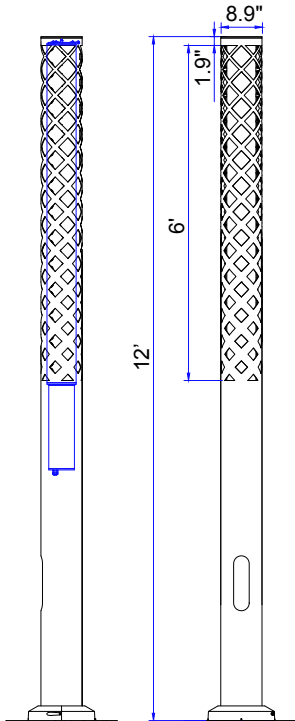
Straight and clean round column. Smooth lines complimented with a smooth lighting effect from the opal vertical diffuser.

Smith is an elegant sturdy light column that is suitable for both modern and classic architecture. Ideal for creating visual guidance with exceptional visual comfort. A sleek and minimalist shape provides distinctive lighting effects by night and decorative urban effect during the day. Suitable for pedestrian precincts, building surrounds, shopping centers, squares and parks. The luminaire is provided with a ultra high impact UV stabilized acrylic lens that provides excellent low glare vertical and illumination.

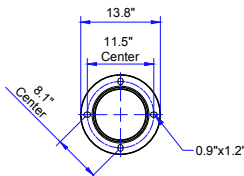
The Smith Column comes standard with a unique waterproof internal driver housing compartment that is situated at the top of the pole to stop water and dust from entering the electrical components. This fixture is supplied completely wired with powercord and waterproof gland from the driver enclosure to the handhole to ensure quick trouble-free installation. Custom pole heights are available, please specify

The flush mounted curve profile handhole cover is gasketed and is supplied with a specially designed camlock vandal resistant securing mechanism. The high pressure die-cast aluminum base with small side reveal to hide the stainless steel vandal resistant screws, provide a rugged yet aesthetic finish to the base of the luminaire. Fixture is provided with anchor bolts and laser cut steel anchor bolt template. Color temperature 2700K, 3000K, 3500K and 4000K.

Custom wattages can be provided to suit customer requirements. (Specify total watts per fixture) This product is provided complete with anchor bolts and laser cut steel bolt template.



Standard Internal Waterproof Driver Housing



Mounting Detail



RGBW
RGBW Column

USM-21121-LAT

Smith Lattice Light Column

PROJECT		DATE	
----------------	--	-------------	--

QUANTITY		TYPE		NOTE	
-----------------	--	-------------	--	-------------	--

ORDERING EXAMPLE || USM - 21121-LAT - 45w - W30 - 02 - 120/277v - Options

USM-21121-LAT	LAMP	LED COLOR	FINISH COLOR	VOLTAGE
	66w LED 1371 Lumens	W27 - 2700K W30 - 3000K W35 - 3500K W40 - 4000K	01 - BLACK RAL 9011 02 - DARK GREY RAL 7043 03 - WHITE RAL 9003 04 - METALLIC SILVER RAL 9006 05 - MATTE SILVER RAL 9006 06 - LIGMAN BRONZE 07 - CUSTOM RAL	120/277v Other - Specify

--	--	--

ADDITIONAL OPTIONS

- NAT - Natatorium Rated
- DIM - 0-10v Dimming
- RGBW - RGBW Column
- GFCI - GFCI Box
- HGT - Custom Height (Specify)



Smith Product Family

