

Type: \_\_\_\_\_ Model: \_\_\_\_\_

Project: \_\_\_\_\_



# EPIC

## LED Wall Mount



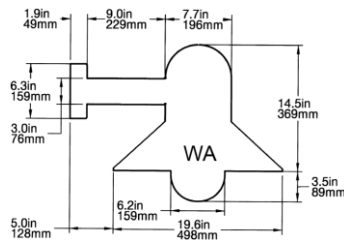
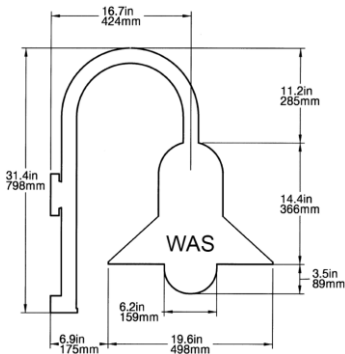
shown with shepherds crook wall mount



Dome Top



Cone Top  
(WA style only)



**General:** The classic contemporary style of the Epic blends well into a variety of architectural styles, both past and present. Appropriate for pedestrian scale installations, the varied mounting and top options provide an aesthetic appeal.

**Construction:** Top, housing, and mounting gear are constructed of low copper content cast aluminum. Shade shall be spun aluminum. Stainless steel external hardware to protect against the exterior elements.

**Lens:** Glass globe available in opal (-OL) or clear (-CL).

**Tops:** Two top styles available: Cone (straight arm only) and Dome.

**LED Light Engine:** LED module located in upper housing with LED module offering 37 nominal input watts. Available in color temperatures of 3000K, 3500K, 4000K, and 5000K. Minimum CRI = 80.

**Driver:** Constant current LED driver; input voltage of 120v to 277v, mounted internal to fixture.

**Heat Sink:** Finned heat sink shall be extruded aluminum and shall be located in housing above LED module.

**Mounting:** Two wall mount styles available: straight arm and shepherds crook.

**Finish:** Textured polyester powder coat finish. Shade underside is standard white finish. Black, bronze, grey, white, silver, and verde green options available. For custom colors, please consult factory.

**Gaskets:** EPDM gaskets standard.

**Weight:** WA 28 lbs  
WA 27 lbs



**Listings:** ETL Listed to UL 8750. IESNA LM79.



Type: \_\_\_\_\_ Model: \_\_\_\_\_

Project: \_\_\_\_\_



SERIES      MOUNTING      WATTAGE      CCT (kelvin)      TOP STYLE      LENS      VOLTAGE      FINISH

## FIXTURE DETAIL

**SERIES**       **EC**      Epic Wall Mount

**MOUNTING**       **WA**      Straight Arm Wall Mount  
 **WAS**      Wall Arm Shepherds Crook Mount

**WATTAGE**       **37LED**      37 input watts

Nominal Watts	Nominal Lumens	Lumens/Watt (LPW)	CCT (Kelvin)	CRI	Rated Life (L85)	Drive Current (mA)	Nominal Voltage
	3,700	100	3000				
37	3,750	101	3500	> 80	50,000 hrs	700mA	48.0
	3,750	101	4000				
	3,800	103	5000				

**COLOR (kelvin)**       **30K**      3000K  
 **35K**      3500K  
 **40K**      4000K  
 **50K**      5000K

**TOP STYLE**       **C**      Cone  
 **D**      Dome

**LENS**       **CL**      Clear Glass Globe  
 **OL**      Opal/Translucent Glass Globe

**VOLTAGE**       **UNV**      120v – 277v; output current 700mA

**FINISH**       **BLK**      Black finish       **VGN**      Verde Green finish  
 **BRZ**      Bronze finish       **WHT**      White finish  
 **GRY**      Grey finish       **CC**      Custom Color – consult factory  
 **SIL**      Silver finish       **WGF**      Woodgrain finish – consult factory

IES files can be found on website.

Content of specification sheets is subject to change. Please consult website for current product detail.



www.intrigueled.com

N60 W14592 Kaul Avenue      Menomonee Falls, WI 53051  
P: (877) 965 0005      F: (262) 436 1745