

Type: \_\_\_\_\_ Model: \_\_\_\_\_

Project: \_\_\_\_\_



# SAGA STEP LIGHT

## Recessed Amber LED Step Light



Horizontal Directional Louver  
HDL



Angled Cutoff  
AC



Open Face  
OF



Vertical  
Directional  
Louder  
VDL

**General:** The Saga series step light is a recessed luminaire for low-level wall or step lighting for use in wet locations (indoor/outdoor).

**Housing:** Cast aluminum, low-copper content, housing. Knockouts provided on (4) sides; housing painted white. Lip around housing perimeter secures gasket.

**Frame:** Cast aluminum, painted, and secured to housing with stainless steel hardware. (4) face frame styles available: Angled Cutoff (-AC), Horizontal Directional Louver (-HDL), Open Face (-OF), or Vertical Directional Louver (-VDL).

**Diffuser:** Available in frosted glass or translucent polycarbonate (.10" minimum thickness). Retained in face plate and sealed with RTV silicone adhesive. *Angled Cutoff (AC) frame has secondary inner lens.*

**LED Board:** Single 7" linear LED module generating 450 lumens @ 12 watts.

**LED Driver:** Grounded Constant Current LED driver with output current of 1050mA. Minimum starting temperature of -40°C.

**Color Temperatures:** Available in 590nm (amber).

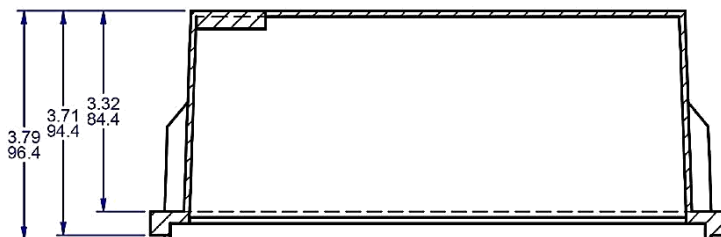
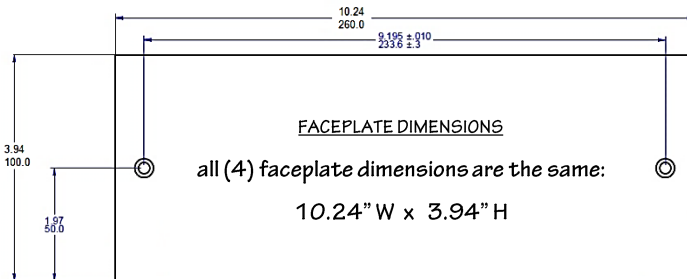
**Finish:** Textured polyester powder coat finish. Recessed housing and reflector white on all fixtures. Black, bronze, gray, white, silver, and verde green options available.

**Gaskets:** Rectangular silicone gasket provided and secured around housing perimeter.

**Mounting:** Available for poured concrete mounting, existing frame mounting, new construction mounting, and masonry mounting applications.

**Hardware:** External stainless steel hardware is standard. Tamper Resistant Hardware (TRH) option available.

**Listings:** UL Listed 1598 for Wet Locations; Suitable for mounting within 4' of ground. cUL Listed. ADA compliant.



FWC certification #: 2019-172  
SGH-LED-SR-R-1LED-AML-HDL



www.intrigueled.com

N60 W14592 Kaul Avenue Menomonee Falls, WI 53051  
P: (877) 965 0005 F: (262) 436 1745

Type: \_\_\_\_\_ Model: \_\_\_\_\_

Project: \_\_\_\_\_



HOUSING MOUNTING LAMP SERIES LAMP TYPE FACE FRAME LENS LED COLOR OPTIONS VOLTAGE FINISH

SGH - - LED SG-R - 1LED - - - - -

## FIXTURE DETAIL

**HOUSING** ☐ **SGH** SAGA series steplight housing / backbox with mounting hardware

**MOUNTING**

- ☐ **CON** Poured Concrete (new installation only)
- ☐ **MOR<sup>1</sup>** Mortar/Masonry (new installation only)
- ☐ **NC<sup>1</sup>** New Construction (excludes CON or MOR installations)
- ☐ **EC<sup>1</sup>** Existing Construction

<sup>1</sup> requires Trim Ring Accessory Kit (SGTR). See below for ordering details.

**LAMP** ☐ **LED** Light Emitting Diode (white LED – specified below)

**SERIES** ☐ **SG-R** SAGA Series Recessed Steplight

**LAMP TYPE** ☐ **1LED** LED module (constant current)

**FACE FRAME**

- ☐ **AC** Angled Cutoff
- ☐ **HDL** Horizontal Directional Louver
- ☐ **OF** Open Face
- ☐ **VDL** Vertical Directional Louver

**LENS**

- ☐ **OLG** Glass – Opal Lens
- ☐ **OLP** Polycarbonate – Opal Lens

**LED COLOR** ☐ **AML** Amber LED (590nm)

**OPTIONS** ☐ **TRH** Tamper Resistant Hardware

**VOLTAGE**

- ☐ **120** 120 Volt
- ☐ **277** 277 Volt

**FINISH**

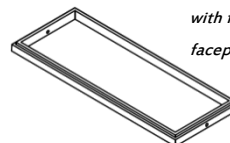
- ☐ **BLK** Black
- ☐ **BRZ** Bronze
- ☐ **GRY** Grey
- ☐ **SIL** Silver
- ☐ **VGN** Verde Green
- ☐ **WHT** White
- ☐ **CC** Custom Color – consult factory

Model No.	SG-R-1LED-HDL-AML
Color	Amber
Outline Dimension	L7"XW1.3875"XT0.06"
If(mA)	700mA
Vf(V)	11-17V
Power(W)	12W
Lumen	450lm †

### TRIM RING ACCESSORY

<sup>1</sup> required for –MOR, –NC, and –EC housings

☐ **SGTR** Trim Ring Kit  
with finish to match  
faceplate selection



Content of specification sheets is subject to change. Please consult website for current product detail.

www.intrigueled.com

N60 W14592 Kaul Avenue Menomonee Falls, WI 53051

P: (877) 965 0005

F: (262) 436 1745



## Florida Fish and Wildlife Conservation Commission

### Commissioners

**Bo Rivard**  
Chairman  
Panama City

**Robert A. Spottswood**  
Vice Chairman  
Key West

**Joshua Kellam**  
Palm Beach Gardens

**Gary Lester**  
Oxford

**Gary Nicklaus**  
Jupiter

**Sonya Rood**  
St. Augustine

**Michael W. Sole**  
Tequesta

### Executive Staff

**Eric Sutton**  
Executive Director

**Thomas H. Eason, Ph.D.**  
Assistant Executive Director

**Jennifer Fitzwater**  
Chief of Staff

### Division of Habitat and Species Conservation

**Kipp Frohlich**  
Interim Director

(850) 488-3831  
(850) 921-7793 FAX

*Managing fish and wildlife  
resources for their long-term  
well-being and the benefit  
of people.*

620 South Meridian Street  
Tallahassee, Florida  
32399-1600  
Voice: 850-488-4676

Hearing/speech-impaired:  
800-955-8771 (T)  
800 955-8770 (V)

MyFWC.com

7/10/2019

Todd Manderfield  
Intrigue Lighting  
N60 W14592 Kaul Avenue,  
Menomonee Falls, WI 53051

RE: Wildlife Lighting Certificate

Thank you for the opportunity to review your products through the Wildlife Lighting Certification Program. We received and tested the submitted CHARISMA Wall Mount and received the submitted Allure Bollard, Turtle Bollard, and Saga Recessed Step Light for recertification. We are pleased to report that your products met or exceeded all three criteria for Wildlife Lighting. The fixtures are downward directed with luminaires that produce a spectral output above 560 nm. These luminaires are recommended for use in areas where artificial lighting is needed adjacent to ecologically sensitive areas, sea turtle nesting beaches, migratory corridors, and Dark Sky Friendly communities.

Per the FWC sea turtle lighting guidelines, we will state the following: bollards must have a maximum mounting height of 42", must have 180° to 270° beachside shields, and must be installed facing away from the beach; step lights must be downward directed with a maximum mounting height of 24 inches for the ground floor only or a maximum mounting height of 12 inches for any floor above the ground floor; wall mounts must be downward directed with a maximum mounting height of 8 feet from the floor. These are not recommended for use above the first habitable floor when located on the shore perpendicular or beachside of a structure. Additional shielding may be necessary if directly or indirectly visible from the beach.

The above referenced products, CHARISMA Wall Mount (Certification #2019-169), Allure Bollard (Certification #2019-170), Turtle Bollard (Certification #2019-171), and Saga Recessed Step Light (Certification #2019-172) are approved when installed correctly and used to meet minimal lighting standards. This certification authorizes the use of the Official Wildlife Lighting logo device only with the specified fixtures and lamps. In order to keep pace with current research and to constantly improve our wildlife lighting website, we have added an expiration date for wildlife certified products. This is to ensure that if FWC changes the wildlife lighting certification requirements because of new information, then certified products will need to meet or exceed these changes once the certificate expires. Wildlife lighting certified products will be valid for 2 years from the date of issuance.

The Wildlife Lighting Program was developed by the Department of the Interior's U.S. Fish and Wildlife Service and the Florida Fish and Wildlife Conservation Commission to address light pollution issues in ecologically sensitive areas while ensuring human safety and security.

If I can be of further assistance in any way, please contact me at (850) 922-4330 or email me directly at [Rachael.Stevenson@MyFWC.com](mailto:Rachael.Stevenson@MyFWC.com). I look forward to working together.

Sincerely,

*Rachael Stevenson*



Rachael Stevenson, Fisheries and Wildlife Biological Scientist III  
Imperiled Species Management Section

cc: Ann Marie Lauristen, USFWS

Lucas Davis, FWC