

CHB-P™ High Power

Circular High Bay

DESCRIPTION

The CHB-P™ High Power LED SERIES circular high bay is a cold-forged highly durable construction. It is a high lumen output and efficient LED fixture that provides a robust solution for high ceiling applications. CHB-P™ High Power delivers the highest lumen output performance and quality illumination. It improves warehouse and manufacturing facilities safety and productivity, lower maintenance cost, and reducing operating costs.



APPLICATIONS

Commercial, Retail, Institution, Warehouse, High Ceiling Gymnasium and Industrial facility

FEATURES

Construction

Rugged, cold-forged 1070 grade aluminum housing with advanced thermal management system ensures reliability and durability.
IK10: Protected against mechanical impact of 20 joule.
Available in Black and White Finish.

Optical System

Tempered glass lens provides a 120° beam angle.
Optional PC Optics available in 45° or 90°.
Optional 70° PC Reflector or 90° Aluminum Reflectors available.

Warranty

5 Year Warranty.
Optional 7/10 Year Warranty Available.
See warranty documentation for more information.



Cold Forged Aluminum Heatsink



Not all products are qualified on the DLC® QPL. To view our DLC® qualified products, please consult the DLC® Qualified Products List at www.designlights.org/qpl.



CHB-P™ HP
400W (54,000 lm)
500W (67,500 lm)

Electrical

Input voltage: 100-277VAC or 240-480VAC (Optional).
10kV surge protector included & 20kV surge protector (Optional).
Emergency battery backup (480V only) option available (Factory Installed).
6ft [14/3, SOW (600V)/16/3, SJOW 300V]] rated power cables included.

Installation/ Mounting

Hanging Mount (Standard), Surface Mount Kit, and Pendant Mount Kit (3/4") [Stem not included]

Controls/Dimming

1-10V Dimming comes standard.
Bi-level occupancy/Daylight harvesting sensor option available.

Projected L70: 100,000+ hours
Warranty: 5 Years
System Efficacy: 135 LpW
1-10V Dimming



IP65



IK10



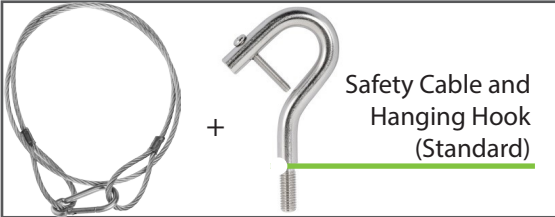
1-10V Dimming



Motion Sensor (IP65) Option



480V Option



Safety Cable and Hanging Hook (Standard)

Ordering Information

EXAMPLE: CHB-P-500W-50K-WD-U-D-B-HM

| Series | Wattage | CCT | Beam Angle | Input Voltage | Dimming | Finish | Mounting Options | Control Options | Emergency Battery |
|---|--------------|----------------------------|------------|----------------------------------|-------------------|-------------------------|---|--|---|
| CHB-P | 400W 500W | 40K - 4000K 50K - 5000K | WD - 120° | U - 100-277VAC H - 240-480VAC | D - 1-10V Dimming | B - Black *W - White | HM - Hanging Mount (Standard) PM - 3/4" Stem Pendant Mount Kit SM - Surface Mount Kit | M - Bi-level Occupancy/Daylight Harvesting Sensor (IP65) | EM - Emergency Battery Backup (480V Only) |
| Accessories | | | | | | | Distibution Options | | |
| CHB-P-HP-WG-B (Black Wire Guard) CHB-P-HP-WG-W (White Wire Guard) L7-15 (NEMA Twist Lock Plug [120-277V, 15Amp]) L7-20 (NEMA Twist Lock Plug [120-277V, 20Amp]) CHB-P-HP-SP (20kV Surge Protector) SAFETY-SS-10FT (10' Safety Cable) | | | | | | | CHB-P-HP-AM (Alum. 90° Reflector) CHB-P-HP-PN-22 (PC 70° Reflector) CHB-P-HP-LC (PC Reflector Lens Cover) *CHB-P-HP-MD (Medium Distribution - 90°) *CHB-P-HP-ND (Narrow Distribution - 45°) | | |

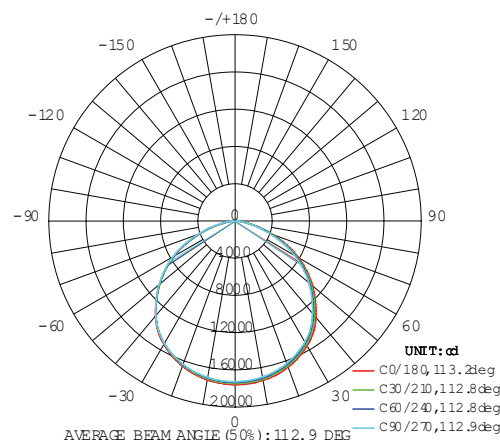
Performance Information

| | |
|------------------|-----------------------------------|
| Input Voltage | 100-277VAC, 240-480VAC (Optional) |
| Input Frequency | 50/60Hz |
| Wattage | See Performance Table |
| Delivered Lumens | See Performance Table |
| Efficacy | See Performance Table |
| CRI | >80 |
| Available CCT | 4000K, 5000K |
| Projected L70 | 100,000+ hours |
| Power Factor | >0.9 |
| THD | <20% |
| Dimming | 1-10V |
| Operating Temp. | -40°~122°F |
| IP Rating | IP65 |

Photometric Data

* IESNA LM-63 IES Available

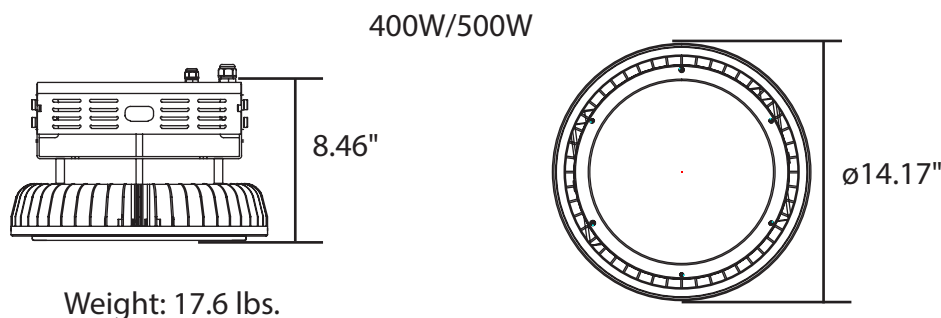
LUMINOUS INTENSITY DISTRIBUTION DIAGRAM



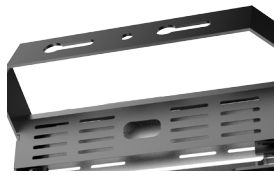
Performance Table

| SKU | Wattage (W) | 5000K | |
|----------------------------|-------------|-----------------------|-----------------|
| | | Delivered Lumens (lm) | Efficacy (lm/W) |
| CHB-P-400W-50K-WD-U-D-B-HM | 400 | 52000 | 129 |
| CHB-P-500W-50K-WD-U-D-B-HM | 500 | 66198 | 130 |

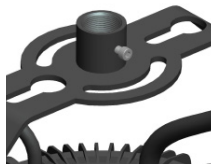
Product Dimensions



Accessories



Surface Mount Bracket
[SM]



3/4" Thread
Pendant Mount
(Stem Not Included)
[PM]



Occupancy Motion Sensor
(IP65)
[M]



Optical Lens Distribution
(Available in 90° or 45°)
[CHB-P-HP-MD or CHP-P-HP-ND]



Wire Guard
(Black or White Finish)
(Cannot be used with Reflectors)
[CHB-P-HP-WG-B, CHB-P-HP-WG-W]



Aluminum Reflectors
(Available in 90°)
[CHB-P-HP-AM]



PC Reflectors 22" Dia.
(Available in 70°)
[CHB-P-HP-PN-22]



PC Reflectors Lens Cover
[CHB-P-HP-LC]



NEMA Twist Lock Plug
[L7-15 or L7-20]



Emergency Battery
Backup Driver
(480V Only & Factory Installed)
[EM]



10' Safety Cable
(Optional)
[SAFETY-SS-10FT]

Control Pre-Commissioning

Default settings are indicated by *

| High-End Trim/ Tuning | Time Delay | Daylight Harvesting | Stand-by Light Level Setting | Stand-by Time Setting |
|---|--------------------------------|---|---------------------------------|------------------------------|
| 20% - 8' height (48' dia.) 50% - 20' height (40' dia.) 75% - 40' height (60' dia.) *100% - 40' height (100' dia) | 10s 1min *10min 15min | *Light sensor disabled 10lux 30lux 50lux | 0% *10% 30% 50% | ∞ 1min 30min *60min |

High-End Trim/Tuning:

Lighting electricity usage can be reduced by 30 percent or more through high-end trim, which sets the maximum light level for each space. High-end trim/tuning sets the appropriate target brightness for each space to the prefer light levels to minimize glare and increase comfort level.

Time Delay:

The light can be set to stay ON for any period of time between approx. 10sec and the maximum of 60 min. Any movement detected before this time elapses will re-start the timer.

Daylight Harvesting:

The chosen light response threshold can be infinitely from approx. 10-50lux.

Standby Light Level:

How much light is dimmed when no motion is detected.

Stand-by Time:

How much time after dimming will the light will shut off. Up to 60 minutes after the light has dimmed the light will shut off.