

# L17

EXTERIOR | INTERIOR

Wall-mount | For walls, stairs, and walkways

- Wet, Damp, and Dry Location



## Ordering Information

Clear Form

Date : \_\_\_\_\_ Quantity : \_\_\_\_\_

Project : \_\_\_\_\_ Note : \_\_\_\_\_

Type : \_\_\_\_\_

## Specifications

Luminaire | Example Code: L17-2-W30H-N-W30H-N-V-S6

Product	Version	Uplight: CCT & CRI <sup>1</sup>	Uplight: Beam Angle	Downlight: CCT & CRI <sup>1</sup>	Downlight: Beam Angle	Plate	Mounting Kit <sup>2</sup> (optional)	Trim Finish
L17						V		S6
	1 1W x 2 2 2W x 2	W22S 2200K 80+ W27H 2700K 90+ W30H 3000K 90+ W35H 3500K 90+ W41H 4100K 90+	S spot 12° N narrow flood 30° W wide flood 120°	W22S 2200K 80+ W27H 2700K 90+ W30H 3000K 90+ W35H 3500K 90+ W41H 4100K 90+	S spot 12° N narrow flood 30° W wide flood 120°	V vertical	MK1 vertical surface	S6 stainless steel 316

### System Components (Ordered Separately)

Remote Driver : \_\_\_\_\_

\* Consult MP Lighting Website or Factory.

### Important Notes

#### Specification

- Refer to pg.2 - for Light quality and colour consistency details.
- Mounting kit is ordered separately (consult factory). Back box must also be purchased with MK1 kit.

#### Warranty Notes & Disclaimer

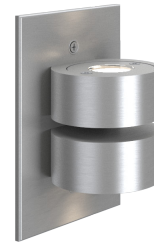
Malfunction and damage to product due to incompatible dimming system or misuse will not be covered under warranty. Consult MP Lighting for recommended drivers. If the fixture has an option to be installed with a dimming control system, consult a dimming system manufacturer with minimum load before installing. MP Lighting reserves the right, at its sole discretion, at any time and without notice, to make design changes to any of our products. Consult MP Lighting website for most updated documentation.

# L17

EXTERIOR | INTERIOR

Wall-mount | For walls, stairs, and walkways

- Wet, Damp, and Dry location



## Performance

Wattage	Forward Current	Power Consumption Budget per fixture (including driver)	LED output (Source)	Fixture Output (Delivered)
1W x 2	350mA	3W	220 lm	57-115 lm
2W x 2	700mA	6W	440 lm	123-183 lm

## Application

Environment	Wet / Damp / Dry Location approved. IP 66.
Mounting	Mounts to single gang box (ordered separately). Optimal mounting distance: 18"-24" (456mm-610mm) AFF. <b>Box opening: Width   2-3/8" (60.33mm) X Height   2" (50.8mm)</b> <b>MK1 mounting kit (optional):</b> Recommended for easy installation on vertical surfaces (e.g. stair risers, walls). See "Mounting Options & Dimensions," or visit <a href="#">MK1</a>

## Electrical

Power Supplies	Non-dimmable integral driver included (100-240V AC input). Compatible with remote driver for wet locations (not included).
Control	<b>On/off control</b> <b>Dimming (consult factory):</b> ELV or 0-10V dimming with appropriate drivers <b>Other options (consult factory):</b> TRIAC/MLV, DMX, DALI, Casambi, Power over Ethernet

## Luminaire Construction

LED Light Source	<b>W22S</b> = CCT: 2200K, CRI (Ra): 80+, Colour Consistency: 3SDCM <b>W27H</b> = CCT: 2700K, CRI (Ra): 90+, Colour Consistency: 2SDCM <b>W30H</b> = CCT: 3000K, CRI (Ra): 90+, Colour Consistency: 2SDCM <b>W35H</b> = CCT: 3500K, CRI (Ra): 90+, Colour Consistency: 2SDCM <b>W41H</b> = CCT: 4100K, CRI (Ra): 90+, Colour Consistency: 3SDCM
Standard Compliance	✓ADA-compliant ✓WELL standard – Feature 58: Color Quality ✓B.U.G – 0/3/0
Weight	3.06lbs (1.39kg)
Material	<b>Fixture:</b> Stainless steel (316)
Supplied with	<b>Standard installation housing:</b> Comes with LED unit with gasket, cross countersunk screws, tefon screw gaskets, and waterproof wire nuts. <b>Driver:</b> Non-dimmable integral driver included.
Warranty & LED Life	5 years limited warranty Estimated useful life of LED is 50,000 hours.

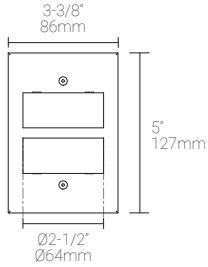
## Ordered Separately

System Components	<b>Power supplies:</b> alternate remote driver for dimming options Please consult factory or visit <a href="#">Recommended Drivers</a> for available driver options. <b>Mounting kit:</b> MK1 & Back box <b>Custom rectangular back boxes:</b> see Pg.3- Mounting Options & Dimensions.
-------------------	--

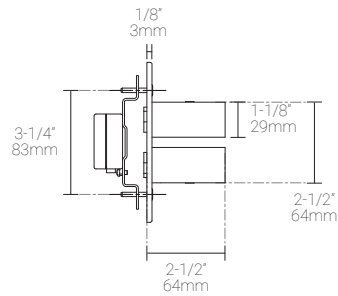
## Mounting Options & Dimensions

### LED Insert Dimensions

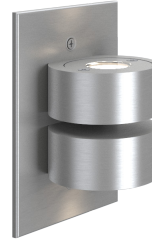
Fixture



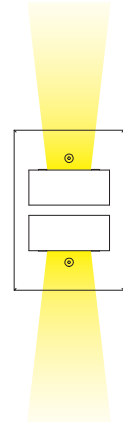
Side View



3D View



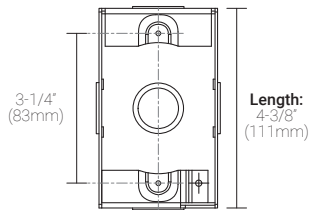
Beam



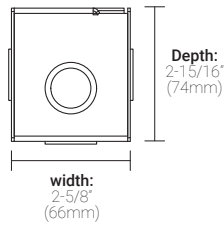
## Custom Rectangular Back Boxes

### MP Lighting Single Gang Back Box | Order Code: EBX-SGB1

Top View

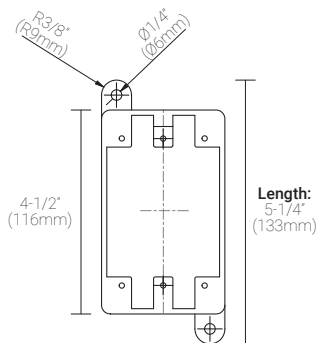


Side View

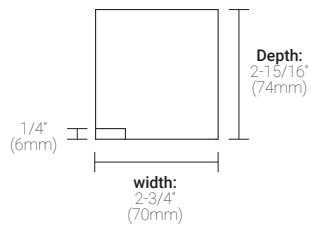


### Scepter FD Back box | Order Code: EBX-SFD

Top View

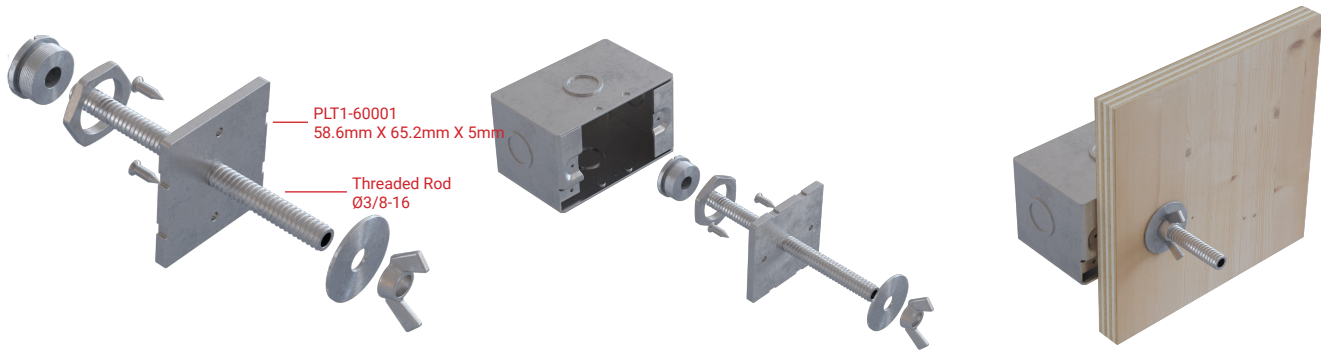


Side View



MK1 | For walls and stairs

Mounting Kit Exploding Views \* Back box not included



MK1-SGB1

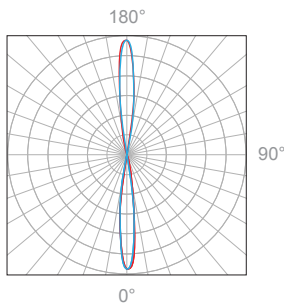
MK1-SGB1 shown with EBX-SGB1

MK1-SGB1 shown with EBX-SGB1 and Plywood Form

Photometric | 1W, 3000K, 90+ CRI

Polar Candela Distribution

Beam Width: 12°



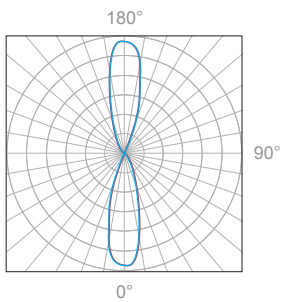
Illuminance at a Distance

Distance		Center Beam fc	Beam Width			
3.0ft	0.91m	31.4fc	1.0ft	0.30m	1.0ft	0.30m
6.0ft	1.83m	7.8fc	2.1ft	0.64m	2.1ft	0.64m
9.0ft	2.74m	3.5fc	3.1ft	0.95m	3.1ft	0.95m
12.0ft	3.66m	2.0fc	4.2ft	1.28m	4.2ft	1.28m
15.0ft	4.57m	1.3fc	5.2ft	1.58m	5.2ft	1.58m
18.0ft	5.49m	0.9fc	6.3ft	1.92m	6.3ft	1.92m

Delivered Lumen: 116.7lm  
 ■ Vertical Beam Spread: 19.4°  
 ■ Horizontal Beam Spread: 18.9°

Polar Candela Distribution

Beam Width: 30°



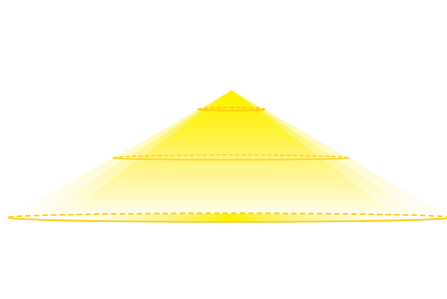
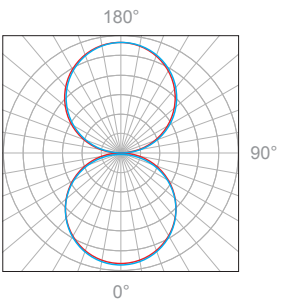
Illuminance at a Distance

Distance		Center Beam fc	Beam Width			
3.0ft	0.91m	19.56fc	1.4ft	0.43m	1.4ft	0.43m
6.0ft	1.83m	4.89fc	2.9ft	0.88m	2.9ft	0.88m
9.0ft	2.74m	2.17fc	4.3ft	1.31m	4.3ft	1.31m
12.0ft	3.66m	1.22fc	5.8ft	1.77m	5.8ft	1.77m
15.0ft	4.57m	0.78fc	7.2ft	2.19m	7.2ft	2.19m
18.0ft	5.49m	0.54fc	8.7ft	2.65m	8.7ft	2.65m

Delivered Lumen: 115.4lm  
 ■ Vertical Beam Spread: 27.1°  
 ■ Horizontal Beam Spread: 27.8°

Polar Candela Distribution

Beam Width: 120°

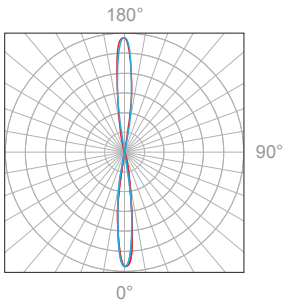


Illuminance at a Distance

Distance		Center Beam fc	Beam Width			
3.0ft	0.91m	1.58fc	4.3ft	1.31m	4.3ft	1.31m
6.0ft	1.83m	0.40fc	9.2ft	2.80m	9.2ft	2.80m
9.0ft	2.74m	0.18fc	13.7ft	4.18m	13.7ft	4.18m
12.0ft	3.66m	0.10fc	18.3ft	5.58m	18.3ft	5.58m
15.0ft	4.57m	0.06fc	22.9ft	6.98m	22.9ft	6.98m
18.0ft	5.49m	0.04fc	27.5ft	8.38m	27.5ft	8.38m

Delivered Lumen: 56.6lm  
 ■ Vertical Beam Spread : 72.6°  
 ■ Horizontal Beam Spread : 75°

**Polar Candela Distribution**



**Beam Width: 12°**

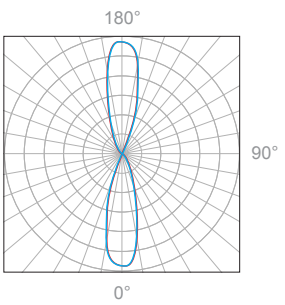


**Illuminance at a Distance**

Distance		Center Beam fc	Beam Width			
3.0ft	0.91m	50.1fc	1.0ft	0.30m	1.0ft	0.30m
6.0ft	1.83m	12.5fc	2.1ft	0.64m	2.1ft	0.64m
9.0ft	2.74m	5.6fc	3.1ft	0.95m	3.1ft	0.95m
12.0ft	3.66m	3.1fc	4.2ft	1.28m	4.2ft	1.28m
15.0ft	4.57m	2.0fc	5.2ft	1.58m	5.2ft	1.58m
18.0ft	5.49m	1.4fc	6.3ft	1.92m	6.3ft	1.92m

**Delivered Lumen: 186lm**  
 ■ Vertical Beam Spread: 19.4°  
 ■ Horizontal Beam Spread: 19.0°

**Polar Candela Distribution**



**Beam Width: 30°**

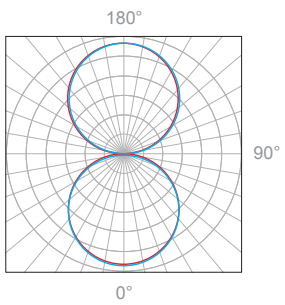


**Illuminance at a Distance**

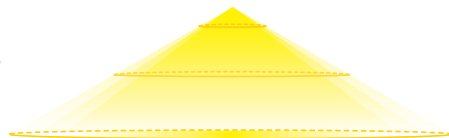
Distance		Center Beam fc	Beam Width			
3.0ft	0.91m	32.3fc	1.7ft	0.52m	1.7ft	0.52m
6.0ft	1.83m	8.1fc	3.4ft	1.04m	3.4ft	1.04m
9.0ft	2.74m	3.6fc	5.1ft	1.55m	5.1ft	1.55m
12.0ft	3.66m	2.0fc	6.9ft	2.10m	6.9ft	2.10m
15.0ft	4.57m	1.3fc	8.6ft	2.62m	8.6ft	2.62m
18.0ft	5.49m	0.9fc	10.3ft	3.14m	10.3ft	3.14m

**Delivered Lumen: 184.6lm**  
 ■ Vertical Beam Spread: 27.5°  
 ■ Horizontal Beam Spread: 27.8°

**Polar Candela Distribution**



**Beam Width: 120°**



**Illuminance at a Distance**

Distance		Center Beam fc	Beam Width			
3.0ft	0.91m	3.40fc	4.6ft	1.40m	4.3ft	1.31m
6.0ft	1.83m	0.85fc	9.1ft	2.77m	8.5ft	2.59m
9.0ft	2.74m	0.38fc	13.7ft	4.18m	12.8ft	3.90m
12.0ft	3.66m	0.21fc	18.2ft	5.55m	17.1ft	5.21m
15.0ft	4.57m	0.14fc	22.8ft	6.95m	21.4ft	6.52m
18.0ft	5.49m	0.09fc	27.4ft	8.35m	25.6ft	7.80m

**Delivered Lumen: 123.2lm**  
 ■ Vertical Beam Spread : 74.2°  
 ■ Horizontal Beam Spread : 77°