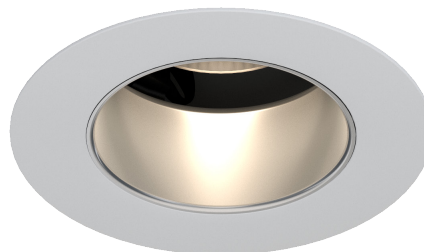


L402

EXTERIOR | INTERIOR

Adjustable Recessed Downlight

○ Damp and Dry location



Ordering Information

Clear Form

Date :

Quantity :

Project :

Note :

Type :

Specifications

Luminaire | Example Code: L402-13-D-W30V-S-B-B-BK

Product	Wattage	Dimming	CCT & CRI ¹	Beam Angle	Reflector Colour	Baffle Colour	Trim Finish
L402	13						
	13 13W	Integral Driver: D 0~10V dimming T Triac dimming LU Lutron dimming Remote Driver: M DMX L DALI Non-dimmable: ND non-dimmable	Standard LED Module: W27H 2700K 90+ W30H 3000K 90+ W35H 3500K 90+ W27V 2700K 97+ W30V 3000K 97+ Custom LED Module: Warm Dim: WD 1800K-3000K 95+ SORAA: SOR27 2700K 95+ SOR30 3000K 95+ Xicato Artist: X27 2700K 95+ X30 3000K 95+ X35 3500K 95+ Daylight Spectrum: DAY 3000K 97+ Lumenetix: L 1650K-4000K 90+	S spot 15° N narrow flood 30°	S silver reflector B black reflector	S silver baffle B black baffle	WH white powder coat BK black powder coat

System Components (Ordered Separately)

Remote Driver :

* Consult MP Lighting Website or Factory.

Important Notes

Specifications

1. For custom LED module option, lead time might vary. Please consult factory to specify this option and confirm the specific lead time.

Further information and images

For custom LED module option, lead time might vary. Please consult factory to specify this option and confirm the specific lead time. For images of different colour options, please refer to **Appendix**.

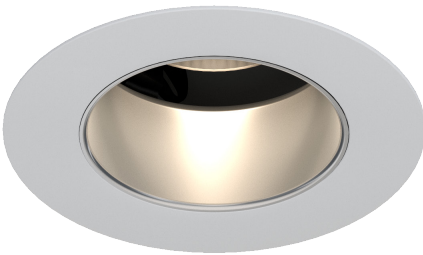
Warranty Notes & Disclaimer

Malfunction and damage to product due to incompatible dimming system or misuse will not be covered under warranty. Consult MP Lighting for recommended drivers. Only DC Drivers are recommended for dimming systems. If the fixture has an option to be installed with a dimming control system, consult a dimming system manufacturer with minimum load before installing. MP Lighting reserves the right, at its sole discretion, at any time without notice, to make design changes to any of our products.

L402

EXTERIOR | INTERIOR
Adjustable Recessed Downlight

Damp and Dry location



Performance

LED Module	Wattage	Forward Current	Power Consumption Budget per fixture (including driver)	LED output (Source)	Fixture Output (Delivered)
Standard	13W	350mA	16W	1430 lm	590~1030 lm
Xicato Artist	8W	350mA	16W	1430 lm	530~594 lm
SORAA	10W	350mA	16W	1430 lm	500~515 lm
Daylight Spectrum	13W	350mA	16W	1430 lm	750 lm
Lumenetix	12W	500mA	15W	480 lm	480 lm
Warm Dim	13W	350mA	16W	1430 lm	806 lm

Application

Environment	Dry / Damp Location approved. IP 42.
Field Customization	Field replaceable LED Zhaga module
Mounting	Non-insulated type frame in kit with hanger bars to mount to joist. Ceiling cut out 4”(102mm) aperture.

Electrical

Electrical	Integral Driver: 120V AC (Triac, 0-10V, or Lutron), 277V AC (0-10V) Remote Driver: 120V AC or 277V AC (DMX or DALI) Remote Emergency Driver/inverter options available, please consult factory for more information.
------------	--

Luminaire Construction

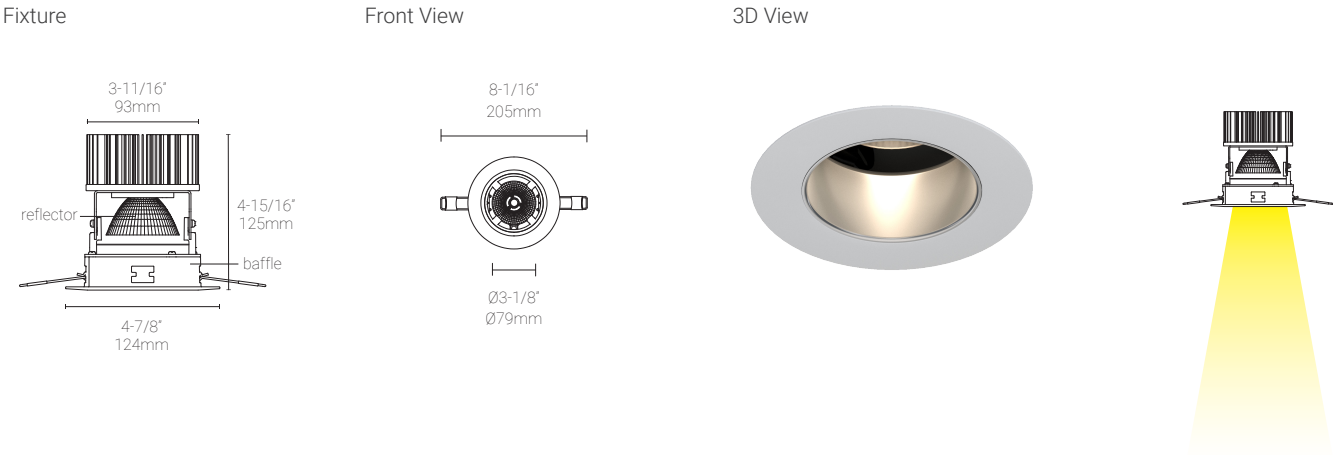
Weight	1.4 lbs (638 g).
Material	Fixture: aluminum
Supplied with	Non-insulated housing
Warranty & LED Life	5 years limited warranty Estimated useful life of LED is 50,000 hours.

Ordered Separately

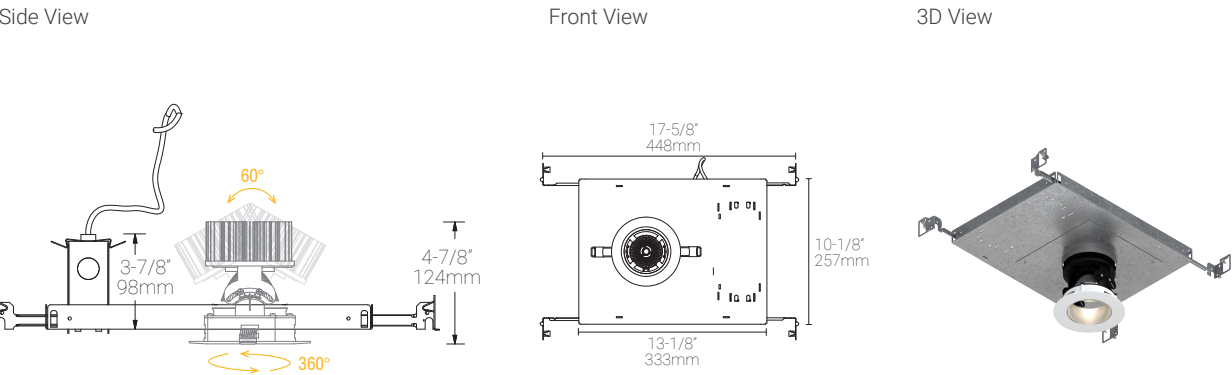
System Components	Power supplies: remote driver
-------------------	--------------------------------------

Mounting Options & Dimensions

LED Insert Dimensions

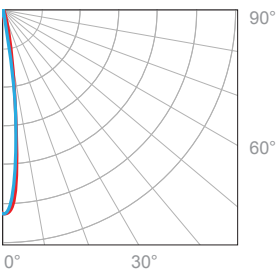


Non-Insulated Housing



Standard LED Module | 13W, 3000K, 90+ CRI | Silver Reflector and Silver Baffle

Polar Candela Distribution



Beam Width: 15°

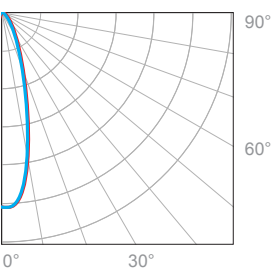


Illuminance at a Distance

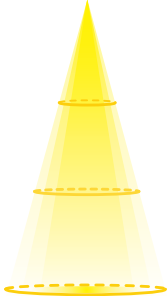
Distance		Center Beam fc	Beam Width			
3.0ft	0.91m	328fc	0.9ft	0.27m	0.9ft	0.27m
6.0ft	1.83m	85fc	1.8ft	0.54m	1.8ft	0.54m
9.0ft	2.74m	38fc	2.7ft	0.82m	2.7ft	0.82m
12ft	3.66m	22fc	3.6ft	1.09m	3.6ft	1.09m
15ft	4.57m	14fc	4.4ft	1.34m	4.5ft	1.37m
18ft	5.49m	10fc	5.3ft	1.61m	5.4ft	1.64m

■ Vertical Beam Spread: 16.9°
■ Horizontal Beam Spread: 17°

Polar Candela Distribution



Beam Width: 30°



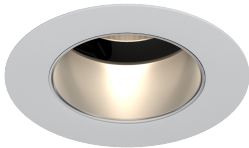
Illuminance at a Distance

Distance		Center Beam fc	Beam Width			
3.0ft	0.91m	229fc	1.7ft	0.52m	1.7ft	0.52m
6.0ft	1.83m	57fc	3.5ft	1.07m	3.5ft	1.07m
9.0ft	2.74m	25fc	5.2ft	1.58m	5.2ft	1.58m
12ft	3.66m	15fc	7.0ft	2.13m	6.9ft	2.10m
15ft	4.57m	10fc	8.7ft	2.65m	8.6ft	2.62m
18ft	5.49m	7.2fc	10.5ft	3.20m	10.4ft	3.17m

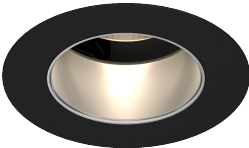
■ Vertical Beam Spread: 32.0°
■ Horizontal Beam Spread: 32.4°

Appendix

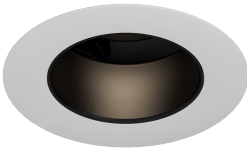
Aluminum Finishes



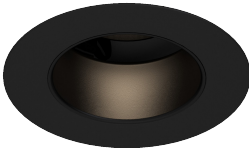
WH white trim with silver specular



BK black trim with silver specular



WH white trim with black specular



BK black trim with black specular

Halogen Dim (Warm Dim)

Warm Dim VS. Halogen

