

L770

EXTERIOR | INTERIOR

Trimless Steplight | For walls, stairs, and walkways.

- Wet, Damp, and Dry location



Ordering Information

Clear Form

Date : _____

Quantity : _____

Project : _____

Note : _____

Type : _____

Specifications

Luminaire | Example Code: L770-6-W30H-WH

Product	Version	CCT & CRI ¹	Finish ²
L770			
	3 3W	W22S 2200K 80+	Aluminum Finishes: MA matte clear anodized BK black powder coated WH white powder coated BZ bronze powder coated
	6 6W	W27H 2700K 90+	
		W30H 3000K 90+	
		W35H 3500K 90+	
		W41H 4100K 90+	

System Components (Ordered Separately)

Remote Driver : _____

* Consult factory for the alternative option of using remote driver.

Important Notes

Specifications

- Refer to pg.02 - for Colour Consistency details.
- Refer to Appendix or MP Lighting website for complete look of luminaire with different finish options.

Warranty Notes & Disclaimer

Malfunction and damage to product due to incompatible dimming system or misuse will not be covered under warranty. Consult MP Lighting for recommended drivers. If the fixture has an option to be installed with a dimming control system, consult a dimming system manufacturer with minimum load before installing. MP Lighting reserves the right, at its sole discretion, at any time and without notice, to make design changes to any of our products. Consult MP Lighting website for most updated documentation.

L770

EXTERIOR | INTERIOR

Trimless Steplight | For walls, stairs, and walkways.

- Wet, Damp, and Dry location



Performance

Wattage	Forward Current	Power Consumption Budget per fixture (including driver)	LED output (Source)	Fixture Output (Delivered)
3W	350mA	4W	330 lm	29 lm
6W	700mA	8W	660 lm	53 lm

Application

Environment	Dry / Damp / Wet Location approved. IP 66.
Mounting	Recessed mount to MP Lighting Single Gang Box (EBX-SGB1 , included). Box dimension: Length 4-3/8" (111mm) X Width 2-5/8" (66mm) X Height (depth) 2-5/16" (74mm)

Electrical

Power Supplies	Integral LED drivers (120V AC input, Non-dimmable) Consult factory for Integral LED drivers (120-277V AC input, ELV / 0-10V dimmable) or alternative driver options and remote driver options.
Control	On/off control Dimming: ELV or 0-10V dimming with appropriate drivers Other options (consult factory): TRIAC/MLV, DMX, DALI, Casambi, Power over Ethernet

Luminaire Construction

LED Light Source	W22S = CCT: 2200K, CRI (Ra): 80+, Colour Consistency: 3SDCM W27H = CCT: 2700K, CRI (Ra): 90+, Colour Consistency: 2SDCM W30H = CCT: 3000K, CRI (Ra): 90+, Colour Consistency: 2SDCM W35H = CCT: 3500K, CRI (Ra): 90+, Colour Consistency: 3SDCM (Contact factory for 2SDCM option) W41H = CCT: 4100K, CRI (Ra): 90+, Colour Consistency: 3SDCM
Weight	1.5lbs (0.68kg)
Material	Fixture: machined marine-grade aluminum with polycarbonate lens
Supplied with	Installation: Back box and mounting kit: mounting bracket, mounting screws x 2, mounting plage, foam/tape, threaded rod, washer, and nut Driver: Non-dimmable integral driver and single gang box.
Warranty & LED Life	5 years limited warranty Estimated useful life of LED is 50,000 hours.

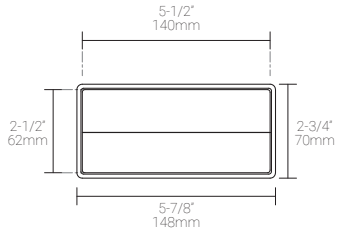
Ordered Separately

System Components	Power supplies: alternate remote driver for dimming options Please consult factory or visit Recommended Drivers for available driver options.
-------------------	---

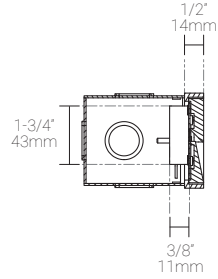
Mounting Options & Dimensions

LED Insert Dimensions

Fixture



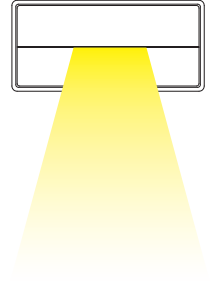
Side View



3D View



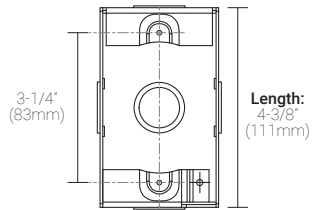
Beam



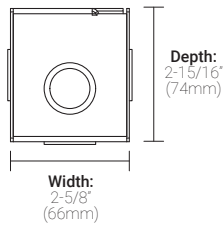
Back Box Dimensions

MP Lighting Single Gang Back Box | Order Code: EBX-SGB1

Top View

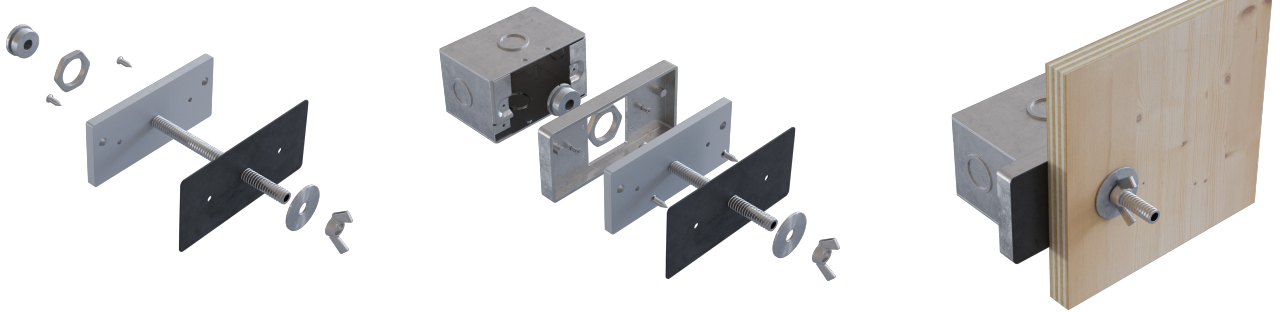


Side View



MK1 | For walls and stairs

Mounting Kit Exploding Views



MK1-L770

MK1-L770 shown with EBX-SGB1

MK1-L770 shown with EBX-SGB1 and Plywood Form

Wall-mount Plywood Form Installation (shown with L770)

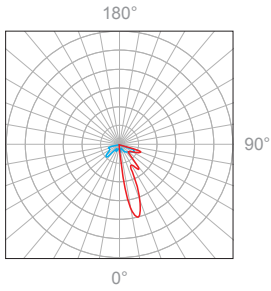


Stairs Plywood Form Installation (shown with L770)

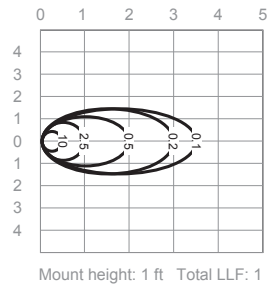


3W, 3000K, 90+ CRI

Polar Candela Distribution



Isofootcandle Plot



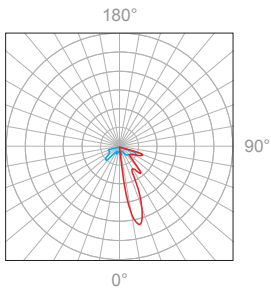
Illuminance at a Distance

Distance		Center Beam fc
0.5ft	0.15m	10fc
1.0ft	0.30m	2.5fc
2.0ft	0.61m	0.5fc
3.0ft	0.91m	0.2fc
3.5ft	1.07m	0.1fc

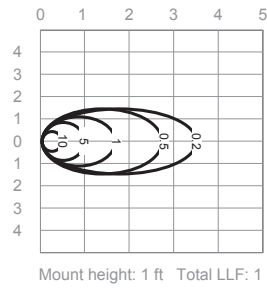
Delivered Lumen: 30.1lm
 ■ Vertical Beam Spread: 83.1°
 ■ Horizontal Beam Spread: 16.7°

6W, 3000K, 90+ CRI

Polar Candela Distribution



Isofootcandle Plot



Illuminance at a Distance

Distance		Center Beam fc
0.5ft	0.15m	10fc
1.0ft	0.30m	5fc
1.6ft	0.49m	1fc
2.6ft	0.79m	0.5fc
3.5ft	1.07m	0.2fc

Delivered Lumen: 59.5lm
 ■ Vertical Beam Spread: 83.1°
 ■ Horizontal Beam Spread: 16.7°

Appendix

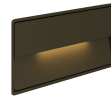
Aluminum Finishes



MA matte clear anodized



BK black powder coated



BZ bronze powder coated



WH white powder coated