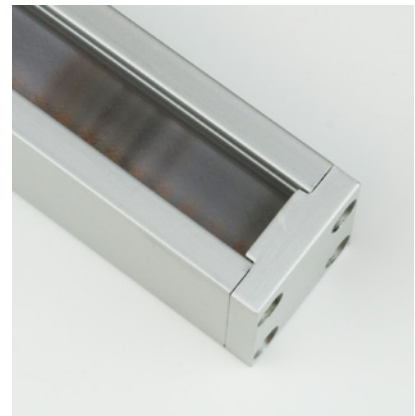


Linear

# MoMo A040 (40W) Fixture Guide

# KKDC

Indoor/Outdoor | Surface | Max output up to 3960lm/m (1207lm/ft)

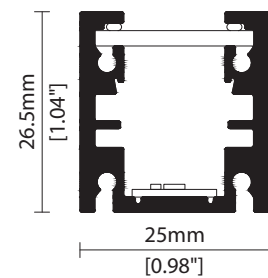


## Key applications

- ✓ Bathrooms
- ✓ Building façades
- ✓ Interior/Exterior
- ✓ Mirror back lighting
- ✓ Public spaces
- ✓ Retail display
- ✓ Under bench
- ✓ Wall grazing
- ✓ Window Reveal

## Key features

- ✓ Custom lengths
- ✓ Diffusion: Homogenous
- ✓ Direct view
- ✓ Extensive CCT range
- ✓ Form factor: Medium
- ✓ High lumen efficacy
- ✓ IP54
- ✓ IP67
- ✓ Output max



## MOUNTING METHODS



KKCP-03 Clip



KKCP-09 Lock clip



KKBK-07 Fixing plate



KKBK-21 Adjustable bracket

Linear

# MoMo A040 (40W)

## Specification sheet



<b>Dimension</b>	H26.5/W25/L97-1520mm* (H1.04/W0.98/L3.82-59.84in*) *Nano Louvre = 1020mm/40.16in Max
<b>PCB increment</b>	38.46mm increment/1500mm max (1.51in increment/59.06in max) *Nano Louvre = 1000mm/39.37in Max
<b>LED pitch</b>	4.8mm - 208LED/m (0.19in - 64LED/ft)
<b>Chip</b>	<b>A-line</b>
<b>Beam angle</b>	100° (Clear)/23° (Clear+KKLN-03 Lens)/95° (Diffused)/35° (Diffused+Nano Louvre)
<b>Colours</b>	<b>A-line</b> 2700K/3000K/4000K
<b>Bin/Step</b>	<b>A-line</b> 3-step MacAdam ellipse
<b>CRI</b>	94
<b>Lifetime</b>	50,000 hours @ 25°C (50,000 hours @ 77°F)
<b>Operating temp</b>	T <sub>a</sub> = -20 to 50°C (T <sub>c</sub> max = 81.6°C) T <sub>a</sub> = -13 to 122°F (T <sub>c</sub> max = 179°F)
<b>IP rating</b>	IP54/IP67
<b>Finish</b>	Silver anodised
<b>Cover/lens</b>	Clear/Clear + 23° lens option (KKLN-03)/Diffused/Diffused + Nano Louvre
<b>Mounting</b>	Surface mounting via clips or brackets
<b>Power feed</b>	Sheathed hardwire tails or male/female connectors
<b>Control</b>	0-10V/1-10V/DMX/DALI



### LED Grading Key

**Exclusive Grade** \*KKDC tuned CCT range  
**A-line\*** 3-step CCT range  
 KKDC highest lumen efficacy LED

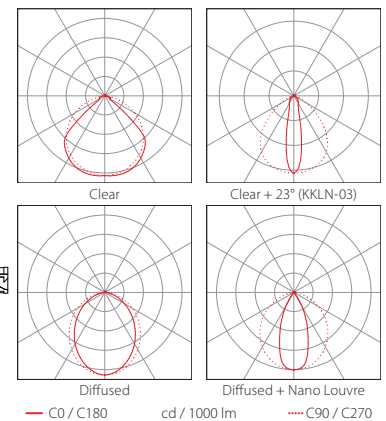
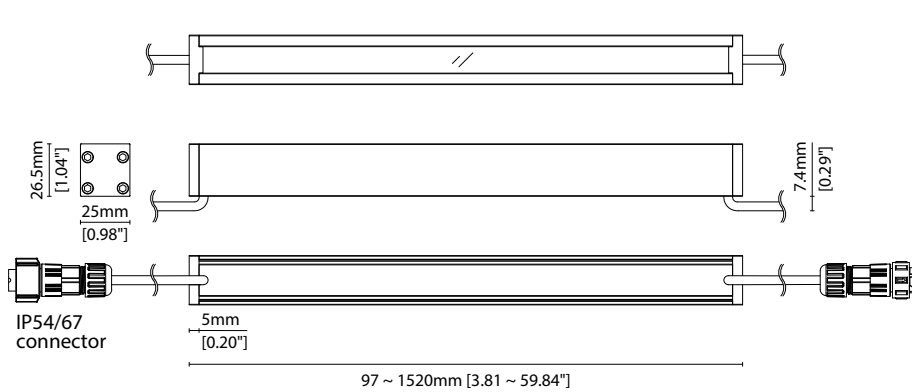
### PERFORMANCE DATA @ 3000K

Power Consumption	Supply voltage	Supply current
40W/m (12.19W/ft)	24V DC	1.67A/m (0.51A/ft)

### Colour Rendering Index (CRI)

	R1	R2	R3	R4	R5	R6	R7	R8	R9	R10	R11	R12	R13	R14
<b>A-line</b>	95	96	95	94	94	94	95	88	72	89	94	77	95	97

	Clear	Clear + 23° (KKLN-03)	Diffused	Diffused + Nano Louvre	CRI	R9	Rf	Rg
<b>A-line</b>	3960lm/m (1207lm/ft) 99lm/W	2040lm/m (622lm/ft) 51lm/W	1400lm/m (427lm/ft) 35lm/W	480lm/m (146lm/ft) 12lm/W	94	72	-	-



Data derived from independent UKAS/IESNA LM-79-08 accredited testing of production samples.

Linear

# MoMo A040 (40W)

## Code Table



### FIXTURE

Model	Finish	Cover/Lens <sup>1</sup>	Grade <sup>2</sup>	LED	Colour (CCT)	Length Availability <sup>3</sup>	IP	Cable Length	Power Feed <sup>4</sup>	Input				
MoMo	MM	Silver Anodised	SA	Clear	B	A	A	040	2700K 27 3000K 30 4000K 40	m 97-1520mm 38.46mm increments  i 3.82-59.84in 1.51in increments  (Specify length code OR total run length)	IP54 54 IP67 <sup>7</sup> 67	300mm/11.81" 0300	Single ø4.3mm sheath tail S00A  Double ø4.3mm sheath tail D00A  Single ø4.3mm sheath IP67 connector <sup>7</sup> S67A  Double ø4.3mm sheath IP67 connector <sup>7</sup> D67A	DC 24V g

<sup>1</sup> Refer to **Cover/Lens Options** on **Options** pages <sup>2</sup> Refer to **LED Grading Key** on **Specification sheet** page <sup>3</sup> Refer to **Length Availability List** or enter total run length instead of length code  
<sup>4</sup> Refer to **Power Feed Options** on **Options** pages <sup>5</sup> Max length available with Nano Louvre is 1020mm <sup>6</sup> Due to the clear, flush potted polyurethane top layer on IP67 MoMo a colour shift of +/- 20K should be expected  
<sup>7</sup> IP67 connectors are used for both IP67 and IP54 product housings

### Code Example:

MM	-	SA	-	C	-	A	-	040	-	30	-	m	520	-	67	-	0300	-	D67A	-	g
MoMo		Silver Anodised		Diffused		A		040		3000K		519.8mm		IP67		300mm/11.81"		Double ø4.3mm sheath IP67 connector		DC 24V	

### ACCESSORIES

#### Mounting Accessories

KKCP-03	Clip (1no.)
KKCP-53	Clip (500no.)
KKCP-09	Lock Clip
KKBK-07	Fixing plate
KKBK-21	Adjustable bracket

\* Refer to **Mounting accessories** on **Accessories** pages

#### Connection Accessories

CN67-2P-0300	IP67 2 PIN male & female 300mm/11.81" pair
CN67-2P-1000	IP67 2 PIN male & female 1000mm/39.37" pair
CN67-2P-3000	IP67 2 PIN male & female 3000mm/118.11" pair

\* Refer to **Power feed** on **Accessories** pages

#### Exterior Junction Boxes

KKJB-07	IP67 Slim J-Box
KKJB-07R	Potting Resin for IP67 Slim J-Box

\* Refer to **Exterior Junction Boxes** on **Accessories** pages

#### PSU/Driver

0-10V/1-10V/DALI/DMX

\* Refer to **Driver/PSU Options** page for details or provide requirement and KKDC to offer the suitable option

### LED ENGINE VARIANTS (LED STRIP TYPE)

Colour	Output	LED	Lumen/m	Lumen/ft	W/m	W/ft	Spec Doc	Length	Increment
Single CCT	Low	352	420	127	5.5	1.67	MoMo 352	103.3-2020mm (4.07-79.53in)	83.3mm (3.28in)
	Mid	504	990	302	12.5	3.81	MoMo 504	120-2020mm (4.72-79.53in)	100mm (3.94in)
	High	508	1370	418	17.5	5.33	MoMo 508	91.4-2020mm (3.60-79.53in)	71.4mm (2.81in)
	Max	512	2370	720	30.2	9.2	MoMo 512	91.4-2020mm (3.60-79.53in)	71.4mm (2.81in)
	<b>Max</b>	<b>040</b>	<b>3960</b>	<b>1207</b>	<b>40</b>	<b>12.19</b>	<b>MoMo A040</b>	<b>97-1520mm (3.82-59.84in)</b>	<b>38.46mm (1.51in)</b>
Warm Dim/Dynamic White	Mid	207	720	219	11	3.35	MoMo 207	103.3-2020mm (4.07-79.53in)	83.3mm (3.28in)
	Mid	208	1210	409	15.6	4.75	MoMo 208	186.7-2020mm (7.35-79.53in)	166.7mm (6.56in)
RGB	501		Red 124 Green 252 Blue 41 RGB 398	Red 38 Green 77 Blue 12 RGB 121	15.6	4.75	MoMo RGB	103.3-2020mm (4.07-79.53in)	83.3mm (3.28in)

\* Performance data: A/s/e-line, clear cover, 3000K

Linear

# MoMo A040 (40W)

## Length Availability List



Length Code		Fixture Length <sup>1</sup>		LED Strip <sup>2</sup>		End Cap Dimension <sup>3</sup>		Wattage (W)	Output (lm)
Metric	Imperial(US)	Metric	Imperial(US)	Metric	Imperial(US)	Metric	Imperial(US)		3000K (Test Data)
m0097	i0004	97mm	3.82in	77mm	3.03in	10mm	0.39in	3.08	305
m0135	i0005	135mm	5.33in	115mm	4.54in	10mm	0.39in	4.62	457
m0174	i0007	174mm	6.84in	154mm	6.06in	10mm	0.39in	6.15	609
m0212	i0008	212mm	8.36in	192mm	7.57in	10mm	0.39in	7.69	762
m0251	i0010	251mm	9.87in	231mm	9.09in	10mm	0.39in	9.23	914
m0289	i0011	289mm	11.39in	269mm	10.60in	10mm	0.39in	10.77	1066
m0328	i0013	328mm	12.90in	308mm	12.11in	10mm	0.39in	12.31	1218
m0366	i0014	366mm	14.42in	346mm	13.63in	10mm	0.39in	13.85	1371
m0405	i0016	405mm	15.93in	385mm	15.14in	10mm	0.39in	15.38	1523
m0443	i0017	443mm	17.44in	423mm	16.66in	10mm	0.39in	16.92	1675
m0482	i0019	482mm	18.96in	462mm	18.17in	10mm	0.39in	18.46	1828
m0520	i0020	520mm	20.47in	500mm	19.68in	10mm	0.39in	20.00	1980
m0558	i0022	558mm	21.99in	538mm	21.20in	10mm	0.39in	21.54	2132
m0597	i0024	597mm	23.50in	577mm	22.71in	10mm	0.39in	23.08	2285
m0635	i0025	635mm	25.01in	615mm	24.23in	10mm	0.39in	24.61	2437
m0674	i0027	674mm	26.53in	654mm	25.74in	10mm	0.39in	26.15	2589
m0712	i0028	712mm	28.04in	692mm	27.26in	10mm	0.39in	27.69	2741
m0751	i0030	751mm	29.56in	731mm	28.77in	10mm	0.39in	29.23	2894
m0789	i0031	789mm	31.07in	769mm	30.28in	10mm	0.39in	30.77	3046
m0828	i0033	828mm	32.59in	808mm	31.80in	10mm	0.39in	32.31	3198
m0866	i0034	866mm	34.10in	846mm	33.31in	10mm	0.39in	33.84	3351
m0905	i0036	905mm	35.61in	885mm	34.83in	10mm	0.39in	35.38	3503
m0943	i0037	943mm	37.13in	923mm	36.34in	10mm	0.39in	36.92	3655
m0982	i0039	982mm	38.64in	962mm	37.85in	10mm	0.39in	38.46	3808
m1020	i0040	1020mm	40.16in	1000mm	39.37in	10mm	0.39in	40.00	3960
m1058	i0042	1058mm	41.67in	1038mm	40.88in	10mm	0.39in	41.54	4112
m1097	i0043	1097mm	43.18in	1077mm	42.40in	10mm	0.39in	43.08	4264
m1135	i0045	1135mm	44.70in	1115mm	43.91in	10mm	0.39in	44.61	4417
m1174	i0046	1174mm	46.21in	1154mm	45.43in	10mm	0.39in	46.15	4569
m1212	i0048	1212mm	47.73in	1192mm	46.94in	10mm	0.39in	47.69	4721
m1251	i0049	1251mm	49.24in	1231mm	48.45in	10mm	0.39in	49.23	4874
m1289	i0051	1289mm	50.76in	1269mm	49.97in	10mm	0.39in	50.77	5026
m1328	i0052	1328mm	52.27in	1308mm	51.48in	10mm	0.39in	52.31	5178
m1366	i0054	1366mm	53.78in	1346mm	53.00in	10mm	0.39in	53.84	5331
m1405	i0055	1405mm	55.30in	1385mm	54.51in	10mm	0.39in	55.38	5483
m1443	i0057	1443mm	56.81in	1423mm	56.02in	10mm	0.39in	56.92	5635
m1481	i0058	1481mm	58.33in	1461mm	57.54in	10mm	0.39in	58.46	5787
m1520	i0060	1520mm	59.84in	1500mm	59.05in	10mm	0.39in	60.00	5940

<sup>1</sup> Actual total overall length of light fixture (LED strip + end caps + void/wire hole)

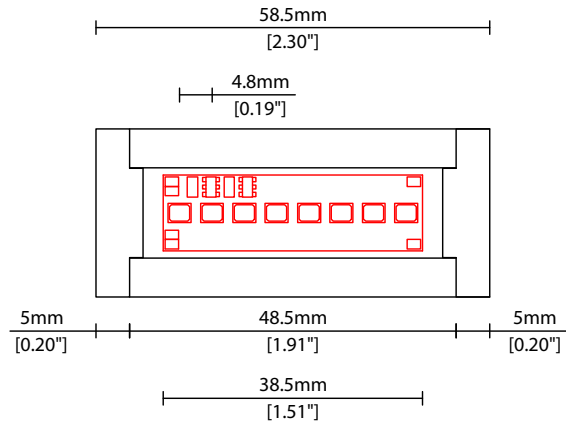
<sup>2</sup> Actual length of PCB strip

<sup>3</sup> Actual length of 2x end caps

Linear

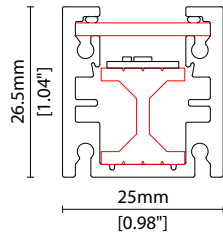
# MoMo A040 (40W)

## Length Availability List

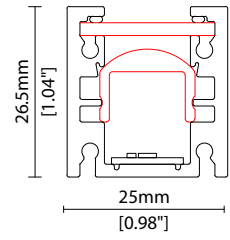


## COVER/LENS OPTIONS

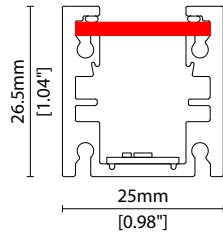
\* Options are an integral part of the fixture ordering codes. Please refer to **Code Table** pages.



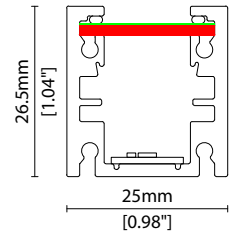
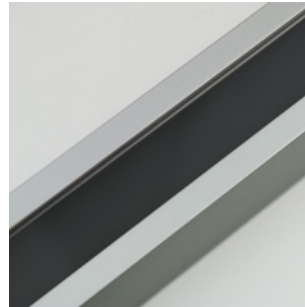
**B** Clear Cover



**A** Clear Cover +  
23° (KKLN-03) lens



**C** Diffused Cover

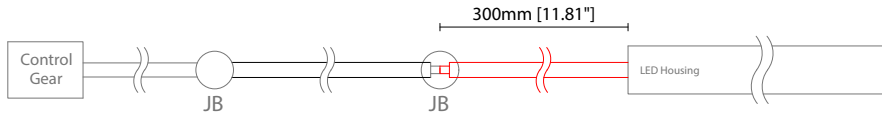


**CN** Diffused Cover + Nano Louvre

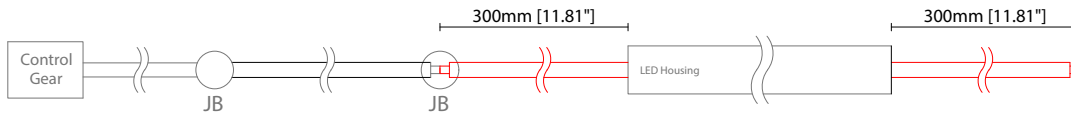
### POWER FEED OPTIONS

\* Options are an integral part of the fixture ordering codes. Please refer to **Code Table** pages.

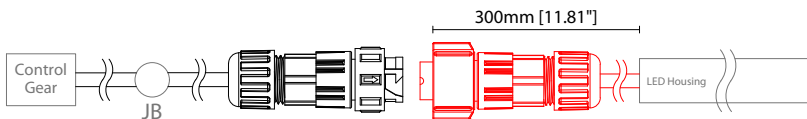
**0300 S00A 300mm (11.81") Single Ø4.3mm sheath tail**



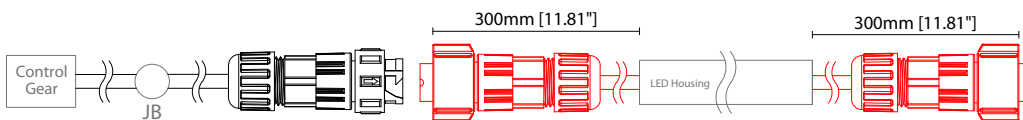
**0300 D00A 300mm (11.81") Double Ø4.3mm sheath tail**



**0300 S67A 300mm (11.81") Single ø4.3mm sheath IP67 connector**

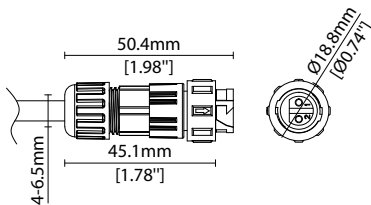


**0300 D67A 300mm (11.81") Double ø4.3mm sheath IP67 connector**

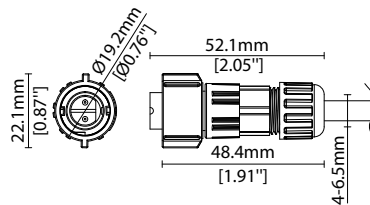


### IP67 2 Pin Connector

Female connector  
2 PIN (IP67)



Male connector  
2 PIN (IP67)

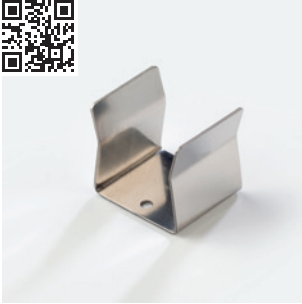


### Key

- Control Gear Power supply, sub-controllers & control systems
- JB Junction box / cable connection

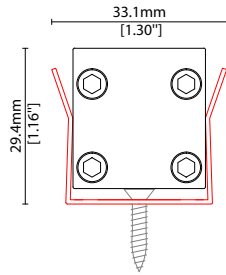
### MOUNTING ACCESSORIES

Note: Accessories are to be ordered separately with corresponding code shown below.

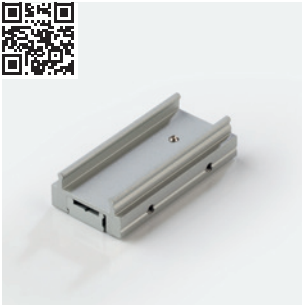
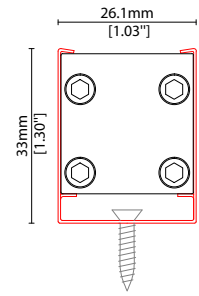


KKCP-03 (1no.)  
KKCP-53 (500no.)

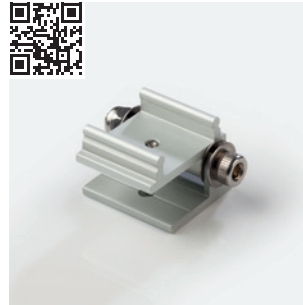
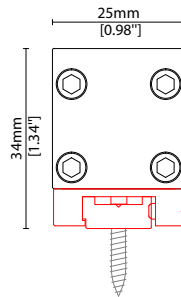
Clip (allow 3 per metre/40in)  
S/Steel finish  
L25/W33.1/H29.4mm  
(L0.98/W1.3/H1.16")



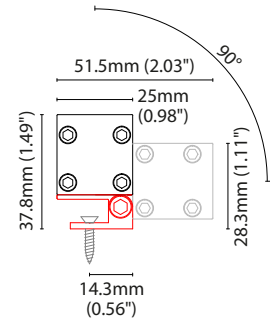
KKCP-09  
Lock clip (allow 2 per metre/40in)  
S/Steel finish  
L25/W26.1/H33mm  
(L0.98/W1.03/H1.3")



KKBK-07  
Fixing plate (allow 2 per metre/40in)  
Anodised aluminium finish  
L50/W25/H34mm  
(L1.97/W0.98/H1.34")  
Pre-assembled in factory



KKBK-21  
Adjustable bracket  
(allow 2 per metre/40in)  
Anodised aluminium finish  
L34/W25/H37.8mm  
(L1.34/W0.98/H1.49")  
Pre-assembled in factory



### POWER FEED



CN67-2P-0300 300mm (11.81in) pair  
CN67-2P-1000 1000mm (39.37in) pair  
CN67-2P-3000 3000mm (118.11in) pair

IP67

2 PIN male + female connector set



Linear

# MoMo A040 (40W) Accessories

# KKDC

## EXTERIOR JUNCTION BOXES



**KKJB-07**

IP67 Slim J-Box  
(including type A,B,C, D bushings)



**KKJB-07R**

Potting resin for IP67 Slim J-Box

## KKDC CONTROL



**KKDM-06** 1-10V

visDIM dimmable sub-controller  
(4 x 8A max @ 12-36V)

IP20  
Plastic housing  
L170/W59/H29mm  
(L6.69/W2.32/H1.14in)



**KKSC-05** DMX

visDIM dimmable sub-controller  
(4 x 5A max @ 12-36V)

IP20  
Plastic housing  
L170/W53.4/H28mm  
(L6.69/W2.10/H1.10in)



**KKDL-02** DALI

visDIM dimmable sub-controller  
(4 x 8A max @ 12-36V)

IP20  
Plastic housing  
L170/W59/H29mm  
(L6.69/W2.32/H1.14in)



**KKDL-03** DALI

visDIM dimmable sub-controller  
(4 x 5A max @ 12-36V)

IP20  
Plastic housing  
L166/W53.4/H23mm  
(L6.54/W2.10/H0.91in)

### AVAILABLE PSU OPTIONS

Control Mode	PSU (Order Code)	Input Voltage AC	Output Voltage DC	Rated Output Current	Rated Power	Dim %	IP Rating
Switched	CEN-60-24	90-295V	24V	2.5A	60W	-	IP67
	HLG-60H-24	90-305V	24V	2.5A	60W	-	IP67
	HLG-100H-24	90-305V	24V	4.0A	100W	-	IP67
	HLG-150H-24	90-305V	24V	6.3A	150W	-	IP67
	HLG-240H-24	90-305V	24V	10A	240W	-	IP67
0-10V (1-10V)	PWM-40-24	90-305V	24V	1.67A	40W	100-0.15 (100-10)	IP67
	PWM-60-24	90-305V	24V	2.5A	60W	100-0.15 (100-10)	IP67
	PWM-90-24	90-305V	24V	3.67A	90W	100-0.15 (100-10)	IP67
	PWM-120-24	90-305V	24V	5.0A	120W	100-0.15 (100-10)	IP67
DALI	LIN100A1	120-277V	24V	1A per channel	100W	100-0.1	IP66/IP40
DMX RGB	LIN100A1	120-277V	24V	1.33A per channel	100W	100-0.1	IP66/IP40
DMX RGBW	LIN100A1	120-277A	24V	1A per channel	100W	100-0.1	IP66/IP40

### Flicker Free Options - Combination of PSU+ sub-controller

Control Mode	PSU (Order Code)	Sub-controller (Order Code)	Input Voltage AC	Output Voltage DC	Rated Output Current	Rated Power	Dim %	IP Rating PSU/ Sub-controller
0-10V or 1-10V	CEN-60-24	KKDM-06	90-295V	24V	2.5A	60W	100-0.9	IP67/IP20
	HLG-60H-24	KKDM-06	90-295V	24V	2.5A	60W	100-0.9	IP67/IP20
	HLG-100H-24	KKDM-06	90-295V	24V	4.0A	100W	100-0.9	IP67/IP20
	HLG-150H-24	KKDM-06	90-295V	24V	6.3A	150W	100-0.9	IP67/IP20
	HLG-240H-24	KKDM-06	90-295V	24V	10.0A	240W	100-0.9	IP67/IP20
DALI	CEN-60-24	KKDL-02/03	90-295V	24V	2.5A	60W	100-0.1	IP67/IP20
	HLG-60H-24	KKDL-02/03	90-305V	24V	2.5A	60W	100-0.1	IP67/IP20
	HLG-100H-24	KKDL-02/03	90-305V	24V	4.0A	100W	100-0.1	IP67/IP20
	HLG-150H-24	KKDL-02/03	90-305V	24V	6.3A	150W	100-0.1	IP67/IP20
	HLG-240H-24	KKDL-02/03	90-305V	24V	10.0A	240W	100-0.1	IP67/IP20
DMX RGB	CEN-60-24	KKSC-05	90-295V	24V	2.5A	60W	100-0.9	IP67/IP20
	HLG-60H-24	KKSC-05	90-305V	24V	2.5A	60W	100-0.9	IP67/IP20
	HLG-100H-24	KKSC-05	90-305V	24V	4A	100W	100-0.9	IP67/IP20
	HLG-150H-24	KKSC-05	90-305V	24V	6.3A	150W	100-0.9	IP67/IP20
	HLG-240H-24	KKSC-05	90-305V	24V	10.0A	240W	100-0.9	IP67/IP20

<sup>1</sup> The items shown above cover the most frequently used specification but does not exhaust the possible options

<sup>2</sup> PSU and/or driver can be chosen from the table, or KKDC may recommend the best option upon receipt of the controls requirement and installation environment

<sup>3</sup> Electrical shop drawing will include detailed information of PSU and relevant control drivers

<sup>4</sup> Cut sheets are available on the controls section of [www.kkdc.lighting](http://www.kkdc.lighting) or upon request