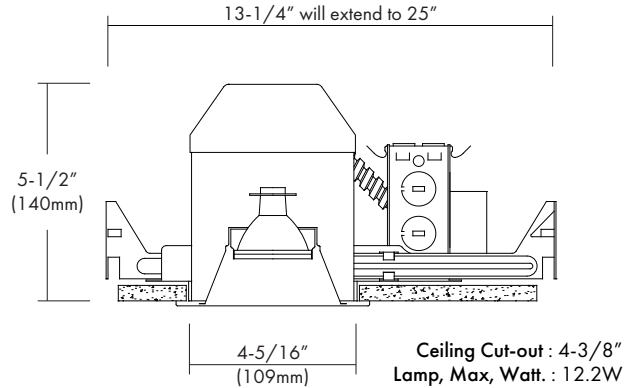
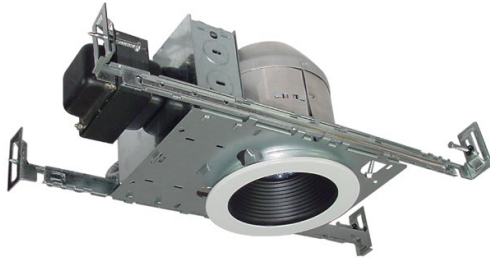


LEDH-410ICA

120 and 277 VAC to Low Voltage MR16, 4" Low Voltage LED IC Rated Recessed Housing for New Construction

| | | |
|-------------|--|------|
| Catalog # | | Type |
| Project | | Date |
| Prepared by | | |

MR16 LED Bulb



DESCRIPTION

The LEDH-410ICA is designed for insulated ceilings and can be in direct contact with insulation material. The LEDH-410ICA offers a wide choice of trim types including reflector, lensed and wall wash trims. This AIR-TIGHT housing design prevents airflow through the ceiling, helping save on heating and cooling costs.

DESIGN FEATURES

Housing

- Single wall aluminum housing.
- 5-1/2" height allows use in 2"X6" joist construction.
- Housing adjusts for ceilings up to 1-1/4" thick.

Junction Box

- Listed for through branch circuit wiring. (Max. 8 No 12 AWG 90° C branch circuit conductors. (4 in, 4 out))
- (5) 1/2" knockouts with true pry-out slots and (4) knockouts with Romex cable clamp.
- Ground wire provided on J-box.

Mounting Frame

- Galvanized steel construction.
- 8" L X 5-1/2" W

Transformer

- 120V magnetic transformer steps line voltage down to 12V operating voltage for lamps up to 15W Max.
- Available 277V-12V transformer.

Socket

- GU5.3 Ceramic Bi-Pin Socket.

Lamp

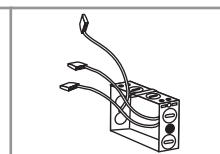
- LED MR16 12V 12.2W Max. (Not Included: see "Cree COB LED at end of section for Specs and ordering information)

Bar Hangers

- Maximum extension of 24" allows for extra distance between joists.
- Housing can be positioned at any point within 24" joist span.
- Snap-off segments allow tool-free shortening for 12" joists. Bar hangers may be repositioned 90 degrees.
- Integral T-bar clips snaps onto T-bars and no additional clips are required.

Optional "Quick Connect" Push-in Wire Connectors.

- Three "Quick Connectors"
- Pre-installed push-in wire connectors for fast and easy wiring.



| Recommended Dimmer |
|---|
| Lutron : D i v a (Dv-600P) SkyLark (S -600P) Ariadni (AY-600P) |
| Consult tech. service or factory for additional dimmers |

Listing

- cETLus Damp Location.

07/30/2020



Designs/Trims

For LEDH-410ICA, LEDH-410ICAR

MR16 LED Bulb

LT-42

Adjustable Baffle
White Metal Trim Ring
O.D : 4-7/8"



LT-42-WH



LT-42-BK



LT-42-CH

LT-44

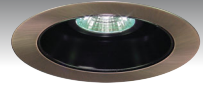
Adjustable Reflector
White Metal Trim Ring
O.D : 4-7/8"



LT-44-CL



LT-44-GD



LT-44BK-MO

LT-43

Eyeball
White Metal Trim Ring
O.D : 4-7/8"



LT-43WH



LT-43PB



LT-43MO

LT-47

Retractable Wall Wash
White Metal Trim Ring
O.D : 4-7/8"



LT-47WH



LT-47CH



LT-47MO

LT-48

Adjustable Wall Wash
White Metal Trim Ring
O.D : 4-7/8"



LT-48WH



LT-48SN



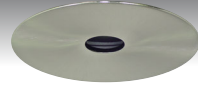
LT-48AN

LT-49

Pin Hole w/ Baffle
White Metal Trim Ring
O.D : 4-7/8"



LT-49WH



LT-49SN



LT-49MO

LT-410

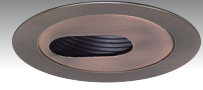
Slotted Wall Wash w/ Baffle
White Metal Trim Ring
O.D : 4-7/8"



LT-410WH



LT-410BK



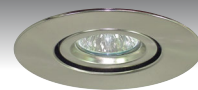
LT-410BK-MO

LT-411

Gimbal
White Metal Trim Ring
O.D : 4-7/8"



LT-411WH



LT-411SN



LT-411MO

Designs/Trims

For LEDH-410ICA, LEDH-410ICAR

MR16 LED Bulb

LT-416

Eyeball w/ Baffle
White Metal Trim Ring
O.D : 4-7/8"



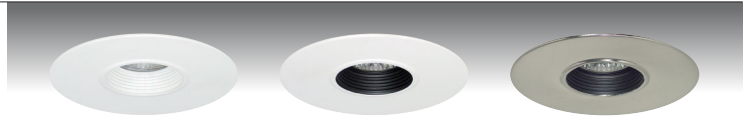
LT-416WH

LT-416BK

LT-416BK-PB

LT-418

Pin Spot
White Metal Trim Ring
O.D : 4-7/8"



LT-418WH

LT-418BK

LT-418BK-SN

LT-46

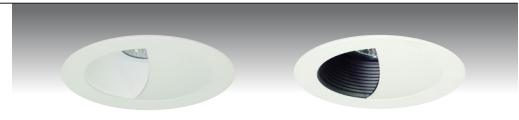
Wall Wash
White Metal Trim Ring
O.D : 4-7/8"



LT-46WH

LT-417

Wall Wash w/ Baffle
White Metal Trim Ring
O.D : 4-7/8"



LT-417WH

LT-417BK

Ordering Information

| Model | Voltage | -Options | Design / Trim* | | | | | | | | | | | | | | | | | | | | | | | | | | | | | | | | | | | | |
|--|--|---|--|-----------------|-----------------|------------------|-----------------|------------------------|------------------|------------------|--------------------------|------------------------------------|-----------------|-----------------|------------------|--------------------------|------------------------|------------------|-----------------|-----------------|----------------------------------|-----------------|------------------|-----------------|----------------|------------------|------------------|--------------------------|---------------------------|------------------|-----------------|------------------|--|------------------|-------------------------|--|-----------------|------------------|--|
| LEDH-410ICA = 4", IC New Construction | Blank = 120V to 12V 277 = 277V to 12V | -E = Electronic Transformer -Q = Quick Wire Connectors | <table border="0"> <tr> <td>LT-42WH = White</td> <td>LT-48WH = White</td> <td>LT-416WH = White</td> </tr> <tr> <td>LT-42BK = Black</td> <td>LT-48SN = Satin Nickel</td> <td>LT-416BK = Black</td> </tr> <tr> <td>LT-42CH = Chrome</td> <td>LT-48AN = Antique Nickel</td> <td>LT-416BK-PB = Black-Polished Brass</td> </tr> <tr> <td>LT-43WH = White</td> <td>LT-49WH = White</td> <td>LT-418WH = White</td> </tr> <tr> <td>LT-43PB = Polished Brass</td> <td>LT-49SN = Satin Nickel</td> <td>LT-418BK = Black</td> </tr> <tr> <td>LT-43MO = Mocha</td> <td>LT-49MO = Mocha</td> <td>LT-418BK-SN = Black-Satin Nickel</td> </tr> <tr> <td>LT-44CL = Clear</td> <td>LT-410WH = White</td> <td>LT-46WH = White</td> </tr> <tr> <td>LT-44GD = Gold</td> <td>LT-410BK = Black</td> <td>LT-417WH = White</td> </tr> <tr> <td>LT-44BK-MO = Black-Mocha</td> <td>LT-410BK-MO = Black-Mocha</td> <td>LT-417BK = Black</td> </tr> <tr> <td>LT-47WH = White</td> <td>LT-411WH = White</td> <td></td> </tr> <tr> <td>LT-47CH = Chrome</td> <td>LT-411SN = Satin Nickel</td> <td></td> </tr> <tr> <td>LT-47MO = Mocha</td> <td>LT-411MO = Mocha</td> <td></td> </tr> </table> | LT-42WH = White | LT-48WH = White | LT-416WH = White | LT-42BK = Black | LT-48SN = Satin Nickel | LT-416BK = Black | LT-42CH = Chrome | LT-48AN = Antique Nickel | LT-416BK-PB = Black-Polished Brass | LT-43WH = White | LT-49WH = White | LT-418WH = White | LT-43PB = Polished Brass | LT-49SN = Satin Nickel | LT-418BK = Black | LT-43MO = Mocha | LT-49MO = Mocha | LT-418BK-SN = Black-Satin Nickel | LT-44CL = Clear | LT-410WH = White | LT-46WH = White | LT-44GD = Gold | LT-410BK = Black | LT-417WH = White | LT-44BK-MO = Black-Mocha | LT-410BK-MO = Black-Mocha | LT-417BK = Black | LT-47WH = White | LT-411WH = White | | LT-47CH = Chrome | LT-411SN = Satin Nickel | | LT-47MO = Mocha | LT-411MO = Mocha | |
| LT-42WH = White | LT-48WH = White | LT-416WH = White | | | | | | | | | | | | | | | | | | | | | | | | | | | | | | | | | | | | | |
| LT-42BK = Black | LT-48SN = Satin Nickel | LT-416BK = Black | | | | | | | | | | | | | | | | | | | | | | | | | | | | | | | | | | | | | |
| LT-42CH = Chrome | LT-48AN = Antique Nickel | LT-416BK-PB = Black-Polished Brass | | | | | | | | | | | | | | | | | | | | | | | | | | | | | | | | | | | | | |
| LT-43WH = White | LT-49WH = White | LT-418WH = White | | | | | | | | | | | | | | | | | | | | | | | | | | | | | | | | | | | | | |
| LT-43PB = Polished Brass | LT-49SN = Satin Nickel | LT-418BK = Black | | | | | | | | | | | | | | | | | | | | | | | | | | | | | | | | | | | | | |
| LT-43MO = Mocha | LT-49MO = Mocha | LT-418BK-SN = Black-Satin Nickel | | | | | | | | | | | | | | | | | | | | | | | | | | | | | | | | | | | | | |
| LT-44CL = Clear | LT-410WH = White | LT-46WH = White | | | | | | | | | | | | | | | | | | | | | | | | | | | | | | | | | | | | | |
| LT-44GD = Gold | LT-410BK = Black | LT-417WH = White | | | | | | | | | | | | | | | | | | | | | | | | | | | | | | | | | | | | | |
| LT-44BK-MO = Black-Mocha | LT-410BK-MO = Black-Mocha | LT-417BK = Black | | | | | | | | | | | | | | | | | | | | | | | | | | | | | | | | | | | | | |
| LT-47WH = White | LT-411WH = White | | | | | | | | | | | | | | | | | | | | | | | | | | | | | | | | | | | | | | |
| LT-47CH = Chrome | LT-411SN = Satin Nickel | | | | | | | | | | | | | | | | | | | | | | | | | | | | | | | | | | | | | | |
| LT-47MO = Mocha | LT-411MO = Mocha | | | | | | | | | | | | | | | | | | | | | | | | | | | | | | | | | | | | | | |

Example : LEDH-410ICA-E-Q

LT-42WH

* Consult factory for other Color Temperatures and Finishes