



Height

12' - 30'

Pole Shaft

The Pole shaft will be constructed of seamless extruded tube of 6063 aluminum alloy per the requirements of ASTM B221. The shaft assembly shall be full-length heat treated after base plate weld to produce a T6 temper.

Base

4-Bolt Cast Aluminum Base Flange of alloy 356-T6.

Anchor Bolts

All anchor bolts are hot dipped galvanized steel and come with two galvanized nuts and washers per bolt. Minimum yield strength 50,000 psi. Anchor bolts are not included for Custom Bolt Circle.

Nut Cover

Aluminum nut covers (alloy 356-F) and stainless steel hex head attaching screws.

Hand-Hole

4"-5" Butt Diameters - 2" x 4" Hand-hole with curved lap style aluminum door and 2 stainless steel self tapping screws. A ground provision incorporating a tapped 1/4"-20NC hole is provided.

6" Butt Diameter - Reinforced 3" x 5" curved cast aluminum frame (alloy 356 - T6) with aluminum door and 2 stainless steel hex head screws. A ground provision incorporating a tapped 3/8" hole is provided opposite of hand-hole.

7" + Butt Diameter - Reinforced 4" x 6" curved cast aluminum frame (alloy 356 - T6) with aluminum door and 2 stainless steel hex head screws. Reinforced frame will contain a tapped 3/8"-16NC grounding provision.

Pole Cap

All poles come with a removable polymer pole cap installed. All pole caps are black finish.

Finish

All poles are treated with sand blast media for a near white finish, power blasted with 100 psi prior to powder coat application. Poles are pre-heated then electrostatically applied polyester powder coat with a 3 to 5 mil thickness for maximum adherence.

Marine Grade Finish

All poles are washed through a 5-stage cleaning system with a deionized rinse, a 3 to 5 mils zinc rich durable polyester primer powder coat, followed by a 3 to 5 mils super durable polyester powder coat finish.

Vibration Dampener

The Vibration Dampener is factory installed. Field secured by contractor at the base during installation.

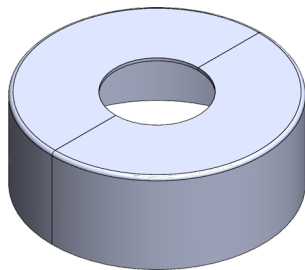
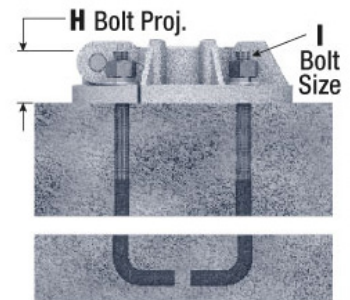
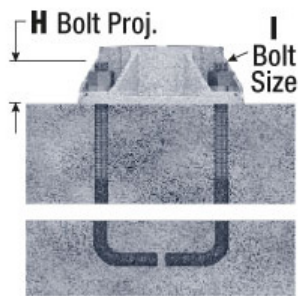
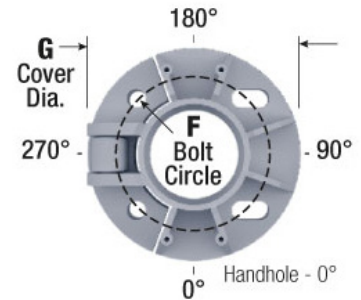
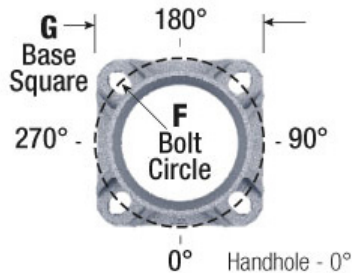
Project Name:

Type:

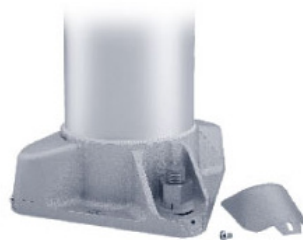
RTAP ORDERING GUIDE

Cat#	Height	Gauge	Butt Diameter	Top Diameter
Round Tapered Aluminum Pole (RTAP)	12' (12)	.125	4" (4)	3" (3)
	14' (14)	Wall Thickness	5" (5)	4" (4)
	15' (15)	(125)	6" (6)	5" (5)
	18' (18)	.156	7" (7)	
	20' (20)	Wall Thickness	8" (8)	
	25' (25)	(156)	9" (9)	
	30' (30)	.188	10" (10)	
	35' (35)	Wall Thickness	*Check EPA Chart for available options	
	40' (40)	(188)		
		.219		
		Wall Thickness		
		(219)		
		.250		
		Wall Thickness		
		(250)		
		.312		
		Wall Thickness		
		(312)		
		*Contact Factory for EPA Information		
Mounting	Color	Bolts	Options	
Single (SGL)	Bronze Textured (BRZ)	3/4" x 30" (3430)	GFI Kit (GFI20A)	
Double (D-90) (D-180)	White Textured (WHT)	1" x 36" (136)	20 Amp Weather Proof Receptacle	
Triple (T-90)	Smooth White Gloss (SWT)	Less Anchor Bolts (LAB)	GFI Provision Only (PROV)	
Quad (QD)	Silver (SVR)		Round Base Cover (RBC)	
No Drill (ND) *Tenon Option	Green Textured (GRN)		1/2" Coupling (COUP) *Specify Location	
Tenon	Hunter Green Textured (HGN)		Hinge Base Plate (HBP) *20' Max Pole Height	
2 3/8" Round (T2R)	Black Textured (BLK)		Vibration Dampener (VD)	
3" Round (T3R)	Smooth Black Gloss (SBK)		Extra Hand Hole (XHH) *Specify Location	
	Graphite Textured (GPH)		Marine Grade Finish (MGF)	
	Grey Textured (GRY)		Anodized Hiawatha Metal #311 (ANO)	
	Custom (CS)			

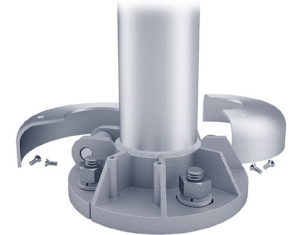
*Consult factory for EPA Data on RTAP



**Optional Round
Base Cover**



**Standard
Base Detail**



**Optional Hinged
Base Detail**

**Anchor Bolts are NOT included with Custom Bolt Circle.
*Do NOT pour concrete referencing this drawing. Consult Factory.
Must Specify 4-Bolt Pattern.

**All wind loading calculations are based on sustained wind force plus an additional 1.3 gust.*

MOUNTING CONFIGURATION



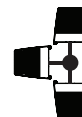
Single
(SGL)



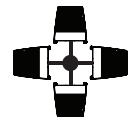
Double
(D-90)



Double
(D-180)



Triple
(T-90)



Quad
(QD)