

The Sea Side Bollard is a combination of security, style and Vandal resistance that blends beautifully into any pathway environment.

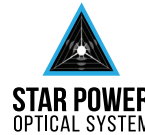
This luminaire tower can disperse light in 45° angle with the cast Cutoff Grill (COG45). Paracline Reflector (PR) or Stacked Louver (SL) are also optional light distributions.

The Sea Side Bollard uses the patented Star Power™ reflector system. The Dome Top selection offers either Dome or Flat and are available in either 8" or 6" Round or 8" Square. Kelvin temperature offering of 2700K, 3000K, 3500K, 4000K and 5000K.

Conforms to the strictest Made in America standards—designed, tooled, fabricated and assembled in the USA.



*SSD-8R-COG45 Shown



STAR POWER™ OPTICAL SYSTEM

The Star Power™ reflector is an excellent system which provides great value and performance. Star Power Patent number: 10168023

LED WATTAGE CHART

	16L
350 milliamps	17w
530 milliamps	26w
700 milliamps	35w

Project Name _____ Type: _____

Cat#	Height	Shaft Dim	Light Dist.	# of LEDs	Milliamps	Kelvin	Volts	Mounting	Color	Options
Sea Side Flat Top (SSF)	26" (2)	6" Round (6R) ③	Cut Off Grill (COG45)	16 (16L)	350 (35)	2700K, 70 CRI (27K7)	120-277 (UNV)	Anchor Base (AB)	Bronze Textured (BRZ)	Button Photocell (PC) ②
	36" (3)	8" Round (8R) ③	Stacked Louver (SL)		530 (53)	2700K, 80 CRI (27K8) ③	347-480 (HV)		White Textured (WHT)	Vandal Resistant Base (VRB)
Sea Side Dome Top (SSD) ③	42" (4)	8" Square (8S)	Paracline Reflector (PR)	700 (7)	3000K, 70 CRI (30K7)	3000K, 80 CRI (30K8) ③	Smooth White Gloss (SWT)	Marine Grade Finish (MGF)		
					3500K, 80 CRI (35K8) ③	House Side Shield (HSS)				
					4000K, 70 CRI (40K7)				Surge Protector (20K)	
					4000K, 80 CRI (40K8) ③					
					5000K, 70 CRI (50K7)				Smooth Black Gloss (SBK)	
					5000K, 80 CRI (50K8) ③	Graphite Textured (GPH)				
	Grey Textured (GRY)									
	Custom (CS)									

Notes:
 ① Consult Factory for Lead Time. Consult Factory for 90 CRI Requests.
 ② Universal Voltage 120-27
 ③ (SSD) Dome Top only available on Round shaft

PRODUCT SPECIFICATIONS

ELECTRICAL

- 120-277 Volts (UNV) or 347-480 Volts (HV)
- 0-10V dimming driver
- Driver power factor at maximum load is $\geq .95$, THD maximum load is 15%
- LED Drivers Ambient Temp. Min is -40°C and Ambient Temp. Max ranges from 50°C to 55°C and, in some cases, even higher. Consult the factory for revalidation by providing the fixture catalog string before quoting and specifying it.
- All internal wiring UL certified for 600 VAC and 105°C
- CRI 70, 80 or 90
- Color temperatures: 2700, 3000K, 3500K, 4000K, 5000K
- Surge Protection: 20kA supplied as standard.

CONSTRUCTION

- Extruded Aluminum. Cast Aluminum. Spun Aluminum

OPTIONS

- MARINE GRADE FINISH (MGF) - A multi-step process creating protective finishing coat against harsh environments. Chemically washed in a 5 stage cleaning system. Pre-baked, Powder coated 3-5 mils of Zinc Rich Super Durable Polyester Primer. Oven Baked. Finished Powder Coating of Super Durable Polyester Powder Coat 3-5 mil thickness.
- VANDAL RESISTANT BASE (VRB)
- HOUSE SIDE SHIELD (HSS)
- 20KA SURGE PROTECTOR (20K)

CONTROL OPTIONS

- PHOTOCCELL (PC) - Button Type
- Controls Agnostic: Please contact factory for your preferred controls option.

OPTICS

Recessed Star Power Optical System is 95% reflective material. Utilizes a linear diffused pattern, softening the light distribution and eliminating any dark shadows or striations.

FINISH

- 3-5 mils electrostatic powder coat.
- NLS Lighting standard high-quality finishes prevent corrosion and protects against extreme environmental conditions

WARRANTY

Five-year limited warranty for drivers and LEDs.



The information and specifications on this document are subject to change without any notification. All values are design, nominal, or typical or prorated values when measured under internal and external laboratory conditions.



701 Kingshill Place, Carson, CA 90746
Call Us Today (310) 341-2037

nlsighting.com

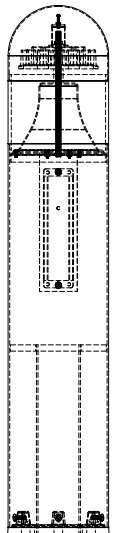
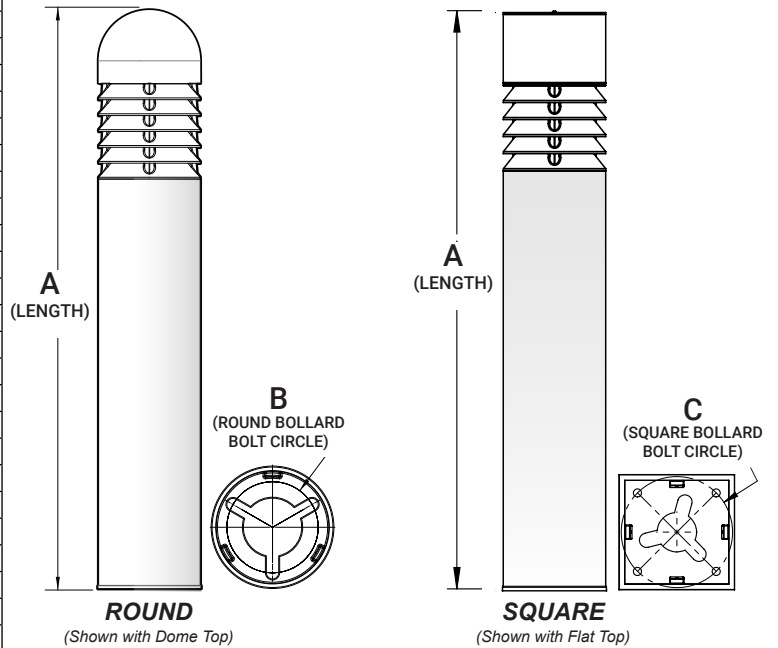
PRODUCT SPECIFICATIONS

SIDE BOLLARD - LUMEN DATA CHART

PART NUMBER	T5 LUMENS	T5 Lm/W	WATTS
SSX-X-XX-COG45-16L-35-30K	945	56	17
SSX-X-XX-COG45-16L-35-40K	994	58	17
SSX-X-XX-COG45-16L-35-50K	994	58	17
SSX-X-XX-COG45-16L-53-30K	1429	55	26
SSX-X-XX-COG45-16L-53-40K	1502	58	26
SSX-X-XX-COG45-16L-53-50K	1502	58	26
SSX-X-XX-COG45-16L-7-30K	1906	53	36
SSX-X-XX-COG45-16L-7-40K	2003	56	36
SSX-X-XX-COG45-16L-7-50K	2003	56	36
SSX-X-XX-SL-16L-35-30K	986	58	17
SSX-X-XX-SL-16L-35-40K	1054	62	17
SSX-X-XX-SL-16L-35-50K	1105	65	17
SSX-X-XX-SL-16L-53-30K	1508	58	26
SSX-X-XX-SL-16L-53-40K	1612	62	26
SSX-X-XX-SL-16L-53-50K	1690	65	26
SSX-X-XX-SL-16L-7-30K	2030	58	35
SSX-X-XX-SL-16L-7-40K	2170	62	35
SSX-X-XX-SL-16L-7-50K	2275	65	35
SSX-X-XX-PR-16L-35-30K	1309	77	17
SSX-X-XX-PR-16L-35-40K	1377	81	17
SSX-X-XX-PR-16L-35-50K	1428	84	17
SSX-X-XX-PR-16L-53-30K	2002	77	26
SSX-X-XX-PR-16L-53-40K	2106	81	26
SSX-X-XX-PR-16L-53-50K	2184	84	26
SSX-X-XX-PR-16L-7-30K	2695	77	35
SSX-X-XX-PR-16L-7-40K	2835	81	35
SSX-X-XX-PR-16L-7-50K	2975	85	35

DIMENSION	6" ROUND	8" ROUND
A	26", 36", or 42"	26", 36", or 42"
B	3-5/8"	6"

DIMENSION	8" SQUARE
A	26", 36", or 42"
C	7.75"



Vandal Resistant Base (VRB)



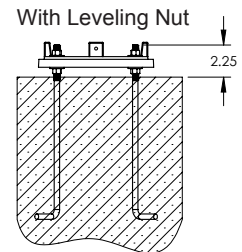
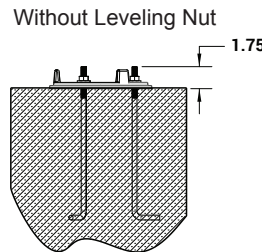
Stacked Louver (SL)



Paracline Reflector (PR)



Cutoff Grill (COG)



*Anchor Bolts are NOT included with Custom Bolt Circle.
*Do NOT pour concrete referencing this drawing. Consult Factory.
*Must Specify 3-Bolt Pattern.