

## FULL CUTOFF SITE LIGHTING

### FORM AND FUNCTION

- Sleek, low profile housing
- Dark Sky Compliant, Full Cutoff
- Engineered for optimum thermal management
- Low depreciation rate
- Reduces energy consumption and costs up to 65%
- Exceeds IES foot candle levels utilizing the least number of poles and fixtures per project
- Optical system designed for Parking Lots, Auto Dealerships, Municipalities, Tennis Courts, Field Lighting

### CONSTRUCTION

- Aluminum
- External cooling fins
- Corrosion resistant external hardware

### FINISH

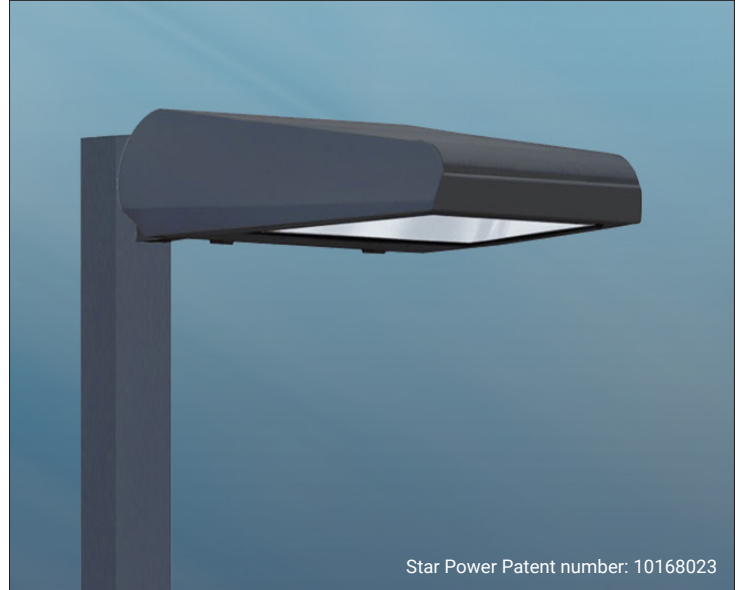
- 3-5 mils electrostatic powder coat.
- NLS' standard high-quality finishes prevent corrosion protects against and extreme environmental conditions

### WARRANTY

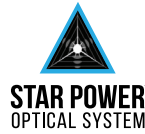
Five-year limited warranty for drivers and LEDs.

### LISTINGS

- Certified to UL 1598
- UL 8750
- CSA C22.2 No. 250.0



Star Power Patent number: 10168023



### STAR POWER™ OPTICAL SYSTEM

The Star Power™ reflector is an excellent system which provides great value and performance.



### LED WATTAGE CHART

	32L	48L	64L
530 milliamps	54w	76w	102w
700 milliamps	71w	104w	136w
1050 milliamps	106w	156w	205w

Project Name:

Type:

--	--	--	--	--	--	--	--	--

Cat#	Light Dist.	# of LEDs	Milliamps	Kelvin	Volts	Mounting	Color	Options
VUE-1 (VUE-1)	Type 2 (T2)	32 (32L)	530 (53)	2700K, 70 CRI (27K7)	120-277 (UNV)	Direct Pole 6" Arm Single, D180 (DPS6) <sup>②</sup>	Bronze Textured (BRZ)	Bird Spikes (BS) Marine Grade Finish (MGF) Photocell (PC) <sup>⑦</sup>
	Type 3 (T3)	48 (48L)	700 (7)	2700K, 80 CRI (27K8) <sup>①</sup>	347-480 (HV)	Direct Pole 10" Arm D90, T90, T120, Quad (DPS10) <sup>②</sup>	White Textured (WHT)	Photocell + Receptacle (PCR) <sup>⑦</sup> Receptacle + Shorting Cap (PER) <sup>⑦</sup> Integral FSP-211 Motion Sensor
	Type 4 (T4)	64 (64L)	1050 (1)	3000K, 70 CRI (30K7)		Knuckle Mount (KM)	Smooth White Gloss (SWT)	(FSP-8) <sup>⑥</sup> For 8' + Below (FSP-20) <sup>⑥</sup> For 9' to 20' (FSP-40) <sup>⑥</sup> For 21' to 40'
	Type 5 (T5)			3000K, 80 CRI (30K8) <sup>①</sup>		Trunnion Mount (TM) <sup>③</sup>	Silver (SVR)	Rotate Optic Right (ROR) Rotate Optic Left (ROL) House Side Shield (HSS)
	Tennis Optic (TT)			3500K, 80 CRI (35K8) <sup>①</sup>		Tennis Arm (TA)	Black Textured (BLK)	Front Side Shield (FSS) Quick Mount Bracket (QMB) Retrofit Quick Mount Bracket (RQMB)
				4000K, 70 CRI (40K7)		Wall Mount (WM) <sup>④</sup>	Smooth Black Gloss (SBK)	Round Pole Adaptor 3"- 4" Pole (RPA4) 5"- 6" Pole (RPA5)
			4000K, 80 CRI (40K8) <sup>①</sup>		Direct Wall Mount (DWM) <sup>⑤</sup>	Graphite Textured (GPH)		
			5000K, 70 CRI (50K7)			Grey Textured (GRY)		
			5000K, 80 CRI (50K8) <sup>①</sup>			Custom (CS)		

#### Notes:

- ① Consult Factory for Lead Time. Consult Factory for 90 CRI Requests.
- ② For Round Pole Specify RPA4 or RPA5
- ③ Standard finish is stainless steel. Can be painted to match fixture
- ④ Includes 6" Bolt On Arm
- ⑤ Includes Wall Plate, Vue-1 Only
- ⑥ Universal Voltage 120-277
- ⑦ 7-Pin Standard

**ELECTRICAL**

- 120-277 Volts (UNV) or 347-480 Volts (HV)
- 0-10V dimming driver
- Driver power factor at maximum load is  $\geq .95$ , THD maximum load is 15%
- LED Drivers Ambient Temp. Min is -40°C and Ambient Temp. Max ranges from 50°C to 55°C and, in some cases, even higher. Consult the factory for revalidation by providing the fixture catalog string before quoting and specifying it.
- All internal wiring UL certified for 600 VAC and 105°C
- All drivers, controls, and sensors housed in enclosed IP-65 compartment
- CRI 70, 80 or 90
- Color temperatures: 2700, 3000K, 3500K, 4000K, 5000K
- Surge Protection: 20KA supplied as standard.

**OPTIONS**

- **BIRD SPIKES (BS)**—offers effective and humane deterrent for larger bird species and provides cost-effective long-term solution to nuisance bird infestations and protect your property.
- **MARINE GRADE FINISH (MGF)**—A multi-step process creating protective finishing coat against harsh environments.
  - Chemically washed in a 5 stage cleaning system.
  - Pre-baked
  - Powder coated 3-5 mils of Zinc Rich Super Durable Polyester Primer.
  - 1-2 feet inside pole coverage top and bottom.
  - Oven Baked.
  - Finished Powder Coating of Super Durable Polyester Powder Coat 3-5 mil thickness.
- **SHIELDS (HSS, FSS)**—Four-sided House Side Shield (HSS) is designed for full property line cut-off. Front-Side Shield (FSS) is a single-sided shield allowing partial cut-off on either side or front of luminaire.

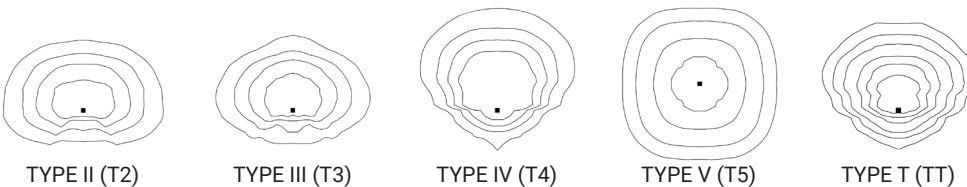
**CONTROLS**

- **FSP-211 (FSP-X)**—Passive infrared (PIR) sensor providing multi-level control based on motion/daylight contribution.
  - All control parameters adjustable via wireless configuration remote storing and transmitting sensor profiles.
  - FSP-20 mounting heights 9-20 feet
  - FSP-40 mounting heights 21-40 feet.
  - Includes 5 dimming event cycles, 0-10V dimming with motion sensing, reprogrammable in the field.
  - FSIR-100 commissioning remote is required to change sensor settings. Please contact factory for ordering.
- **NEMA 7-PIN RECEPTACLE (PE7)**—An ANSI C136.41-2013 receptacle provides electrical and mechanical interconnection between photo control cell and luminaire. Dimming receptacle available two or four dimming contacts supports 0-10 VDC dimming methods or Digital Addressable Lighting Interface (DALI), providing reliable power interconnect.

**OPTICS**

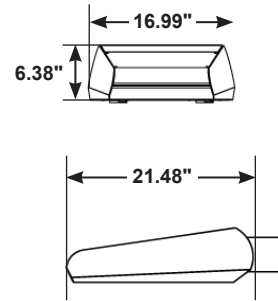
Recessed Star Power Optical System is 95% reflective material. Utilizes a linear diffused pattern, softening the light distribution and eliminating any dark shadows or striations.

- IES Types



The information and specifications on this document are subject to change without any notification. All values are design, nominal, typical or prorated values when measured under internal and external laboratory conditions.

**VUE-1**  
Weight: 27 lbs

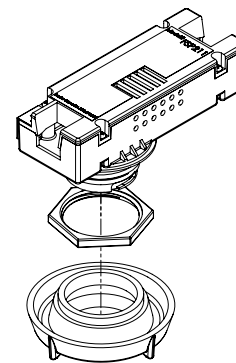


EPA	SGL	D90	D180	T90	T120	QD
VUE-1	1.01	2.02	1.79	2.72	2.78	2.72

**DPX ARM LENGTH**

	SGL	D90	D180	T90	T120	QD
VUE-1	6"	10"	6"	10"	10"	10"

**FSP-211**



VUE - LUMEN DATA CHART

PART NUMBER	T1 OPTIC	Lm/W	T2 OPTIC	Lm/W	T2-HSS OPTIC	Lm/W	T3 OPTIC	Lm/W	T3-HSS OPTIC	Lm/W	T4 OPTIC	Lm/W	T4-HSS OPTIC	Lm/W	T5 OPTIC	Lm/W	WATT
VUE-1-32L-53-30K7	4914	91	5832	108	3780	70	5400	100	4860	90	5292	98	5076	94	5346	99	54
VUE-1-32L-53-40K7	5076	94	5886	109	4046	75	5454	101	5130	95	5454	101	5238	97	5400	100	54
VUE-1-32L-53-50K7	5346	99	5994	111	4306	79	5508	102	5373	100	5562	103	5403	100	5454	101	54
VUE-1-32L-7-30K7	6461	91	7668	108	4970	70	7100	100	6390	90	6958	98	6674	94	7029	99	71
VUE-1-32L-7-40K7	6674	94	7739	109	5302	74	7171	101	6745	95	7171	101	6937	97	7100	100	71
VUE-1-32L-7-50K7	7029	99	7881	111	5634	79	7242	102	7072	100	7313	103	7135	100	7171	101	71
VUE-1-32L-1-30K7	9646	91	11448	108	7420	70	10600	100	9540	90	10388	98	9964	94	10494	99	106
VUE-1-32L-1-40K7	9964	94	11554	109	7870	74	10706	101	10070	95	10706	101	10282	97	10600	100	106
VUE-1-32L-1-50K7	10494	99	11766	111	8310	78	10812	102	10547	100	10918	103	10653	100	10706	101	106
VUE-1-48L-53-30K7	6916	91	8208	108	5320	70	7600	100	6840	90	7448	98	7197	94	7524	99	76
VUE-1-48L-53-40K7	7144	94	8284	109	5650	74	7676	101	7220	95	7676	101	7372	97	7600	100	76
VUE-1-48L-53-50K7	7524	99	8436	111	5980	78	7752	102	7562	100	7828	103	7638	100	7676	101	76
VUE-1-48L-7-30K7	9464	91	11232	108	7280	70	10400	100	9412	90	10192	98	9828	94	10296	99	104
VUE-1-48L-7-40K7	9776	94	11336	109	7700	74	10504	101	9880	95	10504	101	10140	97	10400	100	104
VUE-1-48L-7-50K7	10296	99	11544	111	8105	78	10608	102	10369	100	10712	103	10452	100	10504	101	104
VUE-1-48L-1-30K7	14196	91	16848	108	10920	70	15600	100	14042	90	15288	98	14664	94	15444	99	156
VUE-1-48L-1-40K7	14664	94	17004	109	11544	74	15756	101	14821	95	15756	101	15132	97	15600	100	156
VUE-1-48L-1-50K7	15444	99	17316	111	12168	78	15912	102	15523	100	16068	103	15678	100	15756	101	156
VUE-1-64L-53-30K7	9282	91	11016	108	7140	70	10200	100	9180	90	9996	98	9588	94	10098	99	102
VUE-1-64L-53-40K7	9588	94	11118	109	7548	74	10302	101	9588	94	10302	101	9894	97	10200	100	102
VUE-1-64L-53-50K7	10098	99	11322	111	7956	78	10404	102	10098	99	10506	103	10251	100	10302	101	102
VUE-1-64L-7-30K7	12376	91	14688	108	9520	70	13600	100	12240	90	13328	98	12852	94	13464	99	136
VUE-1-64L-7-40K7	12784	94	14824	109	10064	74	13736	101	12784	94	13736	101	13232	97	13600	100	136
VUE-1-64L-7-50K7	13464	99	15096	111	10608	78	13872	102	13464	99	14008	103	13600	100	13736	101	136
VUE-1-64L-1-30K7	18655	91	22140	108	14350	70	20500	100	18553	90	20090	98	19065	93	20295	99	205
VUE-1-64L-1-40K7	19270	94	22345	109	15170	74	20705	101	19271	94	20705	101	19475	95	20500	100	205
VUE-1-64L-1-50K7	20295	99	22755	111	15990	78	20910	102	20295	99	21115	103	20500	100	20705	101	205

Lumen Maintenance Data							
Ambient Temperature	Drive Current	L90 Hours*	L70 Hours**	30,000 Hours*	50,000 Hours*	60,000 Hours*	100,000 Hours**
25°C	Up to 700mA	58,000	173,000	95.7%	91.6%	89.6%	82.1%
	1050mA	52,000	142,000	95.6%	90.4%	87.9%	78.6%

\*Reported extrapolations per IESNA TM-21      \*\*Projected extrapolations per IESNA TM-21

MOUNTING OPTIONS



Direct Wall Mount



Wall Mount (Includes 6" Arm)



Trunnion Mount



Tennis Arm

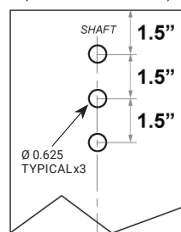


Knuckle Mount

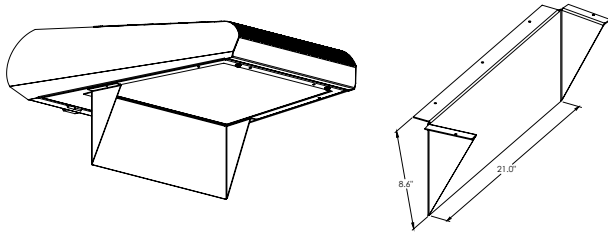


Direct Pole Mount

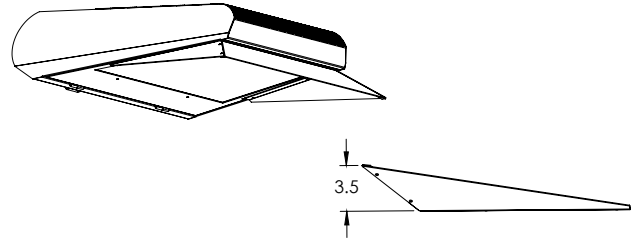
2X4 DRILL PATTERN (VUE-1 and VUE-2)



**OPTIONAL**

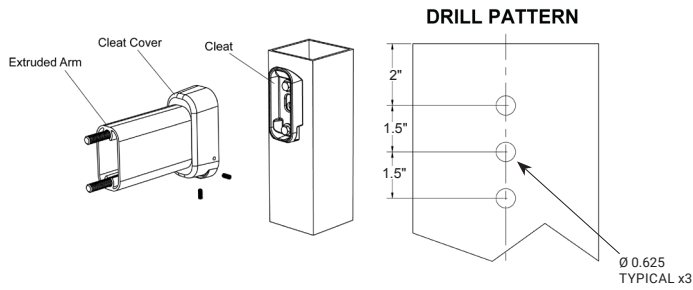


**HOUSE SIDE SHIELD (HSS)**

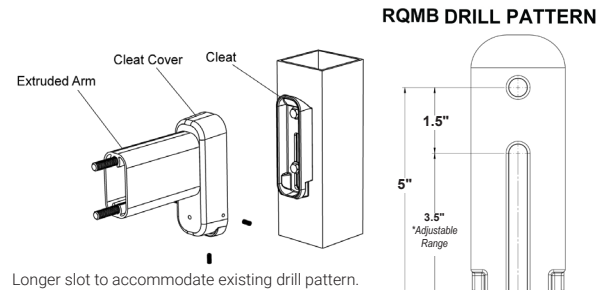


**FRONT SIDE SHIELD (FSS)**

Optional Cast Aluminum Bracket designed for quick mounting on Direct Square or Round Poles. Cleat mounts directly to pole for easily hung fixtures.



**QUICK MOUNT BRACKET (QMB)  
DIRECT POLE (DP6/DP11)**



Longer slot to accommodate existing drill pattern.

**RETROFIT QUICK MOUNT BRACKET (RQMB)**