

PRIME 4" LED ARCHITECTURAL ROUND FLANGED DOWNLIGHT FOR 6" TECHZONE® CEILINGS (SILHOUETTE®, SUPRAFINE®, INTERLUDE®, OR PRELUDE®) BY ARMSTRONG®



USE OF PRODUCT

The 4" PRIME Architectural Series for use in 6" TechZone Ceilings allows for a seamless installation and integration of luminaires within either the Silhouette®, Suprafine®, Interlude®, or Prelude® ceiling types offered by Armstrong®. Available in Downlight, Wall Wash, and Adjustable in an assortment of finishes in round or square flanged trims.

LED ENGINE

LED engine available with CREE LEDs in 2700K, 3000K, 3500K, or 4000K in standard 93+ CRI. 2 Step MacAdam ellipse allows for color consistency between fixtures. LED mounted to aluminum heat sink for maximum life output and thermal management. LED engine is accessible from below ceiling.

FRAME CONSTRUCTION

NonIC housing constructed from 20 gauge cold rolled steel. Junction box with ½" knockouts. Integrated mounting brackets that will snap directly into 6" Techzone® Ceiling grids. Compatible with the following series: Silhouette®, Suprafine®, Interlude®, or Prelude®

OPTICAL LENS & FILTERS (Field Replaceable)

Field replaceable optical lens available in 18°, 30°, 50° and 80°. Easily achieve narrow spot to wide flood beam pattern. Accepts up to 2 filters.

DIMMING

Available in 8 driver selections. (ID) Standard all-inclusive ELV(120V), Triac(120V), and 0-10V(120-277V) dimming driver called Intelligent Drive, 120-277V. (PEQ0) Lutron Hi-Lume Premier Ecosystem 0.1% w/soft on, fade to black dimming, 120-277V. (LDE1) Lutron Hi-Lume 1% Ecosystem with soft on, fade to black dimming, 120-277V. (L3DA) Hi-Lume 1% EcoSystem/3-Wire L3D Driver (EEI) eldoLED Eco 1% Dim (0-10V), 120-277V. (EDIO) eldoLED Solo 0.1% Dim(0-10V), 120-277V. (EDID) eldoLED Solo 0.1% Dim(DALI), 120-277V. Driver accessible from below ceiling.

THERMAL MANAGEMENT

Ambient temperatures at fixture location should not exceed -20° to 40°C.

TRIM

Die cast trim. Consult factory for made to order finishes.

EMERGENCY BATTERY

Optional emergency battery available for a minimum of 90 minutes with Remote test switch in 800 delivered lumens.

LABELS/COMPLIANCE/WARRANTY

-CSA listed for US and Canada
-Dry/Damp/Wet location rated
-Energy Star
-5 year limited warranty



ORDERING INFORMATION

RPA

Aperture Size Lumens Color Temperature Voltage Dimming Optical Lens Filter Housing Type Aperture Options

| Series | Aperture Size | Lumens | Color Temperature | Voltage | Dimming | Optical Lens | Filter |
|--------------|---------------|---------------|-------------------|---------------|---|--------------|--------------------|
| RPA | 4 - 4" | 10L - 1055 lm | 27 - 2700K | UNV - 120-277 | ID ¹ - Standard all-inclusive ELV, Triac, and 0-10V dimming driver (Intelligent Drive) | 18 - 18° | None - Leave blank |
| PRIME Series | | 12L - 1250 lm | 30 - 3000K | 120 - 20V | PEQ0 - Lutron Hi-Lume Premier Ecosystem 0.1% w/ soft on, fade to black dimming | 30 - 30° | F - Frosted filter |
| | | 16L - 1645 lm | 35 - 3500K | 347 - 347V | LDE1 ² - Lutron Hi-Lume 1% Ecosystem with soft on, fade to black dimming | 50 - 50° | H - Honey comb |
| | | 21L - 2170 lm | 40 - 4000K | | LTE ² - Lutron Hi-Lume 1% 2-wire | 80 - 80° | S - Solite filter |
| | | 24L - 2495 lm | | | L3DA - Hi-lume 1% EcoSystem/3-Wire L3D Driver | | L - Linear filter |
| | | 31L - 3105 lm | | | EEI ² - eldoLED Eco 1% Dim (0-10V) | | |
| | | 34L - 3475 lm | | | EDIO ^{2,3} - eldoLED Solo 0.1% Dim (0-10V) | | |
| | | 40L - 4030 lm | | | EDID ^{2,3} - eldoLED Solo 0.1% Dim (DALI) | | |

| Housing Type | Aperture | Options |
|---------------------------|------------------------------|--|
| TZ6 - 6" TechZone Ceiling | RFD - Round Flange Downlight | ER8 ² - Emergency battery with remote switch (800 Lumens) |

TRIM ORDERING INFORMATION

| Aperture Size / Shape / Trim Type / Style | Bevel / Flange Finish |
|---|---|
| 4RFO - 4" Round Flange Open | W-W - White bevel / white flange H-W - Haze bevel / white flange B-B - Black bevel / black flange H-H - Haze bevel / Haze flange S-S - Specular clear bevel / Specular clear flange S-W - Specular clear bevel / white flange WE-WE - Wheat bevel / wheat flange MTO - Made to order |

Notes

- Intelligent Drive is the standard driver.
- Ceiling access required.
- Must specify logarithmic or inear eldoLED driver.

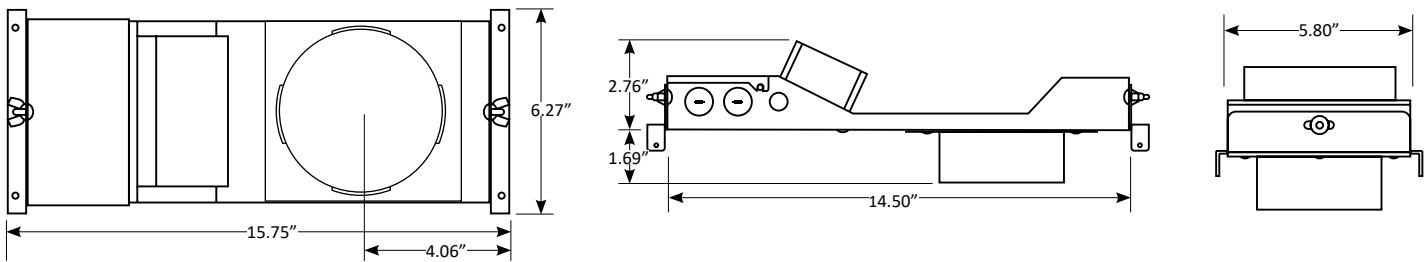
PRIME 4" LED ARCHITECTURAL ROUND FLANGED DOWNLIGHT FOR 6" TECHZONE® CEILINGS
(SILHOUETTE®, SUPRAFINE®, INTERLUDE®, OR PRELUDE®) BY ARMSTRONG®

LUMEN CHART

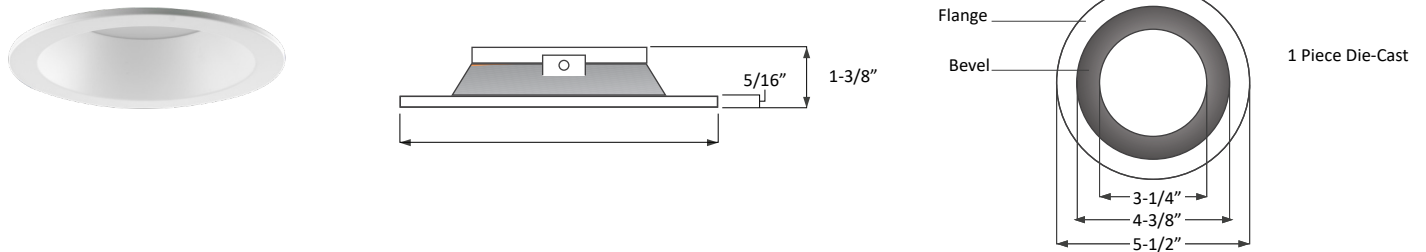
| Wattage | Delivered Lumens | Voltage | CRI |
|---------|------------------|------------|-----|
| 11W | 1055 lm | 120 - 277V | 93+ |
| 16W | 1250 lm | 120 - 277V | 93+ |
| 20W | 1645 lm | 120 - 277V | 93+ |
| 30W | 2170 lm | 120 - 277V | 93+ |
| 31W | 2495 lm | 120 - 277V | 93+ |
| 38W | 3105 lm | 120 - 277V | 93+ |
| 45W | 3473 lm | 120 - 277V | 93+ |
| 58W | 4030 lm | 120 - 277V | 93+ |

*Above chart, ordering information, and IES File name reflect delivered lumens based 3000K and 30° optical lens.
**Lumens will vary based on CCT, optical lens, and bevel finish.

HOUSING DIMENSION



TRIM DIMENSION



MODULE/HEATSINK, LED HOLDER & FILTER DIMENSION

