

ARCHITECTURAL PENDANT



USE OF PRODUCT

The Elevate Architectural Pendant Series offers a point source solution that is available in a double gimbal or single gimbal with retractable yoke. Offered in an assortment of lumen, color temperature, beam angle, and filter options that may be modified in the field. Modules are available in bevel, regress, or snoot appearance.

LED MODULE

Cree LEDs in 2700K, 3000K, 3500K, or 4000K in standard 93+ CRI. 2 Step MacAdam ellipse allows for color consistency between fixtures. LED mounted to aluminum heat sink for maximum life output and thermal management. LED module is field replaceable.

FRAME CONSTRUCTION

Constructed from 20 gauge cold rolled steel with powder coat finish.

ADJUSTMENT

Double gimbal adjustment, (25° X 25° Tilt) or single gimbal (45°) with retractable yoke and 360° rotation. both mechanisms are lockable.

OPTICS

Field replaceable TIR optics available in 12°, 22°, 27°, 35°, and 45°. Easily achieve narrow spot to wide flood beam pattern. Option for frosted, honeycomb, or solite filter (2 maximum).

DIMMING

Available in 8 driver selections. (ID) Standard all-inclusive ELV, Triac, and 0-10V dimming driver called Intelligent Drive, 120-277V. (PEQ0) Lutron Hi-Lume Premier Ecosystem 0.1% w/soft on, fade to black dimming, 120-277V. (LDE1) Lutron Hi-Lume 1% Ecosystem with soft on, fade to black dimming, 120-277V. (LTE) Lutron Hi-Lume 1% 2-wire, 120V. (L3DA) Hi-lume 1% EcoSystem/3-Wire L3D Driver (EEI) eldoLED Eco 1% Dim (0-10V), 120-277V. (EDIO) eldoLED Solo 0.1% Dim(0-10V), 120-277V. (EDID) eldoLED Solo 0.1% Dim(DALI), 120-277V. All drivers are integral and are field replaceable.

THERMAL MANAGEMENT

Ambient temperatures at fixture location should not exceed -20° to 40°C.

MOUNTING

Mounts directly to junction box.

LABELS/COMPLIANCE/WARRANTY

- CSA Listed for US and Canada
- 5 Year limited warranty



ORDERING INFORMATION

RPM

Housing Size Mounting types Module Configuration Module Mechanism Lumens Per head Color Temp. Voltage Dimming Optical Lens Filter Module Type Frame Finish Module Finish

| Series | Housing Size | Mounting Types | Module Configuration | Module Mechanism | Lumens Per Head | Color Temperature | Voltage |
|----------------|--------------|------------------|------------------------------------|--|-----------------|-------------------|----------------|
| RPM | M - Medium | P1 - One Pendant | 1 - One module | DG - Double Gimbal | 8L - 890 lm | 27 - 2700K | UNV - 120-277V |
| Elevate Series | | P2 - Two Pendant | 2 - Two module | SY - Single gimbal w/ retractable yoke | 11L - 1175 lm | 30 - 3000K | 120 - 120V |
| | | | 3 - Three module | | 16L - 1650 lm | 35 - 3500K | |
| | | | 4 - Four module | | 21L - 2100 lm | 40 - 4000K | |
| | | | 4S - Four module w/ Square Config. | | | | |
| | | | MTO - Made to order | | | | |

| Dimming | Optical Lens | Filter | Module Type | Frame Finish | Module Finish | Options |
|--|----------------------|--|---------------------------------------|---|---|------------------------|
| ID Standard all-inclusive ELV, Triac, and 0-10V dimming driver (Intelligent Drive) | 12 - 12° 22 - 22° | None - Leave blank F - Frosted filter | B - Bevel R - Regress S - Snoot | B - Black W - White S - Silver MTO - Made to order | B - Black W - White S - Silver MTO - Made to order | EM - Emergency Battery |
| PEQ0 Lutron Hi-Lume Premier Ecosystem 0.1% w/soft on, fade to black dimming | 27 - 27° 35 - 35° | H - Honeycomb S - Solite filter | | | | |
| LDE1 Lutron Hi-Lume 1% Ecosystem with soft on, fade to black dimming | 45 - 45° | | | | | |
| LTE Lutron Hi-Lume 1% 2-wire | | | | | | |
| L3DA Hi-lume 1% EcoSystem/3-Wire L3D Driver | | | | | | |
| EEI eldoLED Eco 1% Dim (0-10V) | | | | | | |
| EDIO eldoLED Solo 0.1% Dim (0-10V) | | | | | | |
| EDID eldoLED Solo 0.1% Dim (DALI) | | | | | | |

Note
1. Consult with factory

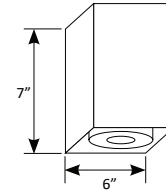
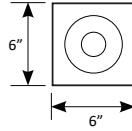
LUMEN CHART

| Wattage | Delivered Lumens | Voltage | CRI |
|---------|------------------|------------|-----|
| 10W | 890 lm | 120 - 277V | 93+ |
| 14W | 1175 lm | 120 - 277V | 93+ |
| 20W | 1650 lm | 120 - 277V | 93+ |
| 30W | 2100 lm | 120 - 277V | 93+ |

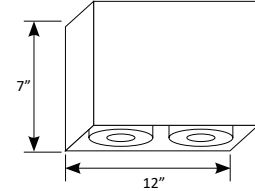
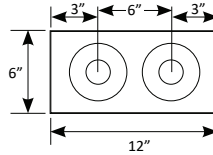
*Above chart, ordering information, and IES File name reflect delivered lumens based 3000K and 30° optical lens.
 **Lumens will vary based on CCT, optical lens, and bevel finish.

DIMENSION/CONFIGURATION

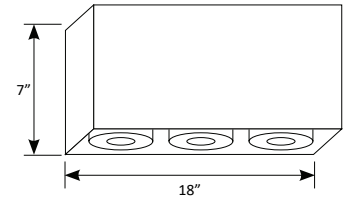
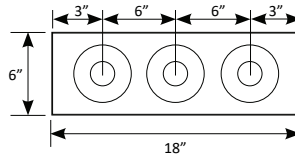
One module



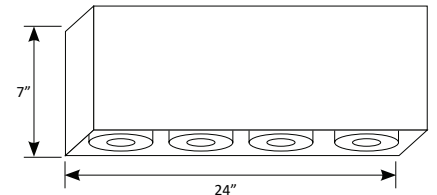
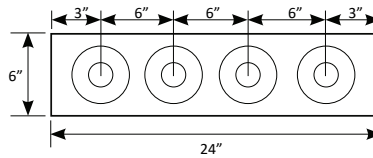
Two module



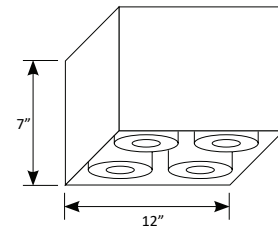
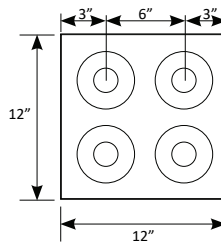
Three module



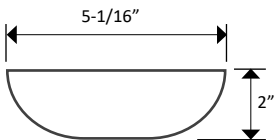
Four module



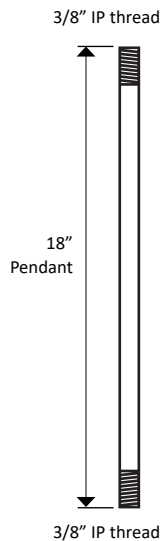
Four module in Square config.



PENDANT DIMENSION

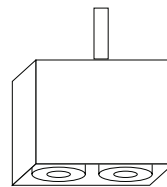


Pendant Mount Canopy

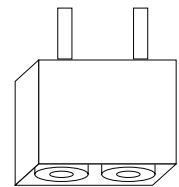


PENDANT TYPE

P1 - One Pendant



P2 - Two Pendant

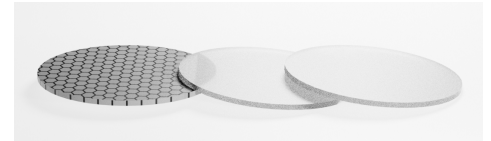


OPTICAL LENS



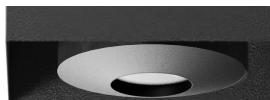
12°, 22°, 27°, 35°, 45°

FILTERS

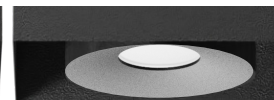


H - Honey comb F - Frosted filter S - Solite filter

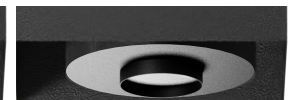
MODULE TYPE



B - Bevel



R - Regress



S - Snoot