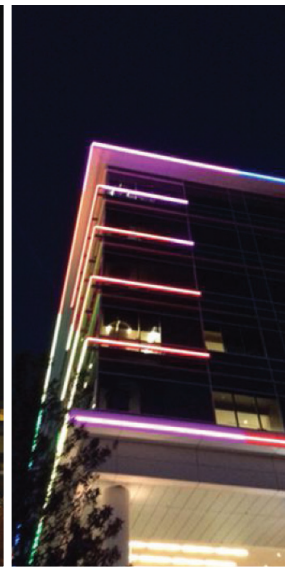


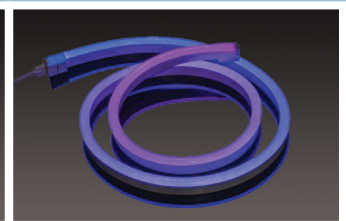
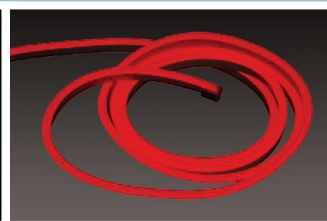
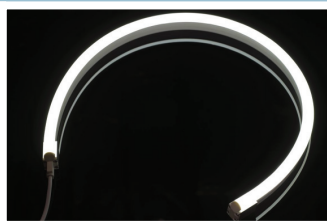


TPR ENTERPRISES, LTD.®

Westflex® LED Neon



Westflex® LED Neon is an excellent alternative to conventional Neon. It is durable, flexible and energy efficient. Westflex® Neon is an excellent choice for outlining buildings, bridges, etc. It provides you with endless possibilities creating curved and straight lines of light. Westflex® LED Neon is IP65 rated, ETL listed and UV resistant. This product uses our patented Westflex® technology and is available in Solid Colors RGB, RGBW, RGB Pixel Addressable and multiple color temperatures of White. Westflex® LED Neon should be your first choice in Neon Replacement.



Westflex® LED Neon Family of Products

PRODUCT SPECIFICATIONS*

NOTE:

- For **Rounded Top** use **-R** after the Color or Color Temp.
- For **Flat Top** use **-F** after the Color or Color Temp

Example: **TPR-FL-NEON-2700K-F** (Standard Bend, Flat Top, 2700K)



MODEL	COLOR TEMP: RGB/RGBW	WATTS	LUMENS	CUT LENGTH	DIM/CONTROL
STANDARD BEND					
White Light-					
TPR-FL-NEON-2700K	2700K	4W/ft	140lm/ft	100mm	0-10V/MLV
TPR-FL-NEON-3000K	3000K	4W/ft	145lm/ft	100mm	0-10V/MLV
TPR-FL-NEON-4000K	4000K	4W/ft	150lm/ft	100mm	0-10V/MLV
TPR-FL-NEON-5000K	5000K	4W/ft	160lm/ft	100mm	0-10V/MLV
Solid Colors-					
TPR-FL-NEON-B	Blue	4W/ft	100lm/ft	100mm	0-10V/MLV
TPR-FL-NEON-G	Green	4W/ft	80lm/ft	100mm	0-10V/MLV
TPR-FL-NEON-R	Red	2W/ft	64lm/ft	167mm	0-10V/MLV
TPR-FL-NEON-O	Orange	2W/ft	72lm/ft	167mm	0-10V/MLV
TPR-FL-NEON-P	Pink	4W/ft	90lm/ft	100mm	0-10V/MLV
RGB/RGBW-					
FL-NEON-RGB	RGB	4W/ft	140lm/ft	100mm	DMX
TPR-FL-NEON-RGBW	RGBW (4000K)	4.4W/ft	240lm/ft	100mm	DMX
TPR-FL-NEON-RGBW	RGBW (3000K)	4.4W/ft	230lm/ft	100mm	DMX
TPR-FL-NEON-RGB-CH	RGB Chasing	4.4W/ft	140lm/ft	125mm	DMX/SPI
TPR-FL-NEON-RGBW-CH	RGBW Chasing	4.4W/ft	240lm/ft	125mm	DMX/SPI
SIDE BEND					
White Light-					
TPR-FL-NEON-2700-SB	2700K	4W/ft	140lm/ft	55.6mm	0-10V/MLV
TPR-FL-NEON-3000-SB	3000K	4W/ft	145lm/ft	55.6mm	0-10V/MLV
TPR-FL-NEON-4000-SB	4000K	4W/ft	150lm/ft	55.6mm	0-10V/MLV
TPR-FL-NEON-5000-SB	5000K	4W/ft	160lm/ft	55.6mm	0-10V/MLV
Solid Colors-					
TPR-FL-NEON-B-SB	Blue	4W/ft	100lm/ft	55.6mm	0-10V/MLV
TPR-FL-NEON-G-SB	Green	4W/ft	80lm/ft	55.6mm	0-10V/MLV
TPR-FL-NEON-R-SB	Red	2W/ft	64lm/ft	83.3mm	0-10V/MLV
TPR-FL-NEON-O-SB	Orange	2W/ft	72lm/ft	83.3mm	0-10V/MLV
RGB/RGBW-					
FL-NEON-RGB	RGB	4W/ft	140lm/ft	100mm	DMX
TPR-FL-NEON-RGB-CH	RGB Chasing	4.4W/ft	140lm/ft	125mm	DMX/SPI

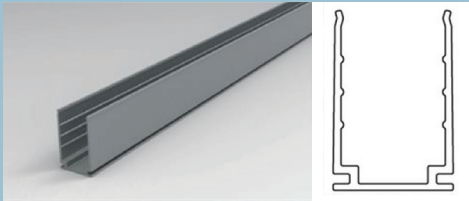
* Specifications subject to change without notice.

Westflex® LED Neon

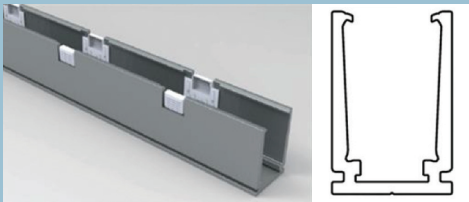
ACCESSORIES

The following items are necessary to make a complete Westflex® LED Neon system. All versions of Neon use either Mounting Clips for curved runs or Mounting Track for straight runs. Neon fixtures also have Leads and End Caps according to the following rules. These rules apply to Round Top, Flat Top (Standard Bend) and Side Bend Neons.

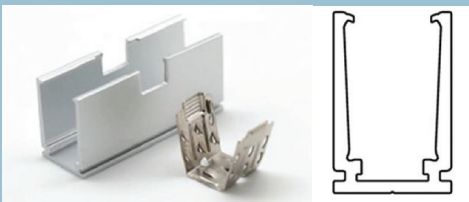
Whites and Solid Color Neon- Fixtures up to 32' have an FC1 lead at one end, and End Cap at the other. Fixtures from 33'-64' have an FC1 lead at one end, and an FC2 lead at the other end. RGB and RGBW Neon- Fixtures up to 21' have an FC1 lead at one end and an End Cap at the other. Fixtures from 22'-42' have an FC1 lead at one end and an FC2 lead at the other. Chasing Neon- Fixtures are made up to 45' with an FC1 lead at one end and End Cap at the other.



Interior Mounting Channel
TPR-FL-NEON-MT



Exterior Mounting Channel
TPR-FL-NEON-MTSL

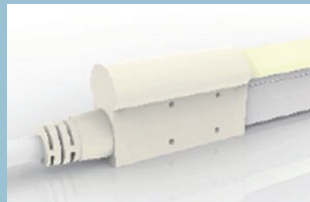


Mounting Clip
TPR-FL-NEON-MC

FC1/FC2 LEADS AND EC END CAPS



Bottom Feed
TPR-FL-NEON-FC1-BF



End Feed
TPR-FL-NEON-FC1-EF



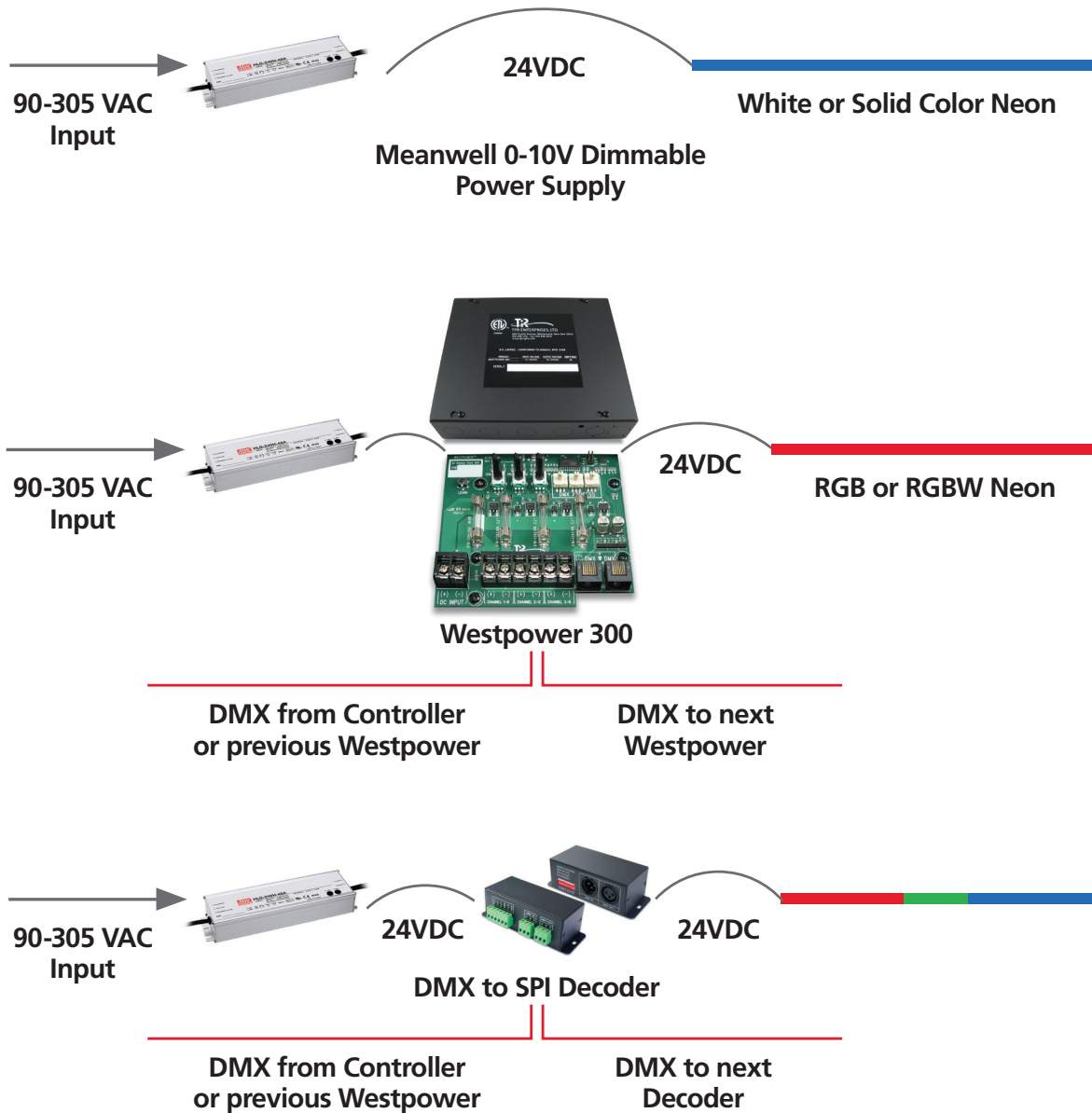
Side Feed
TPR-FL-NEON-SF

Westflex® LED Neon

POWER SUPPLIES AND CONTROLS

The following items are necessary to make a complete Westflex® LED Neon system. White Light and Solid Colors need Power Supplies only, and we offer Line Voltage Dimmable and 0-10V Dimmable Power Supplies. RGB and RGBW Neon require Power Supplies, Westpower® 300 DMX Dimmer Packs and some form of DMX Controller. The Chasing (Pixel) versions of Neon require Power Supplies, DMX to SPI Decoders and a DMX Controller.

THE FOLLOWING DIAGRAMS SHOW THESE COMPONENTS.



Westflex® LED Neon

POWER SUPPLIES AND CONTROLS CONTINUED

THE FOLLOWING ARE THE POWER SUPPLIES AND CONTROLS WE OFFER.

Each component is State-of-the-Art and extremely reliable.



60W Line Voltage Dimmable Power Supply.



0-10V Dimmable Power Supply. Available in 12VDC and 24VDC. 40W, 80W, 120W, 240W and 320W.



Westpower® 300 DC Dimmer. This acts as a DMX data interface for up to 300W of Power when driving RGB or RGBW fixtures. The Westpower® is capable of both 12VDC and 24VDC.



UX8 DMX Wall Pad Controller. Pre-programmed for several effects or you can set solid colors with the wheel.



STICK2 DMX programmable Wall Pad Controller.
128 DMX Channels.



STICK KE2 programmable Wall Pad Controller.
1024 DMXChannels.



UE7 programamable Controller. 1024 DMX Channels. These can be stacked for up to 20 Universes of control via Ethernet.



DMX 6 Way Splitter. Indoor Rated, 120VAC.

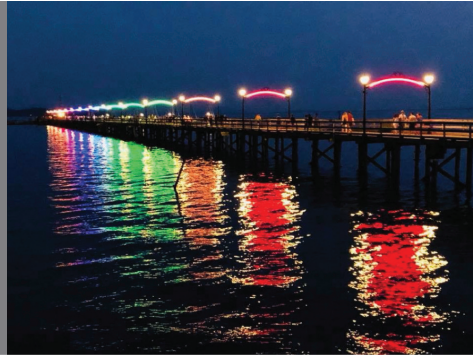


Wireless DMX Transceiver. Outdoor rated, 120VAC.



Ethernet to DMX Splitter. Indoor rated, 120VAC.
Capable of multi-universe addressing.

Westflex® LED Neon GALLERY



White Rock Pier, White Rock BC.
RGB Neon



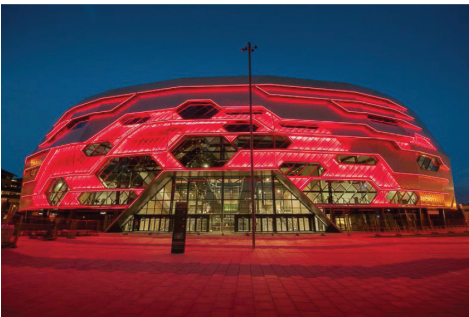
Calhouns Restaurant
Marysville, TN
Neon Solid Color



Adelaide Oval.
White Neon



Commercial Building
Slovakia
Neon Solid Color



First Direct Arena, LEEDS UK.
RGB Neon