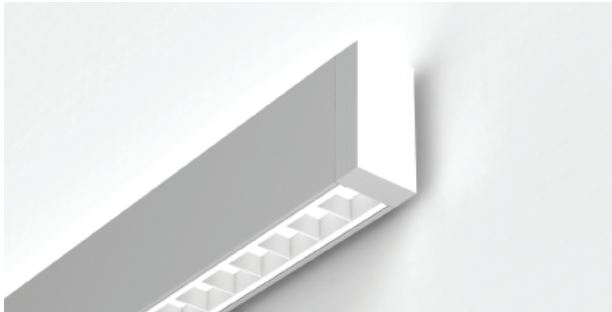


QuadraCel™ Wall Mount Series 2

Catalog Number	Type
Project Name	



ADA Compliant

S P E C I F I C A T I O N S

Housing

One-piece .070" thick extruded aluminum. Die-cast aluminum end caps are secured with no visible fasteners. Standard lengths are nominal 2', 3', 4', 6' 8' and 12'. Provisions may be made for patterns and continuous rows of any length.

Finish

Standard and premium finishes are baked powder coat electrostatically applied (2.0 mil minimum thickness) to assure aesthetics and durability.

Indirect Optical Controls

- (FDC) Frosted 100% polycarbonate dust cover
- (OP) Open Top

Direct Optical Controls

(PBXX) Snap-in baffle constructed of .030" thick aluminum with nominal 1.25" X 1.25" square cells, and includes a .040" thick acrylic overlay.

Standard Baffle Finishes:

- (PBMW) Matte White
- (PBFS) Full Specular - 'Mirro'
- (PBSS) Semi-Specular

Custom Baffle Finishes:

- (PBCC) Custom Finish - Baked Powder Coat (Contact Factory)

Reflector/Heat Sink

- Indirect - .040" thick die-formed aluminum finished with a high reflectance white enamel.
- Direct - .040" thick die-formed aluminum finished with a high reflectance white enamel.

Driver

Osram-Sylvania "Optotronic" power supply is UL/CUL recognized, 0-10V dimming available, 120-277 universal voltage. 347V is available. Contact factory for optional drivers.

Light Engine (Upper Aperture)

LED light source available for 3000K, 3500K, and 4000K CCT, in high and medium light outputs, and 80 or 90 CRI.

Light Engine (Lower Aperture)

Mid-power LED module with quad-emitter arrangement centered over each baffle cell providing optimum uniformity and performance. Available in 3000K, 3500K, and 4000K CCT, and 80 or 90 CRI.

Standard combined outputs (upper & lower) using 80 CRI and Matte White baffles:

HO/HO -High Output (Up/Dn) - Open Top

*6714 Total Del'd Lms. at 60 System Watts

MO/MO -Medium Output (Up/Dn) - Open Top

*4413 Total Del'd Lms. at 37 System Watts

(*All values per 4' using 4000K LED modules)

Wiring

All fixtures intended for continuous rows are provided with factory installed quick-connect wiring.

Circuitry

All fixtures are factory pre-wired for a single circuit. Provision for multiple switching/circuiting is optional.

Integral Controls

Contact factory for control by Occupancy Sensors, Photo Controls and Daylight Harvesting.

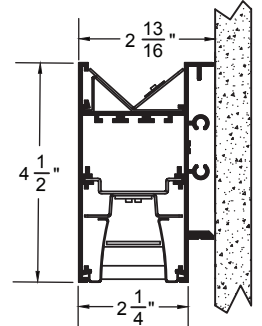
Certification

Fixtures are ETL listed for use in 'Dry or Damp Applications.' Conforms to UL Standard #1598 and to CAN/CSA Standard #C22.2No.250.0.

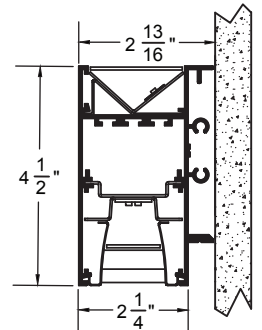


QP2-Indirect-Asym./ Direct - with Baffle

2 1/4" x 4 1/2" Indirect-Asymmetric/ Direct Wall Mount - with Baffle



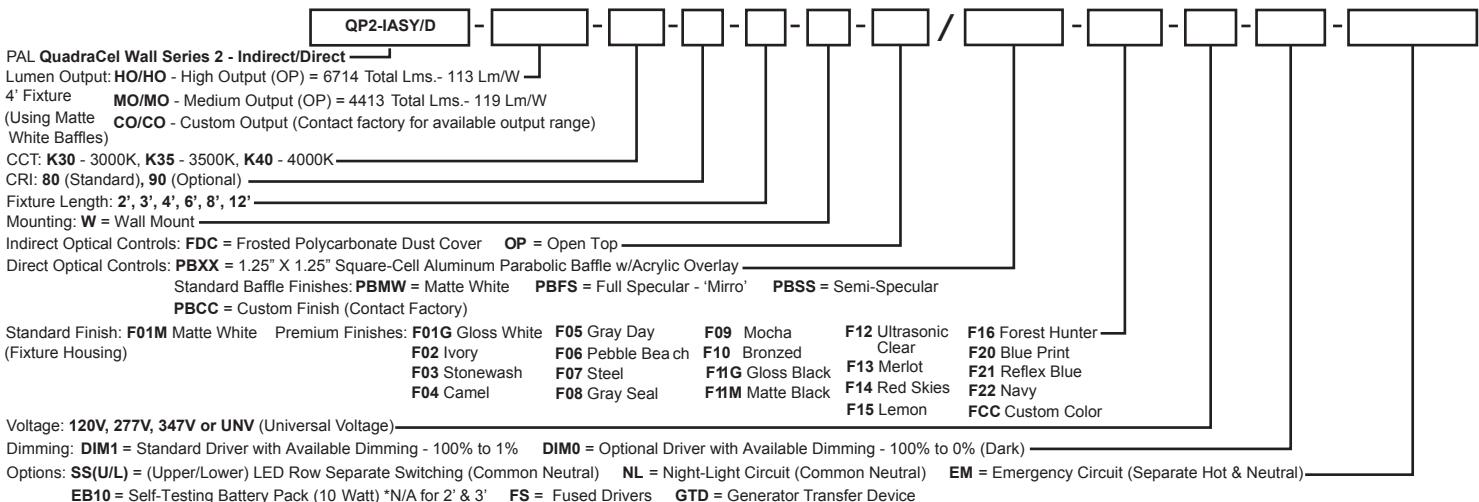
QP2-IASY/D-HO/HO-OP/PBXX
QP2-IASY/D-MO/MO-OP/PBXX
Shown with Open Top



QP2-IASY/D-HO/HO-FDC/PBXX
QP2-IASY/D-MO/MO-FDC/PBXX
Shown with Frosted Dust Cover

*Due to continued advancement in LED technology, lumen performance is subject to change. Please visit our website for the most up-to-date information.

Sample Catalog Number: **QP2-IASY/D - HO/HO - K40 - 80 - 4 - W - OP / PBMW - F01M - 120 - DIM1 - OPTIONS**



Wall - Indirect Asymmetric/Direct

QP2-IASY/D-HO/HO-K40-OP/PBMW



Indirect-Asym./Direct - High Output Up & Down

Open Aperture Up/Parabolic Baffle & Overlay Down

Catalog Number: QP2-IASY/D-HO/HO-K40-80-4'-W-OP/PBMW-120

Report Number: #LLIA001418-005.ies

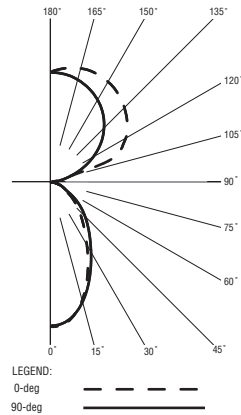
Luminaire Description: Extruded Aluminum Housing with White Alum. Reflectors, Open Top and Parabolic Baffle Down

LED Module: Multiple White Low-Power Light Emitting Diodes (LEDs) in a precise lay-out.

Total Luminaire Efficacy = 112.5 Lm/W

Color Rendering Index (CRI) = 83

60 % Up 40 % Down



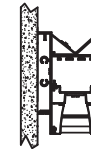
ZONAL LUMEN SUMMARY

Zone	Lumens	%Fixture
0- 30	1178	17.5
0- 40	1686	25.1
0- 60	2406	35.8
0- 90	2709	40.3
90- 120	741	11.0
90- 130	1405	20.9
90- 150	2864	42.6
90- 180	4005	59.7
0- 180	6714	100.0

CANDELA DISTRIBUTION

	0.0	22.5	45.0	67.5	90.0
0	1927	1927	1927	1927	1927
5	1904	1901	1895	1890	1890
25	1156	1167	1204	1236	1248
45	513	505	522	578	631
65	178	178	180	183	186
85	20	21	21	21	21
90	1	1	1	1	1
95	7	6	7	7	17
115	1019	962	816	662	476
135	1389	1355	1267	1158	993
155	1564	1552	1491	1411	1319
175	1524	1518	1501	1481	1464
180	1474	1474	1474	1474	1474

QP2-IASY/D-MO/MO-K40-OP/PBMW



Indirect-Asym./Direct - Medium Output Up & Down

Open Aperture Up/Parabolic Baffle & Overlay Down

Catalog Number: QP2-IASY/D-MO/MO-K40-80-4'-W-OP/PBMW-120

Report Number: #LLIA001418-006.ies

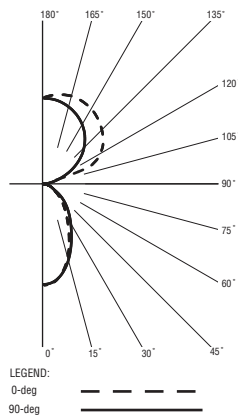
Luminaire Description: Extruded Aluminum Housing with White Alum. Reflectors, Open Top Up and Parabolic Baffle Down

LED Module: Multiple White Low-Power Light Emitting Diodes (LEDs) in a precise lay-out.

Total Luminaire Efficacy = 118.7 Lm/W

Color Rendering Index (CRI) = 83

62 % Up 38 % Down



ZONAL LUMEN SUMMARY

Zone	Lumens	%Fixture
0- 30	724	16.4
0- 40	1036	23.5
0- 60	1478	33.5
0- 90	1666	37.8
90- 120	508	11.5
90- 130	963	21.8
90- 150	1965	44.5
90- 180	2747	62.2
0- 180	4413	100.0

CANDELA DISTRIBUTION

	0.0	22.5	45.0	67.5	90.0
0	1184	1184	1184	1184	1184
5	1168	1167	1164	1161	1161
25	706	713	736	757	767
45	313	309	319	354	387
65	109	109	110	112	114
85	12	13	13	13	14
90	1	1	2	1	1
95	5	5	4	5	11
115	698	658	558	453	327
135	953	929	869	795	682
155	1074	1065	1023	969	905
175	1046	1042	1030	1017	1005
180	1011	1011	1011	1011	1011

For more information, visit our website at www.pal-lighting.com



Precision Architectural Lighting 4830 Timber Creek Drive Houston, Texas 77017
Tel 713.946.4343 Fax 713.946.4441 www.pal-lighting.com



Made in America