



T898LED

LED ROUND CUTOFF BOLLARD

JOB INFORMATION

Type: _____
 Catalog No: _____
 Project Name: _____
 Comments: _____
 Prepared by: _____

T898LED

FEATURES

USE OF PRODUCT

The intended use of this product is for pathways, parking lots, plazas, entrance ways, parks, and as landscape accents.

HOUSING

Extruded aluminum housing with flush mounting base and vandal resistant screws.

FINISH

Weather resistant, matt-finished powdercoat process for advanced protection in severe environments over a precise chromate conversion coating. Available in standard dark polyester bronze finish for impact, corrosion, and UV resistance. Consult factory for made to order architectural finishes.

OPTICS

White UV-stabilized polycarbonate cone reflector was designed for maximum photometric efficiency and optimum light distribution. Available in Clear or Frosted polycarbonate lens for increased UV-stabilize vandal resistances. One-piece silicon gasket prohibits entrance of outside contaminants. Provides 360° of low level lighting.

LED

High output LEDs offer a minimum estimated operating life of 50,000 hours in 3000K, 4000K(standard) with CRI>80. LEDs placed on high performance aluminum heatsink for reduced junction temperatures and extended life.

DRIVER

Durable and long lasting LED driver operates at 120-277V and boasts a 90% power factor at 50 to 60 Hz with 0-10V Dimming Constant Current. Driver protections includes: Output open load, over-current and short-circuit, and over-temperature with auto recovery. -30°C Min Temp. to 40°C Max Temp.

MOUNTING

- Mounting kit with anchor bolts are included.
- Internal ballast tray for easy maintenance.
- Bollard must be mounted on a concrete base. (Supplied by others)

LISTINGS/COMPLIANCE

- CSA-Suitable for wet locations

GFCI OUTLET



BOLLARD RETROFIT BASE KIT



LENS



ORDERING INFO

SERIES	HEIGHT	WATTAGE	VOLTAGE	COLOR TEMPERATURE	LENS	FINISH	OPTIONS
T898LED	35 - 35-3/4"	16 - 16W/1525lm	UNV - 120V-277V	30 - 3000K	C - Clear	BZ ² - Bronze	GO - GFCI Outlet
	MTO ¹ - Made to order	23 - 23W/2135lm	347 - 347V	40 - 4000K	F - Frosted	MTO ³ - Made to order	BRBK - Bollard retrofit base kit
		34 - 34W/3202lm	480 - 480V			MGTO ³ - Marin grade made to order	EM - Emergency battery
							CEM - Cold pack emergency battery

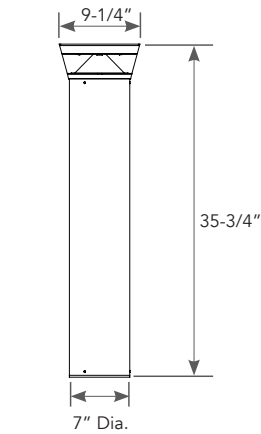
Notes

1. Consult factory for height, Minimum height 30"
2. Standard.
3. RAL number required.

T898LED

LED ROUND CUTOFF BOLLARD

DIMENSIONS



B.U.G. RATING

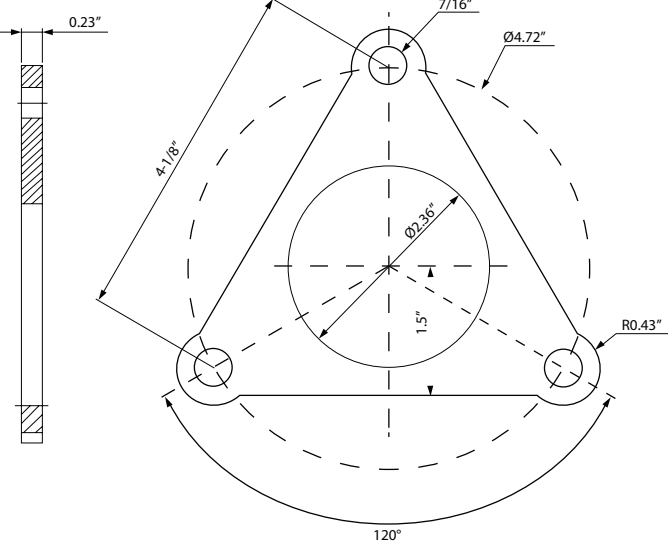
Clear Lens B.U.G. Rating

Watts	Lumens	B-U-G Rating
16W	1525lm	B0-U1-G1
23W	2135lm	B1-U2-G1
34W	3202lm	B1-U2-G1

Frosted Lens B.U.G. Rating

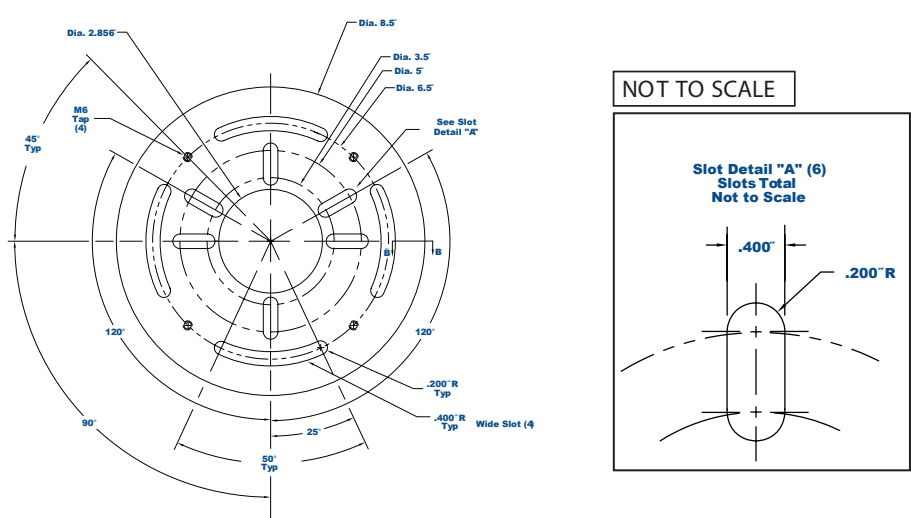
Watts	Lumens	B-U-G Rating
16W	975lm	B1-U3-G1
23W	1365lm	B1-U3-G1
34W	2047lm	B1-U4-G2

NEW CONSTRUCTION PLATE



- Technical Requirements:
1. No cracks, incomplete casting puffing, bubbles, or any perforative defects.
 2. Unspecified chamfer is R2.
 3. Remove glitches and sharp edges.
 4. Draft angle is 1 degree.
 5. Sureface treatment by customer's assignment.

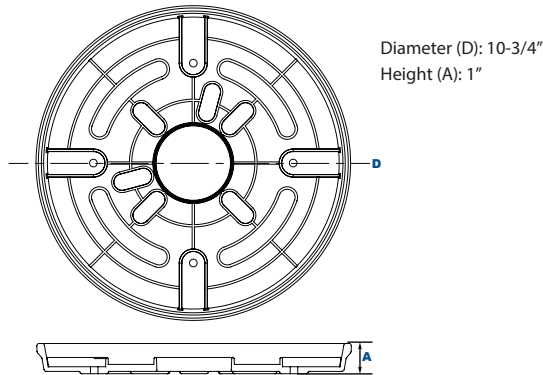
BOLLARD RETROFIT BASE TEMPLATE



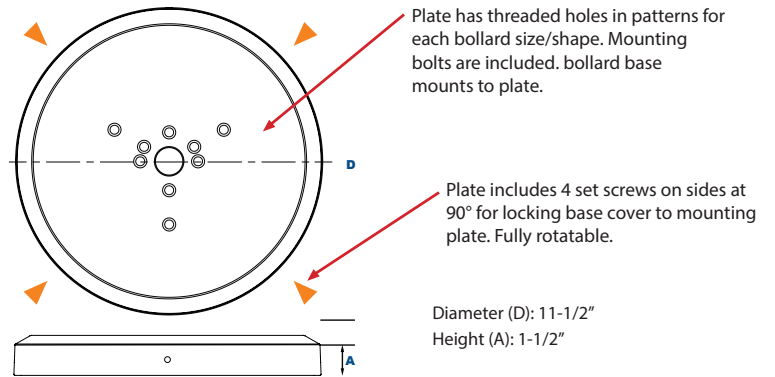
T898LED

LED ROUND CUTOFF BOLLARD

BASE DIMENSIONS



BASE COVER DIMENSIONS



BASE KIT INCLUDES

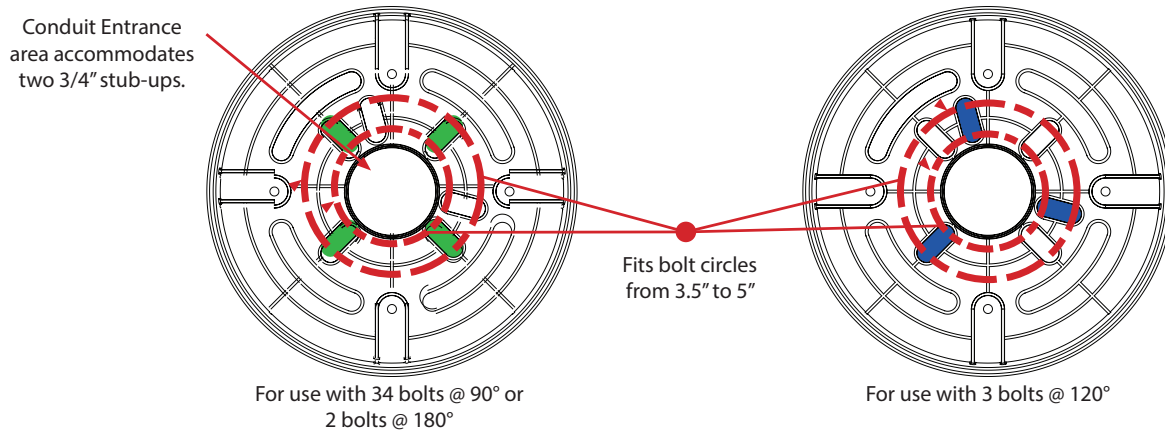
Heavy duty die cast aluminum Anchor Bolt Retrofit Adapter Plate

- Includes slots for existing anchor bolt mounting, 3@120°, 4@90° or 2@180° (3.5" to 5" diameter bolt circle). Slots can accommodate 1/4" to 3/8" diameter anchor bolts.
- Includes large diameter slots for installing field drilled anchors (not included) in the event that the existing anchor bolt pattern does not fit slots, or anchor bolts are damaged or unusable.
- Includes 4 Stainless Steel leveling bolts with two leveling bubbles at 90° to level base prior to mounting new bollard.
- Center conduit entrance hole designed to accommodate two 3/4" PVC conduits.

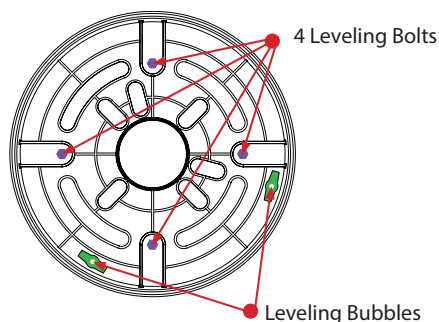
Heavy duty die cast aluminum Bollard Mounting Cover Plate

- Includes threaded holes in patterns to match bollard base mounting plates.
- Stainless Steel bolts for mounting bollard base plate.
- 4 Stainless Steel set screws at 90° for securing the cover plate to the adapter plate. Cover plate can be rotated 360°. Powdercoat finish over chromate conversion coating in Bronze (standard) and available in made to order.

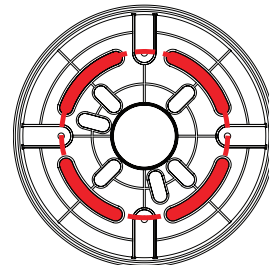
ANCHOR BOLT RETROFIT ADAPTER PLATE BOLT CIRCLES FOR USE WITH EXISTING ANCHOR BOLTS



BASE LEVELING AND LEVELS



CIRCLE FOR DRILLED ANCHORS



6.5" bolt circle for Drilled Anchors. Used when existing anchor bolts do not fit 4-bolt or 3-bolt slot or are damaged. these must be cut off and new drilled anchors installed

T898LED

LED ROUND CUTOFF BOLLARD

PHOTOMETRICS

T898LED
Clear lens

Distance In Units Of Mounting Height
Values Based On 3 Foot Mounting Height
1/2 Maximum Candela Trace Shown As Dashed Curve
(*) = Maximum Candela Point

Photometric Performance

Watts	16W	23W	34W
CCT	Delivered Lumens		
3000K	1,406	1,968	2,952
4000K	1,525	2,135	3,202
BUG Rating	B1-U3-G1	B1-U3-G1	B1-U3-G1

T898LED
Frosted lens

Distance In Units Of Mounting Height
Values Based On 3 Foot Mounting Height

Photometric Performance

Watts	16W	23W	34W
CCT	Delivered Lumens		
3000K	899	1,258	1,888
4000K	975	1,365	2,047
BUG Rating	B1-U3-G1	B1-U3-G1	B1-U4-G2