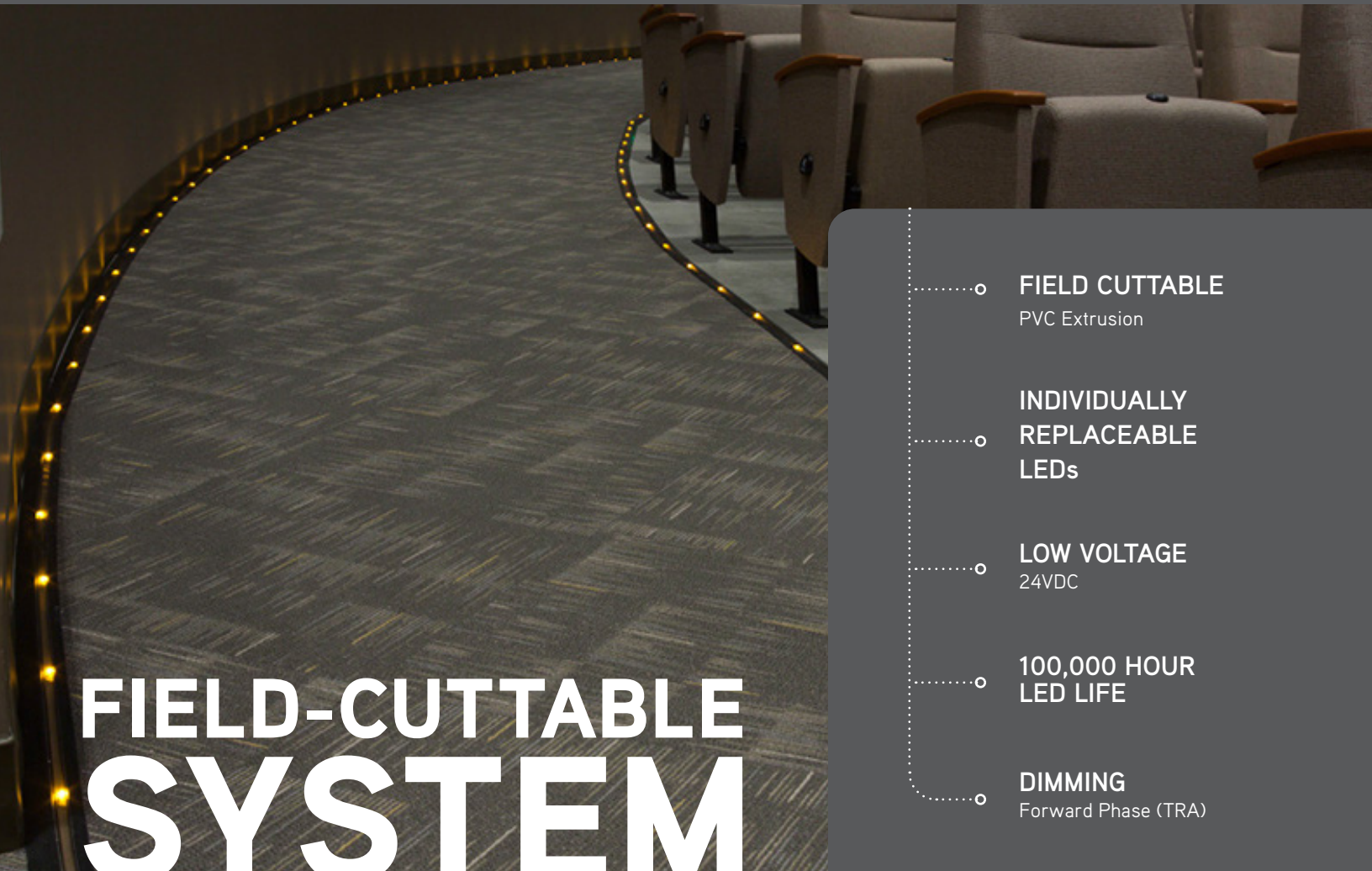


aisleLITE™ SERIES



FIELD-CUTTABLE SYSTEM

- **FIELD CUTTABLE**
PVC Extrusion
- **INDIVIDUALLY
REPLACEABLE
LEDs**
- **LOW VOLTAGE**
24VDC
- **100,000 HOUR
LED LIFE**
- **DIMMING**
Forward Phase (TRA)

aisleLITE™ Series is a field-cutttable system designed to provide a safe environment in low-light-level venues that require aisle, path, or guide lighting for patrons (e.g., school auditoriums, movie theatres, restaurants, hotels, and auditoriums).

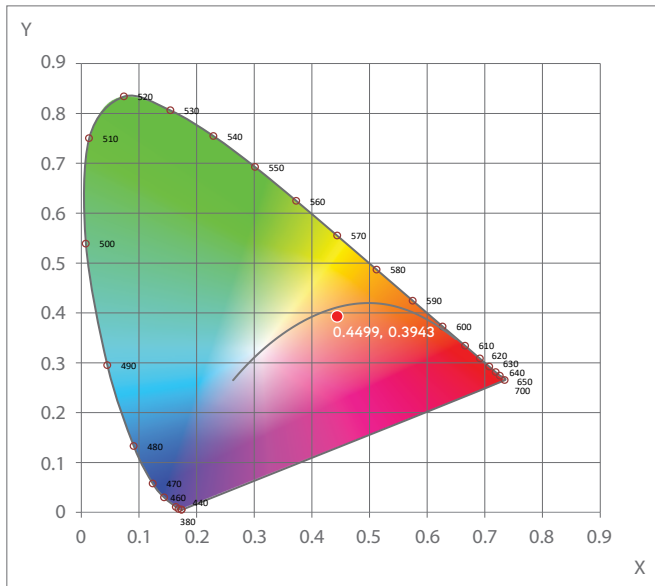


CALI
CALIFORNIA ACCENT LIGHTING INC
Lighting for the Professional Designer

FEATURES AND PERFORMANCE

Our *aisleLITE*, with a variety of spacing and color temperature options, is easy to configure to fit your needs. Its long-life, energy-efficient LEDs ensure a low maintenance installation.

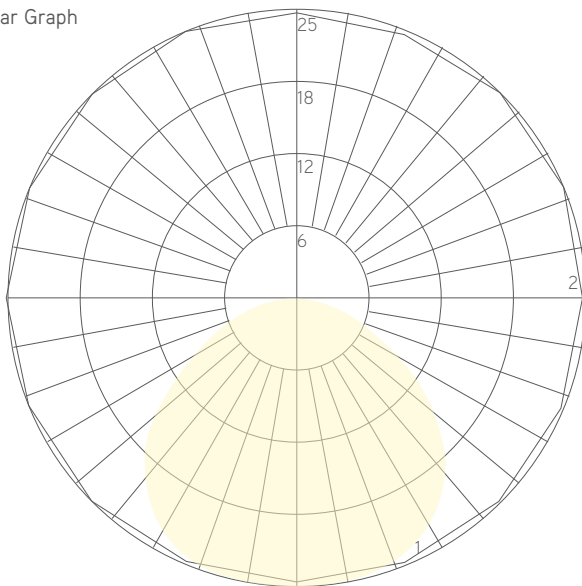
Chromaticity Diagram



LAMP SPECIFICATIONS

LAMP NUMBER	CORRELATED COLOR TEMPERATURE	JA8 COMPLIANT	L70 LED LIFE
3.0K	3000K Warm White	Yes	50,000 hrs.
5.0K	5000K Cool White	No	50,000 hrs.
R	Red (621nm)	No	100,000 hrs.
G	Green (525nm)	No	100,000 hrs.
B	Blue (470nm)	No	100,000 hrs.
A	Amber	No	100,000 hrs.

Polar Graph



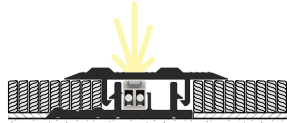
Maximum Candela = 24.55 Located At Horizontal Angle = 0, Vertical Angle = 5
 # 1 - Vertical Plane Through Horizontal Angles (0 - 180) (Through Max. Cd.)
 # 2 - Horizontal Cone Through Vertical Angle (5) (Through Max. Cd.)

FEATURES

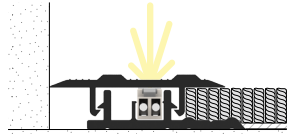
APPLICATIONS	Aisle and Path Lighting
LAMP TYPE	LEDs
LAMP WATTS	0.25W per Lamp
MOUNTING	Adhesive
WEIGHT	0.34 lbs per foot
CONSTRUCTION	PVC Extrusion
LENGTH	Built to Order
FINISH	Matte Black
LISTING	Dry Location Only UL2108, CSA C22.2 #9 UL8750, CSA250
INSTALLATION	Link to Installation Instructions
ELECTRICAL	
DIMMING	Forward Phase, 0-10V, Lutron, DMX, DALI
MAXIMUM LAMPS (Based on 5 Amps)	240
MAXIMUM LAMPS (Based on 4 Amps for Class II)	128
VOLTAGE	24VDC
WIRING	Parallel
SOCKET	Custom
DRIVER	Remote (Sold Separately)
TEMPERATURE RATINGS	Operating / Startup: -20° to 48°C (-4° to 120°F) Storage: -40° to 76°C (-40° to 170°F)

aisleLITE™ LED SERIES

CARPET TO CARPET | CARPET TO WALL EXTRUSIONS

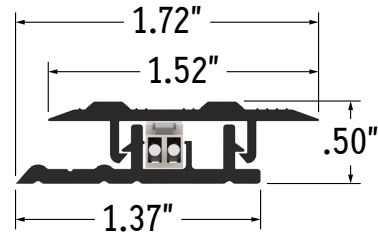
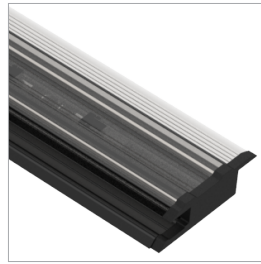


CARPET TO CARPET

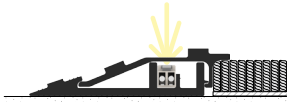


CARPET TO WALL

AIL1700 (PVC Extrusion)

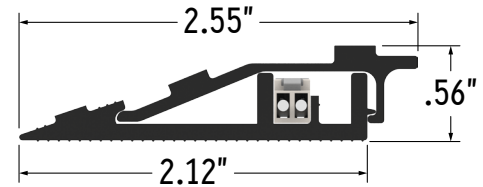
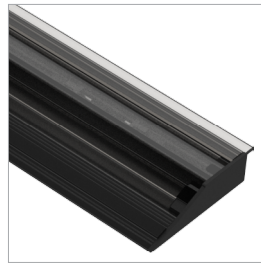


CARPET TO FLOOR EXTRUSION

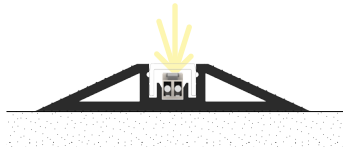


CARPET TO FLOOR

AIL1800 (PVC Extrusion)

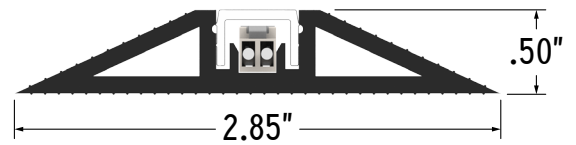
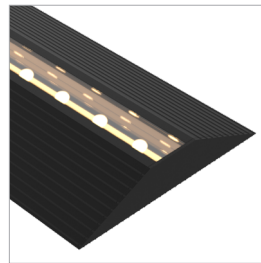


FLOOR TO FLOOR EXTRUSION



FLOOR TO FLOOR

AIL2000 (PVC Extrusion)



SERIES	SPACING	DIMMING	LED	LENS	FIXTURE LENGTH
AIL1700	-	-	-	-	-
AIL1700	4" O/C (3 LEDs per Foot, 0.75W per Foot)	Forward Phase (DM)	3000K (3.0K)	Clear Lens (CL)	Specify Length in Feet & Inches Example: 7'8"
AIL1800	(4")	0-10V: 100% - 10% (10V)	5000K (5.0K)	Smoke Lens (SLC)	
AIL2000	6" O/C (2 LEDs per Foot, 0.5W per Foot)	0-10V: 100% - 1% (10V-1%)	Red (R)		
	8" O/C (1.5 LEDs per Foot, 0.375W per Foot)	Hi-Lume 1% 2 Wire*1 (2 Wire)	Green (G)		
	(8")	Hi-Lume 1% 3 Wire*2 (3 Wire)	Blue (B)		
	12" O/C (1 LED per Foot, 0.25W per Foot)	Hi-Lume Premier 0.1%*3 (L3D0)	Amber (A)		
	(12")	JA8 0-10V (JA8-10V)			
	18" O/C (0.66 LED per Foot, 0.165W per Foot)	JA8 2 Wire (JA8-2WR)			
	(18")	DALI (DALI)			
		DMX-512 1990 (DMX)			
	Note: ± .125" Spacing Tolerance	Leave Blank for Non-Dimming			

*1 40 watt max Hi-Lume 1% LTEA2W #LTEA4U1UKL-CV240

*2 40 watt max Hi-Lume 1% L3DA3W #L3DA4U1UKL-CV240

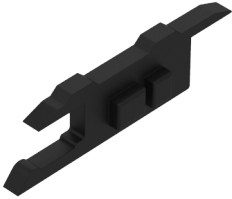
*3 96 watt max Hi-Lume Premier 0.1% #L3D0-96W24V-U

ACCESSORIES

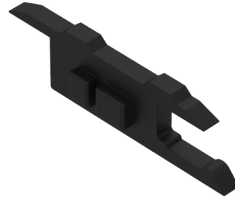
End Caps

AIL1700

Left End Cap
#AIL1700-ECL

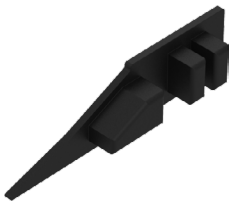


Right End Cap
#AIL1700-ECR

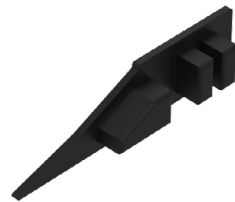


AIL1800

Left End Cap
#AIL1800-ECL

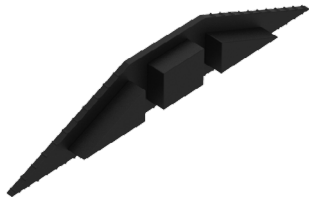


Right End Cap
#AIL1800-ECR

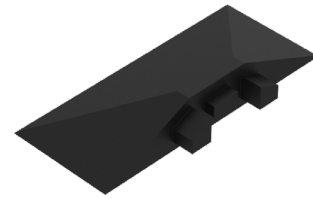


AIL2000

End Cap
#AIL2000-EC



Angled End Cap
#AIL2000-EC-A

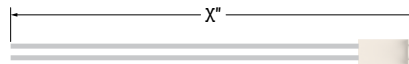


Adhesive

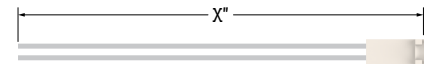


28 oz Adhesive Tube
(AIL2000-AD)

Connector



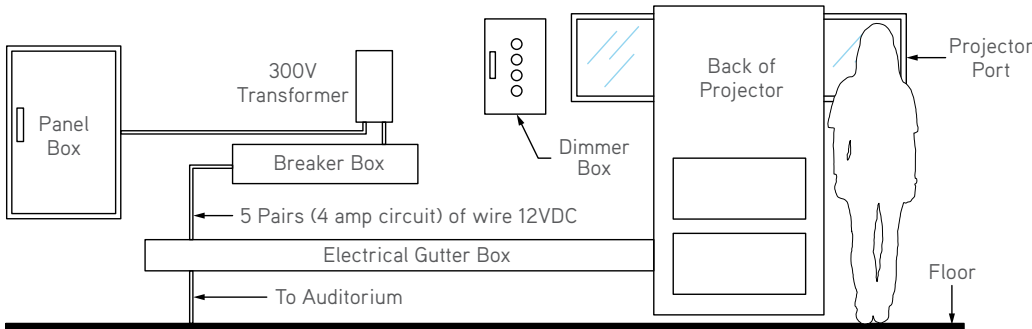
Power Connector (20/2 Gauge Wire)
AIL2000-PC (36" Standard)
AIL2000-PC-X (X = Specify Length)



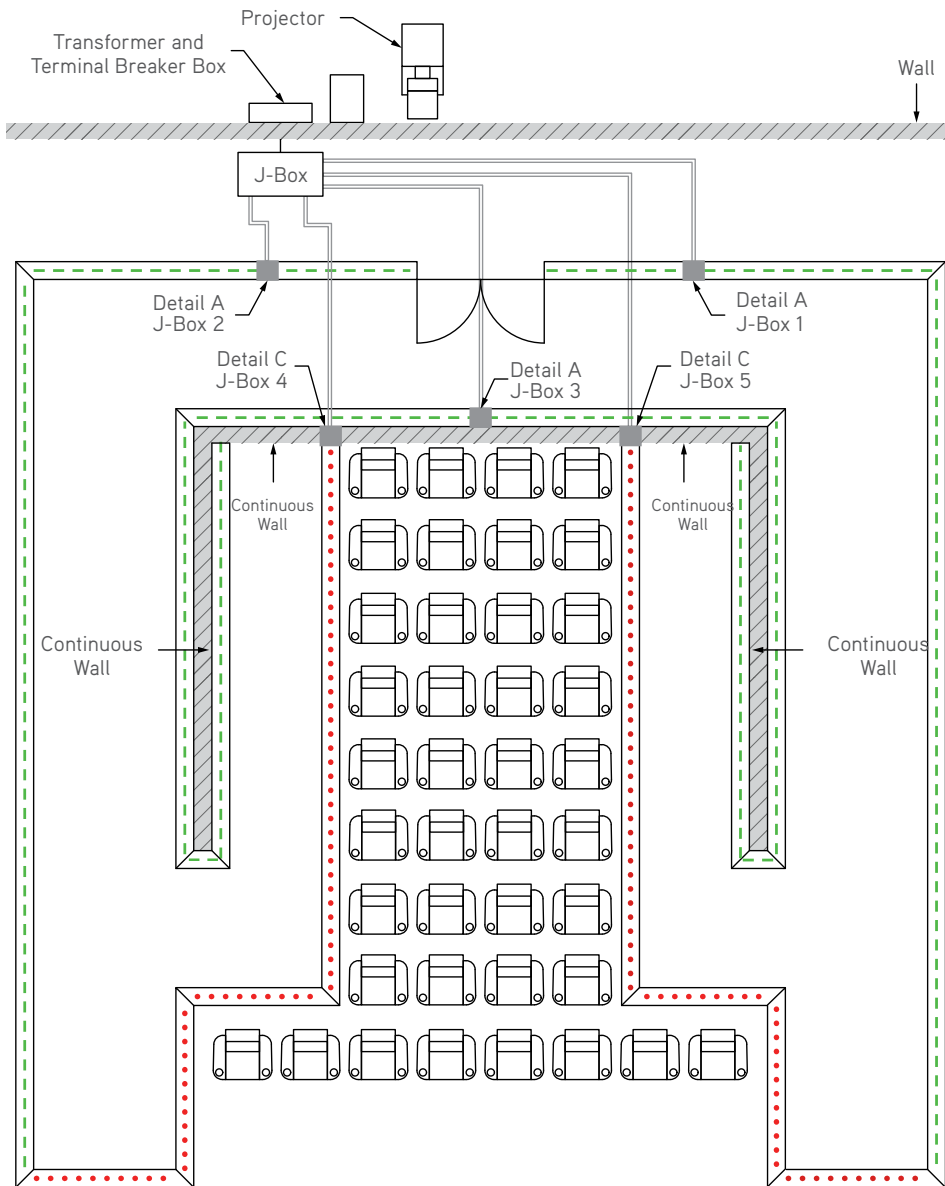
Continuous Connector (20/2 Gauge Wire)
AIL2000-CC (3" Standard)
AIL2000-CC-X (X = Specify Length)

DESIGN GUIDELINES

Front View of Projection Booth



Top View of Auditorium



LEGEND	
PATTERN	DESCRIPTION
•••••	Carpet-to-Floor (AIL1400, AIL1500, AIL1600, AIL1800)
— — — — —	Carpet-to-Wall (AIL1100, AIL1200, AIL1300, AIL1700)

TYPICAL LAYOUT FOR AUDITORIUM

Install 5 J-boxes in the following locations:

- J-box 1: Install on the right side of the entrance
- J-box 2: Install on the left side of the entrance
- J-box 3: Install in the front of the entrance
- J-box 4: Install on the left side of the aisle
- J-box 5: Install on the right side of the aisle

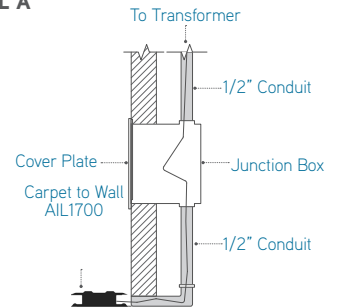
TRANSFORMER

Typical Class II transformer used is TRA300-6F-120V-12VDC

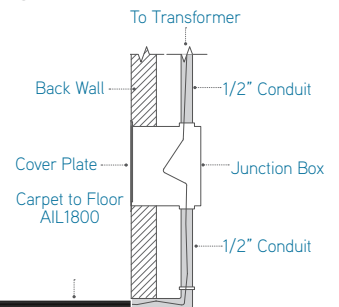
Note: Use separate wires for each circuit. Do not use a common ground. Use 14 gauge stranded wire. Use separate colors to identify circuits.

JUNCTION BOX DETAILS

DETAIL A



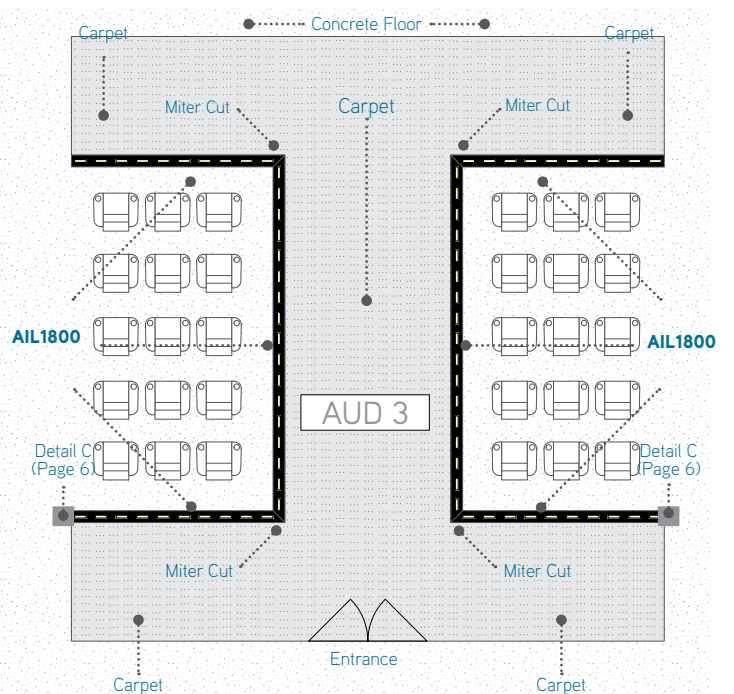
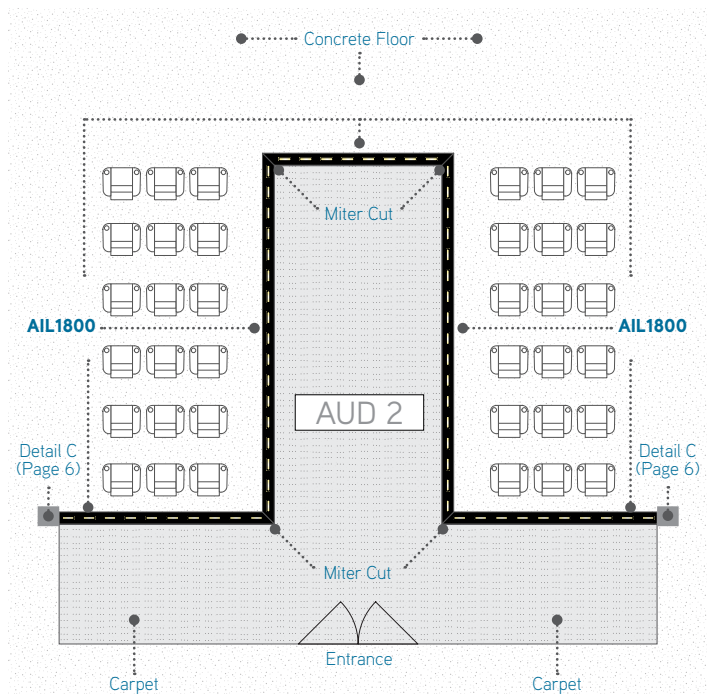
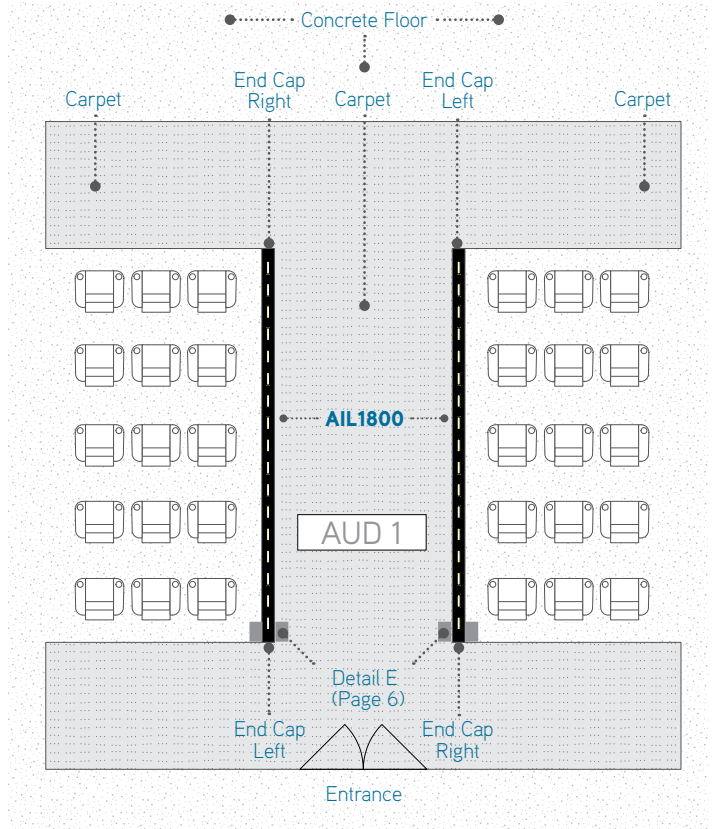
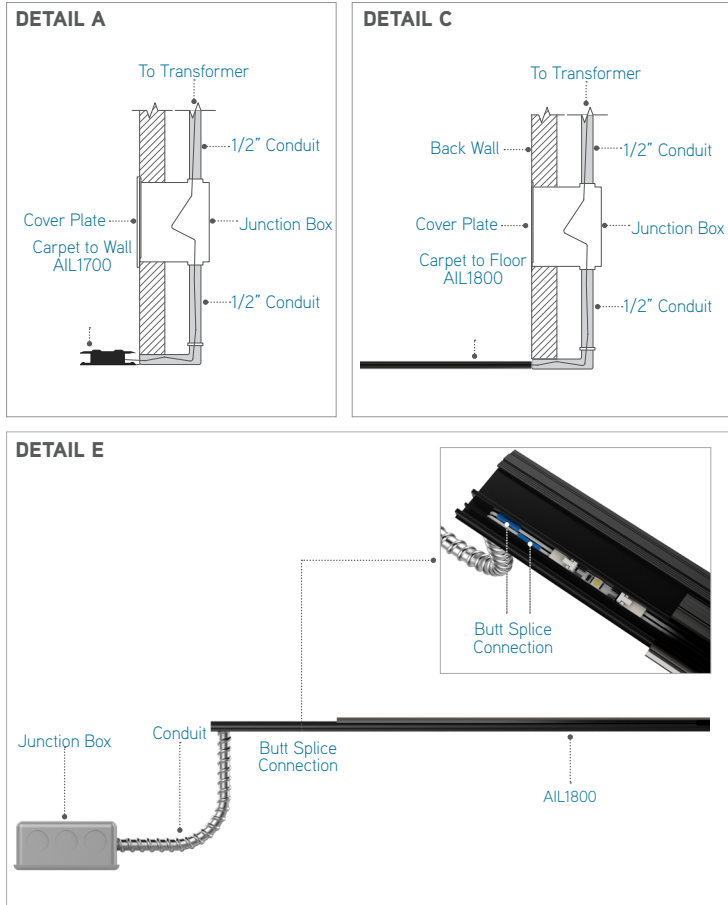
DETAIL C



DESIGN GUIDELINES

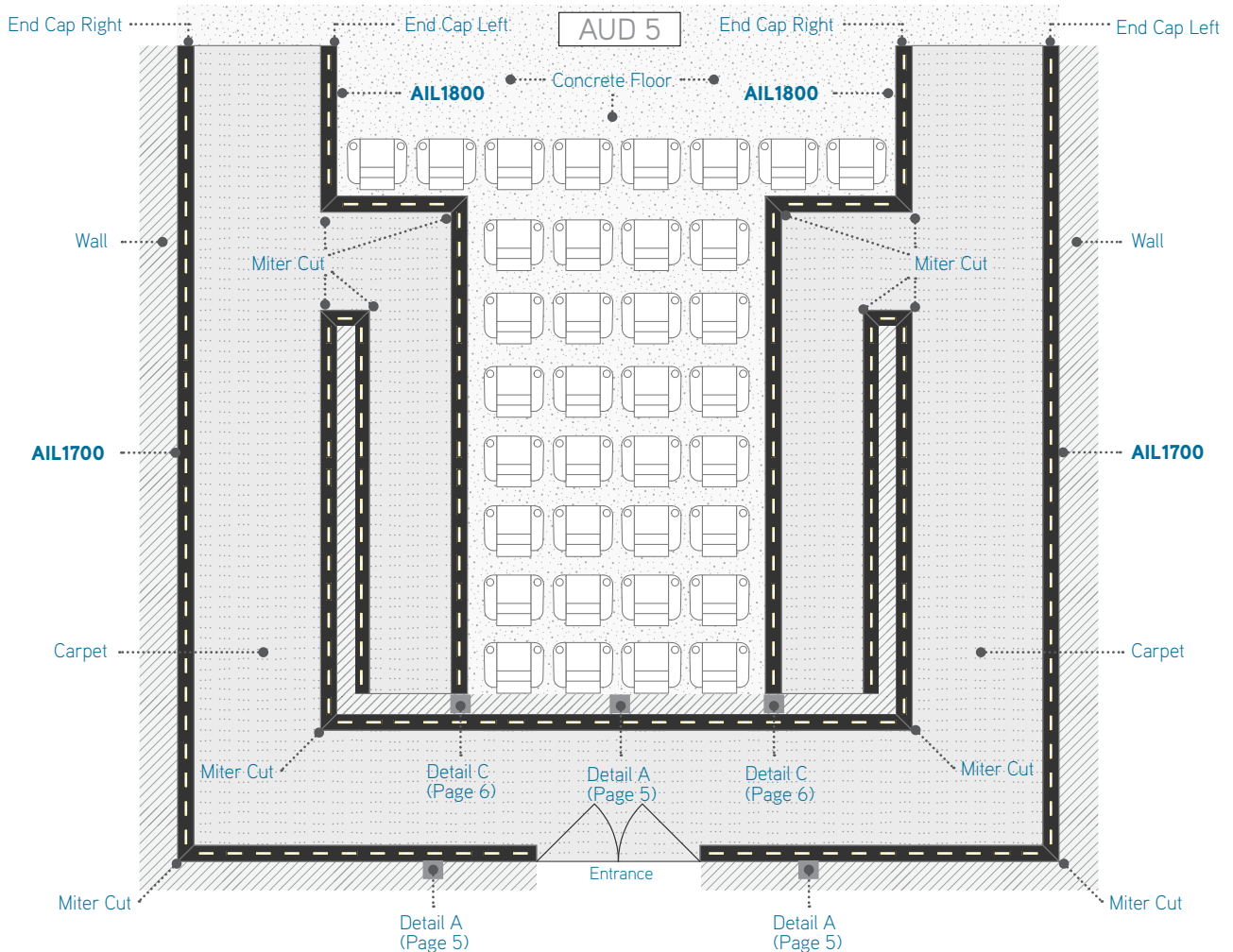
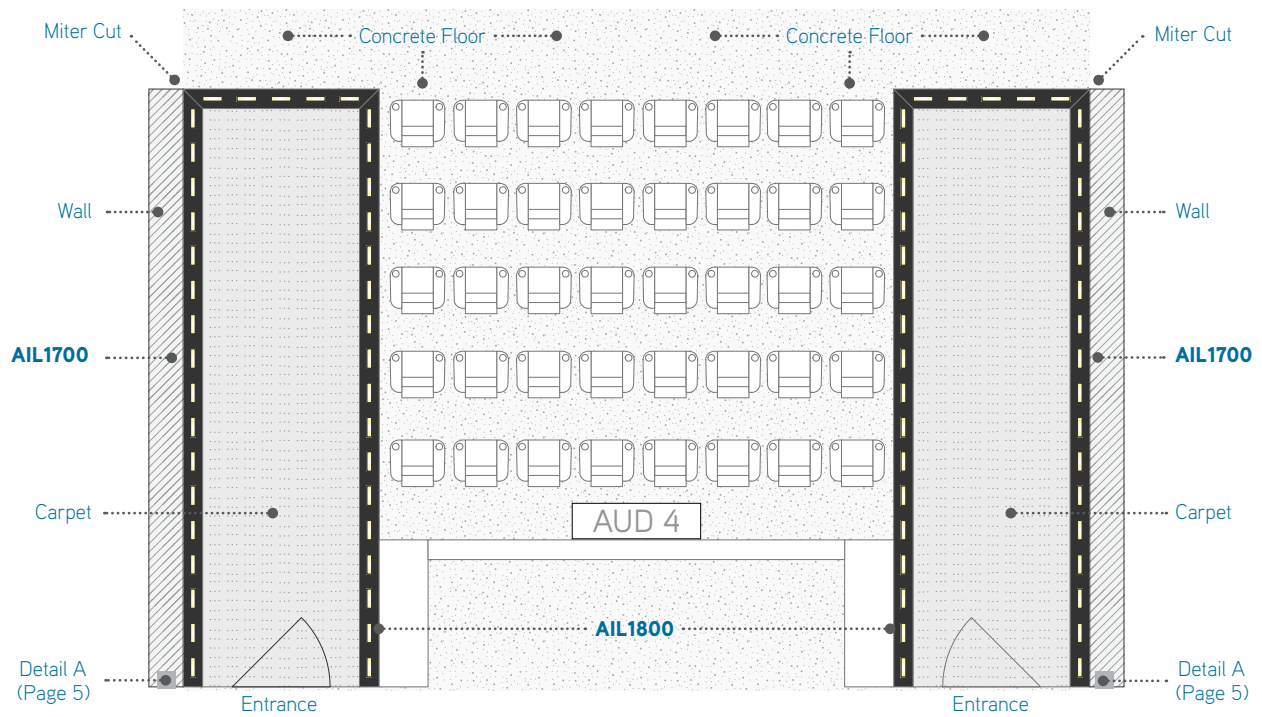
Typical Auditorium Layouts with Only Aisles (Top View)

JUNCTION BOX DETAILS



DESIGN GUIDELINES

Typical Auditorium Layouts with Only Aisles (Top View)





CALI

CALIFORNIA ACCENT LIGHTING, INC.

2820 E. Gretta Lane, Anaheim, CA 92806

ph. 800.921.CALI (2254) | fx. 714.535.7902 | info@calilighting.com | calilighting.com

© CALI. All rights reserved. CALI reserves the right to make changes or withdraw specifications without prior notice.

