



ALS500T-SMQ

DIRECT VIEW SURFACE MOUNT LUMINAIRE

CALI
CALIFORNIA ACCENT LIGHTING INC

*alum***LEDs**TM





ALS500T-SMQ

DIRECT VIEW SURFACE MOUNT LUMINAIRE



SINGLE
BIN
+-30K

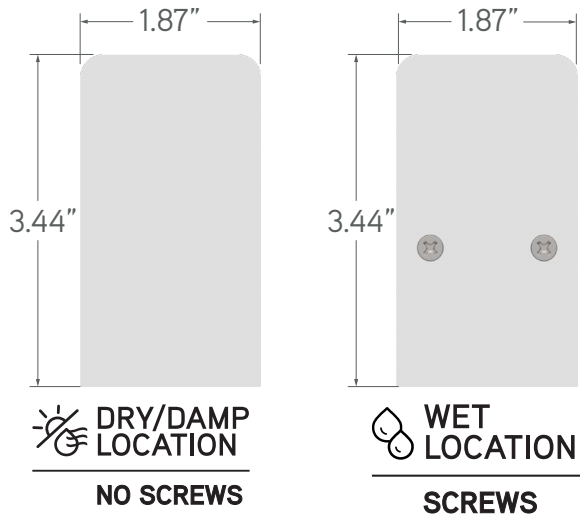


✓ TM-30
✓ LM-79
✓ LM-80

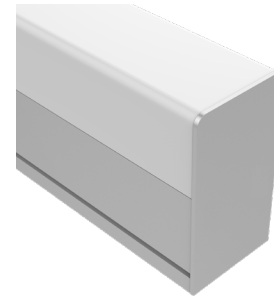
ALS500T-SMQ is built with a frosted lens that delivers a clean line of light and wide beam angle. Designers can choose from a variety of options such as color temperatures, watts per foot, and finish option.



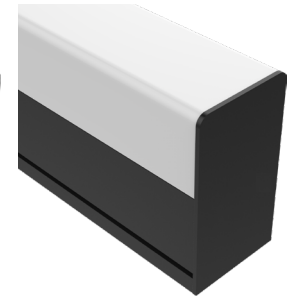
END VIEWS & STANDARD COLOR OPTIONS



WHITE (WH)

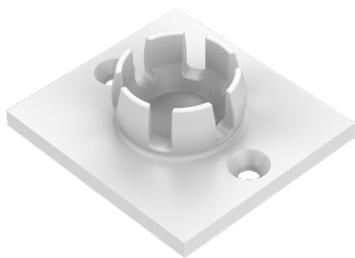


SATIN (SA)

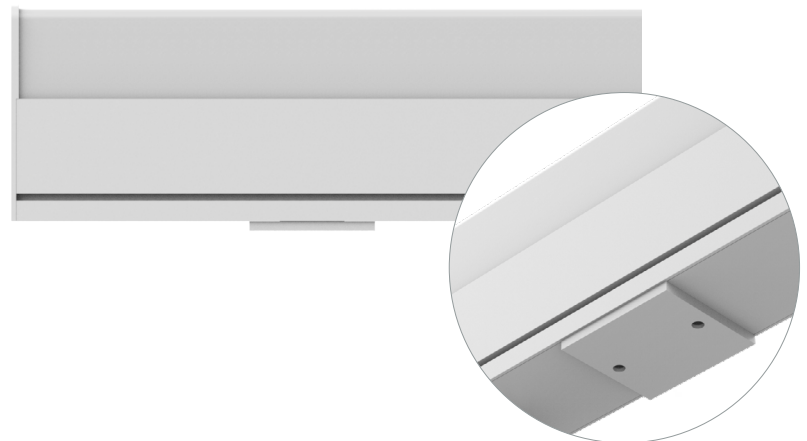
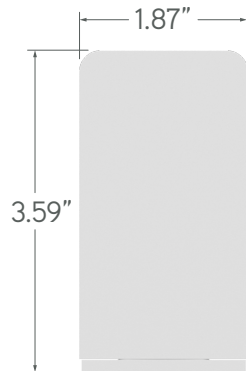


BLACK (BK)

MOUNTING ACCESSORIES



FLUSH MOUNTING PLATE
(ALS500T-SMQ-MP)

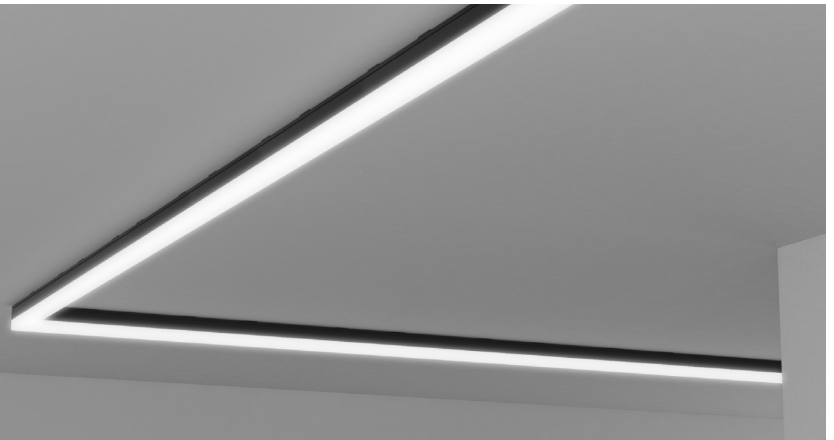




90° LINEAR CORNER

Seamless miter cut corner prevents dark spots and delivers an even line of light.

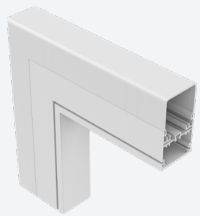
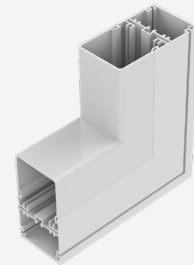
ALS500T-SMQ-90D



90° INTERNAL CORNER

Thoughtfully designed to maintain a seamless line of light in a variety of design spaces.

ALS500T-SMQ-90D-IN



90° EXTERNAL CORNER

Perfectly engineered to wrap around corners while preserving an even direct view line of light.

ALS500T-SMQ-90D-EX

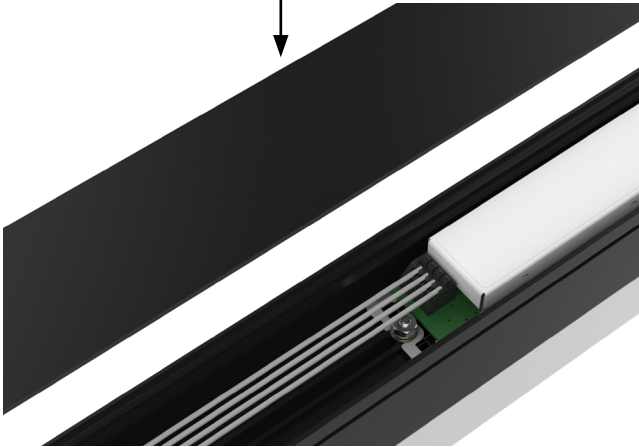


REPLACEABLE DRIVER

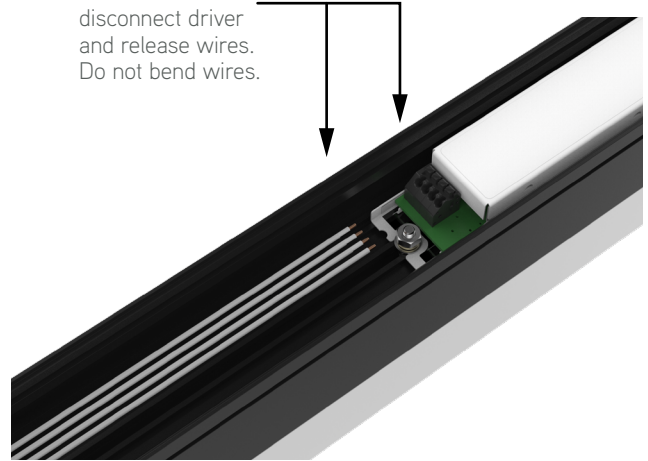
Tools Needed | Flat Screwdriver and Socket Wrench

The driver is easy to replace in the most seamless way.

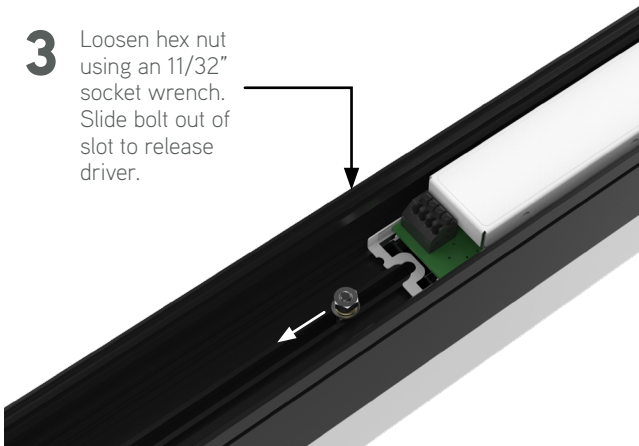
1 Remove bottom cap.



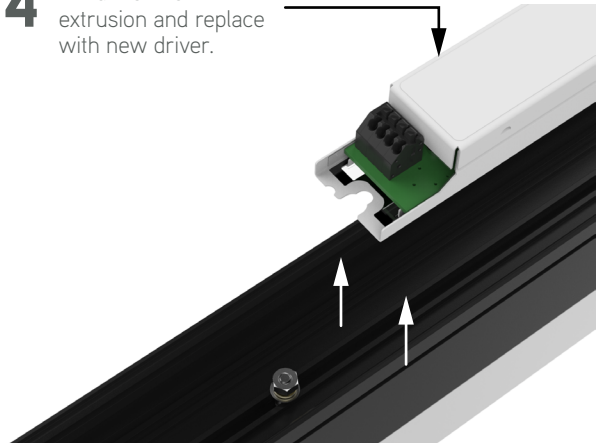
2 Push on modular connectors to disconnect driver and release wires. Do not bend wires.



3 Loosen hex nut using an 11/32" socket wrench. Slide bolt out of slot to release driver.



4 Lift driver from extrusion and replace with new driver.







CALI

CALIFORNIA ACCENT LIGHTING, INC.

2820 E. Gretta Lane, Anaheim, CA 92806

ph. 800.921.CALI (2254) | fx. 714.535.7902 | info@calilighting.com | calilighting.com

© CALI. All rights reserved. CALI reserves the right to make changes or withdraw specifications without prior notice.



REV. 8.31.2020