

# Seem® 2

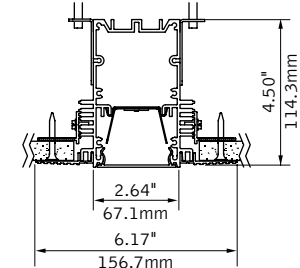
LED - WET LOCATION



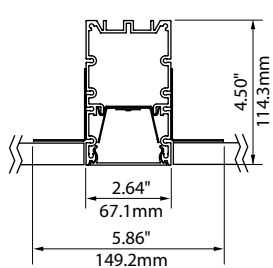
end detail

## DIMENSIONAL DATA

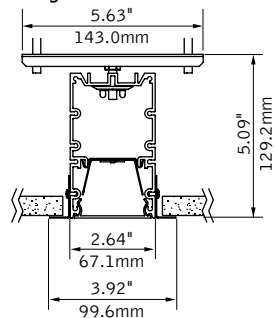
trimless mud-in (individual unit)



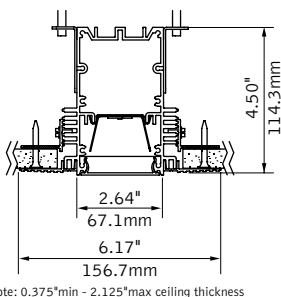
hard surface (individual unit)



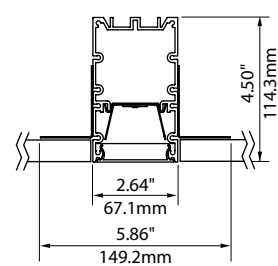
trim flange (individual unit)



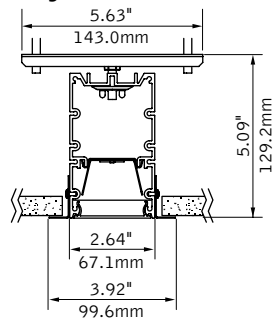
trimless mud-in (continuous run)



hard surface (continuous run)



trim flange (continuous run)



## FEATURES

Narrow extruded aluminum 2.5" aperture recessed slot LED suitable for wet location.

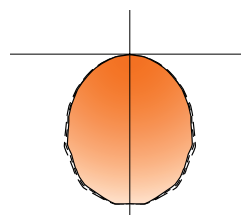
Integrates with ceiling for a clean, unobtrusive aesthetic.

Individual units and continuous runs in 1' increments.

Frosted acrylic lens provides uninterrupted illumination, without pixels or shadows.

LED position and lens material optimized to provide the perfect blend of high performance and visual comfort.

## PERFORMANCE



4' Flush Lens  
Nominal output:  
250 Lumens per foot  
**Delivered Lumens: 1000lm**  
**Total System Watts: 13W**

### PRODUCT OVERVIEW

Lumen Output:	500-2500lm
Wattage:	5-33W
LPW:	76-96
SDCM:	3

Photometric performance is measured in accordance with IESNA LM-79.  
Visit [focalpointlights.com](http://focalpointlights.com) for complete photometric data.

SPECIFICATIONS

LED System

Proprietary linear LED module incorporates premium LEDs on a robust platform to achieve excellent thermal management. LEDs are placed to promote a uniform appearance. Available in 3000K, 3500K, 4000K with CRI>80, 3SDCM. LED modules and drivers are replaceable from below.

Construction

One piece extruded aluminum housing. 20 Ga. steel end caps. Housing for new construction applications. 2' unit weight: 5.1 lbs., 3' unit weight: 7.6 lbs., 4' unit weight: 10.1 lbs., 5' unit weight: 12.6 lbs.

Optic

Reflectors fabricated of 22 Ga. steel finished in High Reflectance White powder coat. Extruded acrylic lens .07" thick with satin finish, up to 8' continuous. .020" thick acrylic lens water shield included for continuous runs.

Electrical

Luminaires are pre-wired with factory installed branch circuit wiring and over-molded quick connects. Standard 120-277V constant current driver includes 0-10V analog dimming.Power factor > .9.

Emergency Battery

Output - 10 watts for 90 minutes. Maximum mounting height: 17.9ft.

Labels

UL and cUL Listed for wet location recessed ceiling applications in indoor and outdoor environments. Lutron Drivers not recommended for outdoor environments below 0°C.

Finish

Polyester powder coat applied over a multi-stage pre-treatment.

Lumen Maintenance

Reported: L70 at >61,000 hours

Calculated: L70 at 270,000 hours

L90 at >61,000 hours

L90 at 73,000 hours

Derived from EPA TM-21 calculator. Based on typical conditions, consult factory for additional data.

Reliability

At Focal Point, our products are designed to stand the test of time. Each luminaire is engineered using superior components, manufactured with the utmost care and rigorously tested. Contact us for reliability data.

Warranty

LED system rated for operation in ambient environments up to 35°C. 5-year limited warranty.

4' PERFORMANCE CHART

Shielding	Lumens per Foot	Delivered Lumens	Tested System Watts	LPW
Flush Lens	125LF	500	5	96
	250LF	1000	13	80
	375LF	1500	19	79
	625LF	2500	33	76

Based on 3500k, 4' lengths. Lumen multiplier: Continuous runs = 0.93 Lumen output may vary +/- 5%. Actual wattage may vary +/- 5%.

ORDERING

Luminaire Series	FSM2LWL	
Seem 2 LED Wet Location	FSM2LWL	
Shielding		FL
Flush Satin Lens <small>(Ceiling applications only)</small>	FL	
Lumen Output		
125 Lumens per foot <small>(4' minimum.)</small>	125LF	
250 Lumens per foot	250LF	
375 Lumens per foot	375LF	
625 Lumens per foot	625LF	
Color Temperature		
3000K	30K	
3500K	35K	
4000K	40K	
Circuits & Zones		
1 Circuit, non-emergency	1C	
Consult Ordering Guide on page 3 for multiple circuiting and zoning options	_C_Z_DL	
Voltage		UNV
120/277 UNV Volt	UNV	
Control System & Dimming Level		
0-10V - 1% Dimming	L11	
0-10V - 10% Dimming	LD1	
Lutron Hi-Lume EcoSystem (LDE1) - 1% Dimming	LH1	
Ceiling Configuration		
Trim Flange Drywall	TF	
Mud-in Trimless, pre-set for 1/2" Drywall	XF1	
Mud-in Trimless, pre-set for 5/8" Drywall	XF2	
Mud-in Trimless, set thickness in field <small>(Mounting equipment assembled in field)</small>	XFF	
Non-Drywall Hard Surface	XFN	
Factory Options		
<small>(See Ordering Guide on page 3 for ordering details for DC, EC, EM &amp; ECD.)</small>		
Chicago Plenum	CP	
Daylight Circuit	_DC	
Emergency Circuit	_EC	
Emergency Battery Pack	_EM	
Emergency Control Device <sup>†</sup> <small>(4' minimum.)</small>	_ECD	
6' New York City Flex Whip	FNY	
6' Flex Whip	FW	
Finish		WH
Matte White Housing	WH	
Luminaire Length		ft
Specify luminaire/row length in 1' increments <small>(2' minimum, lengths are nominal. Housing length is 1" shorter than specified.)</small>	_ft	