

CATALOG #: \_\_\_\_\_

Type: \_\_\_\_\_

PROJECT: \_\_\_\_\_

## FEATURES

- Support human-centric design with adaptive, individualized lighting using tunable white light
- Pick from two small-scale architectural styles, ClassicLine or CurviLine
- Control direct and indirect lighting independently using a pull chain or bedside controller
- Designed with the appearance of finely crafted carpentry
- Precision reflectors and diffusing elements produce comfortable ambient light along with a highly functional reading light
- Small scale design complements architecture with minimal impact on space
- The direct and indirect components are fully isolated and separately switchable using a pull chain, bedside controller, or wall switch
- Heavy-duty extruded aluminum housing ensures superior durability while providing crisp design detail
- Anti-microbial white finish is standard
- Made Right Here® in the USA



**ORDERING EXAMPLE: CB CL - 4 - L40U / L40D / 8TW - AF125 - OPTIONS - DALI - UNV**

## ORDERING INFO

SERIES	STYLE	LENGTH	LUMEN PACKAGE (EXAMPLE: L40U/L40D/8TW)			
CB	CL ClassicLine	4' 4"	Specify lumen packages: <b>U</b> for Uplight and <b>D</b> for Downlight			
	CV CurviLine		<b>LUMENS</b> <sup>[1]</sup>	<b>U OR D</b>	<b>CRI</b>	<b>CCT</b>
			<b>L25</b> 2,500lm	<b>U</b> Uplight	<b>8</b> 80	<b>TW</b> Tunable white (3000K-5000K)
			<b>L40</b> 4,000lm	<b>D</b> Downlight		<b>TW2</b> Tunable white (2700K-6500K)

## SHIELDING

<b>AF12125</b>	Inverted frosted acrylic, pattern 12, .125" thick
<b>AF125</b>	Frosted acrylic, .125" thick

## OPTIONS <sup>[2]</sup>

<b>GLR</b>	Fuse, fast blow <sup>[3]</sup>
<b>(L__)</b>	Additional lower lumen packages available. <sup>[4]</sup> Example: 3,500 nominal lumens = CBCL-4-L40U/L40D/8TW-(L35D)

## SPECIFY R FOR RIGHT AND L FOR LEFT <sup>[5]</sup>

<b>NL_</b>	LED nightlight/chartlight
<b>NL_/WRS/120</b>	LED nightlight/chartlight and white rocker
<b>PS_/120</b>	Single-circuit pull switch, operates down light
<b>PS2_/120</b>	Two-circuit, 4-position pull switch
<b>GCO_</b>	Grounded convenience outlet

## SPECIFICATIONS

- HOUSING** – Seam-welded extruded aluminum.
- REFLECTIVE SURFACES** – 92% minimum average reflective white polyester powder coat on interior steel components.
- SHIELDING** – Frosted acrylic or inverted prismatic frosted acrylic.
- FINISH** – Textured anti-microbial matte white polyester TGIC powder coat bonded to phosphate-free, multi-stage pretreated metal. All parts painted after fabrication to facilitate installation, increase efficiency, and inhibit corrosion.
- ELECTRICAL** – High-quality mid-power LED board. L70 > 60,000 hours per IES TM-21. Tunable White products use LEDs of multiple CCTs and may produce a perceptibly different shade of white from single-CCT products at the same CCT. All CCTs are within 3 MacAdam ellipses.
- MOUNTING** – Wall mounts over 4" x 2" horizontal junction box.
- LISTINGS** –
  - cCSAus certified as luminaire suitable for dry or damp locations.
  - Complies with the Buy American Act and other federal regulations. Request certification at [hew.com/baa](http://hew.com/baa).
- WARRANTY** – 5-year limited warranty, see [hew.com/warranty](http://hew.com/warranty).

## CONTROL <sup>[6]</sup>

<b>DALI</b>	Driver prewired for DALI applications
<b>DIM</b>	Dimming driver with (1) 0-10V signal to control dimming and (1) 0-10V signal to control CCT
<b>DMX</b>	Driver prewired for DMX applications
<b>PSQ</b>	Lutron T-Series 2-channel tunable white 1%.

## VOLTAGE

<b>120</b>	120V
<b>277</b>	277V
<b>UNV</b>	120-277V

## NOTES

- Lumen output based on 4000 CCT. Actual lumens may vary +/-5%, see page 2 for FIXTURE PERFORMANCE DATA. Additional lumen packages available, see options.
- See page 3 for FINISH OPTIONS. See page 3 for LOW-VOLTAGE CONTROLLER.
- Specify voltage, one per driver.

- Specify in increments of 100 nominal lumens. Option must be specified with next higher lumen package.
- 120V only.
- See page 3 for CONTROL DETAILS.



## FIXTURE PERFORMANCE DATA

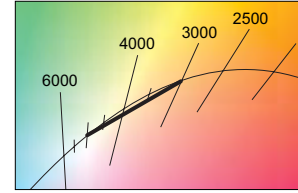
LED PACKAGE	TOTAL DELIVERED LUMENS	TOTAL WATTAGE	TOTAL EFFICACY (lm/W)
L25	5090	54.7	93
L40	8004	91.3	88

- Photometrics tested in accordance with IESNA LM-79. Results shown are based on 25°C ambient temperature.
- Wattage shown is average for 120V through 277V input.
- Results based on 4000K, 80 CRI, actual lumens may vary +/-5%
- Use multiplier table to calculate additional options.

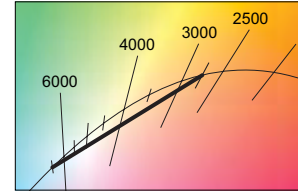
## MULTIPLIER TABLE

CCT	COLOR TEMPERATURE			
	TW		TW2	
	LUMENS	WATTAGE	LUMENS	WATTAGE
2700K	—	—	0.93	1.02
3000K	0.95	1.04	0.95	1.01
3500K	0.98	1.02	0.98	1.00
4000K	1.00	1.00	1.00	1.00
5000K	0.96	1.04	1.02	1.00
6500K	—	—	1.01	1.04

## TW

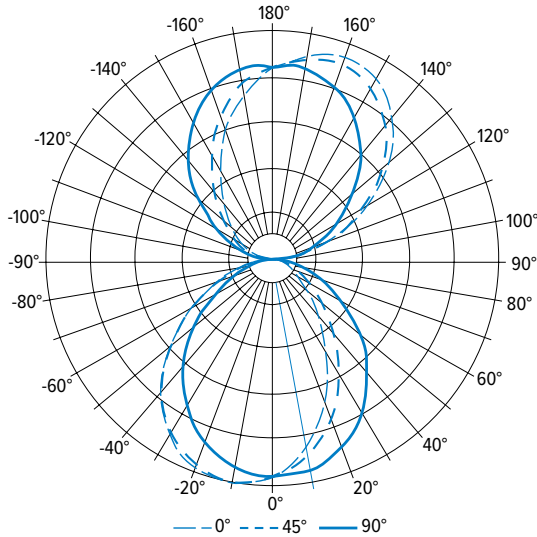


## TW2



## PHOTOMETRY

CBCL-4-L40U/L40D/8TW-AF125-DALI-UNV Report #: 19020.0; 08/06/15 | Total Luminaire Output: 8004 lumens; 91.3 Watts | Efficacy: 88.0 lm/W | 80 CRI; 4000K CCT



VERTICAL ANGLE	HORIZONTAL ANGLE						ZONAL LUMENS
	0°	45°	90°	135°	180°		
0	1716	1716	1716	1716	1716		
5	1618	1650	1711	1770	1767	162	
15	1338	1455	1641	1780	1799	454	
25	977	1158	1485	1703	1724	657	
35	628	852	1262	1523	1539	739	
45	372	566	987	1244	1258	698	
55	206	349	696	914	926	568	
65	91	177	435	589	616	390	
75	24	51	206	331	352	209	
85	7	7	43	120	140	71	
90	6	8	15	42	63		
95	17	53	87	78	64	79	
105	303	326	255	185	152	255	
115	653	657	460	325	271	460	
125	1016	956	673	478	397	627	
135	1313	1238	933	654	550	727	
145	1556	1469	1169	862	750	730	
155	1675	1595	1356	1104	972	621	
165	1678	1624	1483	1321	1220	415	
175	1564	1564	1542	1478	1423	145	
180	1521	1521	1521	1521	1521		

LUMEN SUMMARY	ZONE	LUMENS	% FIXTURE
	0 - 30	1273	16
	0 - 40	2012	25
	0 - 60	3277	41
	0 - 90	3947	49
	90 - 120	794	10
	90 - 150	2878	36
	90 - 180	4057	51
	0 - 180	8004	100



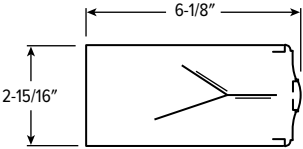
LOW-VOLTAGE CONTROLLER

EXAMPLE: LVC2U/D			
CONTROLLER	LOAD 1		LOAD 2
LVC1 1-circuit	U D N	Up Down Nurse	
LVC2 2-circuit	U/ D/	Up Down	D/ Down N/ Nurse
LVC3 Dimming control	DIMU/ DIMD/	Uplight, 0-10 dimming <sup>1</sup> Downlight, 0-10 dimming <sup>1</sup>	U/ Up D/ Down N/ Nurse
	DIMU/DIMD/ Uplight and downlight, 0-10 dimming <sup>1</sup>		N Nurse

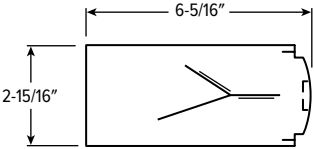
<sup>1</sup> Smooth dimming of the load utilizing a single, dry contact, momentary, normally open switch which will dim from 25% up to 100% while holding down the switch.

CROSS SECTIONS

CLASSICLINE (CL)

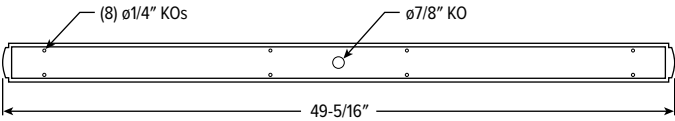


CURVILINE (CV)



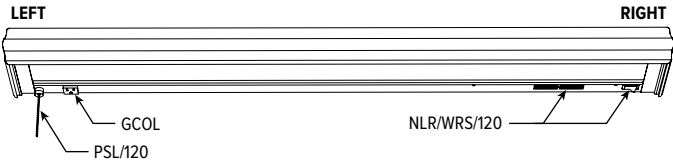
FIXTURE DETAILS

BACKVIEW



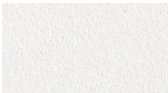
Weight: 14 lbs

OPTIONS



FINISH OPTIONS

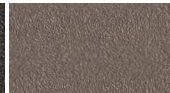
WHITE



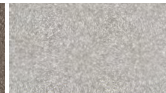
BLACK



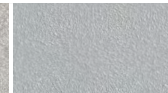
BRONZE



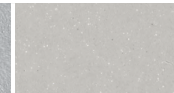
NICKEL



SILVER



ALUM



For custom color, please specify RAL code or a manufacturer code with description. All custom colors other than RAL require two sample swatches, minimum 1" square.

CONTROL DETAILS

DIM



DALI



DMX



LUTRON T-SERIES

