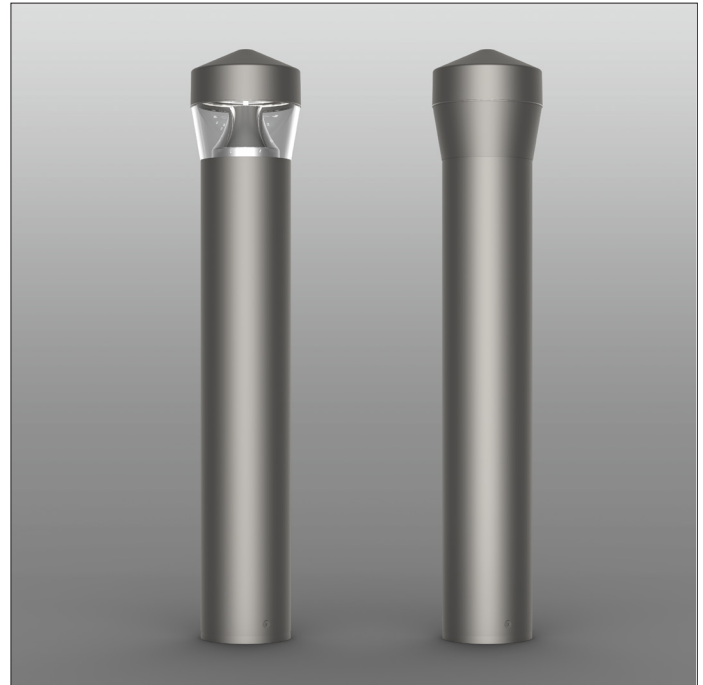


The Radian Impact Bollard combines security, style, and impact resistance that blends beautifully into any pathway environment while protecting from traffic intrusion. Tested with the ASTM F3016 industry standard, the 6" version offers a S10 impact rating (rated to stop a 5,000 lb vehicle up to 18.9 mph).

The Radian Impact Bollard is a fusion of contemporary design and state-of-the-art lighting technology. The performance of this bollard produces a smooth uniform light pattern at a broad angle at extremely efficient low wattages.

The Radian Impact Bollard is available in Kelvin temperature offerings of 3000K, 4000K, and 5000K to blend with any commercial, retail, or pathway environment. The ParaLine Optic comes standard with a clear lens.



LED WATTAGE CHART

	16L
350 milliamps	17w
530 milliamps	26w
700 milliamps	35w

Project Name _____ Type: _____

Cat#	Height	Shaft Dim	Lit/UnLit	Light Dist.	# of LEDs	Milliamps	Kelvin	Volts	Color	Options
Radian Impact Bollard (RDN-IMP)	45.25" (45)	6" Round Impact Rated up to 18.9 MPH (6R-S10)	Lit (LIT) UnLit (UNL) ²	Type 5 (T5)	16 (16L)	350 (35)	3000K, 70 CRI (30K7)	120-277 (UNV)	Bronze Textured (BRZ)	Button Photocell (PC) ¹
						530 (53)	4000K, 70 CRI (40K7)	347-480 (HV)	White Textured (WHT)	Marine Grade Finish (MGF)
						700 (7)	5000K, 70 CRI (50K7)		Smooth White Gloss (SWT)	House Side Shield (HSS)
									Silver (SVR)	Emergency Battery Back-Up (EM)
								Black Textured (BLK)		
								Smooth Black Gloss (SBK)		
								Graphite Textured (GPH)		
								Grey Textured (GRY)		
								Custom (CS)		

Notes:
¹ Universal Voltage 120-277
² If Unlit is selected the following categories will not be available: Light Distribution, # of LEDs, Milliamps, Kelvin, Volts, Photocell, and House Side Shield

PRODUCT SPECIFICATIONS

ELECTRICAL

- 120-277 Volts (UNV) or 347-480 Volts (HV)
- 0-10V dimming driver
- Driver power factor at maximum load is $\geq .95$, THD maximum load is 15%
- LED Drivers Ambient Temp. Min is -40°C and Ambient Temp. Max ranges from 50°C to 55°C and, in some cases, even higher. Consult the factory for revalidation by providing the fixture catalog string before quoting and specifying it.
- All internal wiring UL certified for 600 VAC and 105°C
- CRI 70
- Color temperatures: 3000K, 4000K, 5000K
- Surge Protection: 20kA supplied as standard.

CONSTRUCTION

- Extruded Aluminum. Cast Aluminum. Spun Aluminum

OPTIONS

- MARINE GRADE FINISH (MGF) - A multi-step process creating protective finishing coat against harsh environments. Chemically washed in a 5 stage cleaning system. Pre-baked, Powder coated 3-5 mils of Zinc Rich Super Durable Polyester Primer. Oven Baked. Finished Powder Coating of Super Durable Polyester Powder Coat 3-5 mil thickness.

- EMERGENCY BATTERY BACK-UP (EB)
 - 100-277 VAC \pm 10%, 50/60 Hz Input Voltage
 - 43mA Max. Input Current
 - 2.82W Max. Input Power
 - 24-48 Hours Recharge Time
 - Battery Type NiCd 9.6VDC or LiFePO4 9.6VDC
 - 90 Minutes Min. Illumination Time
 - 20W Total Max. LED Powered
 - Class 2 Output Classification

- HOUSE SIDE SHIELD (HSS)

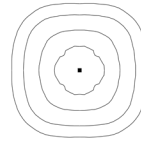
CONTROL OPTIONS

- PHOTOCCELL (PC) - Button Type
- Controls Agnostic: Please contact factory for your preferred controls option.

LIGHT DISTRIBUTION

Utilizes a linear diffused pattern, softening the light distribution and eliminating any dark shadows or striations.

IES Types



TYPE V (T5)

FINISH

- 3-5 mils electrostatic powder coat.
- NLS Lighting standard high-quality finishes prevent corrosion and protects against extreme environmental conditions

WARRANTY

Five-year limited warranty for drivers and LEDs.



The information and specifications on this document are subject to change without any notification. All values are design, nominal, or typical or prorated values when measured under internal and external laboratory conditions.



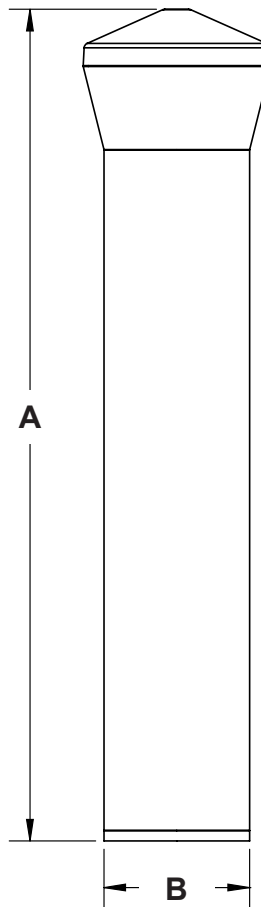
701 Kingshill Place, Carson, CA 90746
Call Us Today (310) 341-2037

nslighting.com

PRODUCT SPECIFICATIONS

RADIAN IMPACT BOLLARD - LUMEN DATA CHART

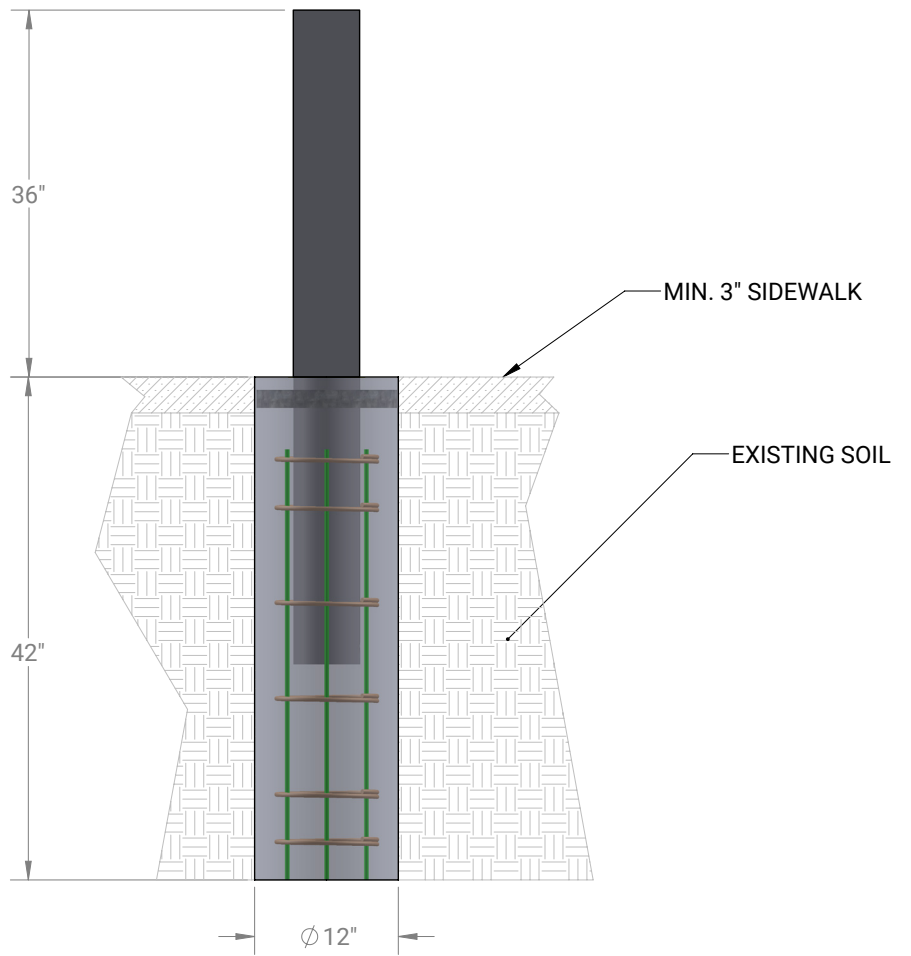
PART NUMBER	T5 LUMENS	T5 Lm/W	WATTS
RDN-16L-35-30K7	1,983	117	17
RDN-16L-35-40K7	2,082	122	17
RDN-16L-35-50K7	2,082	122	17
RDN-16L-53-30K7	3,173	122	26
RDN-16L-53-40K7	3,331	128	26
RDN-16L-53-50K7	3,331	128	26
RDN-16L-7-30K7	3,966	113	35
RDN-16L-7-40K7	4,164	119	35
RDN-16L-7-50K7	4,164	119	35



DIMENSION	RDN-IMP
A	45.25"
B	6" OD

WEIGHT	RDN-IMP
	14 LBS

PRODUCT SPECIFICATIONS



Mounting

*In-ground cement with rebar support cage
(refer to installation instructions)*