



Height
10' - 35'

Pole Shaft

The pole shaft material is a weldable grade hot rolled commercial quality carbon steel tubing with a minimum yield of 46,000 psi. Conforms to ASTM A500 Grade B Standards. Poles have ground lug welded inside hand-hole opposite side of the hand-hole. Pole shaft is welded to base plate on top and bottom of base plate.

Base Plate

The Base Plate is manufactured from structural hot rolled steel that meets or exceeds a minimum yield strength of 36,000 psi, conforms the ASTM-A36 standards. Base Plate vary in size from 1" thick for poles 21 feet and over, 3/4" thick for poles 10 to 20 feet.

Anchor Bolts

All anchor bolts are hot dipped galvanized steel and come with two galvanized nuts and washers per bolt. Minimum yield strength 50,000 psi. Anchor bolts are not included for Custom Bolt Circle.

Base Cover

All base covers are fabricated two-piece 6063 aluminum and powder coated to match the pole.

Hand-Hole

A reinforced hand-hole is 12" on center from the base plate and is constructed of 3"x 5" rectangular steel tubing which is welded to pole shaft for added strength. The hand-hole covers are provided with internal bridge support and powder coated to match pole finish.

Pole Cap

All poles come with a removable polymer pole cap installed. All pole caps are black finish.

Finish

All poles are treated with shot blast media for a near white finish, power blasted with 100 psi prior to powder coat application. Electrostatically applied polyester powder coat with a 3 to 5 mil thickness for maximum adherence.

Marine Grade Finish

All poles are washed through a 5-stage cleaning system with a deionized rinse, a 3 to 5 mils zinc rich durable polyester primer powder coat, followed by a 3 to 5 mils super durable polyester powder coat finish.

Galvanized Finish

All poles are Hot Dipped Galvanized in a multi stage process. Galvanizing Specification, Zinc (Hot Dipped Galvanized) per ASTM A 123/A 123M - 02

Zinc coatings on threaded materials shall conform to specification A 153 /A 153M. The coating shall be continuous and reasonably smooth and uniform in thickness and in weight.

Galvanizing Adherence - The Zinc coating shall withstand handling consistent with the nature and thickness of the coating and normal use of the article without peeling or flaking.

Galvanized Under Powder

Galvanized Under Powder (GUP) adheres to above galvanized specification, and the second stage is a light sand blast on the outside of the pole, third stage is a 3-5 mils polyester powder coat finish for maximum adherence.

Vibration Dampener

The Vibration Dampener is factory installed. The Vibration Dampener consists of a rugged galvanized chain coated with heavy duty polyester tubing that is factory secured at the bottom 2-3rds of the pole and field secured by contractor at the base during installation.



Project Name:

Type:

SSSP ORDERING GUIDE

| Cat# | Height | Pole Dimension | Gauge | Base Pattern |
|--|--|---|---|--|
| Square Straight Steel Pole (SSSP) | 10' (10) 12' (12) 14' (14) 16' (16) 18' (18) 20' (20) 22' (22) 24' (24) 25' (25) 26' (26) 28' (28) 30' (30) 35' (35) | 4" Square (4S) 5" Square (5S) 6" Square (6S) | .120 Wall Thickness (11G) .180 Wall Thickness (7G) | (10'-20') 9" - 10 3/8" Bolt Circle (9BC) (22'-35') 11 1/2" - 14" Bolt Circle (12BC) Custom Bolt Circle (CBC) <i>* Consult Factory</i> |

| Mounting | Color | Bolts | Options |
|--|--------------------------------|-------------------------------|--|
| Single (SGL) | Bronze Textured (BRZ) | 3/4" x 30" (3430) | GFI Kit (GFI20A) 20 Amp <i>Weather Proof Receptacle</i> |
| Double (D-90) (D-180) | White Textured (WHT) | 1" x 36" (136) | GFI Provision Only (PROV) |
| Triple (T-90) | Smooth White Gloss (SWT) | Less Anchor Bolts (LAB) | Galvanized (GLV) |
| Quad (QD) | Silver (SVR) | | Galvanized Under Powder (GUP) |
| No Drill (ND) <i>*Tenon Option</i> | Green Textured (GRN) | | 1/2" Coupling (COUP) <i>* Specify Location</i> |
| Tenon | Hunter Green Textured (HGN) | | Vibration Dampener (VD) |
| 2 3/8" Round (T2R) | Black Textured (BLK) | | Extra Hand Hole (XHH) <i>* Specify Location</i> |
| 3" Round (T3R) | Smooth Black Gloss (SBK) | | Marine Grade Finish (MGF) |
| 3 1/2" Round (T312R) | Graphite Textured (GPH) | | |
| 4 1/2" Round (T412R) | Grey Textured (GRY) | | |
| 3 1/2" Square (T312S) | Custom (CS) | | |
| 4 1/2" Square (T412S) | | | |
| 5 1/2" Square (T512S) | | | |

Max. allowable EPA - SSSP poles (per AASHTO LRFDLTS-1)

| Catalog Number | Shaft Length, ft | Wall thickness, in. | Shaft dia., in. | Base Plate, in. | Bolt Circle, in. | Bolts | 80 mph | Max. wt. (lb) | 90 mph | Max. wt. (lb) | 100 mph | Max. wt. (lb) | 110 mph | Max. wt. (lb) | 115 mph | Max. wt. (lb) | 120 mph | Max. wt. (lb) | 130 mph | Max. wt. (lb) | 140 mph | Max. wt. (lb) | 150 mph | Max. wt. (lb) | 160 mph | Max. wt. (lb) | 170 mph | Max. wt. (lb) | 180 mph | Max. wt. (lb) |
|-------------------------|------------------|---------------------|-----------------|-----------------|------------------|----------|--------|---------------|--------|---------------|---------|---------------|---------|---------------|---------|---------------|---------|---------------|---------|---------------|---------|---------------|---------|---------------|---------|---------------|---------|---------------|---------|---------------|
| SSSP-10-4S-11G-9BC-3430 | 10 | 0.120 | 4 | 9" sq. | 9 | 3/4"x30" | 20.0 | 250 | 20.0 | 250 | 20.0 | 250 | 20.0 | 250 | 20.0 | 250 | 20.0 | 250 | 20.0 | 250 | 20.0 | 250 | 17.8 | 250 | 15.6 | 250 | 13.2 | 250 | 11.4 | 250 |
| SSSP-12-4S-11G-9BC-3430 | 12 | 0.120 | 4 | 9" sq. | 9 | 3/4"x30" | 20.0 | 250 | 20.0 | 250 | 20.0 | 250 | 20.0 | 250 | 20.0 | 250 | 20.0 | 250 | 19.5 | 250 | 16.3 | 250 | 13.7 | 250 | 11.9 | 250 | 10.1 | 250 | 8.7 | 218 |
| SSSP-14-4S-11G-9BC-3430 | 14 | 0.120 | 4 | 9" sq. | 9 | 3/4"x30" | 20.0 | 250 | 20.0 | 250 | 20.0 | 250 | 20.0 | 250 | 20.0 | 250 | 19.3 | 250 | 15.9 | 250 | 13.1 | 250 | 10.9 | 250 | 9.1 | 227 | 7.3 | 183 | 6.3 | 158 |
| SSSP-15-4S-7G-9BC-3430 | 15 | 0.188 | 4 | 9" sq. | 9 | 3/4"x30" | 20.0 | 250 | 20.0 | 250 | 20.0 | 250 | 20.0 | 250 | 20.0 | 250 | 20.0 | 250 | 17.7 | 250 | 14.7 | 250 | 11.9 | 250 | 9.9 | 248 | 8.3 | 208 | 6.9 | 173 |
| SSSP-16-4S-11G-9BC-3430 | 16 | 0.120 | 4 | 9" sq. | 9 | 3/4"x30" | 20.0 | 250 | 20.0 | 250 | 20.0 | 250 | 18.1 | 250 | 16.1 | 250 | 14.7 | 250 | 11.9 | 250 | 9.7 | 242 | 7.9 | 198 | 6.1 | 153 | 5.1 | 128 | 4.1 | 103 |
| SSSP-18-4S-11G-9BC-3430 | 18 | 0.120 | 4 | 9" sq. | 9 | 3/4"x30" | 20.0 | 250 | 20.0 | 250 | 19.2 | 250 | 15.2 | 250 | 13.2 | 250 | 12.0 | 250 | 9.2 | 230 | 7.2 | 180 | 5.6 | 140 | 4.6 | 115 | 3.2 | 80 | 2.2 | 60 |
| SSSP-20-4S-11G-9BC-3430 | 20 | 0.120 | 4 | 9" sq. | 9 | 3/4"x30" | 20.0 | 250 | 20.0 | 250 | 16.1 | 250 | 12.3 | 250 | 10.7 | 250 | 9.7 | 242 | 7.1 | 178 | 5.3 | 133 | 3.9 | 98 | 2.7 | 68 | 1.7 | 60 | 0.9 | 60 |
| SSSP-20-4S-7G-9BC-3430 | 20 | 0.188 | 4 | 9" sq. | 9 | 3/4"x30" | 20.0 | 250 | 20.0 | 250 | 20.0 | 250 | 15.7 | 250 | 14.1 | 250 | 12.5 | 250 | 9.5 | 238 | 7.7 | 193 | 5.7 | 143 | 4.3 | 108 | 3.1 | 78 | 2.1 | 60 |
| SSSP-20-5S-11G-9BC-3430 | 20 | 0.120 | 5 | 9" sq. | 9 | 3/4"x30" | 20.0 | 250 | 20.0 | 250 | 20.0 | 250 | 19.3 | 250 | 16.9 | 250 | 15.0 | 250 | 11.6 | 250 | 9.0 | 226 | 6.9 | 172 | 5.1 | 128 | 3.7 | 92 | 2.5 | 63 |
| SSSP-20-5S-7G-9BC-3430 | 20 | 0.188 | 5 | 9" sq. | 9 | 3/4"x30" | 20.0 | 250 | 20.0 | 250 | 20.0 | 250 | 20.0 | 250 | 20.0 | 250 | 20.0 | 250 | 17.9 | 250 | 14.4 | 250 | 11.6 | 250 | 9.3 | 232 | 7.4 | 184 | 5.8 | 144 |
| SSSP-22-4S-11G-12BC-136 | 22 | 0.120 | 4 | 12" sq. | 12 | 1"x36" | 20.0 | 250 | 16.7 | 250 | 12.4 | 250 | 9.2 | 231 | 7.9 | 198 | 6.8 | 169 | 4.9 | 123 | 3.4 | 85 | 2.2 | 60 | 1.2 | 60 | 0.4 | 60 | 0.0 | - |
| SSSP-22-4S-7G-12BC-136 | 22 | 0.188 | 4 | 12" sq. | 12 | 1"x36" | 20.0 | 250 | 20.0 | 250 | 19.2 | 250 | 14.8 | 250 | 13.0 | 250 | 11.5 | 250 | 8.9 | 223 | 6.8 | 171 | 5.2 | 130 | 3.8 | 96 | 2.7 | 68 | 1.8 | 60 |
| SSSP-22-5S-11G-12BC-136 | 22 | 0.120 | 5 | 12" sq. | 12 | 1"x36" | 20.0 | 250 | 20.0 | 250 | 19.3 | 250 | 14.6 | 250 | 12.7 | 250 | 11.0 | 250 | 8.2 | 206 | 6.0 | 151 | 4.2 | 106 | 2.8 | 71 | 1.6 | 60 | 0.6 | 60 |
| SSSP-22-5S-7G-12BC-136 | 22 | 0.188 | 5 | 12" sq. | 12 | 1"x36" | 20.0 | 250 | 20.0 | 250 | 20.0 | 250 | 20.0 | 250 | 20.0 | 250 | 20.0 | 250 | 15.9 | 250 | 12.6 | 250 | 10.0 | 250 | 7.9 | 197 | 6.1 | 152 | 4.6 | 116 |
| SSSP-24-4S-11G-12BC-136 | 24 | 0.120 | 4 | 12" sq. | 12 | 1"x36" | 19.6 | 250 | 14.0 | 250 | 10.4 | 250 | 7.2 | 180 | 6.0 | 150 | 5.2 | 130 | 3.2 | 80 | 1.8 | 60 | 1.0 | 60 | 0.0 | - | 0.0 | - | 0.0 | - |
| SSSP-24-4S-7G-12BC-136 | 24 | 0.188 | 4 | 12" sq. | 12 | 1"x36" | 20.0 | 250 | 20.0 | 250 | 16.4 | 250 | 12.4 | 250 | 10.8 | 250 | 9.4 | 234 | 7.0 | 175 | 5.1 | 128 | 3.6 | 90 | 2.4 | 60 | 1.4 | 60 | 0.5 | 60 |
| SSSP-24-5S-11G-12BC-136 | 24 | 0.120 | 5 | 12" sq. | 12 | 1"x36" | 20.0 | 250 | 20.0 | 250 | 16.2 | 250 | 11.9 | 250 | 10.1 | 250 | 8.6 | 215 | 6.1 | 152 | 4.1 | 101 | 2.4 | 61 | 1.1 | 60 | 0.0 | - | 0.0 | - |
| SSSP-24-5S-7G-12BC-136 | 24 | 0.188 | 5 | 12" sq. | 12 | 1"x36" | 20.0 | 250 | 20.0 | 250 | 20.0 | 250 | 20.0 | 250 | 19.1 | 250 | 16.9 | 250 | 13.1 | 250 | 10.1 | 250 | 7.7 | 192 | 5.8 | 144 | 4.1 | 103 | 2.7 | 68 |
| SSSP-25-4S-11G-12BC-136 | 25 | 0.120 | 4 | 12" sq. | 12 | 1"x36" | 18.2 | 250 | 13.2 | 250 | 9.4 | 235 | 6.6 | 165 | 5.4 | 135 | 4.4 | 110 | 2.8 | 70 | 1.2 | 60 | 0.4 | 60 | 0.0 | - | 0.0 | - | 0.0 | - |
| SSSP-25-4S-7G-12BC-136 | 25 | 0.188 | 4 | 12" sq. | 12 | 1"x36" | 20.0 | 250 | 20.0 | 250 | 15.1 | 250 | 11.3 | 250 | 9.8 | 244 | 8.4 | 210 | 6.1 | 153 | 4.3 | 108 | 2.9 | 71 | 1.7 | 60 | 0.7 | 60 | 0.0 | - |
| SSSP-25-5S-11G-12BC-136 | 25 | 0.120 | 5 | 12" sq. | 12 | 1"x36" | 20.0 | 250 | 20.0 | 250 | 14.7 | 250 | 10.6 | 250 | 9.0 | 224 | 7.5 | 188 | 5.1 | 127 | 3.1 | 78 | 1.6 | 60 | 0.3 | 60 | 0.0 | - | 0.0 | - |
| SSSP-25-5S-7G-12BC-136 | 25 | 0.188 | 5 | 12" sq. | 12 | 1"x36" | 20.0 | 250 | 20.0 | 250 | 20.0 | 250 | 20.0 | 250 | 17.6 | 250 | 15.4 | 250 | 11.8 | 250 | 8.9 | 223 | 6.7 | 166 | 4.7 | 118 | 3.2 | 80 | 1.9 | 60 |
| SSSP-30-6S-7G-12BC-136 | 30 | 0.188 | 6 | 12" sq. | 12 | 1"x36" | 20.0 | 250 | 20.0 | 250 | 20.0 | 250 | 16.6 | 250 | 14.0 | 250 | 11.8 | 250 | 8.0 | 201 | 5.1 | 126 | 2.7 | 66 | 0.7 | 60 | 0.0 | - | 0.0 | - |
| SSSP-32-5S-7G-12BC-136 | 32 | 0.188 | 5 | 12" sq. | 12 | 1"x36" | 20.0 | 250 | 20.0 | 250 | 17.5 | 250 | 13.0 | 250 | 11.2 | 250 | 9.6 | 239 | 6.9 | 173 | 4.8 | 119 | 3.1 | 77 | 1.7 | 60 | 0.6 | 60 | 0.0 | - |
| SSSP-32-6S-7G-12BC-136 | 32 | 0.188 | 6 | 12" sq. | 12 | 1"x36" | 20.0 | 250 | 20.0 | 250 | 20.0 | 250 | 16.4 | 250 | 14.1 | 250 | 12.1 | 250 | 8.8 | 219 | 6.2 | 154 | 4.0 | 101 | 2.3 | 60 | 0.9 | 60 | 0.0 | - |
| SSSP-35-5S-7G-12BC-136 | 35 | 0.188 | 5 | 12" sq. | 12 | 1"x36" | 20.0 | 250 | 19.3 | 250 | 13.8 | 250 | 9.6 | 240 | 8.0 | 199 | 6.5 | 162 | 4.1 | 102 | 2.1 | 60 | 0.6 | 60 | 0.0 | - | 0.0 | - | 0.0 | - |
| SSSP-35-6S-7G-12BC-136 | 35 | 0.188 | 6 | 12" sq. | 12 | 1"x36" | 20.0 | 250 | 20.0 | 250 | 17.3 | 250 | 12.2 | 250 | 10.1 | 250 | 8.3 | 207 | 5.3 | 132 | 2.9 | 72 | 1.0 | 60 | 0.0 | - | 0.0 | - | 0.0 | - |
| SSSP-40-5S-7G-12BC-136 | 40 | 0.188 | 5 | 12" sq. | 12 | 1"x36" | 20.0 | 250 | 13.2 | 250 | 8.4 | 210 | 4.8 | 120 | 3.3 | 83 | 2.0 | 60 | 0.0 | - | 0.0 | - | 0.0 | - | 0.0 | - | 0.0 | - | 0.0 | - |
| SSSP-40-6S-7G-12BC-136 | 40 | 0.188 | 6 | 12" sq. | 12 | 1"x36" | 20.0 | 250 | 16.7 | 250 | 10.7 | 250 | 6.2 | 155 | 4.4 | 110 | 2.8 | 70 | 0.1 | 60 | 0.0 | - | 0.0 | - | 0.0 | - | 0.0 | - | 0.0 | - |

*Pole Assemblies With EPA>9.0 Require Specific Review

CAUTION: Installation of poles without luminaire(s) will compromise pole strength. Any accessories attached to the pole, or other modifications done in the field, will compromise the pole strength and may result in pole failure. Wind load evaluations and provisions for appendages such as banner arms, signage, cameras, etc., must be evaluated and approved by the factory prior to placing an order. Additional evaluation and approval should be performed by the customer's local structural engineer on the project.

***Anchor Bolts are NOT included with Custom Bolt Circle.
*Do NOT pour concrete referencing this drawing. Consult Factory.**

***All wind loading calculations are based on sustained wind force plus an additional 1.3 gust.**



701 Kingshill Place, Carson, CA 90746
Call Us Today (310) 341-2037

nslighting.com

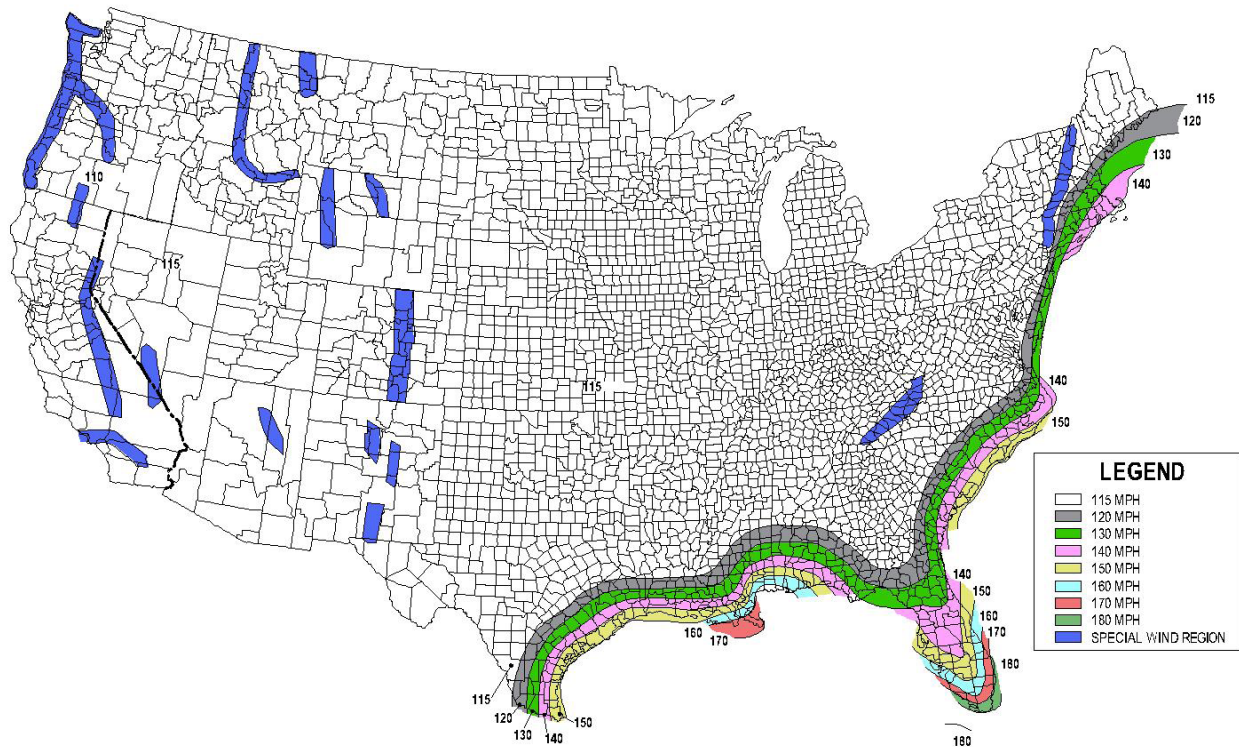
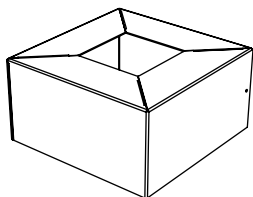
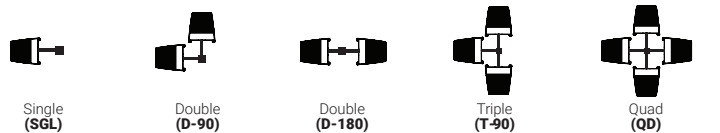


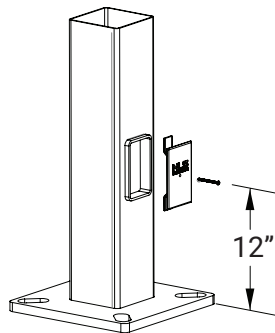
FIG. 3.8-1b - 700-Year MRI Basic Wind Speed, mph (AASHTO LRFDLTS-1)

- 1) All wind load calculations are based on sustained wind force plus and additional 1.3 gust
- 2) Wind Map is to be used as a reference only. Please coordinate with local agencies for further review.
- 3) Wind Map values are based on a 50 year mean recurrence. These values do not account for severe conditions, such as hurricanes, tornadoes, etc...
- 4) For review of poles with additional configurations (arms, banners, shorter/longer pole lengths, etc...), please contact factory.

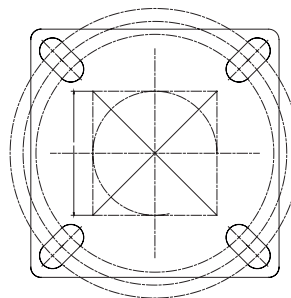
MOUNTING CONFIGURATION



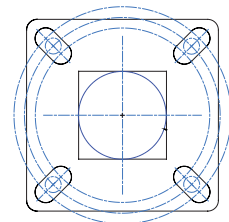
Base Cover



Base Detail



12" Base Detail



9" Base Detail