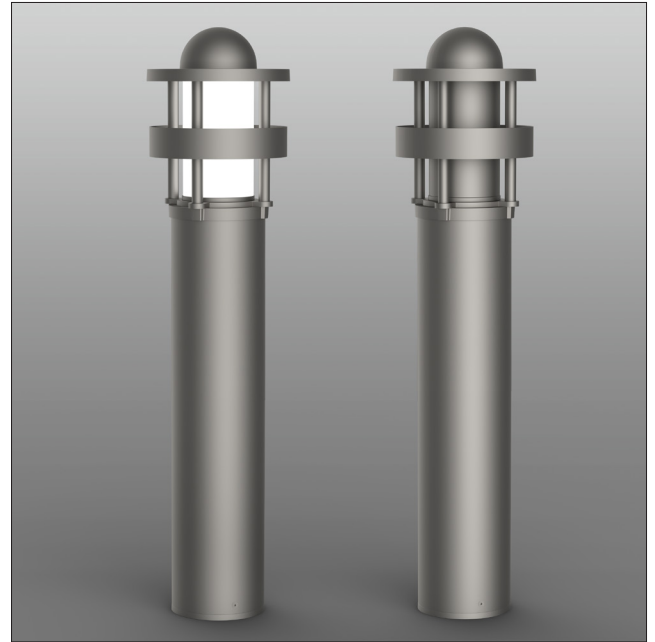


The Westfield Impact Bollard combines security, style, and impact resistance that blends beautifully into any pathway environment while protecting from traffic intrusion. Tested with the ASTM F3016 industry standard, the 8" version offers a S20 impact rating (rated to stop a 5,000 lb vehicle up to 27.4 mph).

LED wattage ranges from 18 to 33 using 16 LEDs with Opal standard lens. The Westfield Bollard casts a beautiful combination of uniform direct and indirect illumination to enhance any marine, retail, or residential upscale project. Kelvin temperature offering of 3000K, 4000K, and 5000K.

Built to conform to the strictest Made in America standards. Designed, tooled, fabricated, and assembled in the USA.



LED WATTAGE CHART

	16L
350 milliamps	18w
530 milliamps	25w
700 milliamps	33w

Project Name _____ Type: _____

--	--	--	--	--	--	--	--	--	--	--

Cat#	Height	Shaft Dim	Lit/UnLit	Light Dist.	# of LEDs	Milliamps	Kelvin	Volts	Color	Options
Westfield Impact Bollard (WFB-IMP)	53.5" (53)	8" Round Impact Rated up to 27.4 MPH (8R-S20)	Lit (LIT)	Type 5 (T5)	16 (16L)	350 (35)	3000K, 70 CRI (30K7)	120-277 (UNV)	Bronze Textured (BRZ)	Button Photocell (PC) ❶
			UnLit ❷ (UNL)			530 (53)	4000K, 70 CRI (40K7)	347-480 (HV)	White Textured (WHT)	Marine Grade Finish (MGF)
						700 (7)	5000K, 70 CRI (50K7)	Smooth White Gloss (SWT)	Emergency Battery Back-Up (EM)	
						Silver (SVR)	House Side Shield (HSS)			
						Black Textured (BLK)				
Smooth Black Gloss (SBK)										
Graphite Textured (GPH)										
Grey Textured (GRY)										
Custom (CS)										

Notes:

- ❶ Universal Voltage 120-277
- ❷ If Unlit is selected the following categories will not be available: Light Distribution, # of LEDs, Milliamps, Kelvin, Volts, Photocell, and House Side Shield

PRODUCT SPECIFICATIONS

ELECTRICAL

- 120-277 Volts (UNV) or 347-480 Volts (HV)
- 0-10V dimming driver
- Driver power factor at maximum load is $\geq .95$, THD maximum load is 15%
- LED Drivers Ambient Temp. Min is -40°C and Ambient Temp. Max ranges from 50°C to 55°C and, in some cases, even higher. Consult the factory for revalidation by providing the fixture catalog string before quoting and specifying it.
- All internal wiring UL certified for 600 VAC and 105°C
- CRI 70
- Color temperatures: 3000K, 4000K, or 5000K
- Surge Protection: 20kA supplied as standard.

CONSTRUCTION

- Extruded Aluminum. Cast Aluminum.

OPTIONS

- MARINE GRADE FINISH (MGF) - A multi-step process creating protective finishing coat against harsh environments. Chemically washed in a 5 stage cleaning system. Pre-baked, Powder coated 3-5 mils of Zinc Rich Super Durable Polyester Primer. Oven Baked. Finished Powder Coating of Super Durable Polyester Powder Coat 3-5 mil thickness.

- CLEAR LENS (CL)

- EMERGENCY BATTERY BACK-UP (EB)
 - 100-277 VAC \pm 10%, 50/60 Hz Input Voltage
 - 43mA Max. Input Current
 - 2.82W Max. Input Power
 - 24-48 Hours Recharge Time
 - Battery Type NiCd 9.6VDC or LiFePO4 9.6VDC
 - 90 Minutes Min. Illumination Time
 - 20W Total Max. LED Powered
 - Class 2 Output Classification

- HOUSE SIDE SHIELD (HSS)

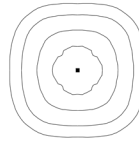
CONTROL OPTIONS

- PHOTOCELL (PC) - Button Type
- Controls Agnostic: Please contact factory for your preferred controls option.

LIGHT DISTRIBUTION

Utilizes a linear diffused pattern, softening the light distribution and eliminating any dark shadows or striations.

- IES Types



TYPE V (T5)

FINISH

- 3-5 mils electrostatic powder coat.
- NLS Lighting standard high-quality finishes prevent corrosion and protects against extreme environmental conditions

WARRANTY

Five-year limited warranty for drivers and LEDs.



The information and specifications on this document are subject to change without any notification. All values are design, nominal, or typical or prorated values when measured under internal and external laboratory conditions.



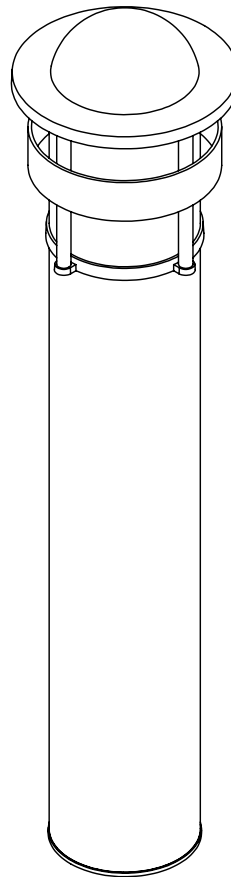
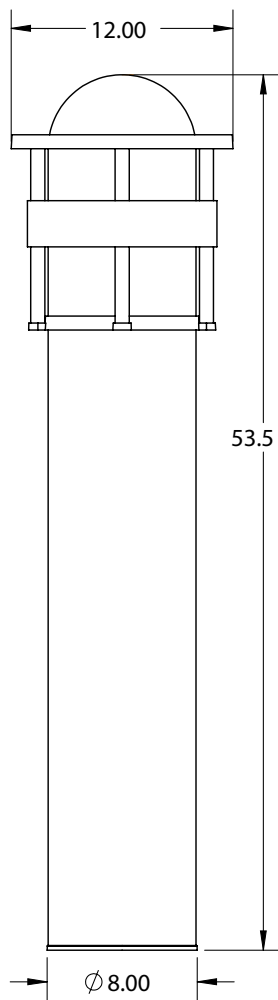
701 Kingshill Place, Carson, CA 90746
Call Us Today (310) 341-2037

nlsighting.com

PRODUCT SPECIFICATIONS

WESTFIELD IMPACT BOLLARD - LUMEN DATA CHART

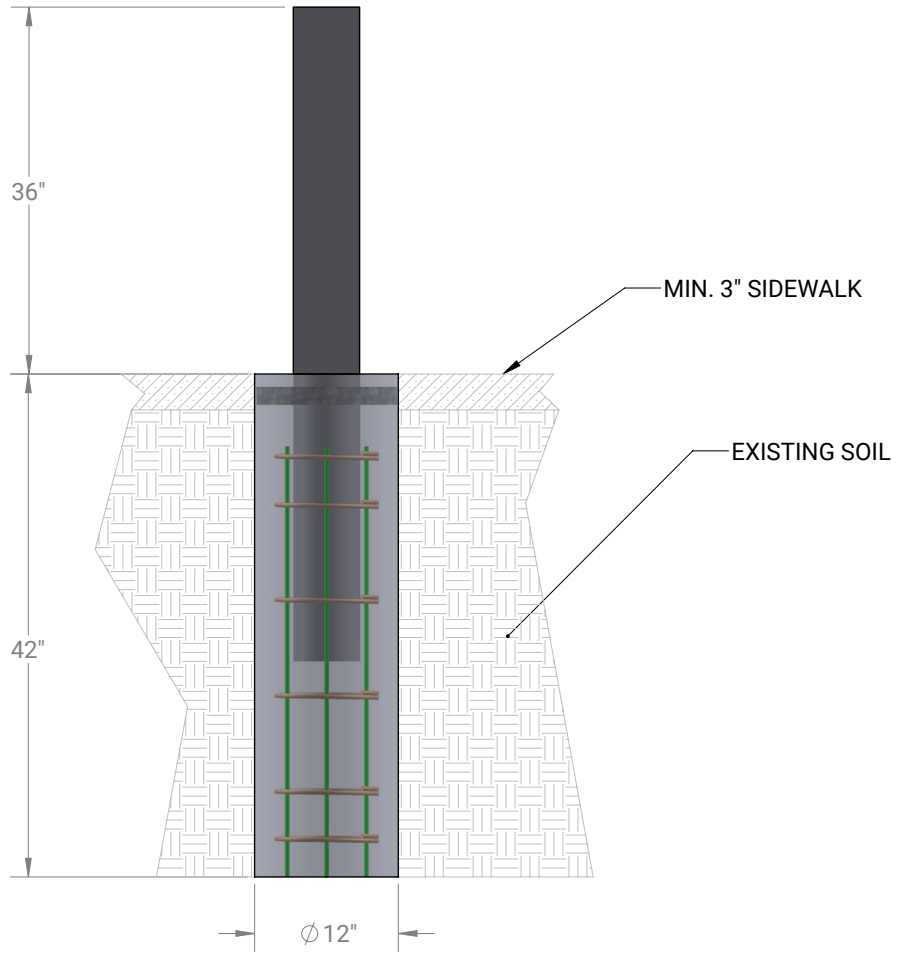
PART NUMBER	T5 LUMENS	Lm/W	WATTS
WFB-1-53-16L-35-30K	1008	56	18
WFB-1-53-16L-35-40K	1080	60	18
WFB-1-53-16L-35-50K	1152	64	18
WFB-1-53-16L-53-30K	1400	56	25
WFB-1-53-16L-53-40K	1500	60	25
WFB-1-53-16L-53-50K	1600	64	25
WFB-1-53-16L-7-30K	1848	56	33
WFB-1-53-16L-7-40K	1980	60	33
WFB-1-53-16L-7-50K	2112	64	33



DIMENSION	
Height	53.5"
Width Bottom	8"
Width Top	12"

WEIGHT	WFB-1
	24 LBS

PRODUCT SPECIFICATIONS



Mounting

*In-ground cement with rebar support cage
(refer to installation instructions)*