

MIMIK 10 BOLLARD

PERFORMANCE
IN LIGHTING

powered by
GEWISS



Pathway bollard series. Fixtures consist of:

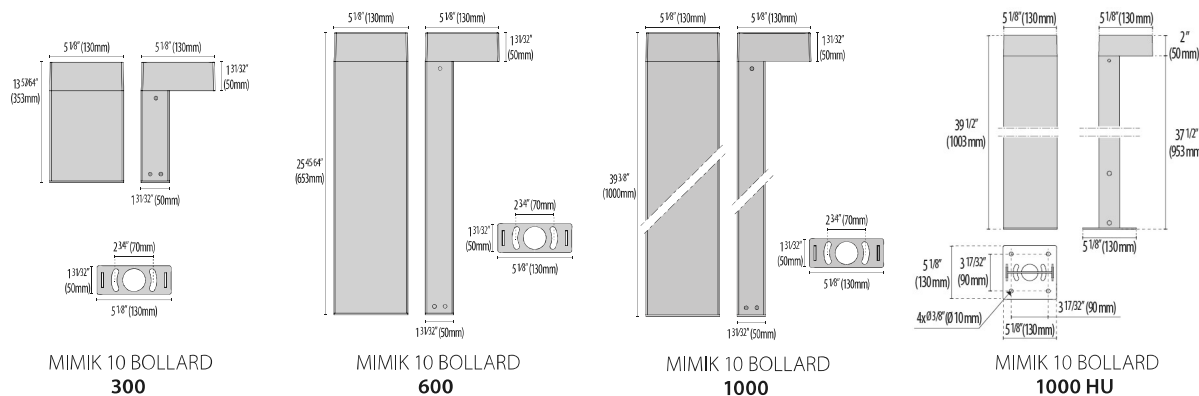
- Multi-step powder-coat painting process, optimized against UV rays and corrosion.
- Copper-free (<1%) precision die-cast aluminum housing and ring/faceplate.
- Copper-free (<1%) aluminum extruded post.
- Extra-clear, tempered, silk-screened, flat glass diffuser.
- Custom molded, anti-aging gasket(s).
- Stainless steel external hardware.
- Custom MCPCB utilized to maximize heat dissipation and promote long LED life.
- Type II light distribution.
- Input voltage: 120-277 V (50 / 60 Hz), integral driver.
- Optional, integral, line-voltage, passive infrared motion sensor (PIR SENSOR versions).

- Pre-wired factory sealed cable for external electrical connection included.
- Steel ground base plate included for bollards.
- Steel ground base plate available as accessory for HU versions (ordered separately).
- The luminaire may be configured with numerous options and multiple standard finishes. Not all options are available in all configurations. Consult factory for more information about specification sheet details to build your light.
- Product meets Buy American Act (BAA) requirements within ARRA.
- 5-year warranty.



FINISHES

- AN-96 / Iron gray / Textured
- GR-94 / Aluminum metallic / Textured
- BK-81 / Black / Textured
- WH-87 / White / Textured
- RB-10 / Iron rust / Textured



Scan here
for installation
instructions

PERFORMANCE IN LIGHTING reserves the right to make all necessary changes without prior notice

PERFORMANCE IN LIGHTING USA, Inc.
2621 Keys Pointe Conyers GA 30013 - United States
Tel: 770 822 2115

info.usa@pil.lighting
www.performanceinlighting.com/us

REVISION 02
08/23

Order Guide – MIMIK 10 BOLLARD

Order code example:



SERIES	Bollard Height	Wattage	Optics	CCT	Finish	Voltage	Controls	Accessories
M10BOL Mimik 10 Bollard	300 14 inch*	10W 10 watt*	T2 Type 2 (11W Max)	27K 2700K	BK Textured Black	UNV 120-277V*	NA Non Dim*	GFCI 20 amp outlet
	600 26 inch*	11W 11 watt*	T3 Type 3 (10W Max)	3K 3000K*	IG Iron Gray*	120V 120V Only	0-10V 0-10V Dim	OCC Occupancy sensor
	1000 39 inch*	XX Specify wattage must be within range		35K 3500K	AM Aluminum Metallic*		ELV ELV Dim	LB Large Base (all sizes)
	1000HU 39 inch Heavy Use*			4K 4000K*	WH Textured White			WG Wood Grain accent
	XX Specify Height (10 inch min)	*Standard Wattages		5K 5000K	IR Iron Rust			DBL Double head fixture ELV Dim
		T2- 10W T3- 11W		65K 6500K	CC Custom Color			SIGN Custom Signage
				RED Static Red				
				BLU Static Blue				
				GRN Static Green				
				AMB Static Amber				

STANDARD OPTION, SHORTER LEAD TIME, NO MOQ
70 CRI STANDARD - OTHER OPTIONS AVAILABLE

Options
Shown on
Next Page

MIMIK 10 BOLLARD

PERFORMANCE
IN LIGHTING

powered by
GEWISS

GFCI / USB



Occupancy Sensor



Wood Grain Accent



Sign



Large Base



Double Head Fixture



REQUIRED FOR INSTALLATION 1000 HU Only - Standard base provided with each non-HU fixture

DESCRIPTION	FINISH	PART NUMBER
MIMIK 10 BOLLARD 1000		
Plate HU MIMIK10 POST AM		3112991
Plate HU MIMIK10 POST IG		3112992



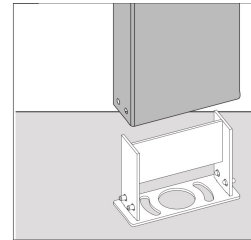
3112991



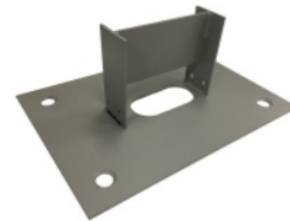
3112992

This fixture has three base options.

STANDARD BASE - AVAILABLE FOR ALL SIZES (NON-HU)



LARGE BASE - AVAILABLE FOR ALL SIZES (NON-HU)



HU BASE - AVAILABLE FOR 1000 HU VERSIONS ONLY



PERFORMANCE IN LIGHTING reserves the right to make all necessary changes without prior notice

PERFORMANCE IN LIGHTING USA, Inc.
2621 Keys Pointe Conyers GA 30013 - United States
Tel: 770 822 2115

info.usa@pil.lighting
www.performanceinlighting.com/us

REVISION 02
08/23

MIMIK 10 BOLLARD

PERFORMANCE
iN LIGHTING

powered by
GEWISS

LUMEN OUTPUT Distributed Lumen Output

MIMIK 10 BOLLARD (70CRI)						
	2700K	3000K	3500K	4000K	5000K	6500K
10W	614	633	652	671	690	709
11W	659	744	829	915	1000	1085

70 CRI STANDARD - OTHER OPTIONS AVAILABLE