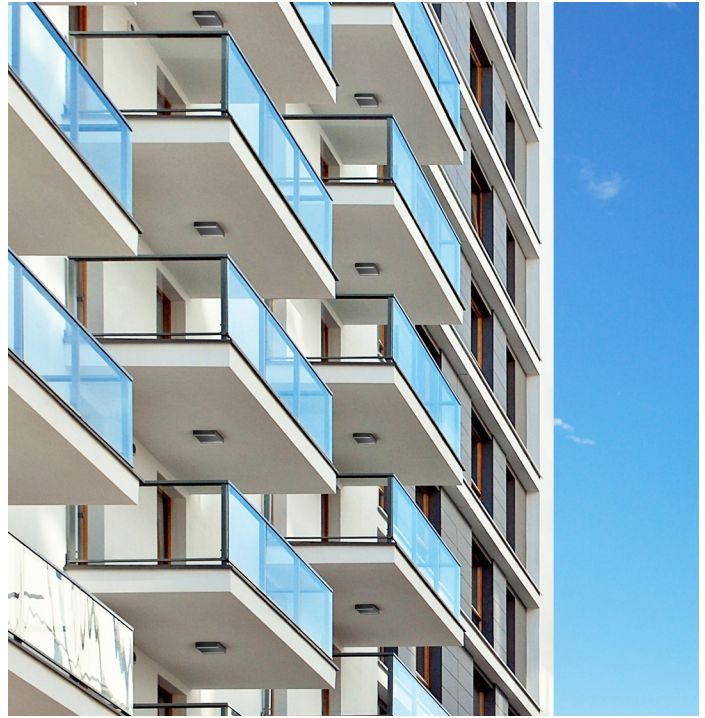
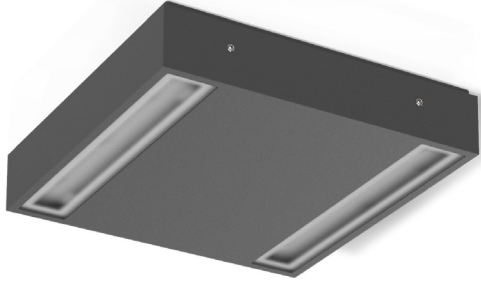


# MIMIK 20 CEILING



Ceiling- and wall- mount series. Fixtures consist of:

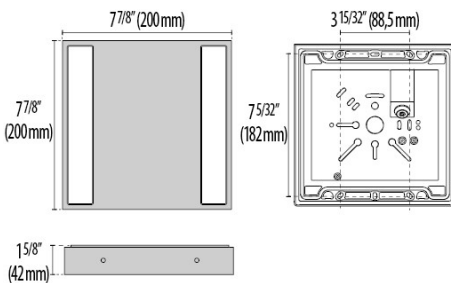
- Multi-step powder-coat painting process, optimized against UV rays and corrosion.
- Copper-free precision die-cast aluminum housing and mounting plate.
- Micro-prismatic patterned, flat, tempered silk-screened soda-lime glass diffuser (FLAT versions).
- Custom molded, anti-aging gasket(s).
- Stainless steel external hardware.
- Custom MCPCB utilized to maximize heat dissipation and promote a long LED life.

- 100° x 100° beam angle (S/EW).
- Input voltage: 120-277 V (50 / 60 Hz), integral 0-10 V dimming driver.
- Consult factory for dimming options, custom finishes (please specify RAL color), and non-cataloged CCT (Kelvin) options including static colors.
- Product meets Buy American Act requirements within ARRA.
- 5-year warranty.
- Marine Grade finish.
- Suitable for Natatorium applications.



## FINISHES

- AN-96 / Iron gray / Textured
- GR-94 / Aluminum metallic / Textured
- WH-87 / White / Textured
- BK-81 / Black / Textured
- RB-10 / Iron rust / Textured



MIMIK  
20 CEILING

Scan here  
for installation  
instructions



Lumen Output	27K	3K	35K	4K	5K
Mimik 20 Ceiling	1844	1869	1893	1918	1942

24W Max Wattage

# Order Guide - Mimik 20 Ceiling



Order code example

**M20C-24-AM-3K-120-NA**

## M20C

Wattage	Finish	Kelvin	Voltage	Controls	Accessories
<b>24W</b> 24 watt (max)	<b>AM</b> Aluminum Metallic	<b>27K</b> 2700k	<b>UNV</b> 120-277V	<b>NA</b> Non Dimming	
<b>XX</b> Specify Wattage Must be below max	<b>IG</b> Iron Gray	<b>3K</b> 3000k		<b>0-10V</b> 0-10V Dimming	
	<b>IR</b> Iron Rust	<b>35K</b> 3500k		<b>ELV</b> ELV Dimming	
	<b>BK</b> Textured Black	<b>4K</b> 4000k			
	<b>WH</b> Textured White	<b>5K</b> 5000k			
	<b>CC</b> Custom Color	<b>65K</b> 6500k			
		<b>RED</b> Static Red			
		<b>GRN</b> Static Green			
		<b>BLU</b> Static Blue			
		<b>AMB</b> Static Amber			