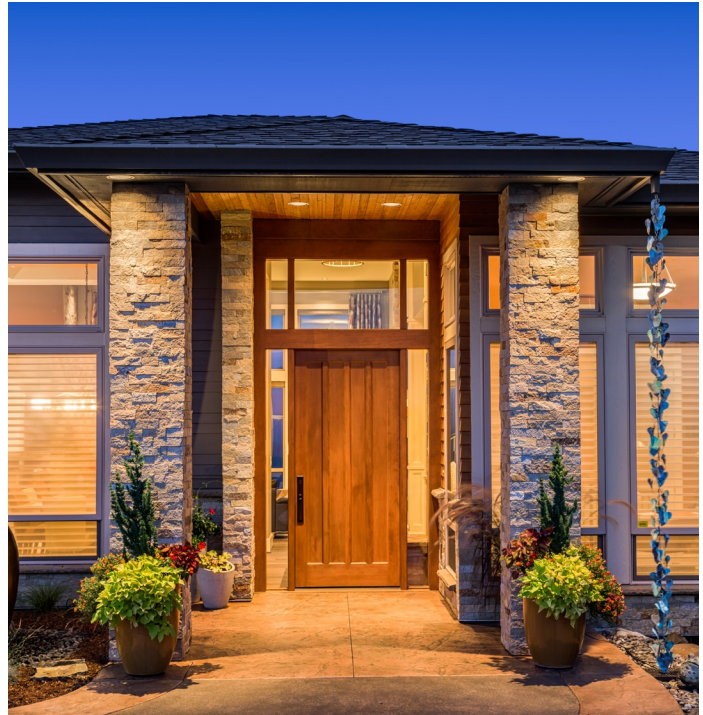
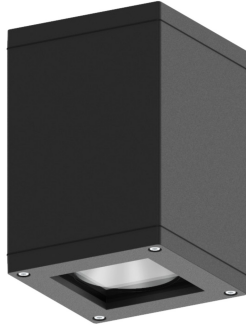


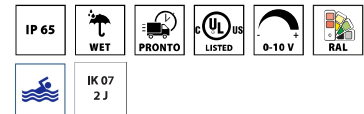
Q-CEILING



Ceiling mount series. Fixtures consist of:

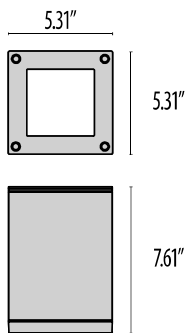
- Multi-step powder-coat painting process, optimized against UV rays and corrosion.
- Copper-free extruded aluminum housing and copper-free precision die-cast aluminum ring/faceplate, bracket and mounting plate.
- Extra-clear, tempered, silk-screened, flat glass diffuser.
- Custom molded, anti-aging gasket(s).
- Stainless steel external hardware.
- High-efficiency COB, combined with an optimized passive cooling system, provides a long LED life.
- Internal specular reflector coated with 5-layers of PVD 99.98% pure aluminum providing >95% reflection.
- Circular Intensive beam angle (C/I).

- Circular Medium beam angle (C/M).
- Diffuse light emission (SOFT).
- Input voltage: 120-277 V (50 / 60 Hz), integral 0-10 V dimming driver.
- Five optional finishes available. Add finish suffix to any part number for textured Black (BK-81), Iron gray (AN-96), Aluminum metallic (GR-94), White (WH-87), Iron rust (RB-10) when not standard.
- Consult factory for dimming options, marine-grade, custom finishes (please specify RAL color), and non-cataloged CCT (Kelvin) options including static colors.
- Product meets Buy American Act requirements within ARRA.
- 5-year warranty.
- Marine Grade finish .
- Suitable for Natatorium applications.



FINISHES

- AN-96 / Iron gray / Textured
- GR-94 / Aluminum metallic / Textured
- WH-87 / White / Textured
- BK-81 / Black / Textured
- RB-10 / Iron rust / Textured



Q
CEILING

Lumen Output 30W	27K	3K	35K	4K	5K
Q-Ceiling 20°	2784	2876	2968	3061	3153
Q-Ceiling 40°	2769	2861	2953	3045	3137
Q-Ceiling 85°	2804	2897	2990	3084	3177
Q-Ceiling Soft	2190	2270	2350	2430	2510

Scan here
for installation
instructions



Order Guide - Q-CEILING

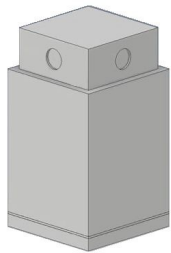


Order code example

QCE-30W-C/I-IG-3K-277-ELV

QCE-

Wattage	Optics	Finish	Kelvin	Voltage	Controls	Accessories
16W 16 watt (AMB Max)	C/I 20° Beam	AM Aluminum Metallic	27K 2700k	UNV 120-277V	NA Non Dimming 0-10V 0-10V Dimming ELV ELV Dimming	CON Surface Mounted J-box with Conduit Entry REM Remote mounted Emergency battery back-up
18W 18 watt	C/M 40° Beam	IG Iron Gray	3K 3000k			
20W 20 watt	C/EW 85° Beam	IR Iron Rust	35K 3500k			
30W 30 watt (max)	SOFT Diffused light	IR Iron Rust	4K 4000k			
XX Specify wattage must be under max		BK Textured Black	5K 5000K			
		WH Textured White	RED Red			
		CC Custom Color	BLU Blue			
			GRN Green			
			AMB Amber (16W max)			
			RGBW RGBW Contact factory for control details			



CON

**Surface Mounted
J-box with Conduit Entry**

Performance in Lighting reserves the right to make all necessary changes without prior notice.

Performance in Lighting - 2621 Keys Pointe - Conyers, Georgia 30013 - USA - voice 770.822.2115 - info.usa@pil.lighting
www.performanceinlighting.com

Revision 03
02/23