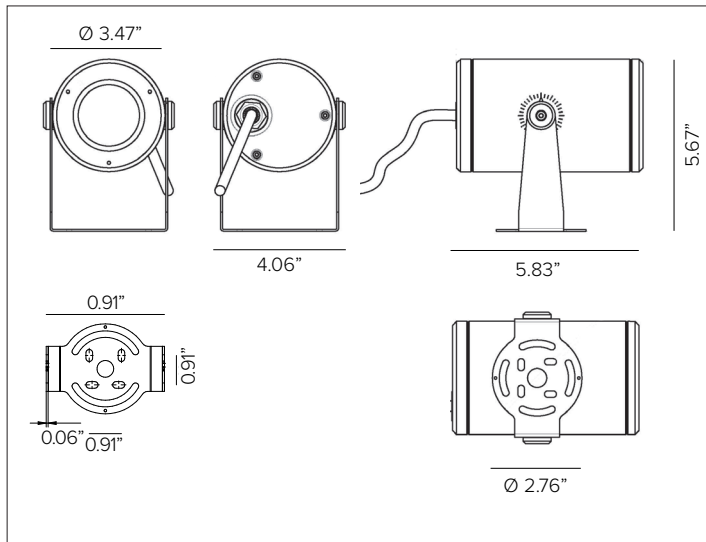


# DART ROUND SMALL

## Compact Adjustable Professional Floodlight



DART ROUND SMALL INTEGRAL shown in Ferrite Dark Grey finish.



### CONCEPT

Small footprint fully adjustable LED projector.

### MECHANICAL CHARACTERISTICS

<b>Dimensions</b>	5.67"H x 4.06"W x 5.83"D
<b>Materials</b>	Die-cast aluminum powder coated body and joints for maximum heat dissipation.
<b>Finish</b>	Textured finish. ● Ferrite Dark Grey   ● Heritage Brown   ● Bronze ● Black   ● White   ● Sandstone Grey
<b>Power Connection</b>	Provided with 10ft SJ00W 16-6 cable.
<b>Functionality</b>	Adjustable up to ±60° on the horizontal plane with slotted mounting base and +90°/-45° on the vertical plane with aim locking set screw.
<b>Mounting</b>	Fixture can be installed directly to mounting surface or used with optional mounting installation accessories.
<b>Weight</b>	3.5lbs
<b>Protection</b>	IP66
<b>Impact</b>	IK10

### CERTIFICATIONS

cULus Wet Location Listed.  
 Tested in accordance with LM-79-08.  
 Compliant with California energy regulations.  
 IEC 62471.  
 RoHS3 EU 215/863

### WARRANTY

5 year limited warranty

### SUSTAINABILITY

Luminaire designed for disposal/recycling at end-of-life. Replaceable LED light source and control gear by a Targetti technician.

### ELECTRICAL CHARACTERISTICS

<b>Power Supply</b>	Integrated 4/1 smart driver (Non-Dimmable / 0-10V / Reverse Phase / Forward Phase).
<b>Wattage</b>	4W (NSP) / 15W nominal (SP / FL / MWFL)
<b>Voltage</b>	Universal Voltage 120-277V AC 50/60Hz

### SOURCE

NSP uses high efficiency LED Emitter. SP, FL, and MWFL use high efficiency LED Chip on Board with optimized melanopic ratios.

TM30	CCT (Nominal)	CRI	Rf	Rg	MR	SDCM
	2700K	81	80	97	2	2
	3000K	82	82	97	2	2
	3500K	82	81	97	2	2
	4000K	82	81	97	2	2
	5000K	84	81	97	2	2

*Ra90 available upon request*

### OPTIC

Optical system is dependent on beam angle. NSP, SP and FL versions comprised with methacrylate lenses. MWFL version comprised of precision optics with convex reflective anodized aluminum facets.

Beam	NSP 5°	SP 16°	FL 30°	MWFL 48°
<b>Delivered Lumens</b>	<b>3000K</b> 162Lm	1212Lm	1239Lm	1477Lm
	<b>4000K</b> 175Lm	1282Lm	1249Lm	1489Lm

*For 2700K lumen values use multiplier of 0.96 from 3000K. For 3500K lumen values use multiplier of 1.02 from 3000K. For 5000K lumen values use multiplier of 1.02 from 4000K.*

<b>Efficacy</b>	99Lm/W max. Refer to photometric graphs for specific values.
<b>Lifetime</b>	NSP: L80/B10 60,000hrs at max TA +25°C SP/FL: L80/B10 80,000hrs at max TA +25°C MWFL: L80/B10 100,000hrs at max TA +25°C

**Photobiological Classification** Low risk safety RG1

# DART ROUND SMALL

## SPECIFICATION INFORMATION

DRS

1 2 3 4 5 6 7 8 9

Ex: DRSRPFEL2SP30

OPTIONAL

1 - PRODUCT CODE	2 - DRIVER	3 - FINISH	4 - WATTAGE	5 - OPTIC	6 - KELVIN
<b>DRS</b> — DART ROUND SMALL	<b>41</b> — 4/1 Smart Dimming (Non-Dimming / 0-10V / Reverse Phase / Forward Phase)	<b>FE</b> — Ferrite Dark Grey <b>HB</b> — Heritage Brown <b>BZ</b> — Bronze <b>WT</b> — White <b>BT</b> — Black <b>SG</b> — Sandstone Grey <b>RAL</b> — <a href="#">Custom RAL</a>	<b>L1<sup>B</sup></b> — 4W <b>L2<sup>C</sup></b> — 15W	<b>NS</b> — NSP 5° <b>SP</b> — SP 16° <b>FL</b> — FL 30° <b>MF</b> — MWFL 48°	<b>27</b> — 2700K <b>30</b> — 3000K <b>35</b> — 3500K <b>40</b> — 4000K <b>50</b> — 5000K
7 - OPTIONAL	8 - EXTERNAL OPTICAL ACCESSORIES	9 - INSTALLATION ACCESSORIES			
<b>MG<sup>A</sup></b> — Marine Grade	<a href="#">Blade of Light Linear Spread Lens</a> <i>See section for details</i> <a href="#">Anti-glare Louver</a> <i>See section for details</i> <a href="#">Asymmetric Snoot</a> <i>See section for details</i> <a href="#">Symmetric Snoot</a> <i>See section for details</i> <a href="#">Symmetric Super Snoot</a> <i>See section for details</i>	<a href="#">Rotational Bracket</a> <i>See section for details</i> <a href="#">Earth spike</a> <i>See section for details</i> <a href="#">Back Plate</a> <i>See section for details</i>			

<sup>A</sup>Marine Grade is recommended for use in environments with occasional exposure to salt air, reclaimed water, fertilizers, chemical cleaners, or frequent pressure washing (steam) cleaning. Fixture housing complete with marine grade cathaphoresis suitable for use in marine grade environments. Not to be in direct contact with salt or corrosive agents for extended periods of time.

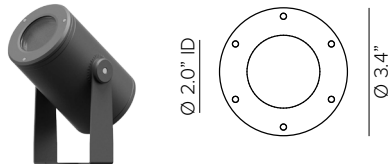
<sup>B</sup>4W available with NSP only.

<sup>C</sup>15W available with SP, FL, and MWFL only.

# DART ROUND SMALL

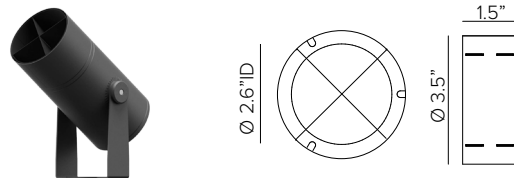
## 8 - EXTERNAL OPTICAL ACCESSORIES (OPTIONAL)

MAXIMUM OF TWO ACCESSORIES PER FIXTURE.



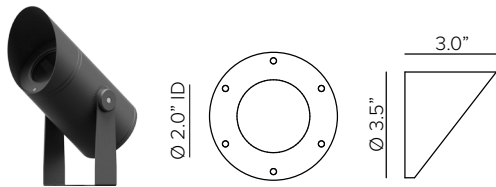
Blade Light Linear Spread Lens. PMMA holographic filter.

Part No. **1E4002 (\*)**



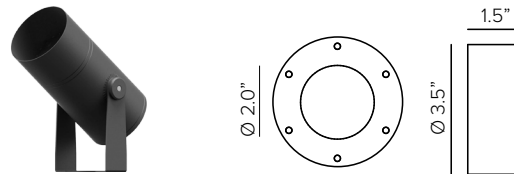
Anti glare louver with removable baffles for different levels of glare control. Powder coat stainless steel. Cutoff 103°. **Not compatible with 1E4003, 1E4004 or 1E4057.**

Part No. **1E4005 (\*)**



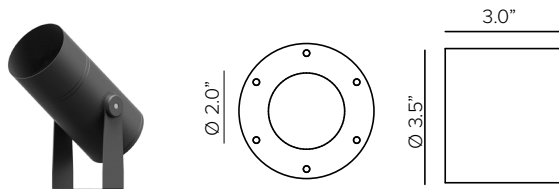
Asymmetric snoot. Powder coated stainless steel. Cutoff 53°. **Not compatible with 1E4004, 1E4005 or 1E4057.**

Part No. **1E4003 (\*)**



Symmetric snoot. Powder coated stainless steel. Cutoff 109°. **Not compatible with 1E4003, 1E4005 or 1E4057.**

Part No. **1E4004 (\*)**



Symmetric super snoot. Powder coated stainless steel. Cutoff 53°. **Not compatible with 1E4003, 1E4004 or 1E4057.**

Part No. **1E4057 (\*)**

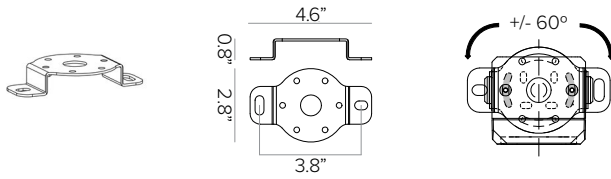
- Ferrite Dark Grey (*Default*)
- Heritage Brown (**HB**)\*
- Bronze (**BZ**)\*
- White (**WT**)\*
- Black (**BT**)\*
- Sandstone Grey (**SG**)\*

**\*Add suffix to end of number to identify finish (EX. 1E3015HB)**

# DART ROUND SMALL

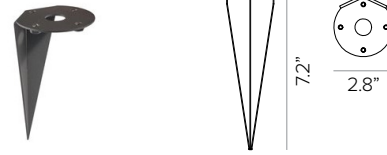
## 9 - INSTALLATION ACCESSORIES (OPTIONAL)

MAXIMUM OF ONE ACCESSORY PER FIXTURE



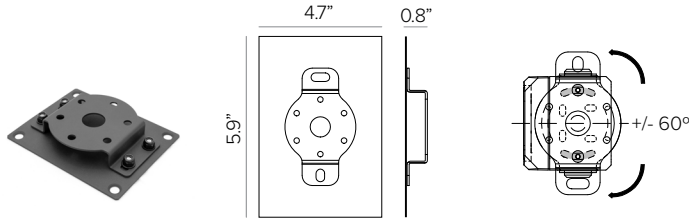
Rotational bracket for surface installation. Powder coated stainless steel.

Part No. **1E3015 (\*)**



Earth spike. Powder coated stainless steel.

Part No. **1E3016 (\*)**



Back plate with rotational bracket for surface mount installation. Powder coated stainless steel with Neoprene black foam. Included with 1E3015 and factory attached Stainless Steel black oxide bolts and locking nuts.

Part No. **1US3015 (\*)**

- Ferrite Dark Grey (*Default*)
- Heritage Brown (**HB**)\*
- Bronze (**BZ**)\*
- White (**WT**)\*
- Black (**BT**)\*
- Sandstone Grey (**SG**)\*

**\*Add suffix to end of number to identify finish (EX. 1E3015HB)**

# DART ROUND SMALL

## PHOTOMETRY

### NARROW SPOT

	3000K	H(m)	D(m)	Emax(lx)		
	Ra80		5°			
	Fixture Power	4W	1	0.09	10538	
	Source Flux	230lm	2	0.18	2635	
	Fixture Flux	162lm	3	0.27	1171	
	Efficacy	44lm/W	4	0.36	659	
	TS1657	Imax=45818cd/klm	Imax	10538cd	5	0.45

	4000K	H(m)	D(m)	Emax(lx)		
	Ra80		5°			
	Fixture Power	4W	1	0.09	11363	
	Source Flux	248lm	2	0.18	2841	
	Fixture Flux	175lm	3	0.27	1263	
	Efficacy	47lm/W	4	0.36	710	
	TS1657	Imax=45818cd/klm	Imax	11363cd	5	0.45

### SPOT

	3000K	H(m)	D(m)	Emax(lx)		
	Ra80		16°			
	Fixture Power	15W	1	0.28	12610	
	Source Flux	1742lm	2	0.56	3153	
	Fixture Flux	1212lm	3	0.84	1401	
	Efficacy	84lm/W	4	1.12	788	
	TS1658	Imax=7239cd/klm	Imax	12610cd	5	1.39

	4000K	H(m)	D(m)	Emax(lx)		
	Ra80		16°			
	Fixture Power	15W	1	0.28	13334	
	Source Flux	1842lm	2	0.56	3334	
	Fixture Flux	1282lm	3	0.84	1482	
	Efficacy	88lm/W	4	1.12	833	
	TS1658	Imax=7239cd/klm	Imax	13334cd	5	1.39

### FLOOD

	3000K	H(m)	D(m)	Emax(lx)		
	Ra80		30°			
	Fixture Power	14W	1	0.53	4160	
	Source Flux	1929lm	2	1.06	1040	
	Fixture Flux	1239lm	3	1.59	462	
	Efficacy	92lm/W	4	2.12	260	
	TS1659	Imax=2157cd/klm	Imax	4160cd	5	2.66

	4000K	H(m)	D(m)	Emax(lx)		
	Ra80		30°			
	Fixture Power	14W	1	0.53	4195	
	Source Flux	1945lm	2	1.06	1049	
	Fixture Flux	1249lm	3	1.59	466	
	Efficacy	93lm/W	4	2.12	262	
	TS1659	Imax=2157cd/klm	Imax	4195cd	5	2.66

### MEDIUM WIDE FLOOD

	3000K	H(m)	D(m)	Emax(lx)		
	Ra80		48°			
	Fixture Power	14W	1	0.89	2444	
	Source Flux	1937lm	2	1.77	611	
	Fixture Flux	1477lm	3	2.66	272	
	Efficacy	109lm/W	4	3.55	153	
	TS1660	Imax=1299cd/klm	Imax	2516cd	5	4.44

	4000K	H(m)	D(m)	Emax(lx)		
	Ra80		48°			
	Fixture Power	14W	1	0.89	2463	
	Source Flux	1952lm	2	1.77	616	
	Fixture Flux	1489lm	3	2.66	274	
	Efficacy	110lm/W	4	3.55	154	
	TS1660	Imax=1299cd/klm	Imax	2535cd	5	4.44