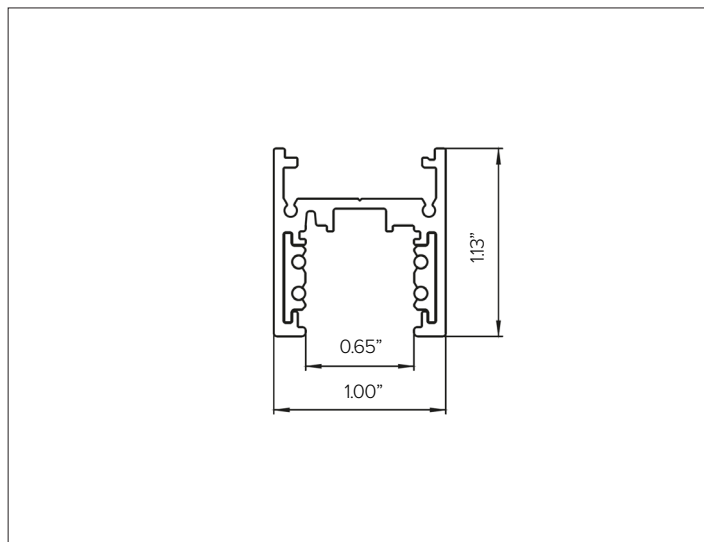


FORTYEIGHT MULTISYSTEM EVO TRACK - SURFACE/SUSPENSION

Surface / Suspension Track System



CONCEPT

Surface/suspension mounted electrified track system.

MECHANICAL CHARACTERISTICS

Dimensions	1.00"W X 1.13"H
Materials	Aluminum track with PVC insulated copper conductors that feed electricity to the fixture and provide attachment support.
Finish	<input type="radio"/> White <input checked="" type="radio"/> Black
Power Connection	Mechanical electrical polarized connections.
Functionality	Different mounting configurations are achievable using electrical feeds and connectors that make it possible to build a simple or complex systems.
Mounting	To be installed in surface or suspension configurations that is achieved through different available mounting options.
Protection	IP20

ELECTRICAL CHARACTERISTICS

Voltage	48V DC. Max of 30ft of track per individual power supply and/or max of 4 connectors per individual power supply.
Circuit	1 circuit, 4 conductor
Control	0-10V or DALI / Wireless Bluetooth Casambi

CERTIFICATIONS

cULus Class 2 Listed.
RoHS3 EU 215/863

WARRANTY

5 year limited warranty.

FORTYEIGHT MULTISYSTEM EVO TRACK - SURFACE/SUSPENSION

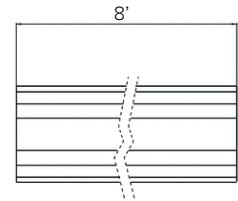
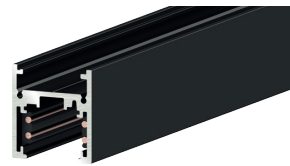
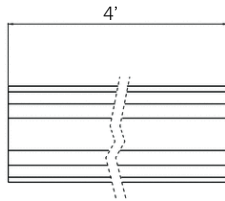
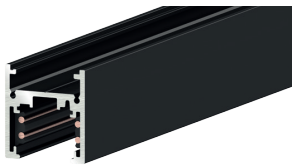
SPECIFICATION INFORMATION



Ex: 9500-UL4/B-ST6-E / 9504/ST6-B / 9504/ST6-B-F / S-9000/T / 9501-S-KL/B-E / S-9500/115-B / DELV30148JBX

1 - TRACK	2 - END CAP	3 - CUTTING TOOL	4 - ELECTRICAL FEED	5 - ELECTRICAL CONNECTOR	6 - MOUNTING	7 - MECHANICAL JOINT CONNECTOR	8 - INTERFACE	9 - POWER SUPPLY	10 - CONTROLLER
REQUIRED	REQUIRED	REQUIRED	REQUIRED	OPTIONAL	REQUIRED	OPTIONAL	OPTIONAL	REQUIRED	OPTIONAL

1 - TRACK (REQUIRED)



STUCCHI MULTISYSTEM EVO surface mounting track, field cuttable with specialized tool (REQUIRED).

Finish White Black

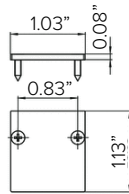
Part No. **9500-UL4/W-ST6-E** **9500-UL4/B-ST6-E**

STUCCHI MULTISYSTEM EVO surface mounting track, field cuttable with specialized tool (REQUIRED).

Finish White Black

Part No. **9500-UL8/W-ST6-E** **9500-UL8/B-ST6-E**

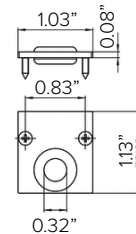
2 - END CAP (REQUIRED)



STUCCHI MULTISYSTEM EVO metal end cap, 1pc.

Finish White Black

Part No. **9504/ST6-W2** **9504/ST6-B**

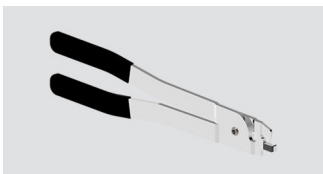


STUCCHI MULTISYSTEM EVO metal end cap with cable feed-through hole, 1pc.

Finish White Black

Part No. **9504/ST6-W2-F** **9504/ST6-B-F**

3 - CUTTING TOOL (REQUIRED)

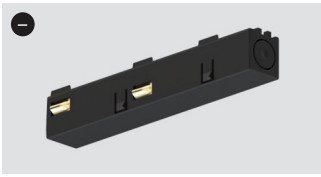


Cutting tool for track conductors.

Part No. **S-9000/T**

FORTYEIGHT MULTISYSTEM EVO TRACK - SURFACE/SUSPENSION

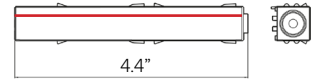
4 - ELECTRICAL FEED (REQUIRED)



Linear end feed polarity left.

Finish White Black

Part No. **9501-S-KL/W-E** **9501-S-KL/B-E**

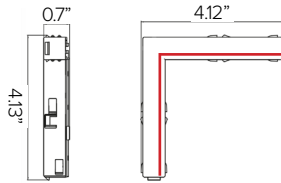


Linear end feed polarity right.

Finish White Black

Part No. **9501-S-KR/W-E** **9501-S-KR/B-E**

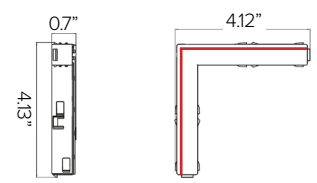
5 - ELECTRICAL CONNECTOR (OPTIONAL)



L – Polarized electrical joint connector, internal polarity. **Max of 5 connectors per individual power supply.**

Finish White Black

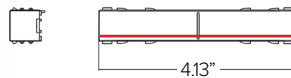
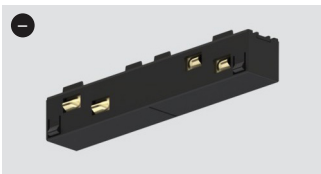
Part No. **9511-KI/W-E** **9511-KI/B-E**



L – Polarized electrical joint connector, external polarity. **Max of 5 connectors per individual power supply.**

Finish White Black

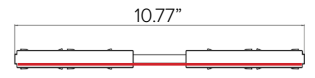
Part No. **9511-KE/W-E** **9511-KE/B-E**



Linear – Polarized electrical joint connector. **Max of 5 connectors per individual power supply.**

Finish White Black

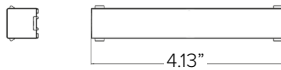
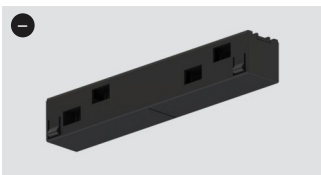
Part No. **9503-S-K/W-E** **9503-S-K/B-E**



Adjustable – Polarized electrical joint connector. **Max of 5 connectors per individual power supply.**

Finish White Black

Part No. **9518-S-K/W-E** **9518-S-K/B-E**



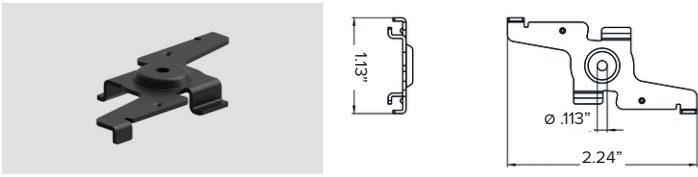
Aesthetic non-electric mechanical linear joint.

Finish White Black

Part No. **9503-S/W-M-E** **9503-S/B-M-E**

FORTYEIGHT MULTISYSTEM EVO TRACK - SURFACE/SUSPENSION

6 – MOUNTING (REQUIRED)



Ceiling surface mount bracket

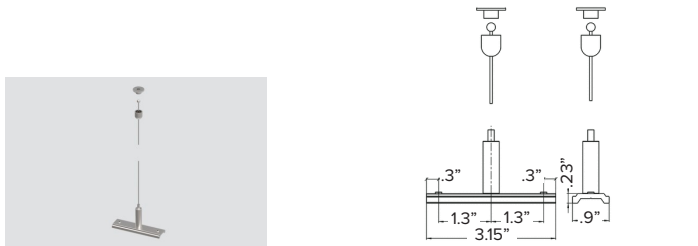
Finish White Black

Part No. **S-9500/115-W2** **S-9500/115-B**



Suspension kit. 16ft length cable. Recommended 2ea per 4ftL track, 3ea for 8ft track or 4ea per 16ft interconnected track in combination with 9500-KIT2-5.

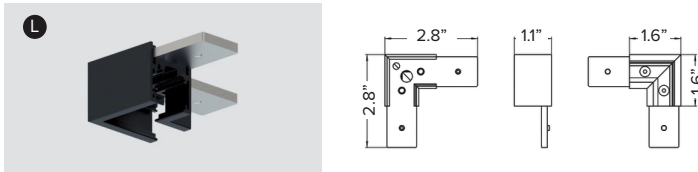
Part No. **9500-KIT1-5**



Suspension kit for interconnecting tracks. 16ft length cable provided. To be used combination with 9500-KIT1-5 on the non interconnected lengths.

Part No. **9500-KIT2-5**

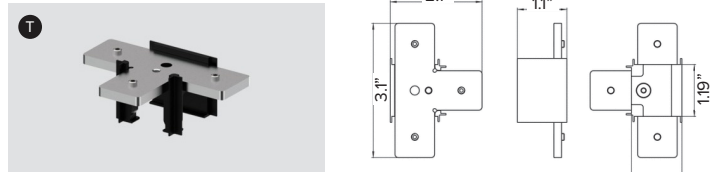
7 – MECHANICAL JOINT CONNECTOR (OPTIONAL)



Mechanical L-connection joint with steel bracket.

Finish White Black

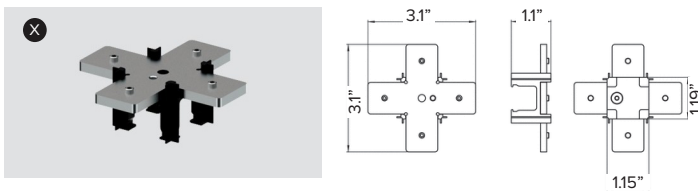
Part No. **S-9511/W2-ST6** **S-9511/B-ST6**



Mechanical T-connection joint with steel bracket.

Finish White Black

Part No. **S-9513/W2-P-ST6** **S-9513/B-P-ST6**



Mechanical X-connection joint with steel bracket.

Finish White Black

Part No. **S-9517/W2-P-ST6** **S-9517/B-P-ST6**

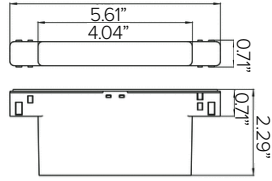


Linear joint connector. Required for use in interconnected lengths track lengths.

Part No. **S-9500/323-LA**

FORTYEIGHT MULTISYSTEM EVO TRACK - SURFACE/SUSPENSION

8 – INTERFACE (OPTIONAL)



Wireless bluetooth interface. Generates a local bus per run for individual fixture control for up to 96W max or 64 fixtures. Can control fixtures in indoor applications via [Casambi wireless bluetooth protocol](#). **Only to be used with Dali/Wireless Bluetooth Casambi version of FORTYEIGHT fixture range.**

Finish White Black

Part No. **APP1-M-C0-9519/W-E** **APP1-M-C0-9519/B-E**

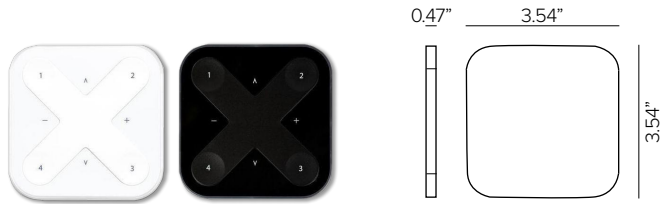
9 - POWER SUPPLY (REQUIRED)

ENCLOSURE								
Part No.	Wattage	Control	Dim Range	Rating	In / Out Voltage	Certification	Dimensions (Enclosure)	Description
DELV30148DJBX	30W	0-10V	1%	IP66	120-277V / 48V	UL CLASS 2	12.1" X 2.36" X 1.4"	MAGNITUDE SOLIDRIVE ELECTRONIC DRIVER WITH BUILT-IN JUNCTION BOX.
DELV60148DJBX	60W	0-10V	1%	IP66	120-277V / 48V	UL CLASS 2	12.1" X 2.36" X 1.4"	MAGNITUDE SOLIDRIVE ELECTRONIC DRIVER WITH BUILT-IN JUNCTION BOX.
DELV96148DJBX	96W	0-10V	1%	IP66	120-277V / 48V	UL CLASS 2	12.1" X 2.36" X 1.4"	MAGNITUDE SOLIDRIVE ELECTRONIC DRIVER WITH BUILT-IN JUNCTION BOX.
PS052	40W	VIA DALI / WIRELESS CASAMBI INTERFACE	0%	NEMA3R	120-277V / 48V	UL CLASS 2	6.3" x 10.79" x 2.17"	MEAN WELL HLG ELECTRONIC DRIVER COMPATIBLE WITH FORTYEIGHT DALI / WIRELESS BLUETOOTH CONTROL CASAMBI INTERFACE.
PS051	60W	VIA DALI / WIRELESS CASAMBI INTERFACE	0%	NEMA3R	120-277V / 48V	UL CLASS 2	6.3" x 10.79" x 2.17"	MEAN WELL HLG ELECTRONIC DRIVER COMPATIBLE WITH FORTYEIGHT DALI / WIRELESS BLUETOOTH CONTROL CASAMBI INTERFACE.
PS050	96W	VIA DALI / WIRELESS CASAMBI INTERFACE	0%	NEMA3R	120-277V / 48V	UL CLASS 2	6.3" x 10.79" x 2.17"	MEAN WELL HLG ELECTRONIC DRIVER COMPATIBLE WITH FORTYEIGHT DALI / WIRELESS BLUETOOTH CONTROL CASAMBI INTERFACE.
STANDALONE								
Part No.	Wattage	Control	Dim Range	Rating	In / Out Voltage	Certification	Dimensions (Standalone)	Description
DELV30148D	30W	0-10V	1%	IP66	120-277V / 48V	UL CLASS 2	7.5" X 2.36" X 1.4"	MAGNITUDE SOLIDRIVE ELECTRONIC STANDALONE DRIVER. UL LISTED ENCLOSURE PROVIDED BY OTHERS.
DELV60148D	60W	0-10V	1%	IP66	120-277V / 48V	UL CLASS 2	7.5" X 2.36" X 1.4"	MAGNITUDE SOLIDRIVE ELECTRONIC STANDALONE DRIVER. UL LISTED ENCLOSURE PROVIDED BY OTHERS.
DELV96148D	96W	0-10V	1%	IP66	120-277V / 48V	UL CLASS 2	7.5" X 2.36" X 1.4"	MAGNITUDE SOLIDRIVE ELECTRONIC STANDALONE DRIVER. UL LISTED ENCLOSURE PROVIDED BY OTHERS.

FORTYEIGHT MULTISYSTEM EVO TRACK - SURFACE/SUSPENSION

10 - CONTROLLER (OPTIONAL)

COMPATIBLE WITH WIRELESS BLUE TOOTH CASAMBI VERSION ONLY FOR INDIVIDUAL FIXTURE CONTROL.



Casambi Xpress remote controller, indoor mounted only. Four programmable presets. CR2430 battery (Included). **For DALI / Wireless Bluetooth Casambi control only. Each controller can program up to 4ea APP1-M-C0-9519 interfaces.**

Finish White Black

Part No. **SWITCH26** **SWITCH25**