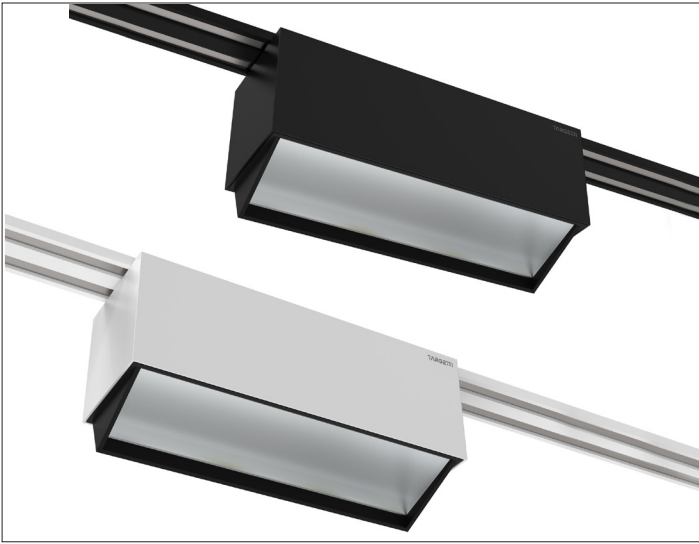
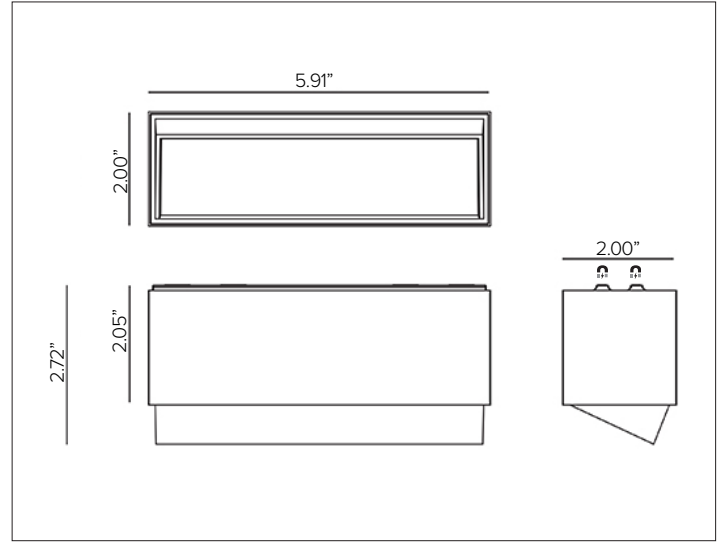


OZ 48V LARGE WALL WASHER

Magnet Mounted Modular Light System



OZ 48V LARGE WALL WASHER. Top to bottom, shown in shown in Deep Black and Plaster White finishes.



CONCEPT

Professional magnet mounted low voltage modular light system allowing for maximum application flexibility.

MECHANICAL CHARACTERISTICS

Dimensions	2"W X 2"H Nominal
Materials	Painted die-cast aluminum body.
Finish	<input type="radio"/> Plaster White <input checked="" type="radio"/> Deep Black
Power Connection	Magnetized electrical non-polarized coupling system.
Mounting	Simple magnetized coupling system that mounts directly to OZ 48V TRACK. Provides an easy installation for fixture field mounting and reconfigurations. This modular system meets seismic requirements; no extra security is required.
Weight	0.53lbs
Protection	IP20

CERTIFICATIONS

cULus Class 2 Location Listed.
 Tested in accordance with LM-79-08.
 Compliant with California energy regulations.
 RoHS3 EU 215/863

WARRANTY

5 year limited warranty.

ELECTRICAL CHARACTERISTICS

Power Supply	Remote power supply options available.
Wattage	21W
Voltage	48V
Control	0-10V dimmable through remote power / digital dimming interface for group fixture control <u>OR</u> wireless bluetooth control through Casambi app interface for individual fixture and/or optical DBS beam control. Refer to Targetti LMS (Light Management System) for detailed information.

SOURCE

High efficiency LED emitter.

TM30	CCT (Nominal)	CRI	Rf	Rg	SDCM
	2700K	90	92	99	2
	3000K	90	92	101	2
	3500K	90	91	100	2
	4000K	90	90	98	2

OPTIC

A high reflectance anodized aluminum reflector with holographic diffuser filter and black polycarbonate frame.



WW
37° X 80°

Delivered Lumens	2700K 2069Lm 3000K 2154Lm 3500K 2183Lm 4000K 2187Lm
Efficacy	104Lm/W max. Refer to photometric graphs for specific values.
Lifetime	L80/B10 >100,000hrs at max TA +25°C
Photobiological Classification	Low risk photobiological safety RG1

OZ 48V LARGE WALL WASHER

SPECIFICATION INFORMATION



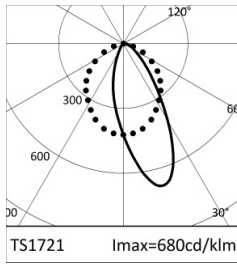
Ex: OZLWWDPWL130

1 - PRODUCT CODE	2 - TYPE	3 - CONTROL	4 - FINISH	5 - WATTAGE	6 - KELVIN
OZ — OZ 48V	LWW — Large Wall Washer	D — 0-10V Digital Dim C — Casambi Wireless Bluetooth	PW — Plaster White DB — Deep Black RAL — Custom RAL	L1 — 21W	27 — 2700K 30 — 3000K 35 — 3500K 40 — 4000K

7 - RAIL & DRIVER	8 - PROFILE
<p>REQUIRED</p> <p>See OZ 48V 0-10V DIGITAL DIM TRACK spec sheet for specification information.</p> <p>See OZ 48V WIRELESS TRACK spec sheet for specification information.</p>	<p>OPTIONAL</p> <p>See OZ 48V PROFILE spec sheets for specification information. SURFACE/ SUSPENSION or RECESSED.</p>

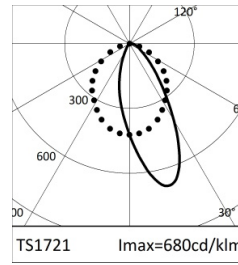
OZ 48V LARGE WALL WASHER

PHOTOMETRY



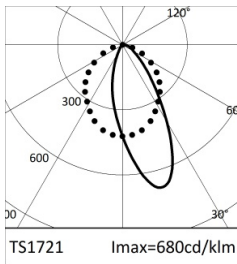
2700K		H(m)	D1(m)	D2(m)	Emax(lx)		
Ra90			37°	80°			
Fixture Power	21W	1	0.72	1.76	1715		
Source Flux	2775lm	2	1.44	3.51	429		
Fixture Flux	2069lm	3	2.16	5.27	191		
Efficacy	98lm/W	4	2.88	7.03	107		
TS1721	I _{max} =680cd/klm	I _{max}	1887cd	5	3.60	8.79	69

Maximum UGR = 33.9 (based on actual lumens)



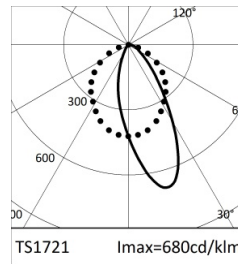
3000K		H(m)	D1(m)	D2(m)	Emax(lx)		
Ra90			37°	80°			
Fixture Power	21W	1	0.72	1.76	1786		
Source Flux	2889lm	2	1.44	3.51	446		
Fixture Flux	2154lm	3	2.16	5.27	198		
Efficacy	102lm/W	4	2.88	7.03	112		
TS1721	I _{max} =680cd/klm	I _{max}	1965cd	5	3.60	8.79	71

Maximum UGR = 34.1 (based on actual lumens)



3500K		H(m)	D1(m)	D2(m)	Emax(lx)		
Ra90			37°	80°			
Fixture Power	21W	1	0.72	1.76	1810		
Source Flux	2928lm	2	1.44	3.51	453		
Fixture Flux	2183lm	3	2.16	5.27	201		
Efficacy	103lm/W	4	2.88	7.03	113		
TS1721	I _{max} =680cd/klm	I _{max}	1991cd	5	3.60	8.79	72

Maximum UGR = 34.1 (based on actual lumens)



4000K		H(m)	D1(m)	D2(m)	Emax(lx)		
Ra90			37°	80°			
Fixture Power	21W	1	0.72	1.76	1814		
Source Flux	2934lm	2	1.44	3.51	453		
Fixture Flux	2187lm	3	2.16	5.27	202		
Efficacy	104lm/W	4	2.88	7.03	113		
TS1721	I _{max} =680cd/klm	I _{max}	1996cd	5	3.60	8.79	73

Maximum UGR = 34.1 (based on actual lumens)

OZ 48V LARGE WALL WASHER

CONTROL SYSTEM

Controlling light has never been easier. Targetti [LMS \(Light Management System\)](#) with Control by Casambi was created to make it possible to control light via Bluetooth Low Energy without the use of any special cables, ensuring system operational readiness. This wireless technology is compatible with all modern smart devices: smartphones, tablets and even smartwatches. Targetti fixtures are equipped with a special interface that allows them to communicate with each other to create a remotely controllable "smart" network.

The advantages are boundless. The possibility for users to interact with lighting – varying intensity, tone and shape in complete freedom and autonomy according to their needs. The design approach known as Human Centric Lighting that places people at the center of lighting projects.

Flexible and easy to use, suitable for managing all types of simple to more complex systems, LMS is a future-oriented system that can be constantly updated because it can be used with a simple application that can be downloaded onto a mobile device to manage the entire system in wireless mode.

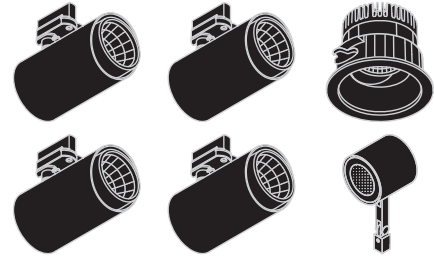
INSTALLATION SEQUENCE

1

Choose Targetti fixtures by opting for the Targetti Casambi Ready package or Casambi accessory components



Single



Groups

2

Download the Casambi iOS or Android App depending on the device used

Unit control

3

Launch the App: the fixtures in operation will be detected automatically

4

Create one or two networks depending on the characteristics of the environment

5

Create groups of devices as needed

6

Program scenes and/or sequences.

7

Set the level of network sharing

