

# BILLET

WALLGRAZER / WALLWASHER

**bold**  
lighting



The Billet family of products allows you to achieve uniformity throughout indoor and outdoor spaces while maintaining the same optical performance, light consistency, and overall aesthetics.

The Billet Wallwasher / Wallgrazer deliver unmatched vertical illumination with virtually zero glare. Like all Bold products, the Billet confidently delivers a flawless light distribution and a beautifully finished product.

## CONSTRUCTION

**Product Type :** Linear  
**Body Material :** Extruded Aluminum  
**Body Finish :** Black / Grey / White  
 Custom RAL  
**IP Rating :** IP67 Inground  
 IP66 Ceiling Recessed  
**IK Rating :** IK10

## LIGHT SOURCE

**Direct Light Source :** Mid-power LEDs  
**Luminous Output :** from 650lm/ft. to 2480lm/ft. (Delivered)  
**Light Source CCT :** 2700K / 3000K  
 3500K / 4000K / Tunable White  
 (2700K-5000K) / Dim-to-Warm  
 (3000K-1800K) / RGBW  
**Color Rendering Index :** Ra80 / Ra90

## INSTALLATION

**Environment :** Wet Location  
**Mounting :** Inground / Ceiling Recessed  
 (Trim & Trimless) / Wall Recessed  
 (Trim & Trimless) / Surface Mounted  
 Wall Mounted / Pendant

## ELECTRICAL

**Input Voltage :** 120V / UNV 120-277V -  
 50Hz/60Hz  
**Load :** 4W/ft. to 22W/ft.  
**Output Type :** Constant Current  
**Driver Type :** Integral  
**Dimming :** 0-10V / DALI / ELV / DMX / Lutron  
 Hi-Lume

## OPTICS

**Optical Distribution :** Wallgraze (15°)  
 Wallwash (25°)  
**Glare Control :** UGR<19

Code example: **BOW** - P12W - L1B - W - G827 - 0

Series	Mounting	Nominal Length		
<b>BOW</b>	<b>R</b> Recessed with Trim	<b>12</b>	12"	
	<b>T</b> Recessed Trimless	<b>18</b>	18"	
	<b>S</b> Surface Mounted	<b>24</b>	24"	
	<b>P</b> Pendant	<b>30</b>	30"	
	<b>I</b> Inground	<b>36</b>	36"	
	<b>W</b> Wall Mounted		<b>42</b>	42"
			<b>48</b>	48"
			<b>54</b>	54"
			<b>60</b>	60"
			<b>XX</b>	Custom in
		<b>LX</b>	Elbow	

For exact lengths refer to dimensions table.

Body Finish	Output <sup>1</sup>	Voltage	Dimming	Baffles	Beam Angle	CRI	Color Temp	Emergency
<b>W</b> White	<b>L</b> 650lm/ft (4W)	<b>1</b> 120V	<b>A</b> No Dimming	<b>W</b> Flat White	<b>G</b> 15° - Grazer <b>W</b> 25° - Washer	<b>8</b> +80 <b>9</b> +90	<b>27</b> 2700K	<b>0</b> no <b>9</b> 90 mins
<b>B</b> Black	<b>M</b> 1070lm/ft (9W)		<b>U</b> <sup>2</sup> Universal 120V to 277V	<b>B</b> 0-10V to 1%			<b>B</b> Flat Black	
<b>G</b> Grey	<b>H</b> 1700lm/ft (15W)	<b>C</b> 0-10V to Fade-off		<b>N</b> Black Nickel	<b>35</b> 3500K			
<b>X</b> Custom RAL	<b>V</b> 2480lm/ft (22W)	<b>D</b> DALI to 1%	<b>E</b> ELV Dimming	<b>C</b> Specular Chrome	<b>40</b> 4000K			
		<b>E</b> ELV Dimming	<b>F</b> DMX	<b>G</b> Bright Gold	<b>WD</b> <sup>4</sup> 3000K- 1800K			
		<b>F</b> DMX	<b>G</b> <sup>3</sup> LUTRON	<b>E</b> Diffuse Gold	<b>TW</b> <sup>5</sup> 2700K - 5000K			
		<b>G</b> <sup>3</sup> LUTRON		<b>X</b> Custom	<b>CC</b> RGBW			

### Notes:

- <sup>1</sup> Denotes output at 3000K, unless otherwise noted.
- <sup>2</sup> Not applicable for ELV dimming.
- <sup>3</sup> Hi-Lume 1% EcoSystem Soft-on, Fade-to-Black dimming.
- <sup>4</sup> Denotes output specific to Dim-to-Warm at 3000K.
- <sup>5</sup> Denotes output specific to Tunable White at full on.

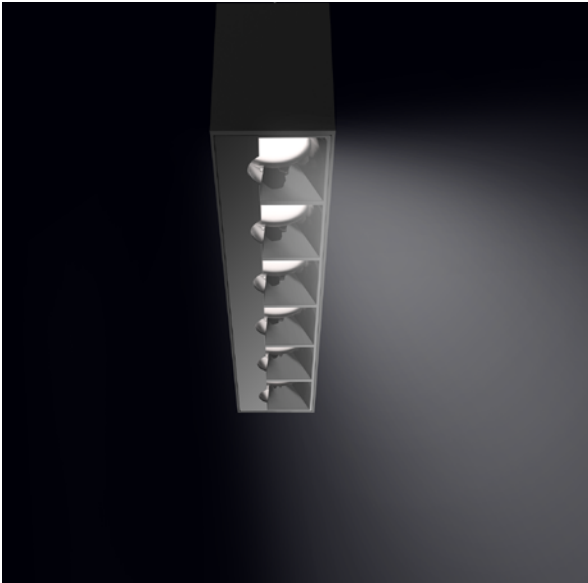
Consult factory for lead-times.  
 Consult factory for systems using multiple optics and mounting configurations.



**Bold Lighting**  
 4710 Ecton Dr. Unit F & G, Marietta, GA 30066, USA  
 info@boldlighting.us www.boldlighting.us  
 t: +1-678-903-4061

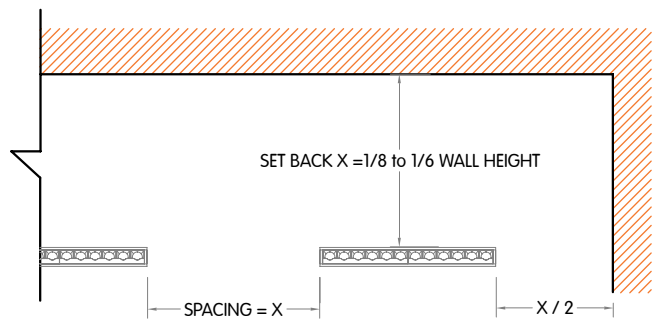
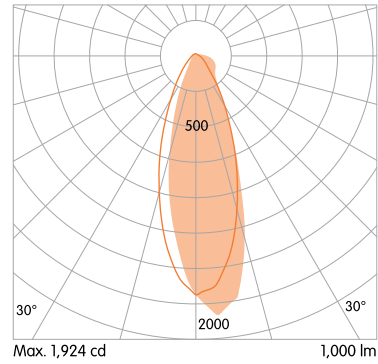
# OPTICAL FLEXIBILITY

## BAFFLED WALLWASHER

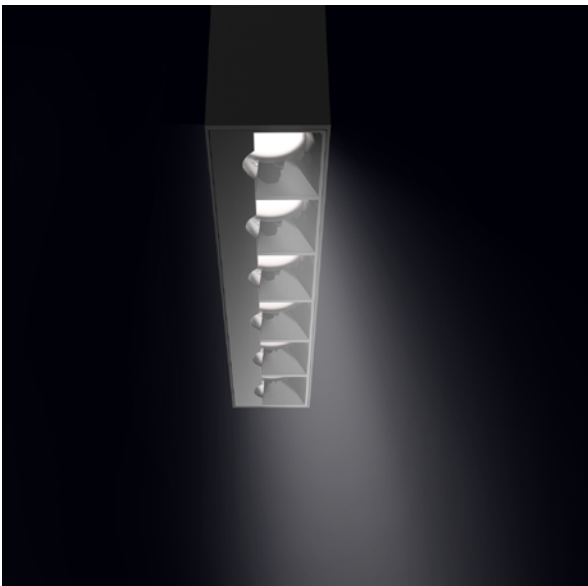


Billet wallwash provides even illumination of vertical surfaces with a flexible setback of 1/8 to 1/6 of the wall height. This optic is ideal for washing large areas where exceptional uniformity is required.

Wallwasher

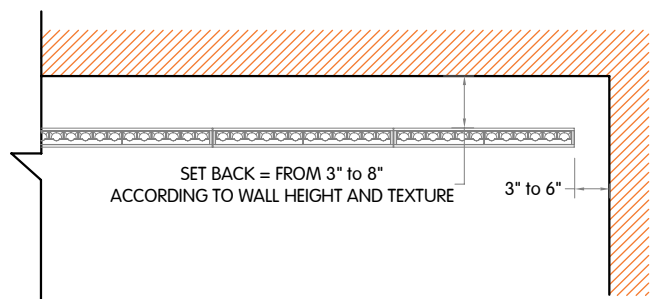
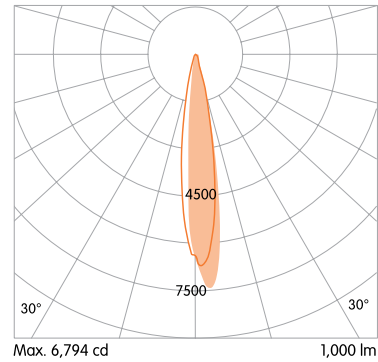


## BAFFLED WALLGRAZER



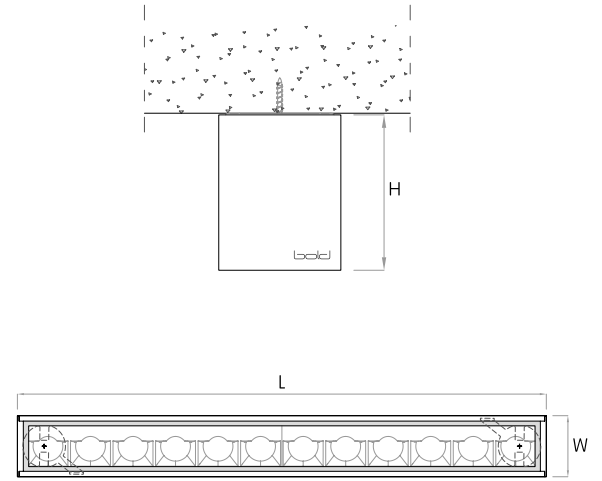
Billet wallgrazer delivers maximum performance for emphasizing textured and rough vertical surfaces. The standard output illuminates walls up to 14'-0" with outstanding transversal and longitudinal glare control.

15° Wallgrazer



# MOUNTING FLEXIBILITY

## SURFACE MOUNTED



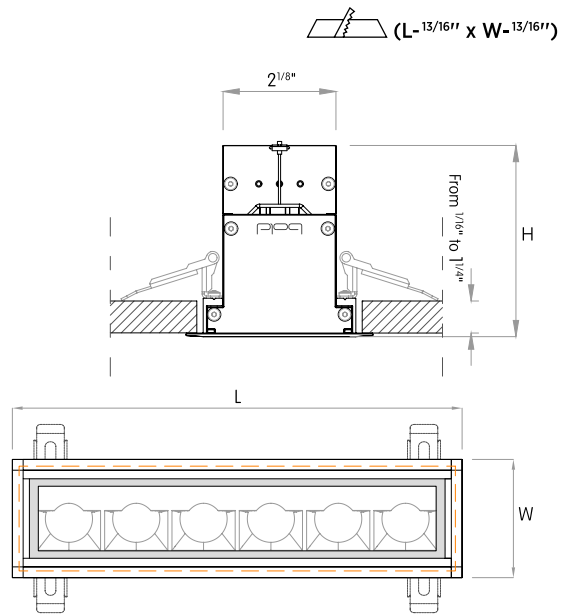
Actual

L= 24<sup>1</sup>/<sub>2</sub>" | 36<sup>5</sup>/<sub>16</sub>" | 48<sup>1</sup>/<sub>8</sub>" | 59<sup>5</sup>/<sub>16</sub>" | Continuous runs

W= 2<sup>13</sup>/<sub>16</sub>"

H= 3<sup>9</sup>/<sub>16</sub>"

## RECESSED WITH TRIM



Actual

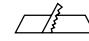
L= 13<sup>3</sup>/<sub>16</sub>" | 25" | 36<sup>13</sup>/<sub>16</sub>" | 48<sup>5</sup>/<sub>8</sub>" | 60<sup>7</sup>/<sub>16</sub>" | Continuous runs

W= 3<sup>7</sup>/<sub>16</sub>"

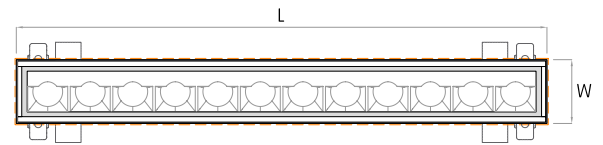
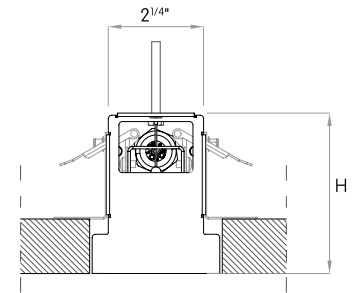
H= 3<sup>9</sup>/<sub>16</sub>"



# MOUNTING FLEXIBILITY

 ( $L+1/16'' \times W+1/16''$ )

## RECESSED TRIMLESS



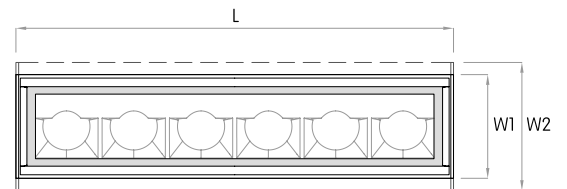
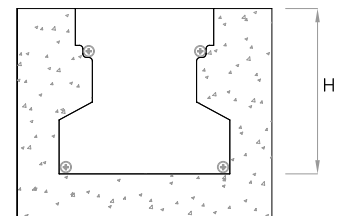
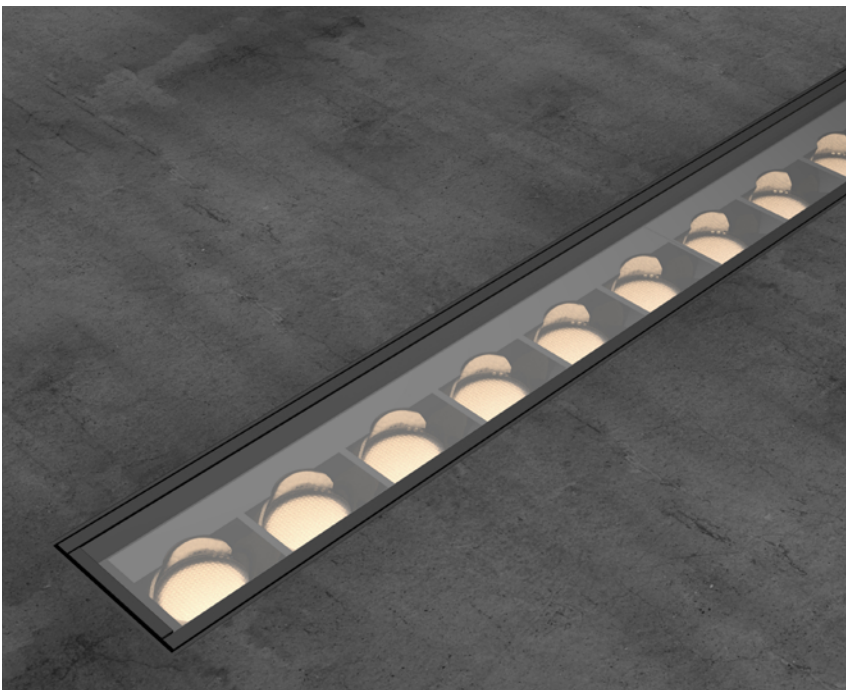
Actual

L= 24<sup>5/8</sup>" | 36<sup>3/8</sup>" | 48<sup>1/4</sup>" | 60" | Continuous runs

W= 2<sup>15/16</sup>"

H= 3<sup>1/16</sup>"

## INGROUND



Actual

L= 12<sup>13/16</sup>" | 24<sup>5/8</sup>" | 36<sup>7/16</sup>" | 48<sup>1/4</sup>" | 60" | Continuous runs

W1= 3" | W2= 3<sup>3/4</sup>"

H= 3<sup>5/8</sup>"

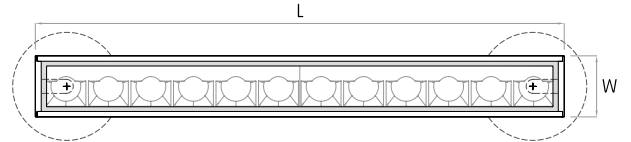
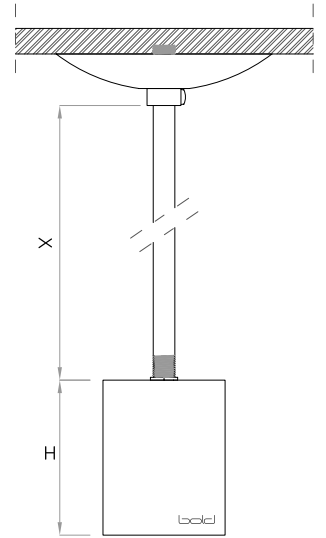


# MOUNTING FLEXIBILITY

## PENDANT



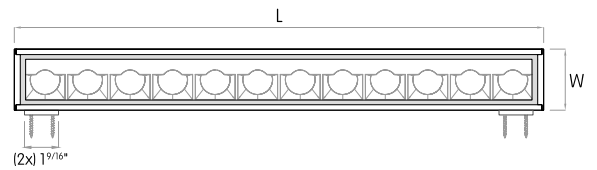
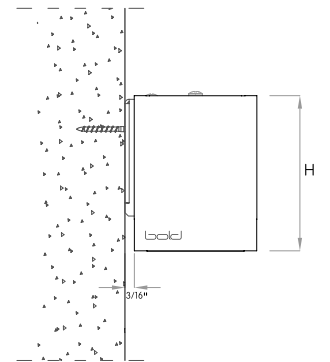
Actual  
 L= 24<sup>1</sup>/<sub>2</sub>" | 36<sup>5</sup>/<sub>16</sub>"  
 | 48<sup>1</sup>/<sub>8</sub>" | 59<sup>15</sup>/<sub>16</sub>" |  
 Continuous runs  
 W= 2<sup>13</sup>/<sub>16</sub>"  
 H= 3<sup>9</sup>/<sub>16</sub>"  
 X= 59"



## WALL MOUNTED



Actual  
 L= 24<sup>1</sup>/<sub>2</sub>" | 36<sup>5</sup>/<sub>16</sub>" | 48<sup>1</sup>/<sub>8</sub>" | 59<sup>15</sup>/<sub>16</sub>" | Continuous runs  
 W= 2<sup>13</sup>/<sub>16</sub>"  
 H= 3<sup>9</sup>/<sub>16</sub>"



## DELIVERED LUMEN OUTPUT

Output		Watts			CRI +80			CRI +90						
<b>STATIC-WHITE</b>					<b>2700K</b>	<b>3000K</b>	<b>4000K</b>			<b>2700K</b>	<b>3000K</b>	<b>4000K</b>		
<b>L</b>	4W				620lm	650lm	680lm			520lm	540lm	570lm		
<b>M</b>	9W				1010lm	1070lm	1110lm			850lm	880lm	930lm		
<b>H</b>	15W				1600lm	1700lm	1760lm			1350lm	1400lm	1480lm		
<b>V</b>	22W				2380lm	2480lm	2610lm			1970lm	2040lm	2150lm		
<b>DIM-TO-WARM 3000K-1800K</b>										<b>3000K</b>				
<b>L</b>	9W									930lm				
<b>V</b>	18W									1700lm				
<b>TUNABLE WHITE 2700K-5000K</b>					<b>2700K</b>			<b>5000K</b>			<b>2700K</b>			<b>5000K</b>
<b>L</b>	12W				1140lm			1220lm			970lm			1030lm
<b>V</b>	22W				1600lm			1710lm			1350lm			1450lm
<b>RGBW</b>										<b>R</b>	<b>G</b>	<b>B</b>	<b>W</b>	
<b>TOTAL</b>	47.5W									(9W) 220lm	(13.5W) 660lm	(13W) 210lm	(12W) 590lm	

## DIMENSIONS TABLE

		12"		24"		36"		48"		60"					
		Height		Width		Actual Length		Actual Length		Actual Length					
		mm	inch	mm	inch	mm	inch	mm	inch	mm	inch				
<b>Surface Mounted</b>		91	3 9/16	72	2 13/16			623	24 1/2	923	36 5/16	1223	48 1/8	1523	59 15/16
<b>Recessed with Trim</b>		91	3 9/16	88	3 7/16	335	13 3/16	635	25	935	36 13/16	1235	48 5/8	1535	60 7/16
<b>Recessed Trimless</b>		93	3 11/16	75	2 15/16			625	24 5/8	925	36 3/8	1225	48 1/4	1525	60
<b>Pendant</b>		91	3 9/16	72	2 13/16			623	24 1/2	923	36 5/16	1223	48 1/8	1523	59 15/16
<b>Inground (with housing)</b>		92	3 5/8	95	3 3/4	325	12 13/16	625	24 5/8	925	36 7/16	1225	48 1/4	1525	60
<b>Wall Mounted</b>		91	3 9/16	72	2 13/16			623	24 1/2	923	36 5/16	1223	48 1/8	1523	59 15/16

