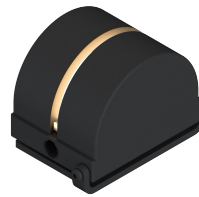


L159

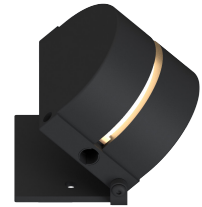
EXTERIOR | INTERIOR

Window Sill

- Wet, Damp, and Dry location



Shown with **no tilt angle**



Shown with **45° tilt**

Ordering Information

Clear Form

Date : _____

Quantity : _____

Project : _____

Note : _____

Type : _____

Specifications

Luminaire | Example Code: L159-4-W30H-E-BA

Product	Version	CCT & CRI ¹	Beam Angle	Trim Finish
L159	4		E	BA
	4 4W	W27H 2700K 90+ W30H 3000K 90+ WD warm dimming (1800K-3000K, 95+ CRI)	E elliptical 5°+175°	BA black anodized

System Components (Ordered Separately)

Remote Driver : _____

* Consult MP Lighting Website or Factory.

Important Notes

Specification

1. Refer to pg.2 - for Light Quality & Colour Consistency details. Consult factory for RGB White option.

Warranty Notes & Disclaimer

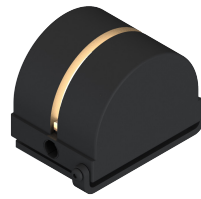
Malfunction and damage to product due to incompatible dimming system or misuse will not be covered under warranty. Consult MP Lighting for recommended drivers. If the fixture has an option to be installed with a dimming control system, consult a dimming system manufacturer with minimum load before installing. MP Lighting reserves the right, at its sole discretion, at any time and without notice, to make design changes to any of our products. Consult MP Lighting website for most updated documentation.

L159

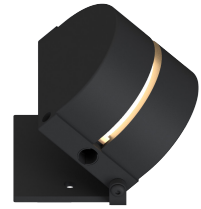
EXTERIOR | INTERIOR

Window Sill

- Wet, Damp, and Dry location



Shown with no tilt angle



Shown with 45° tilt

Performance

Wattage	Forward Current	Power Consumption Budget per fixture (including driver)	LED output (Source)	Fixture Output (Delivered)
4W	350mA	4.5W	440 lm	47-55.4 lm

Application

Environment	Wet, Damp, Dry Location approved. IP 66.
Mounting	Designed to be installed on the bottom or side of the window, fastened by two screws. Included 3' (914mm) wire lead.

Electrical

Power Supplies	Remote LED drivers (120-277V AC input, constant current output): Fixtures to be wired in series.
Control	<p>On/off control</p> <p>Dimming: ELV or 0-10V dimming with appropriate drivers</p> <p>Other options (consult factory): TRIAC/MLV, DMX, DALI, Casambi, Power over Ethernet</p>

Luminaire Construction

LED Light Source	<p>W27H = CCT: 2700K, CRI (Ra): 90+, Colour Consistency: 2SDCM</p> <p>W30H = CCT: 3000K, CRI (Ra): 90+, Colour Consistency: 2SDCM</p>
Weight	N/A
Material	Fixture: solid anodized aluminum
Supplied with	Cable: 3' (914mm) factory-installed wire lead
Warranty & LED Life	5 years limited warranty Estimated useful life of LED is 50,000 hours.

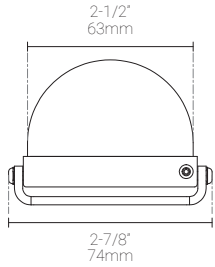
Ordered Separately

System Components	Power supplies: remote driver
-------------------	--------------------------------------

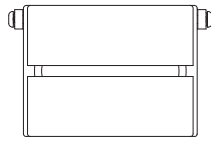
Mounting Options & Dimensions

Fixture Dimensions

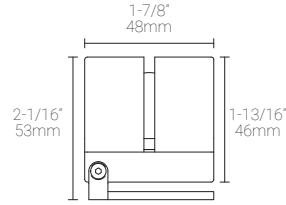
Fixture



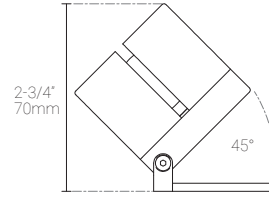
Top View



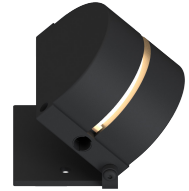
Side View



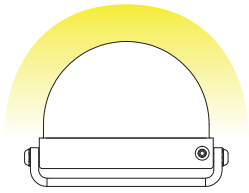
Side View 2



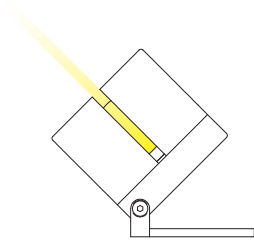
3D View



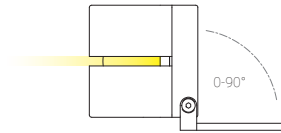
Beam 1



Beam 2

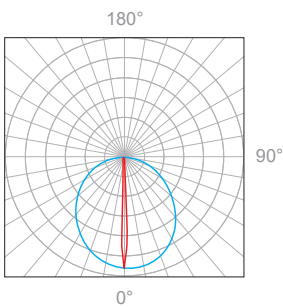


Beam 3



4W, 3000K, 90+ CRI

Polar Candela Distribution



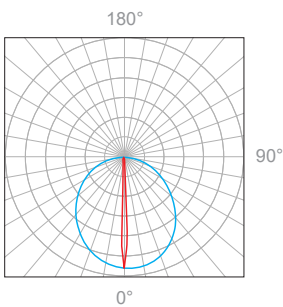
Illuminance at a Distance

Distance		Center Beam fc	Beam Width			
1.0ft	0.30m	139fc	4.3ft	1.31m	0.1ft	0.03m
2.0ft	0.61m	34.7fc	8.6ft	2.62m	0.1ft	0.03m
3.0ft	0.91m	15.4fc	12.8ft	3.90m	0.2ft	0.06m
4.0ft	1.22m	8.66fc	17.1ft	5.21m	0.3ft	0.09m
5.0ft	1.52m	5.55fc	21.4ft	6.52m	0.4ft	0.12m
10.0ft	3.05m	3.85fc	25.7ft	7.83m	0.4ft	0.12m

Delivered Lumen: 55.4 lm
 ■ Vertical Beam Spread: 109.9°
 ■ Horizontal Beam Spread: 2.7°

4W, 3000K, 90+ CRI | Warm Dim

Polar Candela Distribution



Illuminance at a Distance

Distance		Center Beam fc	Beam Width			
1.0ft	0.30m	257fc	2.6ft	0.79m	0.1ft	0.03m
2.0ft	0.61m	64.3fc	5.2ft	1.58m	0.1ft	0.03m
3.0ft	0.91m	28.6fc	7.8ft	2.37m	0.2ft	0.06m
4.0ft	1.22m	16.1fc	10.4ft	2.17m	0.2ft	0.06m
5.0ft	1.52m	10.3fc	13.0ft	3.96m	0.3ft	0.09m
10.0ft	3.05m	7.15fc	15.5ft	4.72m	0.4ft	0.12m

Delivered Lumen: 47 lm
 ■ Vertical Beam Spread: 104.7°
 ■ Horizontal Beam Spread: 3.5°