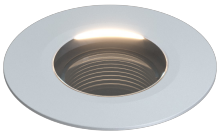


L312

EXTERIOR | INTERIOR

In-grade | For ground, ceilings, walls, and stairs

Wet, Damp, and Dry location



Ordering Information

Clear Form

Date :

Quantity :

Project :

Note :

Type :

Specifications

Luminaire | Example Code: L312-2-W30H-S-C-[]-0-MK3-P-S6

Product	Version	CCT & CRI ¹	Beam Angle	Lens	Accessories ³ (optional)	Mounting Kit ⁴ (optional)	Flange & Back Box ⁵	Trim Finish ⁷
L312								
	1 1W 2 2W	W22S 2200K 80+ W27H 2700K 90+ W30H 3000K 90+ W35H 3500K 90+ W41H 4100K 90+	SS super spot 7° S spot 12° N narrow flood 30°	C clear F frosted A anti-slip ²	LM louver, matte anodized LB louver, black anodized HM hex louver, matte anodized HB hex louver, black anodized AB angled louver, black anodized SB straight louver, black anodized QB square louver, black anodized RB ring louver, black anodized	MK1 vertical surface MK3 in-ground	Octagonal Aluminum Back Box with : P paving stone flange depth: 5-1/2" (138mm) Pipe *: PIPE 1-5/8" PVC pipe length: 11-13/16" (300mm) NB no back box or flange	Aluminum Finishes: MA matte clear anodized BA black anodized BZ bronze powder coated Stainless Steel Finishes: S6 stainless steel 316 BT0 black stainless steel Other Materials: ABR antique brass ABZ antique bronze PBR polished brass

System Components (Ordered Separately)

Remote Driver :

* Consult MP Lighting Website or Factory.

Important Notes

Specification

1. Refer to pg.02 - for Light quality and colour consistency details.

2. Anti-slip is only available with Clear lens. Refer to Appendix or MP Lighting website for images and details.

3. Louvers will be below the glass cover. Only available when there is no Internal Angle Bracket.

4. Mounting kit is ordered separately. Please consult factory.

5. For components included, refer to Luminaire Construction section. See pg.3 for back box and flange options.
6. Factory set length of 11-13/16" (300mm). Visit [PIPE-C](#) for details.

7. Different finish options are only applicable to trim ring and not for LED module housing. Refer to Appendix or MP Lighting website for complete look of luminaire with different trim finish options.

Warranty Notes & Disclaimer

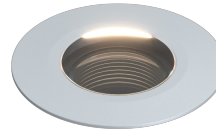
Malfunction and damage to product due to incompatible dimming system or misuse will not be covered under warranty. Consult MP Lighting for recommended drivers. If the fixture has an option to be installed with a dimming control system, consult a dimming system manufacturer with minimum load before installing. MP Lighting reserves the right, at its sole discretion, at any time and without notice, to make design changes to any of our products. Consult MP Lighting website for most updated documentation.

L312

EXTERIOR | INTERIOR

In-grade | For ground, ceilings, walls, and stairs

• Wet, Damp, and Dry location



Performance

Wattage	Forward Current	Power Consumption Budget per fixture (including driver)	LED output (Source)	Fixture Output (Delivered)
1W	350mA	1.3W	110 lm	36.2-52 lm
2W	700mA	2.6W	220 lm	69-71.5 lm

Application

Environment	Dry / Damp / Wet Location approved. IP 68.
Drive Over Rating	9,700 lbs (4,400 kg)
Mounting	<p>Recessed: Designed to be cast into earth, gravel, or concrete or inserted into paving stones or pavers. Included backbox, flange and level for direct burial or casting applications.</p> <p>MK1 mounting kit (optional): Recommended for easy installation on vertical surfaces (e.g. stair risers, walls), and downward-facing surfaces (e.g. ceilings, soffits). See "Mounting Options & Dimensions," or visit MK1</p> <p>MK3 mounting kit (optional): Recommended for thicker concrete slab and paving stone in-ground installation. Custom rectangular electrical box option is available for stair riser&wall installation. See "Mounting Options & Dimensions," or visit MK3</p>

Electrical

Power Supplies	Remote LED drivers (120-277V AC input, constant current output): Fixtures to be wired in series.
Control	<p>On/off control</p> <p>Dimming: ELV or 0-10V dimming with appropriate drivers</p> <p>Other options (consult factory): TRIAC/MLV, DMX, DALI, Casambi, Power over Ethernet</p>

Luminaire Construction

LED Light Source	<p>W22S = CCT: 2200K, CRI (Ra): 80+, Colour Consistency: 3SDCM</p> <p>W27H = CCT: 2700K, CRI (Ra): 90+, Colour Consistency: 2SDCM</p> <p>W30H = CCT: 3000K, CRI (Ra): 90+, Colour Consistency: 2SDCM</p> <p>W35H = CCT: 3500K, CRI (Ra): 90+, Colour Consistency: 2SDCM</p> <p>W41H = CCT: 4100K, CRI (Ra): 90+, Colour Consistency: 3SDCM</p>
Weight	N/A
Material	Fixture: machined marine-grade aluminum, machined brass or machined stainless steel (316) with tempered glass
Supplied with	<p>Standard installation housing: Comes with an octagonal back box, a flange, an integral leveling device, a plastic cap, gel filled wire nuts, and silicone grease.</p> <p>Cable: 6" (152mm) factory-installed wire lead</p>
Warranty & LED Life	<p>5 years limited warranty</p> <p>Estimated useful life of LED is 50,000 hours.</p>

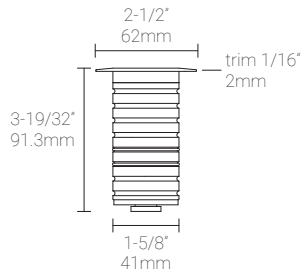
Ordered Separately

System Components	<p>Power supplies: remote driver</p> <p>Please consult factory or visit Recommended Drivers for available driver options.</p> <p>Mounting kits: MK1 or MK3 (custom length rebar in MK3 supplied by contractors)</p> <p>Custom back boxes: see Pg.3-5 Mounting Options & Dimensions.</p>
-------------------	--

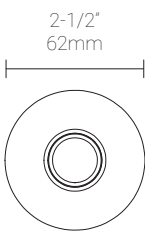
Mounting Options & Dimensions

LED Insert Dimensions

Fixture



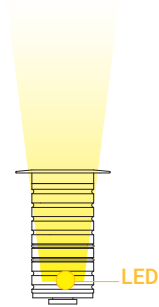
Top View



3D View

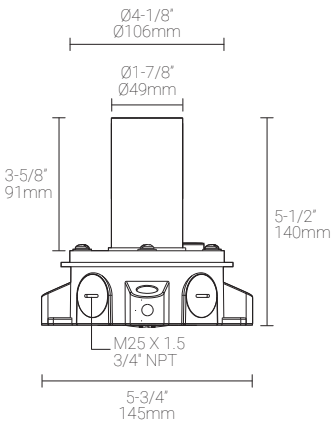


Beam

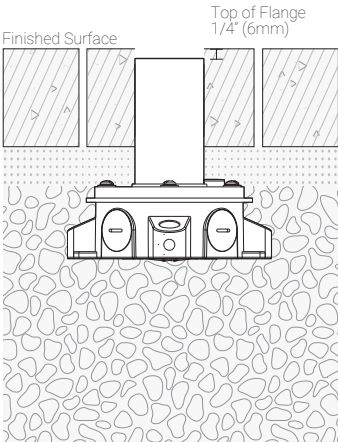


In-ground Installation (shown with MP Lighting Back Box | Order Code: **EBX-OCT1-CPMA**)

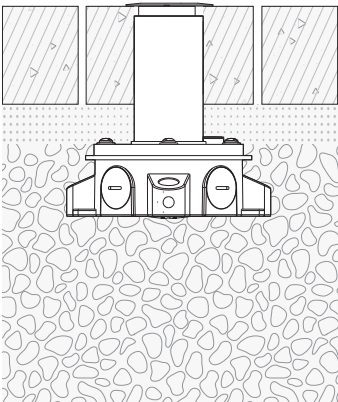
Box with Standard Flange



Box with Standard Flange:
During Concrete Installation



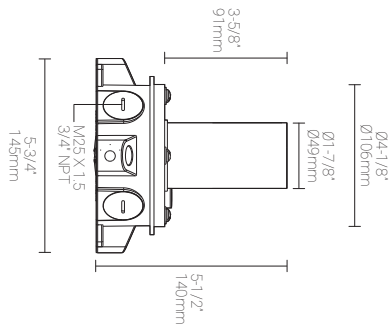
Box with Standard Flange:
Complete Concrete Installation



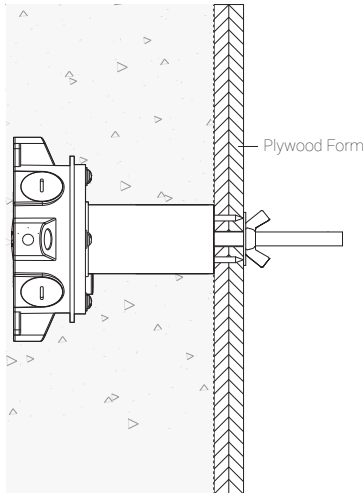
Mounting Kits

MK1(MK1-OCT1-C) : Ceiling, Wall, and Stair Riser Installation (shown with MP Lighting Back Box | Order Code: **EBX-OCT1-CPMA**)

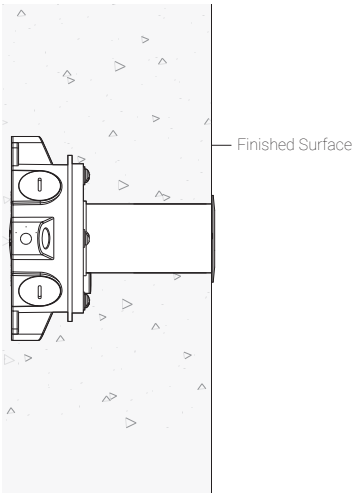
Box with Paving Stone Flange



Box with Paving Stone Flange & MK1:
During Installation



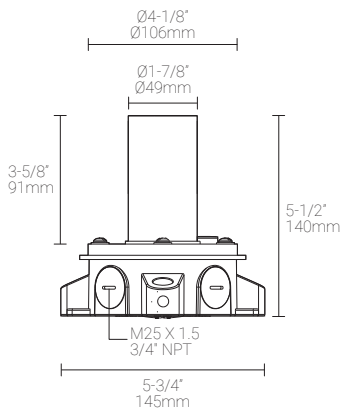
Box with Paving Stone Flange
Complete Installation



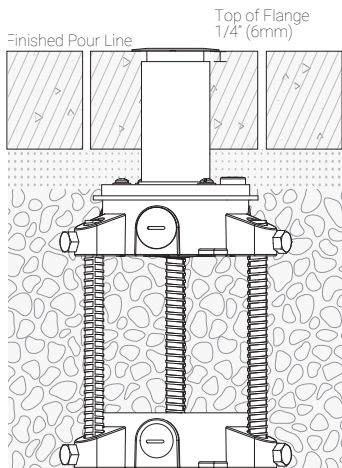
6" (152mm) threaded rod is supplied. Thread size: 3/8"-16

MK3: In-ground Installation | Shown with MP Lighting Back Box (Order Code: **EBX-OCT1-CPMA**)

Box with Paving Stone Flange



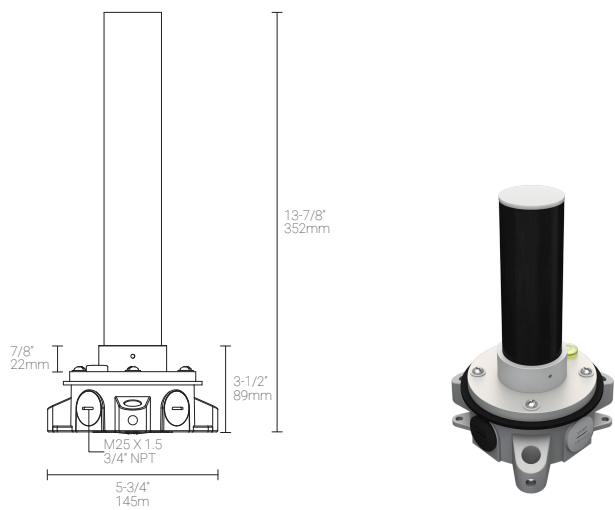
Box with Paving Stone Flange
& MK3: During Installation



6" (152mm) threaded rod is supplied. Thread size: 3/8"-16

EBX-OCT1-CPIPE

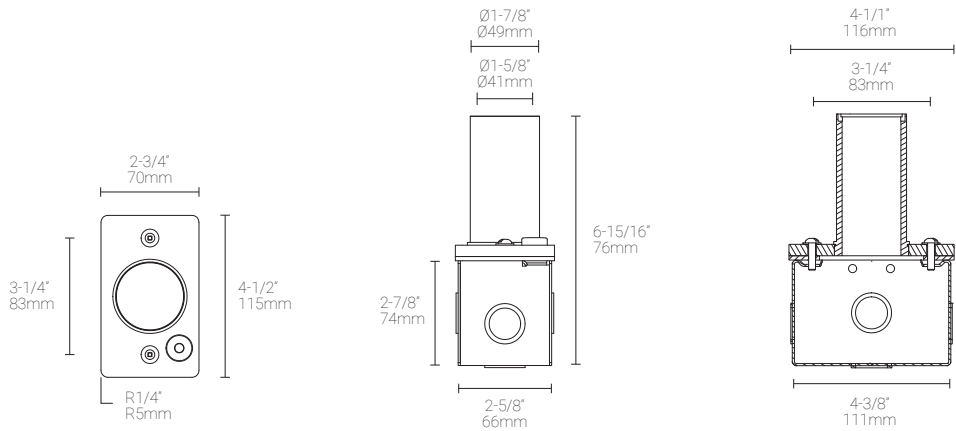
PIPE (PIPE-C) : In-ground/Landscape Installation | Shown with MP Lighting Back Box (Order Code: EBX-OCT1-CPIPE)



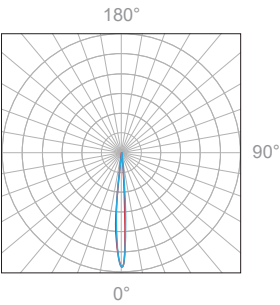
Rectangular Back Box for Wall Installation (shown with Standard Flange)

1. For wall Installation, custom rectangular electrical boxes are available as alternative options.

MP Lighting Single Gang Back Box | Order Code: EBX-SGB1-CPS6



Polar Candela Distribution



Beam Width: 6°

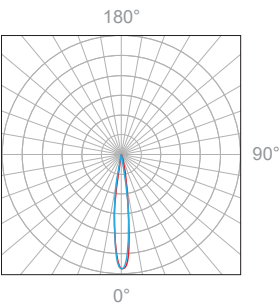


Illuminance at a Distance

Distance		Center Beam fc	Beam Width			
1.5ft	0.46m	86fc	0.3ft	0.09m	0.3ft	0.09m
3.0ft	0.91m	22fc	0.6ft	0.18m	0.6ft	0.18m
4.5ft	1.37m	10fc	1.0ft	0.30m	1.0ft	0.30m
6.0ft	1.83m	5fc	1.3ft	0.40m	1.3ft	0.40m
7.5ft	2.29m	3fc	1.6ft	0.49m	1.6ft	0.49m
9.0ft	2.74m	2.4fc	1.9ft	0.58m	1.9ft	0.58m

Delivered Lumen: 36.2lm
■ Vertical Beam Spread: 6.2°
■ Horizontal Beam Spread: 6.3°

Polar Candela Distribution



Beam Width: 12°

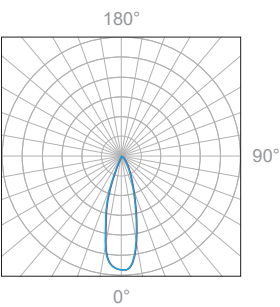


Illuminance at a Distance

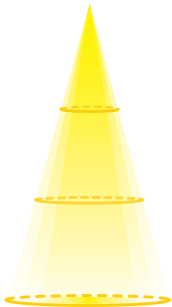
Distance		Center Beam fc	Beam Width			
1.5ft	0.46m	171fc	0.5ft	0.15m	0.5ft	0.15m
3.0ft	0.91m	48fc	1.0ft	0.30m	1.0ft	0.30m
4.5ft	1.37m	21fc	1.6ft	0.49m	1.6ft	0.49m
6.0ft	1.83m	9.8fc	2.1ft	0.64m	2.1ft	0.64m
7.5ft	2.29m	6.2fc	2.6ft	0.79m	2.6ft	0.79m
9.0ft	2.74m	4.4fc	3.1ft	0.95m	3.1ft	0.95m

Delivered Lumen: 43lm
■ Vertical Beam Spread: 14.0°
■ Horizontal Beam Spread: 14.3°

Polar Candela Distribution



Beam Width: 30°

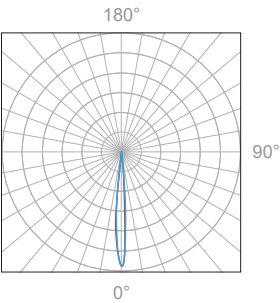


Illuminance at a Distance

Distance		Center Beam fc	Beam Width			
1.5ft	0.46m	133fc	0.8ft	0.24m	0.8ft	0.24m
3.0ft	0.91m	37fc	1.7ft	0.52m	1.6ft	0.49m
4.5ft	1.37m	16fc	2.5ft	0.76m	2.5ft	0.76m
6.0ft	1.83m	10fc	3.3ft	1.01m	3.3ft	1.01m
7.5ft	2.29m	6.9fc	4.2ft	1.28m	4.1ft	1.25m
9.0ft	2.74m	4.5fc	5.0ft	1.52m	4.9ft	1.52m

Delivered Lumen: 52lm
■ Vertical Beam Spread: 32.5°
■ Horizontal Beam Spread: 32.1°

Polar Candela Distribution



Beam Width: 6°

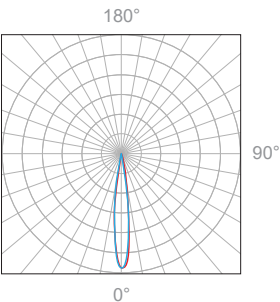


Illuminance at a Distance

Distance		Center Beam fc	Beam Width			
1.5ft	0.46m	170fc	0.3ft	0.09m	0.3ft	0.09m
3.0ft	0.91m	43fc	0.6ft	0.18m	0.6ft	0.18m
4.5ft	1.37m	19fc	1.0ft	0.30m	1.0ft	0.30m
6.0ft	1.83m	11fc	1.3ft	0.40m	1.3ft	0.40m
7.5ft	2.29m	6.8fc	1.6ft	0.49m	1.6ft	0.49m
9.0ft	2.74m	4.7fc	1.9ft	0.58m	1.9ft	0.58m

Delivered Lumen: 71.5lm
■ Vertical Beam Spread: 6.2°
■ Horizontal Beam Spread: 6.3°

Polar Candela Distribution



Beam Width: 12°

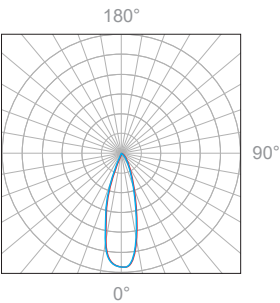


Illuminance at a Distance

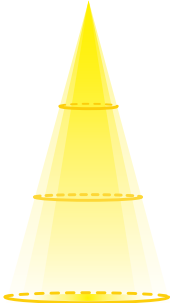
Distance		Center Beam fc	Beam Width			
1.5ft	0.46m	322fc	0.5ft	0.15m	0.5ft	0.15m
3.0ft	0.91m	89fc	1.0ft	0.30m	1.0ft	0.30m
4.5ft	1.37m	39fc	1.6ft	0.49m	1.6ft	0.49m
6.0ft	1.83m	22fc	2.1ft	0.64m	2.1ft	0.64m
7.5ft	2.29m	14fc	2.6ft	0.79m	2.6ft	0.79m
9.0ft	2.74m	9.6fc	3.1ft	0.95m	3.1ft	0.95m

Delivered Lumen: 69lm
■ Vertical Beam Spread: 19.2°
■ Horizontal Beam Spread: 19.2°

Polar Candela Distribution



Beam Width: 30°



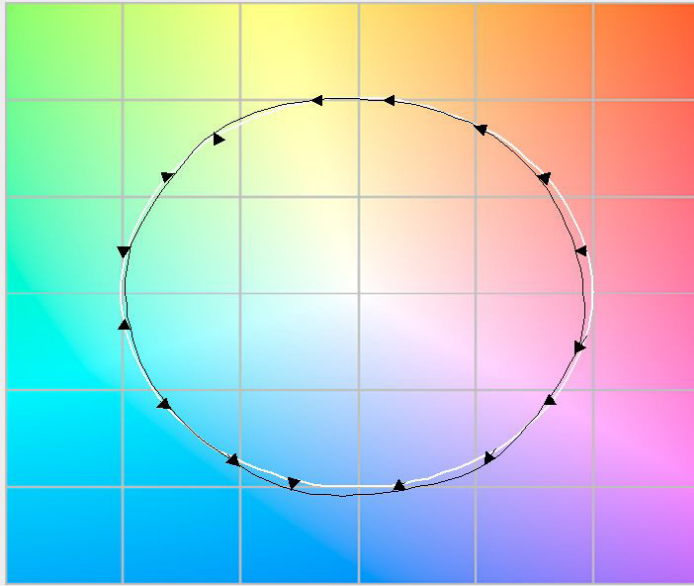
Illuminance at a Distance

Distance		Center Beam fc	Beam Width			
1.5ft	0.46m	253fc	0.8ft	0.24m	0.8ft	0.52m
3.0ft	0.91m	69fc	1.5ft	0.46m	1.5ft	0.46m
4.5ft	1.37m	31fc	2.3ft	0.70m	2.3ft	0.70m
6.0ft	1.83m	17fc	3.1ft	0.94m	3.0ft	0.91m
7.5ft	2.29m	11fc	3.8ft	1.16m	3.8ft	1.16m
9.0ft	2.74m	7.9fc	4.6ft	1.40m	10.4ft	1.40m

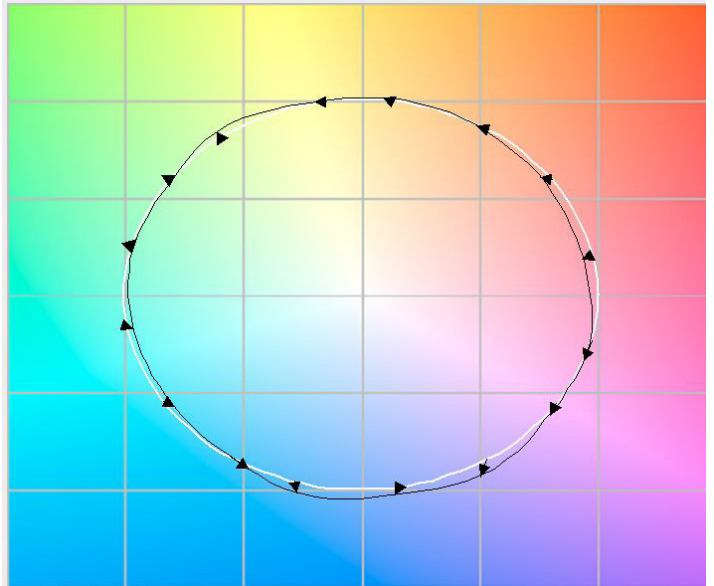
Delivered Lumen: 70lm
■ Vertical Beam Spread: 28.5°
■ Horizontal Beam Spread: 28.5°

TM30 Report

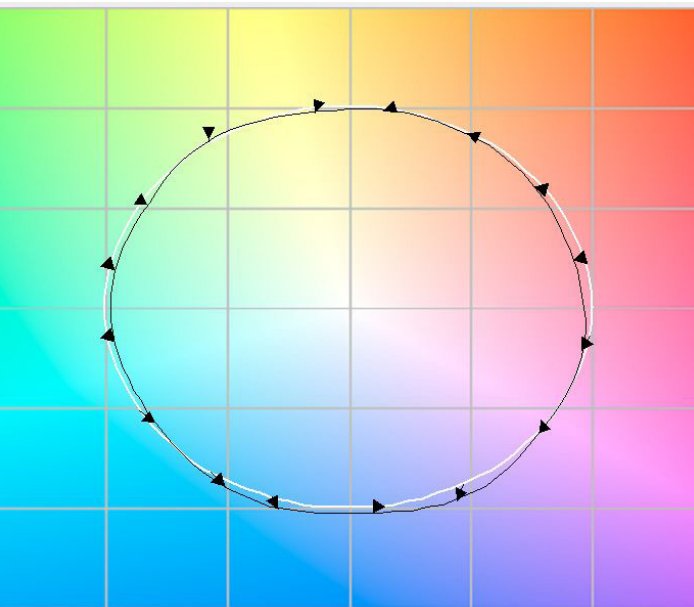
2700K, 90+CRI



3000K, 90+CRI



3500K, 90+CRI

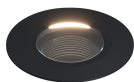


Appendix

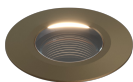
Aluminum Finishes



MA matte clear anodized with anti-slip lens

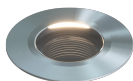


BA black anodized



BZ bronze powder coated

Stainless Steel Finishes

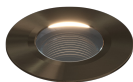


S6 stainless steel 316

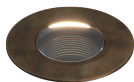


BT0 black stainless steel

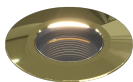
Other Materials



ABR antique brass



ABZ antique bronze



PBR polished brass

Accessories



LM louver, matte clear anodized



LB louver, black anodized



HM hex louver, matte clear anodized



HB hex louver, black anodized



AB angled louver, black anodized



SB straight louver, black anodized



QB square louver, black anodized



RB ring louver, black anodized

Lens Options



C clear lens



F frosted



A anti-slip