

L339

EXTERIOR | INTERIOR

In-grade | Indicator, marker light for decks and floors

- Wet, Damp, and Dry location



Ordering Information

[Clear Form](#)

Date :	<input type="text"/>	Quantity :	<input type="text"/>
Project :	<input type="text"/>	Note :	<input type="text"/>
Type :	<input type="text"/>		<input type="text"/>

Specifications

Luminaire | Example Code: L339-W30H-C-S6

Product	CCT & CRI ¹	Lens	Trim Finish
L339			S6
	W22S 2200K 80+ W27H 2700K 90+ W30H 3000K 90+ W35H 3500K 90+ W41H 4100K 90+	C clear F frosted	S6 stainless steel 316

System Components (Ordered Separately)

Remote Driver :

* Consult MP Lighting Website or Factory.

Important Notes

Specification

1. Refer to pg.2 - for Light Quality & Colour Consistency details.

Warranty Notes & Disclaimer

Malfunction and damage to product due to incompatible dimming system or misuse will not be covered under warranty. Consult MP Lighting for recommended drivers. If the fixture has an option to be installed with a dimming control system, consult a dimming system manufacturer with minimum load before installing. MP Lighting reserves the right, at its sole discretion, at any time and without notice, to make design changes to any of our products. Consult MP Lighting website for most updated documentation.

L339

EXTERIOR | INTERIOR

In-grade | Indicator, marker light for decks and floors

Wet, Damp, and Dry location



Performance

Wattage	Forward Current	Power Consumption Budget per fixture (including driver)	LED output (Source)	Fixture Output (Delivered)
0.2W	20mA	0.2W	22 lm	2.7 lm

Application

Environment	Wet / Damp / Dry Location approved. IP 68.
Drive Over Rating	9,700 lbs (4,400 kg)
Mounting	Recessed: Designed to be mounted directly into outdoor composite deck and indoor hardwood floor applications with spring clips.

Electrical

Power Supplies	Remote LED drivers (120-277V AC input, constant voltage output): Fixtures to be wired in parallel.
Control	On/off control Dimming: 0-10V dimming with appropriate drivers Other options (consult factory): TRIAC/MLV, DMX, DALI, Casambi, Power over Ethernet

Luminaire Construction

LED Light Source	W22S = CCT: 2200K, CRI (Ra): 80+, Colour Consistency: 3SDCM W27H = CCT: 2700K, CRI (Ra): 90+, Colour Consistency: 2SDCM W30H = CCT: 3000K, CRI (Ra): 90+, Colour Consistency: 2SDCM W35H = CCT: 3500K, CRI (Ra): 90+, Colour Consistency: 2SDCM W41H = CCT: 4100K, CRI (Ra): 90+, Colour Consistency: 3SDCM
Standard Compliance	✓ADA-compliant ✓WELL standard – Feature 58: Color Quality
Weight	N/A
Material	Fixture: Machined aluminum and machined stainless steel (316) with tempered glass
Supplied with	Standard installation housing: Comes with spring clips.
Warranty & LED Life	5 years limited warranty Estimated useful life of LED is 50,000 hours.

Ordered Separately

System Components	Power supplies: remote driver Please consult factory or visit Recommended Drivers for available driver options.
-------------------	---

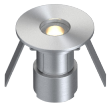
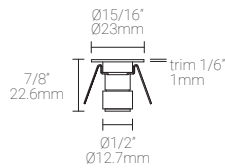
Mounting Options & Dimensions

LED Insert Dimensions

Fixture

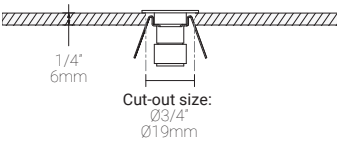
Top View

3D View



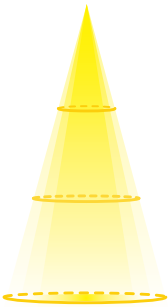
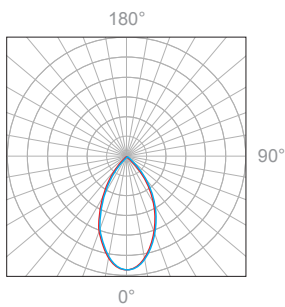
Installation with spring clips

Fixture inserted into $\varnothing 3/4"$ (19mm) cut-out hole



0.2W, 2700K, 90+ CRI

Polar Candela Distribution



Illuminance at a Distance

Distance		Center Beam fc	Beam Width			
0.2ft	0.06m	91fc	1.2ft	0.36m	1.3ft	0.39m
0.3ft	0.09m	48fc	2.5ft	0.76m	2.5ft	0.76m
0.5ft	0.15m	19fc	3.7ft	1.13m	3.8ft	1.16m
0.7ft	0.21m	10fc	4.9ft	1.49m	5.0ft	1.52m
0.8ft	0.24m	7.9fc	6.2ft	1.89m	6.3ft	1.92m
1ft	0.30m	3.6fc	7.4ft	2.26m	7.5ft	2.29m

Delivered Lumen: 2.7 lm
■ Vertical Beam Spread: 58.8°
■ Horizontal Beam Spread: 58.9°

Appendix

Stainless Steel Finish



S6 stainless steel 316