

L359

INTERIOR

In-grade | For floor, ceilings, walls, and stairs

● Dry location



Ordering Information

Clear Form

Date : _____

Project : _____

Type : _____

Quantity : _____

Note : _____

Specifications

Luminaire | Example Code: L359-7-W30H-D-S6

Product	Version	CCT & CRI	Aperture	Trim Finish ¹	
L359	3 3W	W22S 2200K 80+	S single	Aluminum Finish:	
	7 7.5W	W27H 2700K 90+	D double		MA matte clear anodized
		W30H 3000K 90+		Stainless Steel Finish:	
		W35H 3500K 90+			S6 stainless steel 316
		W41H 4100K 90+			

System Components (Ordered Separately)

Remote Driver : _____

Control System : _____

On/Off | Dimming ELV or 0-10 dimming
Other options (consult factory) TRIAC/MLV, DMX, DALI, Casambi, PoE

Important Notes

Specification

1. Different finish options are only applicable to trim ring and not for LED module housing. Refer to Appendix or MP Lighting website for complete look of luminaire with different trim finish options.

Warranty Notes & Disclaimer

Malfunction and damage to product due to incompatible dimming system or misuse will not be covered under warranty. Consult MP Lighting for recommended drivers. If the fixture has an option to be installed with a dimming control system, consult a dimming system manufacturer with minimum load before installing. MP Lighting reserves the right, at its sole discretion, at any time and without notice, to make design changes to any of our products. Consult MP Lighting website for most updated documentation.

L359

INTERIOR

In-grade | For floor, ceilings, walls, and stairs

● Dry location



Performance

Wattage	Forward Current	Power Consumption Budget per fixture (including driver)	LED output (Source)	Fixture Output (Delivered)
3W	350mA	3.0W	330 lm	1.3~2.5 lm
7.5W	700mA	7.5W	825 lm	2.2~4.0 lm

Application

Environment	Dry Location approved. IP 40
Mounting	Comes with steel flange that mounts to pre-installed standard 4" (102mm) octagonal back box (not included), 1-1/2"(38mm) deep minimum, and 1/4"(6mm) setback from face of surface material.

Electrical

Electrical	Remote LED drivers (120-277V AC input, constant current output): Fixtures to be wired in series. Remote LED drivers (120-277V AC input, constant voltage output): Fixtures to be wired in parallel.
Control	On/off control Dimming: ELV or 0-10V dimming with appropriate drivers Other options (consult factory): TRIAC/MLV, DMX, DALI, Casambi, Power over Ethernet

Luminaire Construction

LED Light Source	W22S = CCT: 2200K, CRI (Ra): 80+, Colour Consistency: 3SDCM W27H = CCT: 2700K, CRI (Ra): 90+, Colour Consistency: 2SDCM W30H = CCT: 3000K, CRI (Ra): 90+, Colour Consistency: 2SDCM W35H = CCT: 3500K, CRI (Ra): 90+, Colour Consistency: 2SDCM W41H = CCT: 4100K, CRI (Ra): 90+, Colour Consistency: 3SDCM
Weight	2.56 lbs (1.16 kg). Typical Aluminum Insert & Back Box only.
Material	Fixture: machined marine-grade aluminum or machined stainless steel (316)
Supplied with	Standard installation housing: Comes with a steel mounting flange.
Warranty & LED Life	5 years limited warranty Estimated useful life of LED is 50,000 hours.

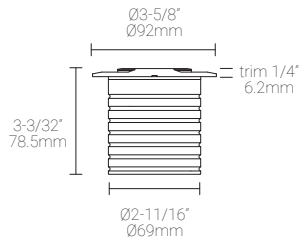
Ordered Separately

System Components	Power supplies: remote driver Please consult factory or visit Recommended Drivers for available driver options.
-------------------	---

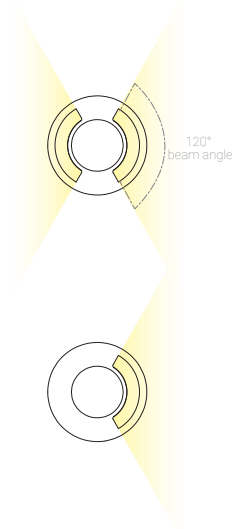
Mounting Options & Dimensions

LED Insert Dimensions

Fixture



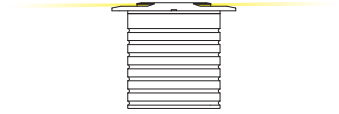
Top View



3D View (shown with double aperture)

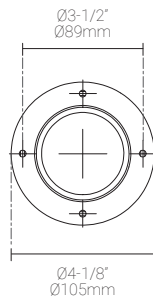
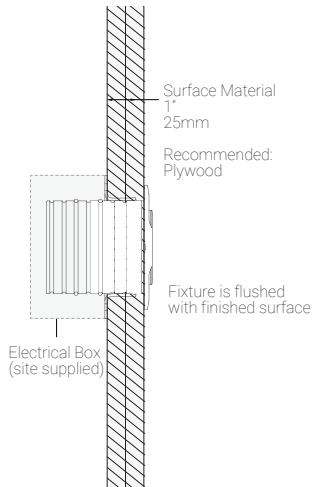


Beam



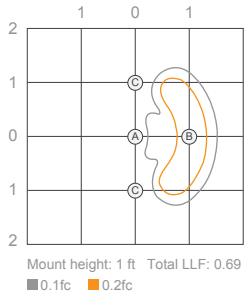
Wall Installation (shown with a mounting flange)

Fixture with a mounting flange



3W, 3000K, 90+ CRI

Isofootcandle Plot

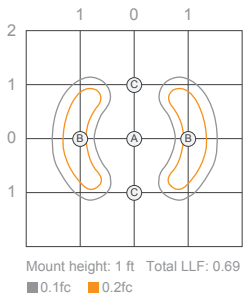


Illuminance at a Distance

Location	Center Beam fc
A	0.23fc
B	0.44fc
C	0.1fc

Delivered Lumen: 1.3lm

Isofootcandle Plot



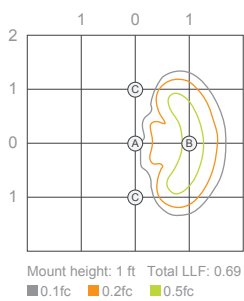
Illuminance at a Distance

Location	Center Beam fc
A	0.35fc
B	0.51fc
C	0.11fc

Delivered Lumen: 2.5lm

7.5W, 3000K, 90+ CRI

Isofootcandle Plot

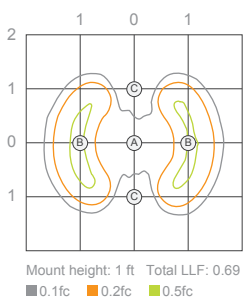


Illuminance at a Distance

Location	Center Beam fc
A	0.39fc
B	0.77fc
C	0.17fc

Delivered Lumen: 2.2lm

Isofootcandle Plot



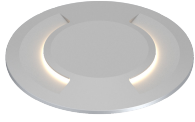
Illuminance at a Distance

Location	Center Beam fc
A	0.63fc
B	0.91fc
C	0.19fc

Delivered Lumen: 4lm

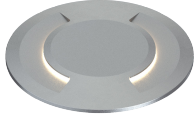
Appendix

Aluminum Finish



MA matte clear anodized

Stainless Steel Finish



S6 stainless steel 316