

L371

INTERIOR

In-grade | For floor, ceilings, walls, and stairs

- Dry location



Ordering Information Clear Form

<p>Date : _____</p> <p>Project : _____</p> <p>Type : _____</p>	<p>Quantity : _____</p> <p>Note : _____</p>
--	---

Specifications

Luminaire | Example Code: L371-2-W30H-N-C-S6

Product	Version	CCT & CRI	Beam Angle ¹	Lens	Trim Finish ²
L371					
	1 1W	W22S 2200K 80+	S spot 12°	C clear	Aluminum Finishes: MA matte clear anodized BA black anodized BZ bronze powder coated Stainless Steel Finish: S6 stainless steel 316
	2 2W	W27H 2700K 90+	N narrow flood 30°	F frosted	
		W30H 3000K 90+	W wide flood 120°		
		W35H 3500K 90+			
		W41H 4100K 90+			

System Components (Ordered Separately)

Remote Driver : _____

* Consult MP Lighting Website or Factory.

Important Notes

Specification

1. See Light Distribution section for illustration of different combinations of beam angles and angle bracket.
2. For components included, refer to Luminaire Construction section. See pg.3 for back box and flange options.
3. Different finish options are only applicable to trim ring and not for LED module housing. Refer to Appendix or MP Lighting website for complete look of luminaire with different trim finish options.

Warranty Notes & Disclaimer

Malfunction and damage to product due to incompatible dimming system or misuse will not be covered under warranty. Consult MP Lighting for recommended drivers. If the fixture has an option to be installed with a dimming control system, consult a dimming system manufacturer with minimum load before installing. MP Lighting reserves the right, at its sole discretion, at any time and without notice, to make design changes to any of our products. Consult MP Lighting website for most updated documentation.

L371

INTERIOR

In-grade | For floor, ceilings, walls, and stairs

- Dry location



Performance

Wattage	Forward Current	Power Consumption Budget per fixture (including driver)	LED output (Source)	Fixture Output (Delivered)
1W	350mA	1.3W	110 lm	47-52 lm
2W	700mA	2.6W	220 lm	75-79 lm

Application

Environment	Dry Location approved. IP 40. Ambient temperature: -4°F to 104°F (-20°C to 40°C) For lower temperature, consult MP Factory.
Mounting	Comes with FLG-L371-ZP steel flange that mounts to pre-installed standard 4" (102mm) octagonal back box (not included), 1-1/2"(38mm) deep minimum, and 1/4"(6mm) setback from face of drywall.

Electrical

Electrical	Remote LED drivers (120-277V AC input, constant current output): Fixtures to be wired in series.
Control	On/off control Dimming: ELV or 0-10V dimming with appropriate drivers Other options (consult factory): TRIAC/MLV, DMX, DALI, Casambi, Power over Ethernet

Luminaire Construction

LED Light Source	W22S = CCT: 2200K, CRI (Ra): 80+, Colour Consistency: 3SDCM W27H = CCT: 2700K, CRI (Ra): 90+, Colour Consistency: 2SDCM W30H = CCT: 3000K, CRI (Ra): 90+, Colour Consistency: 2SDCM W35H = CCT: 3500K, CRI (Ra): 90+, Colour Consistency: 2SDCM W41H = CCT: 4100K, CRI (Ra): 90+, Colour Consistency: 3SDCM
Weight	N/A
Material	Fixture: machined solid anodized aluminum or machined stainless steel (316) with tempered glass
Supplied with	Standard installation housing: Comes with a steel mounting flange.
Warranty & LED Life	5 years limited warranty Estimated useful life of LED is 50,000 hours.

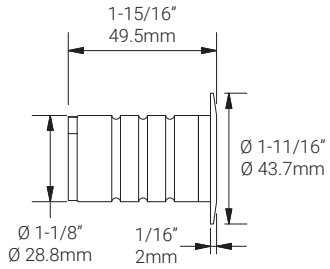
Ordered Separately

System Components	Power supplies: remote driver Please consult factory or visit Recommended Drivers for available driver options.
-------------------	---

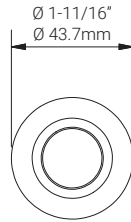
Mounting Options & Dimensions

LED Insert Dimensions

Fixture



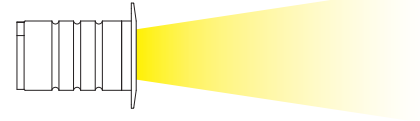
Top View



3D View

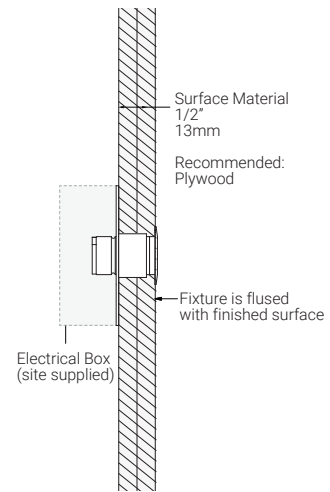
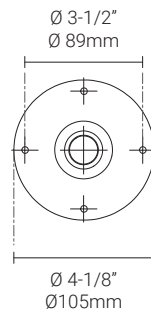
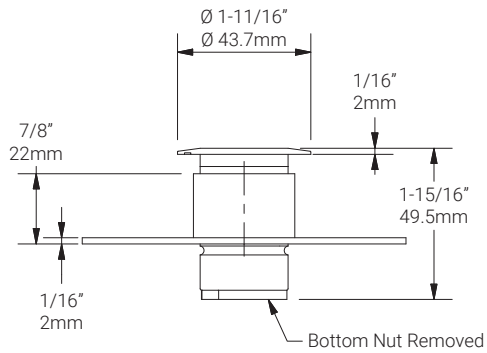


Beam



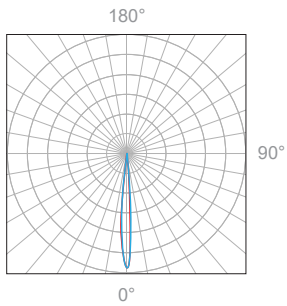
Wall Installation (shown with FLG-L371-ZP mounting flange)

Fixture with a mounting flange



1W, 3000K, 90+ CRI

Polar Candela Distribution



Beam Width: 12°

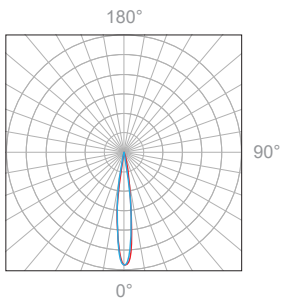


Illuminance at a Distance

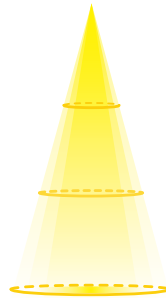
Distance		Center Beam fc	Beam Width			
1.5ft	0.46m	165.4fc	0.5ft	0.15m	0.5ft	0.15m
3.0ft	0.91m	41.6fc	1.0ft	0.30m	1.0ft	0.30m
4.5ft	1.37m	19.2fc	1.6ft	0.49m	1.6ft	0.49m
6.0ft	1.83m	10.7fc	2.1ft	0.64m	2.1ft	0.64m
7.5ft	2.29m	7.0fc	2.6ft	0.79m	2.6ft	0.79m
9.0ft	2.74m	5.0fc	3.1ft	0.95m	3.1ft	0.95m

Delivered Lumen: 49lm
 ■ Vertical Beam Spread: 19.8°
 ■ Horizontal Beam Spread: 19.8°

Polar Candela Distribution



Beam Width: 30°

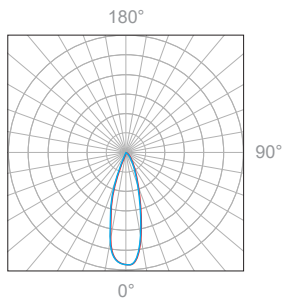


Illuminance at a Distance

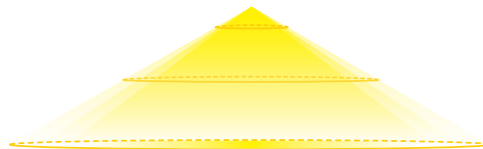
Distance		Center Beam fc	Beam Width			
1.5ft	0.46m	100.3fc	0.8ft	0.24m	0.8ft	0.24m
3.0ft	0.91m	25.6fc	1.7ft	0.52m	1.6ft	0.49m
4.5ft	1.37m	11.7fc	2.5ft	0.76m	2.5ft	0.76m
6.0ft	1.83m	6.8fc	3.3ft	1.01m	3.3ft	1.01m
7.5ft	2.29m	4.4fc	4.2ft	1.28m	4.1ft	1.25m
9.0ft	2.74m	3.0fc	5.0ft	1.52m	4.9ft	1.52m

Delivered Lumen: 62lm
 ■ Vertical Beam Spread: 31.2°
 ■ Horizontal Beam Spread: 30.7°

Polar Candela Distribution



Beam Width: 120°

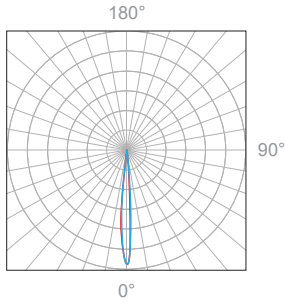


Illuminance at a Distance

Distance		Center Beam fc	Beam Width			
1.5ft	0.46m	18.1fc	4.8ft	1.46m	4.9ft	1.49m
3.0ft	0.91m	4.4fc	9.6ft	2.93m	9.8ft	2.99m
4.5ft	1.37m	2.0fc	14.4ft	4.39m	14.7ft	4.48m
6.0ft	1.83m	1.2fc	19.3ft	5.88m	19.6ft	5.97m
7.5ft	2.29m	0.8fc	24.1ft	7.35m	24.5ft	7.47m
9.0ft	2.74m	0.5fc	28.9ft	8.81m	29.4ft	8.96m

Delivered Lumen: 47lm
 ■ Vertical Beam Spread : 116.1°
 ■ Horizontal Beam Spread : 117.1°

Polar Candela Distribution



Beam Width: 12°



Illuminance at a Distance

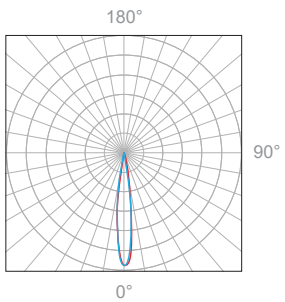
Distance		Center Beam fc	Beam Width			
1.5ft	0.46m	319fc	0.5ft	0.15m	0.5ft	0.15m
3.0ft	0.91m	75.8fc	1.0ft	0.30m	1.0ft	0.30m
4.5ft	1.37m	34.1fc	1.6ft	0.49m	1.6ft	0.49m
6.0ft	1.83m	20.3fc	2.1ft	0.64m	2.1ft	0.64m
7.5ft	2.29m	11.7fc	2.6ft	0.79m	2.6ft	0.79m
9.0ft	2.74m	9fc	3.1ft	0.95m	3.1ft	0.95m

Delivered Lumen: 78lm

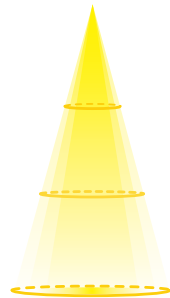
■ Vertical Beam Spread: 19.2°

■ Horizontal Beam Spread: 19.2°

Polar Candela Distribution



Beam Width: 30°



Illuminance at a Distance

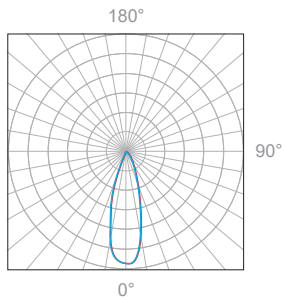
Distance		Center Beam fc	Beam Width			
1.5ft	0.46m	193.1fc	0.8ft	0.24m	0.8ft	0.52m
3.0ft	0.91m	48fc	1.5ft	0.46m	1.5ft	0.46m
4.5ft	1.37m	21.3fc	2.3ft	0.70m	2.3ft	0.70m
6.0ft	1.83m	11.7fc	3.1ft	0.94m	3.0ft	0.91m
7.5ft	2.29m	7.5fc	3.8ft	1.16m	3.8ft	1.16m
9.0ft	2.74m	5.4fc	4.6ft	1.40m	10.4ft	1.40m

Delivered Lumen: 79lm

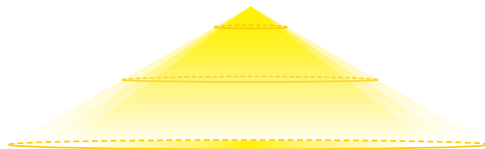
■ Vertical Beam Spread: 28.5°

■ Horizontal Beam Spread: 28.5°

Polar Candela Distribution



Beam Width: 120°



Illuminance at a Distance

Distance		Center Beam fc	Beam Width			
1.5ft	0.46m	30.9fc	4.8ft	1.46m	4.9ft	1.49m
3.0ft	0.91m	7.9fc	9.6ft	2.93m	9.7ft	2.96m
4.5ft	1.37m	3.6fc	14.4ft	4.39m	14.6ft	4.45m
6.0ft	1.83m	2.0fc	19.2ft	5.85m	19.4ft	5.91m
7.5ft	2.29m	1.5fc	24.0ft	7.32m	24.3ft	7.41m
9.0ft	2.74m	0.9fc	28.9ft	8.81m	29.1ft	8.87m

Delivered Lumen: 75lm

■ Vertical Beam Spread : 116.1°

■ Horizontal Beam Spread : 116.6°

Appendix

Aluminum Finishes



MA matte clear anodized



BA black anodized



BZ bronze powder coated

Stainless Steel Finish



S6 stainless steel 316