

L373

INTERIOR

In-grade | For floor, ceilings, walls, and stairs

- Dry location



Ordering Information

Clear Form

Date :	_____	Quantity :	_____
Project :	_____	Note :	_____
Type :	_____		_____

Specifications

Luminaire | Example Code: L373-2-W30H-N-C-S6

Product	Wattage	CCT & CRI	Beam Angle	Lens	Trim Finish ¹
L373					
	1 1W	W22S 2200K 80+	S spot 12°	C clear	Aluminum Finishes: MA matte clear anodized BA black anodized BZ bronze powder coated Stainless Steel Finish: S6 stainless steel 316
	2 2W	W27H 2700K 90+	N narrow flood 30°	F frosted	
		W30H 3000K 90+	W wide flood 120°		
		W35H 3500K 90+			
		W41H 4100K 90+			

System Components (Ordered Separately)

Remote Driver :	_____	Control System :	_____
-----------------	-------	------------------	-------

On/Off | Dimming ELV or 0-10 dimming
Other options (consult factory) TRIAC/MLV, DMX, DALI, Casambi, PoE

Important Notes

Specification

1. Different finish options are only applicable to trim ring and not for LED module housing. Refer to Appendix or MP Lighting website for complete look of luminaire with different trim finish options.

Warranty Notes & Disclaimer

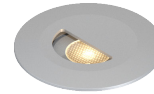
Malfunction and damage to product due to incompatible dimming system or misuse will not be covered under warranty. Consult MP Lighting for recommended drivers. If the fixture has an option to be installed with a dimming control system, consult a dimming system manufacturer with minimum load before installing. MP Lighting reserves the right, at its sole discretion, at any time and without notice, to make design changes to any of our products. Consult MP Lighting website for most updated documentation.

L373

INTERIOR

In-grade | For floor, ceilings, walls, and stairs

- Dry location



Performance

Wattage	Forward Current	Power Consumption Budget per fixture (including driver)	LED output (Source)	Fixture Output (Delivered)
1W	350mA	1.3W	110 lm	29-33 lm
2W	700mA	2.6W	220 lm	47-53 lm

Application

Environment	Dry Location approved. IP 40.
Drive Over Rating	9,700 lbs (4,400 kg)
Mounting	Comes with steel flange (FLG-L371-ZP) that mounts to pre-installed standard 4" (102mm) octagonal back box (not included), 1-1/2"(38mm) deep minimum, and 1/4"(6mm) setback from face of finished surface material.

Electrical

Power Supplies	Remote LED drivers (120-277V AC input, constant current output): Fixtures to be wired in series.
Control	On/off control Dimming: ELV or 0-10V dimming with appropriate drivers Other options (consult factory): TRIAC/MLV, DMX, DALI, Casambi, Power over Ethernet

Luminaire Construction

LED Light Source	W22S = CCT: 2200K, CRI (Ra): 80+, Colour Consistency: 3SDCM W27H = CCT: 2700K, CRI (Ra): 90+, Colour Consistency: 2SDCM W30H = CCT: 3000K, CRI (Ra): 90+, Colour Consistency: 2SDCM W35H = CCT: 3500K, CRI (Ra): 90+, Colour Consistency: 2SDCM W41H = CCT: 4100K, CRI (Ra): 90+, Colour Consistency: 3SDCM
Weight	1.8 lbs (0.816 kg). Typical Aluminum Insert & Back Box only.
Weight	N/A
Material	Fixture: machined solid anodized aluminum or machined stainless steel (316) with tempered glass
Supplied with	Standard installation housing: Comes with a steel mounting flange.
Warranty & LED Life	5 years limited warranty Estimated useful life of LED is 50,000 hours.

Ordered Separately

System Components	Power supplies: remote driver Please consult factory or visit Recommended Drivers for available driver options.
-------------------	---

Mounting Options & Dimensions

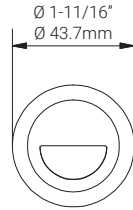
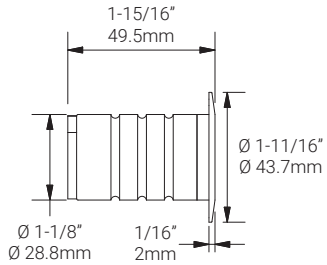
LED Insert Dimensions

Fixture

Top View

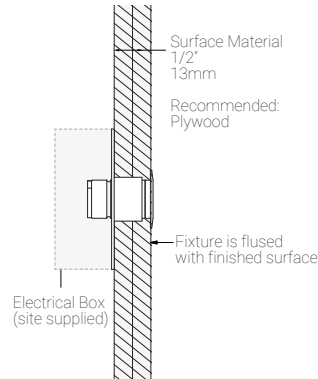
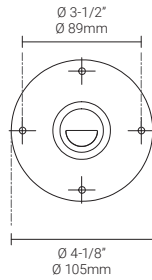
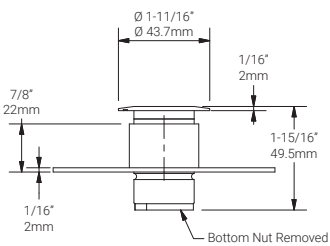
3D View

Beam



Wall Installation (shown with FLG-L371-ZP mounting flange)

Fixture with a mounting flange



Appendix

Aluminum Finishes



MA matte clear anodized



BA black anodized



BZ bronze powder coated

Stainless Steel Finishes

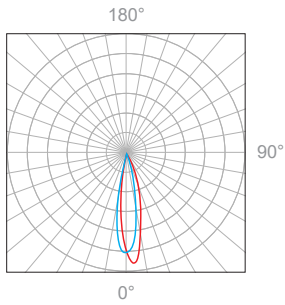


S6 polished stainless steel 316

1W, 3000K, 90+ CRI

Polar Candela Distribution

Beam Width: 12°



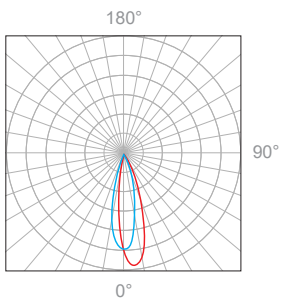
Illuminance at a Distance

Distance		Center Beam fc	Beam Width			
1.5ft	0.46m	162fc	0.6ft	0.18m	0.5ft	0.15m
3.0ft	0.91m	37fc	1.1ft	0.34m	1.1ft	0.34m
4.5ft	1.37m	17fc	1.7ft	0.52m	1.6ft	0.49m
6.0ft	1.83m	9.8fc	2.3ft	0.70m	2.2ft	0.67m
7.5ft	2.29m	6.2fc	2.9ft	0.88m	2.7ft	0.82m
9.0ft	2.74m	4.3fc	3.4ft	1.04m	3.2ft	0.98m

Delivered Lumen: 33lm
 ■ Vertical Beam Spread: 21.6°
 ■ Horizontal Beam Spread: 20.1°

Polar Candela Distribution

Beam Width: 30°



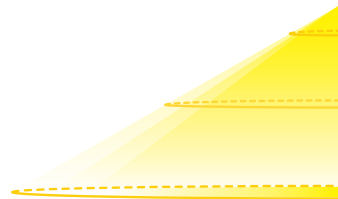
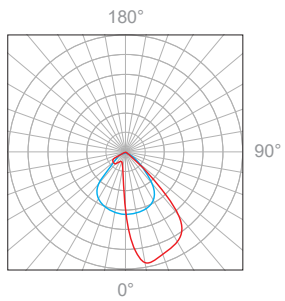
Illuminance at a Distance

Distance		Center Beam fc	Beam Width			
1.5ft	0.46m	110fc	0.8ft	0.24m	0.6ft	0.18m
3.0ft	0.91m	28fc	1.6ft	0.49m	1.3ft	0.40m
4.5ft	1.37m	12fc	2.4ft	0.73m	1.9ft	0.58m
6.0ft	1.83m	7.1fc	3.2ft	0.98m	2.6ft	0.79m
7.5ft	2.29m	4.4fc	4.0ft	1.22m	3.2ft	0.98m
9.0ft	2.74m	3.1fc	4.8ft	1.46m	3.8ft	1.16m

Delivered Lumen: 33lm
 ■ Vertical Beam Spread: 29.9°
 ■ Horizontal Beam Spread: 24.1°

Polar Candela Distribution

Beam Width: 120°



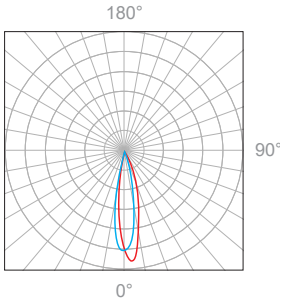
Illuminance at a Distance

Distance		Center Beam fc	Beam Width			
1.5ft	0.46m	15fc	2.7ft	0.82m	1.2ft	0.37m
3.0ft	0.91m	3.9fc	5.4ft	1.65m	2.5ft	0.76m
4.5ft	1.37m	1.8fc	8.0ft	2.4m	3.7ft	1.13m
6.0ft	1.83m	1fc	10.7ft	3.26m	4.9ft	1.49m
7.5ft	2.29m	0.66fc	13.4ft	4.08m	6.1ft	1.86m
9.0ft	2.74m	0.48fc	16.1ft	4.91m	7.4ft	2.26m

Delivered Lumen: 29lm
 ■ Vertical Beam Spread: 83.6°
 ■ Horizontal Beam Spread: 44.4°

2W, 3000K, 90+ CRI

Polar Candela Distribution



Beam Width: 12°

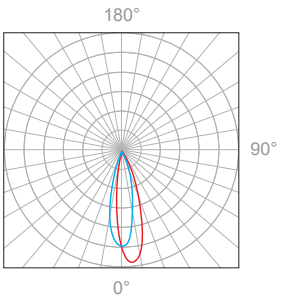


Illuminance at a Distance

Distance		Center Beam fc	Beam Width			
1.5ft	0.46m	319fc	0.6ft	0.18m	0.5ft	0.15m
3.0ft	0.91m	75.8fc	1.1ft	0.34m	1.1ft	0.34m
4.5ft	1.37m	34.1fc	1.7ft	0.52m	1.6ft	0.49m
6.0ft	1.83m	20.3fc	2.3ft	0.70m	2.2ft	0.67m
7.5ft	2.29m	11.7fc	2.9ft	0.88m	2.7ft	0.82m
9.0ft	2.74m	9fc	3.4ft	1.04m	3.2ft	0.98m

Delivered Lumen: 53.2lm
 ■ Vertical Beam Spread: 21.5°
 ■ Horizontal Beam Spread: 20.1°

Polar Candela Distribution



Beam Width: 30°

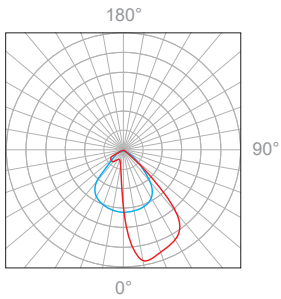


Illuminance at a Distance

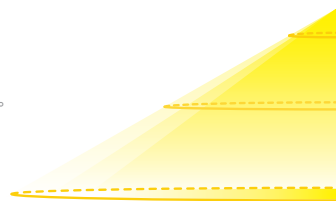
Distance		Center Beam fc	Beam Width			
1.5ft	0.46m	193.1fc	0.8ft	0.24m	0.6ft	0.18m
3.0ft	0.91m	48fc	1.6ft	0.49m	1.3ft	0.40m
4.5ft	1.37m	21.3fc	2.4ft	0.73m	1.9ft	0.58m
6.0ft	1.83m	11.7fc	3.2ft	0.98m	2.6ft	0.79m
7.5ft	2.29m	7.5fc	4.0ft	1.22m	3.2ft	0.98m
9.0ft	2.74m	5.4fc	4.8ft	1.46m	3.8ft	1.16m

Delivered Lumen: 52.4lm
 ■ Vertical Beam Spread: 30°
 ■ Horizontal Beam Spread: 24.5°

Polar Candela Distribution



Beam Width: 120°



Illuminance at a Distance

Distance		Center Beam fc	Beam Width			
1.5ft	0.46m	30.9fc	2.7ft	0.82m	1.2ft	0.37m
3.0ft	0.91m	7.9fc	5.4ft	1.65m	2.5ft	0.76m
4.5ft	1.37m	3.6fc	8.0ft	2.4m	3.7ft	1.13m
6.0ft	1.83m	2.0fc	10.7ft	3.26m	4.9ft	1.49m
7.5ft	2.29m	1.5fc	13.4ft	4.08m	6.1ft	1.86m
9.0ft	2.74m	0.9fc	16.1ft	4.91m	7.4ft	2.26m

Delivered Lumen: 47.2lm
 ■ Vertical Beam Spread : 83.6°
 ■ Horizontal Beam Spread : 44.4°