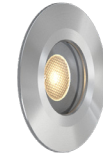


L379

UNDERWATER: FRESHWATER

In-grade | Submersible under water up to 10' (3m) depth.

- Underwater Certified



Ordering Information Clear Form

Date : _____	Quantity : _____
Project : _____	Note : _____
Type : _____	_____

Specifications

Luminaire | Example Code: L379-2-W30H-N-C-15-S6

Product	Version	CCT & CRI	Beam Angle ¹	Lens	Lead Length	Trim Finish
L379						
	1 1W	W22S 2200K 80+	S spot 12°	C clear	15 15' (4572mm)	Stainless Steel Finish: S6 stainless steel 316
	2 2W	W27H 2700K 90+	N narrow flood 30°	F frosted	X custom	
		W30H 3000K 90+	W wide flood 120°			
		W35H 3500K 90+				
		W41H 4100K 90+				

System Components (Ordered Separately)

Remote Driver : _____

* Consult MP Lighting Website or Factory.

Important Notes

Specification

1. See *Light Distribution* section for illustration of different combinations of beam angles and angle bracket.

Warranty Notes & Disclaimer

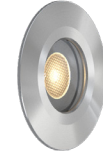
Malfunction and damage to product due to incompatible dimming system or misuse will not be covered under warranty. Consult MP Lighting for recommended drivers. If the fixture has an option to be installed with a dimming control system, consult a dimming system manufacturer with minimum load before installing. MP Lighting reserves the right, at its sole discretion, at any time and without notice, to make design changes to any of our products. Consult MP Lighting website for most updated documentation.

L379

UNDERWATER: FRESHWATER

In-grade | Submersible under water up to 10' (3m) depth.

- Underwater Certified



Performance

Wattage	Forward Current	Power Consumption Budget per fixture (including driver)	LED output (Source)	Fixture Output (Delivered)
1W	350mA	1.3W	110 lm	47-62 lm
2W	700mA	2.6W	220 lm	75-79 lm

Application

Environment	Underwater Location Approved. IP 68.
Mounting	Recessed: Designed to be cast into earth, gravel, or concrete for submersed applications. MK1 mounting kit (optional): Recommended for easy installation on vertical surfaces (e.g. stair risers, walls), and downward-facing surfaces (e.g. ceilings, soffits). See "Mounting Options & Dimensions" or visit MK1

Electrical

Electrical	Remote LED drivers (120-277V AC input, constant current output): Fixtures to be wired in series. Remote LED drivers (120-277V AC input, constant voltage output): Fixtures to be wired in parallel.
Control	On/off control Dimming: ELV or 0-10V dimming with appropriate drivers. Other options (consult factory): TRIAC/MLV, DMX, DALI, Casambi, Power over Ethernet.

Luminaire Construction

LED Light Source	W22S = CCT: 2200K, CRI (Ra): 80+, Colour Consistency: 3SDCM W27H = CCT: 2700K, CRI (Ra): 90+, Colour Consistency: 2SDCM W30H = CCT: 3000K, CRI (Ra): 90+, Colour Consistency: 2SDCM W35H = CCT: 3500K, CRI (Ra): 90+, Colour Consistency: 2SDCM W41H = CCT: 4100K, CRI (Ra): 90+, Colour Consistency: 3SDCM
Weight	1.8lbs (0.816kg). Typical Aluminum Insert & Back Box only.
Material	Fixture: machined stainless steel (316) with tempered glass.
Supplied with	Standard installation housing: Comes with a stainless steel (304) square back box, a brass/stainless steel (316) flange, a 15' (4.57m) wire lead, an integral leveling device, a plastic cap, gel filled wire nuts, and silicone grease.
Warranty & LED Life	5 years limited warranty. Estimated useful life of LED is 50,000 hours.

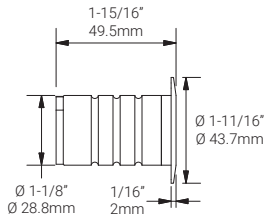
Ordered Separately

System Components	Power supplies: remote driver Please consult factory or visit Recommended Drivers for available driver options.
-------------------	---

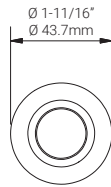
Mounting Options & Dimensions

LED Insert Dimensions

Fixture



Top View



3D View

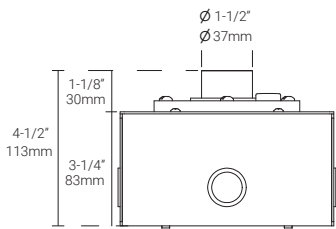


Beam

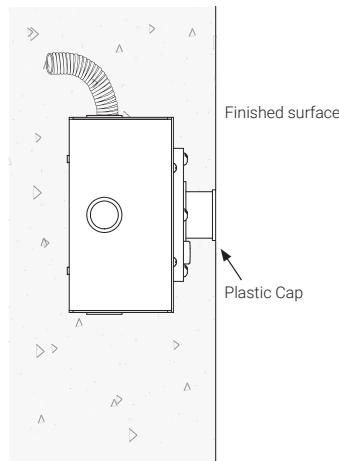


Concrete Installation (shown with MP Lighting Back Box | Order Code: **EBX-SQR1-BSMA**)

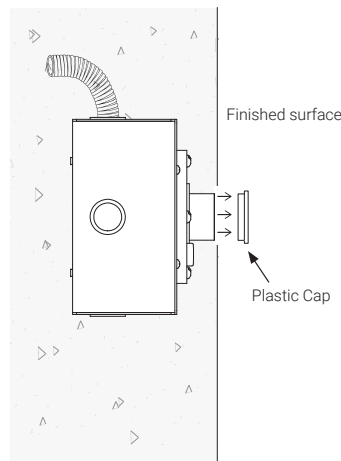
Box with Standard Flange



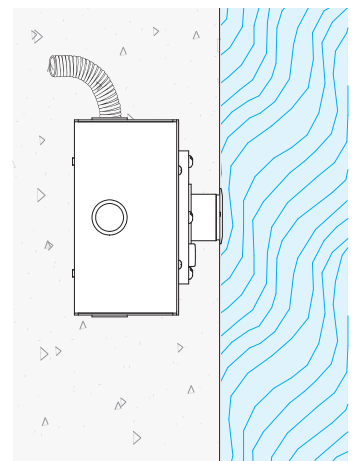
Box with Short Flange:
During Concrete Installation



Box with Short Flange:
Complete Concrete Installation



Box with Short Flange:
Complete Concrete Installation



Appendix

Stainless Steel Finish



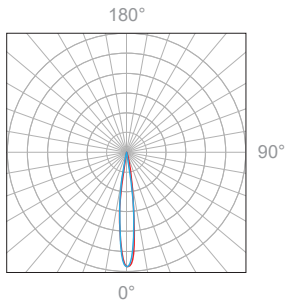
S6 stainless steel 316

1W, 3000K, 90+ CRI | shown with clear lens

Polar Candela Distribution

Beam Width: 12°

Illuminance at a Distance



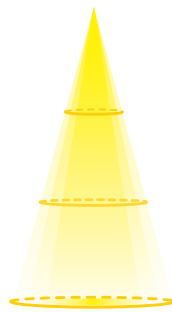
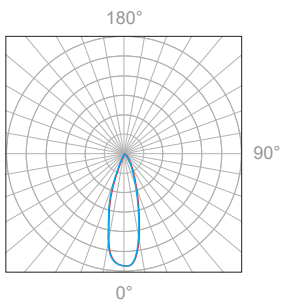
Distance		Center Beam fc	Beam Width			
1.5ft	0.46m	115fc	0.5ft	0.15m	0.5ft	0.15m
3.0ft	0.91m	28.6fc	1.0ft	0.30m	1.0ft	0.30m
4.5ft	1.37m	12.7fc	1.6ft	0.49m	1.6ft	0.49m
6.0ft	1.83m	7.16fc	2.1ft	0.64m	2.1ft	0.64m
7.5ft	2.29m	4.58fc	2.6ft	0.79m	2.6ft	0.79m
9.0ft	2.74m	3.18fc	3.1ft	0.95m	3.1ft	0.95m

Delivered Lumen: 49lm
 ■ Vertical Beam Spread: 19.8°
 ■ Horizontal Beam Spread: 19.8°

Polar Candela Distribution

Beam Width: 30°

Illuminance at a Distance



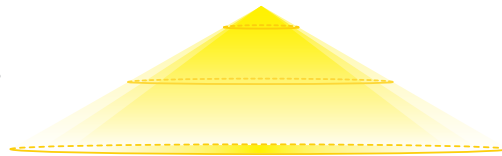
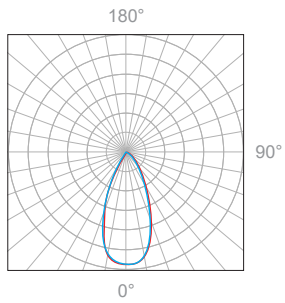
Distance		Center Beam fc	Beam Width			
1.5ft	0.46m	43.3fc	0.8ft	0.24m	0.8ft	0.24m
3.0ft	0.91m	10.8fc	1.7ft	0.52m	1.6ft	0.49m
4.5ft	1.37m	4.81fc	2.5ft	0.76m	2.5ft	0.76m
6.0ft	1.83m	2.71fc	3.3ft	1.01m	3.3ft	1.01m
7.5ft	2.29m	1.73fc	4.2ft	1.28m	4.1ft	1.25m
9.0ft	2.74m	1.20fc	5.0ft	1.52m	4.9ft	1.52m

Delivered Lumen: 62lm
 ■ Vertical Beam Spread: 31.2°
 ■ Horizontal Beam Spread: 30.7°

Polar Candela Distribution

Beam Width: 120°

Illuminance at a Distance



Distance		Center Beam fc	Beam Width			
1.5ft	0.46m	6.65fc	4.8ft	1.46m	4.9ft	1.49m
3.0ft	0.91m	1.66fc	9.6ft	2.93m	9.8ft	2.99m
4.5ft	1.37m	0.74fc	14.4ft	4.39m	14.7ft	4.48m
6.0ft	1.83m	0.42fc	19.3ft	5.88m	19.6ft	5.97m
7.5ft	2.29m	0.27fc	24.1ft	7.35m	24.5ft	7.47m
9.0ft	2.74m	0.18fc	28.9ft	8.81m	29.4ft	8.96m

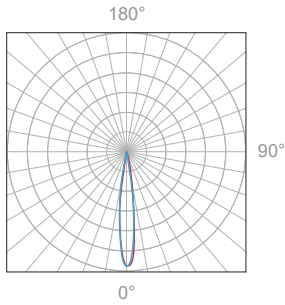
Delivered Lumen: 47lm
 ■ Vertical Beam Spread : 116.1°
 ■ Horizontal Beam Spread : 117.1°

2W, 3000K, 90+ CRI | shown with clear lens

Polar Candela Distribution

Beam Width: 12°

Illuminance at a Distance



Distance		Center Beam fc	Beam Width			
1.5ft	0.46m	190fc	0.5ft	0.15m	0.5ft	0.15m
3.0ft	0.91m	47.6fc	1.0ft	0.30m	1.0ft	0.30m
4.5ft	1.37m	21.2fc	1.6ft	0.49m	1.6ft	0.49m
6.0ft	1.83m	11.9fc	2.1ft	0.64m	2.1ft	0.64m
7.5ft	2.29m	7.62fc	2.6ft	0.79m	2.6ft	0.79m
9.0ft	2.74m	5.29fc	3.1ft	0.95m	3.1ft	0.95m

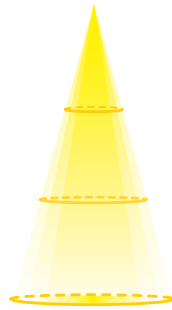
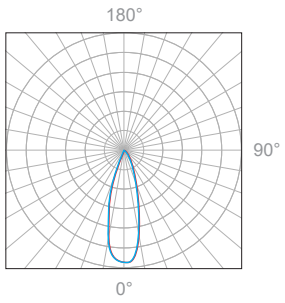
Delivered Lumen: 78lm

- Vertical Beam Spread: 19.2°
- Horizontal Beam Spread: 19.2°

Polar Candela Distribution

Beam Width: 30°

Illuminance at a Distance



Distance		Center Beam fc	Beam Width			
1.5ft	0.46m	127fc	0.8ft	0.24m	0.8ft	0.52m
3.0ft	0.91m	31.9fc	1.5ft	0.46m	1.5ft	0.46m
4.5ft	1.37m	14.2fc	2.3ft	0.70m	2.3ft	0.70m
6.0ft	1.83m	7.97fc	3.1ft	0.94m	3.0ft	0.91m
7.5ft	2.29m	5.10fc	3.8ft	1.16m	3.8ft	1.16m
9.0ft	2.74m	3.54fc	4.6ft	1.40m	10.4ft	1.40m

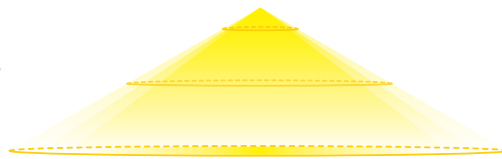
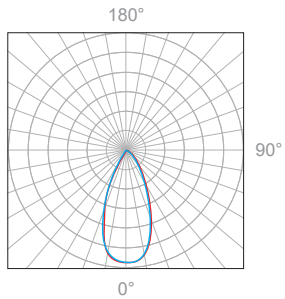
Delivered Lumen: 79lm

- Vertical Beam Spread: 28.5°
- Horizontal Beam Spread: 28.5°

Polar Candela Distribution

Beam Width: 120°

Illuminance at a Distance



Distance		Center Beam fc	Beam Width			
1.5ft	0.46m	10.7fc	4.8ft	1.46m	4.9ft	1.49m
3.0ft	0.91m	2.67fc	9.6ft	2.93m	9.7ft	2.96m
4.5ft	1.37m	1.19fc	14.4ft	4.39m	14.6ft	4.45m
6.0ft	1.83m	0.67fc	19.2ft	5.85m	19.4ft	5.91m
7.5ft	2.29m	0.43fc	24.0ft	7.32m	24.3ft	7.41m
9.0ft	2.74m	0.30fc	28.9ft	8.81m	29.1ft	8.87m

Delivered Lumen: 75lm

- Vertical Beam Spread : 116.1°
- Horizontal Beam Spread : 116.6°