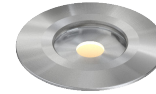


# L382

EXTERIOR | INTERIOR  
In-grade | For decks and floors

- Wet, Damp, and Dry location



## Ordering Information

Clear Form

Date : \_\_\_\_\_

Quantity : \_\_\_\_\_

Project : \_\_\_\_\_

Note : \_\_\_\_\_

Type : \_\_\_\_\_

## Specifications

Luminaire | Example Code: L382-1-W30H-S-C-S6

Product	Version	CCT & CRI	Beam Angle	Lens	Trim Finish
<b>L382</b>				<b>C</b>	<b>S6</b>
	1 1W	<b>W22S</b> 2200K 80+ <b>W27H</b> 2700K 90+ <b>W30H</b> 3000K 90+ <b>W35H</b> 3500K 90+ <b>W41H</b> 4100K 90+	<b>S</b> spot 27° <b>N</b> narrow flood 39° <b>F</b> flood 80°	C clear	<b>Stainless Steel Finish:</b> <b>S6</b> stainless steel 316

### System Components (Ordered Separately)

Remote Driver : \_\_\_\_\_

\* Consult MP Lighting Website or Factory.

### Important Notes

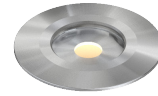
#### Warranty Notes & Disclaimer

*Malfunction and damage to product due to incompatible dimming system or misuse will not be covered under warranty. Consult MP Lighting for recommended drivers. If the fixture has an option to be installed with a dimming control system, consult a dimming system manufacturer with minimum load before installing. MP Lighting reserves the right, at its sole discretion, at any time and without notice, to make design changes to any of our products. Consult MP Lighting website for most updated documentation.*

# L382

EXTERIOR | INTERIOR  
In-grade | For decks and floors

• Wet, Damp, and Dry location



## Performance

Wattage	Forward Current	Power Consumption Budget per fixture (including driver)	LED output (Source)	Fixture Output (Delivered)
1W	350mA	1.3W	110 lm	73.4~85.8 lm

## Application

Environment	Dry / Damp / Wet Location approved. IP 66.
Drive Over Rating	9,700 lbs (4,400 kg)
Mounting	<b>Recessed:</b> Designed to be inserted into surfaces where a non-obtrusive luminaire is required. Included spring clips. <b>Cut-out size:</b> 1-1/2" (38mm)

## Electrical

Electrical	Compatible with remote constant current DC driver, wiring in series.
Control	On/off control or phase dimming or 0-10V dimming with appropriate remote dimmable driver.

## Luminaire Construction

LED Light Source	<b>W22S</b> = CCT: 2200K, CRI (Ra): 80+, Colour Consistency: 3SDCM <b>W27H</b> = CCT: 2700K, CRI (Ra): 90+, Colour Consistency: 2SDCM <b>W30H</b> = CCT: 3000K, CRI (Ra): 90+, Colour Consistency: 2SDCM <b>W35H</b> = CCT: 3500K, CRI (Ra): 90+, Colour Consistency: 2SDCM <b>W41H</b> = CCT: 4100K, CRI (Ra): 90+, Colour Consistency: 3SDCM
Weight	N/A
Material	<b>Fixture:</b> Machined stainless steel (316) with tempered glass
Supplied with	<b>Standard installation housing:</b> Comes with spring clips.
Warranty & LED Life	5 years limited warranty Estimated useful life of LED is 50,000 hours.

## Ordered Separately

System Components	<b>Power supplies:</b> remote driver
-------------------	--------------------------------------

Mounting Options & Dimensions

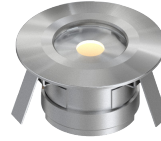
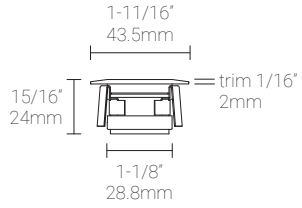
LED Insert Dimensions

Fixture

Top View

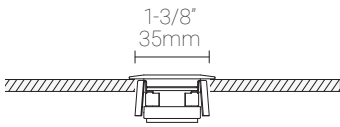
3D View

Beam



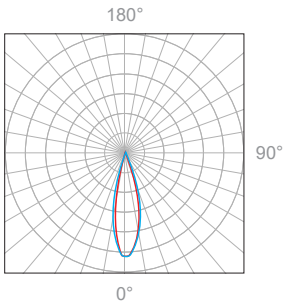
Installation

Fixture inserted into 1-3/8" (35mm) cutout hole

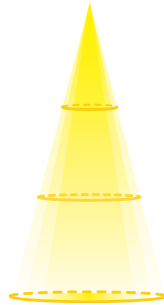


1W, 3000K, 90+ CRI

**Polar Candela Distribution**



**Beam Width: 27°**

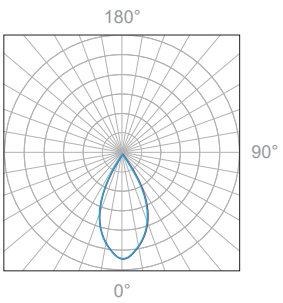


**Illuminance at a Distance**

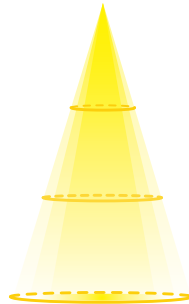
Distance		Center Beam fc	Beam Width			
1.5ft	0.46m	113fc	0.7ft	0.21m	0.7ft	0.21m
3.0ft	0.91m	28.2fc	1.5ft	0.45m	1.5ft	0.45m
4.5ft	1.37m	12.5fc	2.2ft	0.67m	2.2ft	0.67m
6.0ft	1.83m	7.06fc	2.9ft	0.88m	2.9ft	0.88m
7.5ft	2.29m	4.52fc	3.6ft	1.09m	3.7ft	1.12m
9.0ft	2.74m	3.14fc	4.4ft	1.34m	4.4ft	1.34m

Delivered Lumen: 73.4 lm  
 ■ Vertical Beam Spread: 27.3°  
 ■ Horizontal Beam Spread: 27.4°

**Polar Candela Distribution**



**Beam Width: 39°**

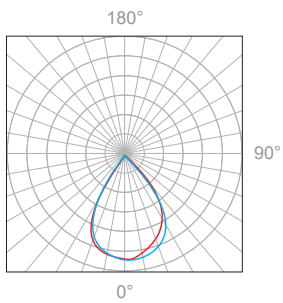


**Illuminance at a Distance**

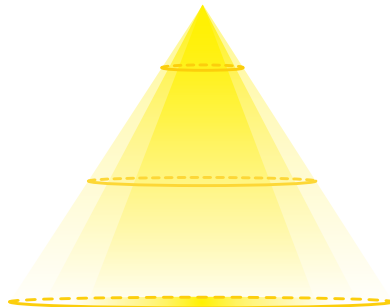
Distance		Center Beam fc	Beam Width			
1.5ft	0.46m	77.2fc	1.1ft	0.33m	1.1ft	0.33m
3.0ft	0.91m	19.3fc	2.1ft	0.64m	2.1ft	0.64m
4.5ft	1.37m	8.58fc	3.2ft	0.97m	3.2ft	0.97m
6.0ft	1.83m	4.82fc	4.2ft	1.28m	4.3ft	1.31m
7.5ft	2.29m	3.09fc	5.3ft	1.61m	5.3ft	1.61m
9.0ft	2.74m	2.14fc	6.3ft	1.92m	6.4ft	1.95m

Delivered Lumen: 85.8 lm  
 ■ Vertical Beam Spread: 38.7°  
 ■ Horizontal Beam Spread: 39.1°

**Polar Candela Distribution**



**Beam Width: 80°**



**Illuminance at a Distance**

Distance		Center Beam fc	Beam Width			
3.0ft	0.91m	4.29fc	5.1ft	1.55m	4.9ft	1.49m
6.0ft	1.83m	1.07fc	10.3ft	3.14m	9.8ft	2.98m
9.0ft	2.74m	0.48fc	15.4ft	4.69m	14.7ft	4.48m
12.0ft	3.65m	0.27fc	20.6ft	6.27m	19.6ft	5.97m
15.0ft	4.57m	0.27fc	25.7ft	7.83m	24.6ft	7.49m
18.0ft	5.48m	0.12fc	30.8ft	9.38m	29.5ft	8.99m

Delivered Lumen: 65.4 lm  
 ■ Vertical Beam Spread: 81.2°  
 ■ Horizontal Beam Spread: 78.6°