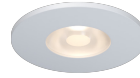


L517

INTERIOR

Downlight | For open and bulkhead ceilings

● Dry location



Shown with with **NA** (no accessories)



Shown with with **SH** (metal shroud, silver)
* Refer to Appendix for other shroud options.

Ordering Information

Clear Form

Date : _____

Quantity : _____

Project : _____

Note : _____

Type : _____

Specifications

Luminaire | Example Code: L517-C-3-W30H-N-NA-MA

Product	Mounting	Version	CCT & CRI ¹	Beam Angle	Shrouds/Accessories (optional)	Finish ²
L517	C	4				
	C coil spring clip	4 4W	W27H 2700K 90+ W30H 3000K 90+	S spot 12° N narrow flood 15° F flood 26° W wide flood 45°	NA no accessories SH metal shroud, silver SHB metal shroud, black	Aluminum Finishes: MA matte clear anodized BA black anodized BZ bronze WH white powder coat

System Components (Ordered Separately)

Remote Driver : _____

* Consult MP Lighting Website or Factory.

Important Notes

Specification

1. Refer to pg.2 - for Light Quality & Colour Consistency details.
2. Refer to Appendix or MP Lighting website for complete look of luminaire with different trim finish options.

Warranty Notes & Disclaimer

Malfunction and damage to product due to incompatible dimming system or misuse will not be covered under warranty. Consult MP Lighting for recommended drivers. If the fixture has an option to be installed with a dimming control system, consult a dimming system manufacturer with minimum load before installing. MP Lighting reserves the right, at its sole discretion, at any time and without notice, to make design changes to any of our products. Consult MP Lighting website for most updated documentation.

L517

INTERIOR

Downlight | For open and bulkhead ceilings

- Dry location



Shown with with **NA** (no accessories)



Shown with with **SH** (metal shroud, silver)
* Refer to Appendix for other shroud options.

Performance

Wattage	Forward Current	Power Consumption Budget per fixture (including driver)	LED output (Source)	Fixture Output (Delivered)
4W	350mA	4.5W	440 lm	80-197 lm

Application

Environment	Dry Location approved. IP 40.
Mounting	C: Recessed mount with coil spring clip. Mounts directly to cabinet millwork or mounts to standard 4" octagonal back box (supplied by others) using MP Lighting cover plate (PLT-CS-01, ordered separately) in drywall applications. Cut-out size: Ø2-1/2" (Ø64mm)

Electrical

Electrical	Remote LED drivers (120-277V AC input, constant current output): Fixtures to be wired in series. Remote LED drivers (120-277V AC input, constant voltage output): Fixtures to be wired in parallel.
Control	On/off control Dimming: ELV or 0-10V dimming with appropriate drivers Other options (consult factory): TRIAC/MLV, DMX, DALI, Casambi, Power over Ethernet

Luminaire Construction

LED Light Source	W22S = CCT: 2200K, CRI (Ra): 80+, Colour Consistency: 3SDCM W27H = CCT: 2700K, CRI (Ra): 90+, Colour Consistency: 2SDCM W30H = CCT: 3000K, CRI (Ra): 90+, Colour Consistency: 2SDCM W35H = CCT: 3500K, CRI (Ra): 90+, Colour Consistency: 2SDCM W41H = CCT: 4100K, CRI (Ra): 90+, Colour Consistency: 3SDCM
Standard Compliance	✓ADA-compliant ✓WELL standard – Feature 58: Color Quality
Weight	N/A
Material	Fixture: machined marine-grade aluminum
Supplied with	Standard installation: Comes with friction fit spring clip or coil spring clip, and 2'(610mm) wire lead.
Warranty & LED Life	5 years limited warranty Estimated useful life of LED is 50,000 hours.

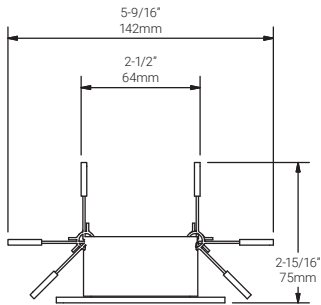
Ordered Separately

System Components	Power supplies: remote driver Please consult factory or visit Recommended Drivers for available driver options. Mounting Plate for Coil Spring Clip (PLT-CS-01): Refer to pg.4- Mounting Plate for Installation with standard 4" octagonal back box (supplied by others) in drywall applications.
-------------------	---

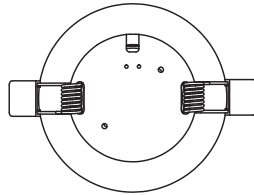
Mounting Options & Dimensions

LED Fixture Dimensions | with C, coil spring clip

Fixture



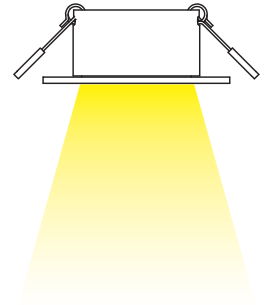
Top View



3D View



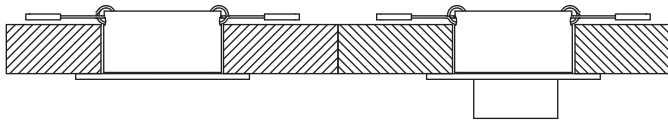
Beam



Shroud Options and Dimensions (shown with C, coil spring clip)

Cut-out size:
Ø2-1/2"
Ø64mm

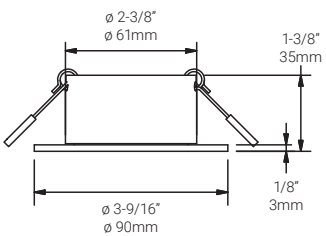
Cut-out size:
Ø2-1/2"
Ø64mm



12°/30°
FS (full shroud)

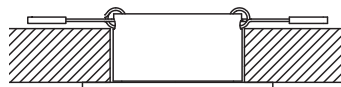
Recessed mount Installation | Shown with C, coil spring clip

Fixture

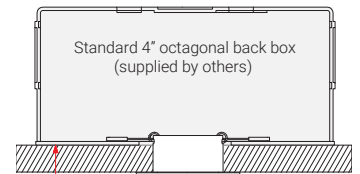
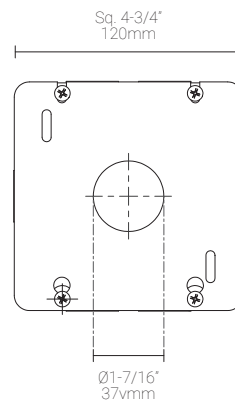


Push LED housing with coil spring clip into Ø1-1/2" (Ø38mm) hole until flush with surface.

Cut-out size:
Ø2-1/2"
Ø64mm



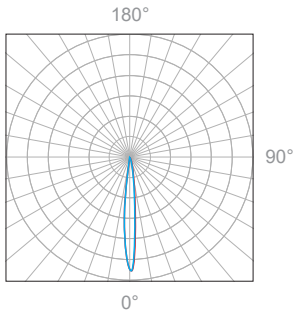
PLT-CS-01 (ordered separately): Mounting plate for C, coil spring clip. Compatible with standard 4" back box (supplied by others). Recommended for drywall applications.



PLT-CS-01

4W, 3000K, 90+ CRI, 30°

**Polar Candela Distribution
NA (No Accessories)**



Beam Width: 12°

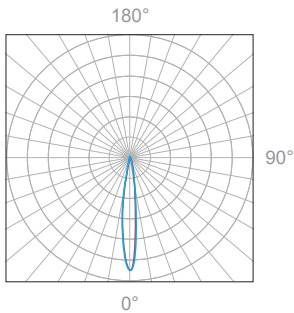


Illuminance at a Distance

Distance		Center Beam fc	Beam Width			
3.0ft	0.91m	506fc	0.6ft	0.18m	0.6ft	0.18m
6.0ft	1.83m	126fc	1.3ft	0.39m	1.3ft	0.39m
9.0ft	2.74m	56.2fc	1.9ft	0.58m	1.9ft	0.58m
12.0ft	3.66m	31.6fc	2.5ft	0.76m	2.6ft	0.79m
15.0ft	4.57m	20.2fc	3.1ft	0.94m	3.2ft	0.97m
18.0ft	5.49m	14fc	3.8ft	1.15m	3.9ft	1.18m

Delivered Lumen: 398.4 lm
■ Vertical Beam Spread: 11.9°
■ Horizontal Beam Spread: 12.3°

**Polar Candela Distribution
NA (No Accessories)**



Beam Width: 15°

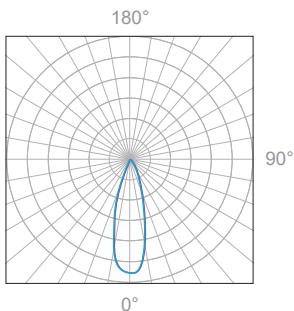


Illuminance at a Distance

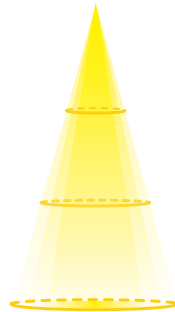
Distance		Center Beam fc	Beam Width			
3.0ft	0.91m	403fc	0.7ft	0.21m	0.6ft	0.21m
6.0ft	1.83m	101fc	1.5ft	0.45m	1.3ft	0.45m
9.0ft	2.74m	44.8fc	2.2ft	0.67m	2.2ft	0.67m
12.0ft	3.66m	25.2fc	3.0ft	0.91m	3.0ft	0.91m
15.0ft	4.57m	16.1fc	3.7ft	1.12m	3.7ft	1.12m
18.0ft	5.49m	11.2fc	4.5ft	1.37m	4.4ft	1.34m

Delivered Lumen: 393.7 lm
■ Vertical Beam Spread: 14.2°
■ Horizontal Beam Spread: 14.1°

**Polar Candela Distribution
NA (No Accessories)**



Beam Width: 26°

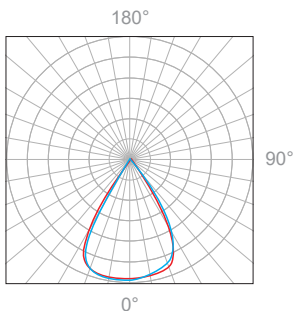


Illuminance at a Distance

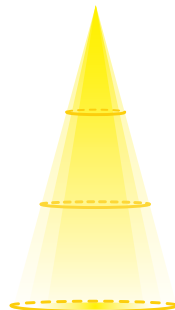
Distance		Center Beam fc	Beam Width			
3.0ft	0.91m	195fc	1.4ft	0.42m	1.3ft	0.39m
6.0ft	1.83m	48.9fc	2.7ft	0.82m	2.7ft	0.82m
9.0ft	2.74m	21.7fc	4.1ft	1.25m	4.0ft	1.22m
12.0ft	3.66m	12.2fc	5.4ft	1.64m	5.3ft	1.61m
15.0ft	4.57m	7.82fc	6.8ft	2.07m	6.6ft	2.01m
18.0ft	5.49m	5.43fc	8.2ft	2.50m	8.0ft	2.43m

Delivered Lumen: 397.8 lm
■ Vertical Beam Spread: 25.6°
■ Horizontal Beam Spread: 25.0°

**Polar Candela Distribution
NA (No Accessories)**



Beam Width: 45°



Illuminance at a Distance

Distance		Center Beam fc	Beam Width			
3.0ft	0.91m	34.8fc	3.8ft	1.15m	3.8ft	1.15m
6.0ft	1.83m	8.71fc	7.6ft	2.31m	7.6ft	2.31m
9.0ft	2.74m	3.87fc	11.4ft	3.47m	11.4ft	3.47m
12.0ft	3.66m	2.18fc	15.2ft	4.63m	15.2ft	4.63m
15.0ft	4.57m	1.39fc	19.0ft	5.79m	19.0ft	5.79m
18.0ft	5.49m	0.94fc	22.8ft	6.95m	22.8ft	6.95m

Delivered Lumen: 360.4 lm
■ Vertical Beam Spread: 64.7°
■ Horizontal Beam Spread: 64.6°

Appendix

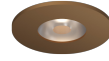
Aluminum Finishes



MA matte clear anodized
NA no accessories



BA black anodized
NA no accessories



BZ bronze
NA no accessories



WH white powder coat
NA no accessories



MA matte clear anodized
SH metal shroud, silver