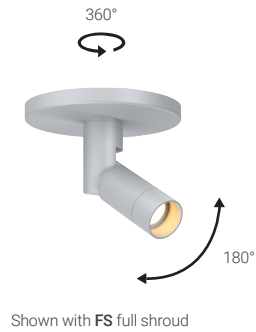


L730

EXTERIOR | INTERIOR

Spotlight | For surface mount on ground, ceilings & walls

- Wet, Damp, and Dry location



Ordering Information

Clear Form

Date : _____ Quantity : _____

Project : _____ Note : _____

Type : _____

Specifications

Luminaire | Example Code: L730-2-W30H-S-ELB-WS-S6

Product	Version	CCT & CRI ¹	Beam Angle	Accessories (optional)	Shroud	Finish ²
L730						
	1 1W 2 2W	W22S 2200K 80+ W27H 2700K 90+ W30H 3000K 90+ W35H 3500K 90+ W41H 4100K 90+	S spot 12° N narrow flood 30°	ELB eggcrate louver	FS full shroud WS wet location shroud	Aluminum Finishes: MA matte clear anodized BA black anodized BZ bronze powder coated Stainless Steel Finish: S6 stainless steel 316

System Components (Ordered Separately)

Remote Driver : _____ Control System : _____

On/Off | Dimming ELV or 0-10 dimming
Other options (consult factory) TRIAC/MLV, DMX, DALI, Casambi, PoE

Important Notes

Specification

- Refer to pg.2 - Electrical for Colour Consistency details.
- Refer to Appendix or MP Lighting website for complete look of luminaire with different finish options.

Warranty Notes & Disclaimer

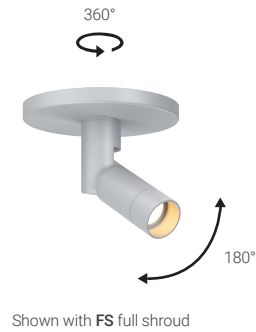
Malfunction and damage to product due to incompatible dimming system or misuse will not be covered under warranty. Consult MP Lighting for recommended drivers. If the fixture has an option to be installed with a dimming control system, consult a dimming system manufacturer with minimum load before installing. MP Lighting reserves the right, at its sole discretion, at any time and without notice, to make design changes to any of our products. Consult MP Lighting website for most updated documentation.

L730

EXTERIOR | INTERIOR

Spotlight | For surface mount on ground, ceilings & walls

- Wet, Damp, and Dry location



Performance

Wattage	Forward Current	Power Consumption Budget per fixture (including driver)	LED output (Source)	Fixture Output (Delivered)
1W	350mA	1.3W	110 lm	65-75 lm
2W	700mA	2.6W	220 lm	129-149 lm

Application

Environment	Wet / Damp / Dry Location approved. IP 66. Wet location shroud (WS) can be specified where proper drainage for water in shroud is required.
Mounting	B4: mounts to standard 4" octagonal back box (supplied by others) or MP Lighting back box (EBX-OCT1, ordered separately)

Electrical

Power Supplies	Remote LED drivers (120-277V AC input, constant current output): Fixtures to be wired in series. Integral driver available with B3 canopy --- Consult factory.
Control	On/off control Dimming: ELV or 0-10V dimming with appropriate drivers Other options (consult factory): TRIAC/MLV, DMX, DALI, Casambi, Power over Ethernet

Luminaire Construction

LED Light Source	W22S = CCT: 2200K, CRI (Ra): 80+, Colour Consistency: 3SDCM W27H = CCT: 2700K, CRI (Ra): 90+, Colour Consistency: 2SDCM W30H = CCT: 3000K, CRI (Ra): 90+, Colour Consistency: 2SDCM W35H = CCT: 3500K, CRI (Ra): 90+, Colour Consistency: 3SDCM (Contact factory for 2SDCM option) W41H = CCT: 4100K, CRI (Ra): 90+, Colour Consistency: 3SDCM
Standard Compliance	✓ADA-compliant ✓WELL standard – Feature 58: Color Quality
Weight	N/A
Material	Fixture: machined marine-grade aluminum or stainless steel 316
Supplied with	N/A
Warranty & LED Life	5 years limited warranty Estimated useful life of LED is 50,000 hours.

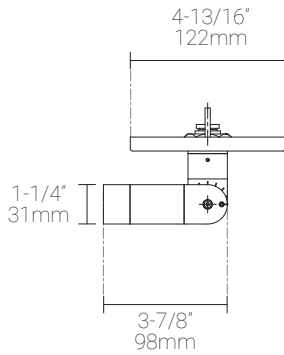
Ordered Separately

System Components	Power supplies: remote driver Please consult factory or visit Recommended Drivers for available driver options.
-------------------	---

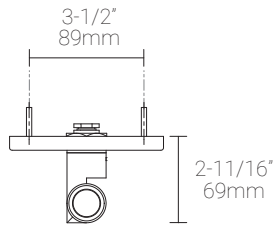
Mounting Options & Dimensions

LED Fixture Dimensions

Fixture



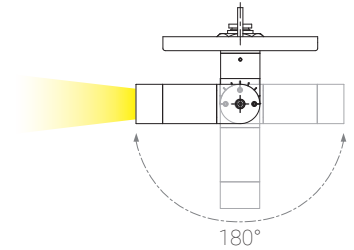
Front View



3D View

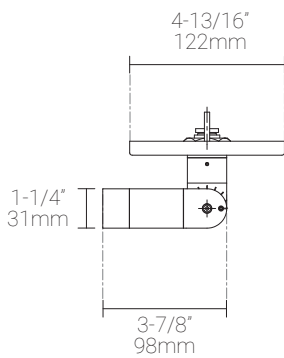


Beam

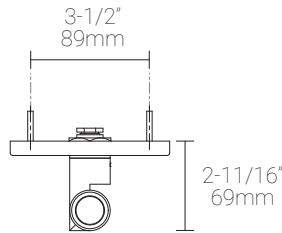


Ceiling Installation shown with MP Lighting back box (EBX-OCT1)

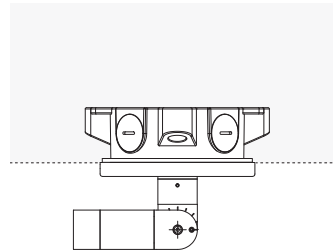
Fixture with B4 canopy



Front view with B4 canopy

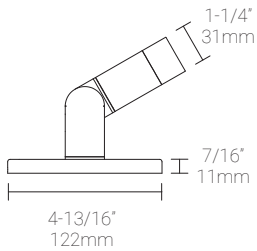


Ceiling (surface) Installation with B4 canopy & Back Box

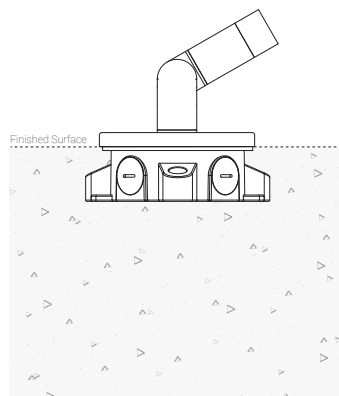


Ground Installation shown with MP Lighting back box (EBX-OCT1)

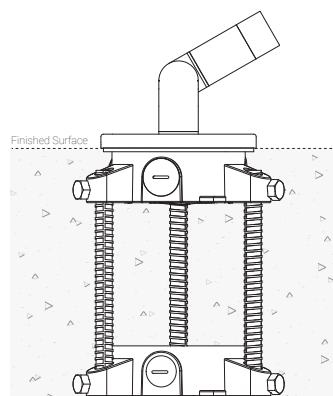
Ground Installation with B4 canopy & Back Box



Ground Installation with B4 canopy & Back box

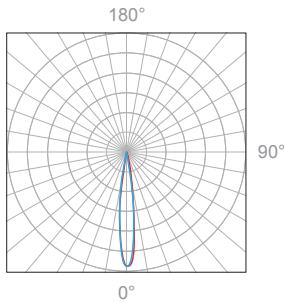


Ground Installation with B4 canopy, Back box & MK3



1W, 3000K, 90+ CRI,

Polar Candela Distribution



Beam Width: 12°

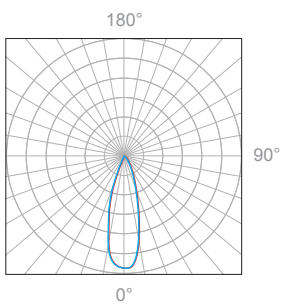


Illuminance at a Distance

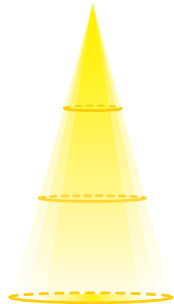
Distance		Center Beam fc	Beam Width			
3.0ft	0.91m	50.3fc	1.0ft	0.30m	1.0ft	0.30m
6.0ft	1.83m	12.6fc	2.1ft	0.64m	2.1ft	0.64m
9.0ft	2.74m	5.59fc	3.1ft	0.94m	3.1ft	0.94m
12.0ft	3.66m	3.14fc	4.1ft	1.25m	4.1ft	1.25m
15.0ft	4.57m	2.01fc	5.1ft	1.55m	5.1ft	1.55m
18.0ft	5.49m	1.40fc	6.2ft	1.89m	6.2ft	1.89m

Delivered Lumen: 65 lm
 ■ Vertical Beam Spread: 19.4°
 ■ Horizontal Beam Spread: 19.4°

Polar Candela Distribution



Beam Width: 30°



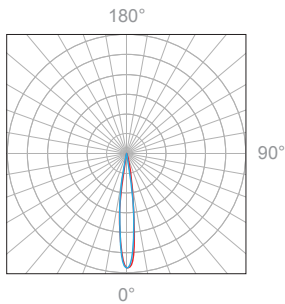
Illuminance at a Distance

Distance		Center Beam fc	Beam Width			
3.0ft	0.91m	35.1fc	1.5ft	0.46m	1.5ft	0.46m
6.0ft	1.83m	8.78fc	3.1ft	0.95m	3.1ft	0.95m
9.0ft	2.74m	3.90fc	4.6ft	1.40m	4.6ft	1.40m
12.0ft	3.66m	2.19fc	6.1ft	1.86m	6.1ft	1.86m
15.0ft	4.57m	1.40fc	7.6ft	2.31m	7.7ft	2.34m
18.0ft	5.49m	0.98fc	9.2ft	2.80m	9.2ft	2.80m

Delivered Lumen: 75 lm
 ■ Vertical Beam Spread: 28.5°
 ■ Horizontal Beam Spread: 28.7°

2W, 3000K, 90+ CRI

Polar Candela Distribution



Beam Width: 12°

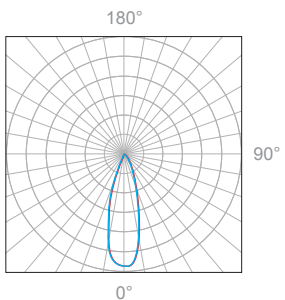


Illuminance at a Distance

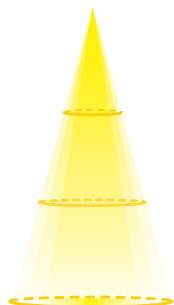
Distance		Center Beam fc	Beam Width			
3.0ft	0.91m	103fc	1.0ft	0.30m	1.0ft	0.30m
6.0ft	1.83m	25.9fc	2.0ft	0.61m	2.0ft	0.61m
9.0ft	2.74m	11.5fc	3.0ft	0.91m	3.0ft	0.91m
12.0ft	3.66m	6.47fc	4.0ft	1.22m	4.0ft	1.22m
15.0ft	4.57m	4.14fc	5.0ft	1.52m	5.0ft	1.52m
18.0ft	5.49m	2.87fc	6.0ft	1.83m	6.0ft	1.83m

Delivered Lumen: 129 lm
 ■ Vertical Beam Spread: 19.0°
 ■ Horizontal Beam Spread: 19.0°

Polar Candela Distribution



Beam Width: 30°



Illuminance at a Distance

Distance		Center Beam fc	Beam Width			
3.0ft	0.91m	69.5fc	1.5ft	0.46m	1.5ft	0.46m
6.0ft	1.83m	17.4fc	3.0ft	0.91m	3.0ft	0.91m
9.0ft	2.74m	7.73fc	4.5ft	1.37m	4.5ft	1.37m
12.0ft	3.66m	4.35fc	6.0ft	1.82m	6.0ft	1.82m
15.0ft	4.57m	2.78fc	7.6ft	2.31m	7.6ft	2.31m
18.0ft	5.49m	1.93fc	9.1ft	2.77m	9.1ft	2.77m

Delivered Lumen: 149 lm
 ■ Vertical Beam Spread: 28.3°
 ■ Horizontal Beam Spread: 28.3°

Appendix

Mounting & Finish Options



MA matte clear anodized



BA black anodized



BZ bronze powder coated



S6 stainless steel 316

Shroud Options

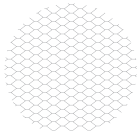


FS full shroud



WS wet location shroud

Accessories



ELB eggcrate louver, black